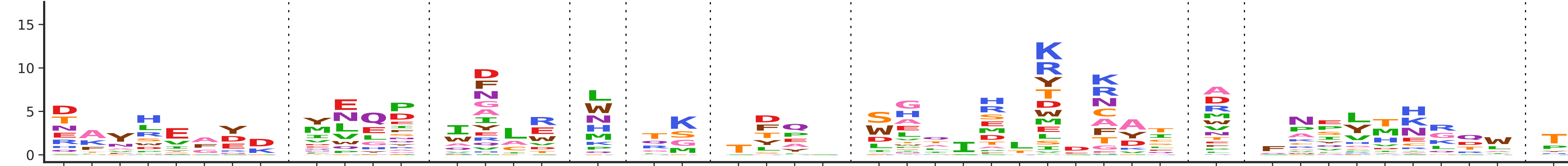
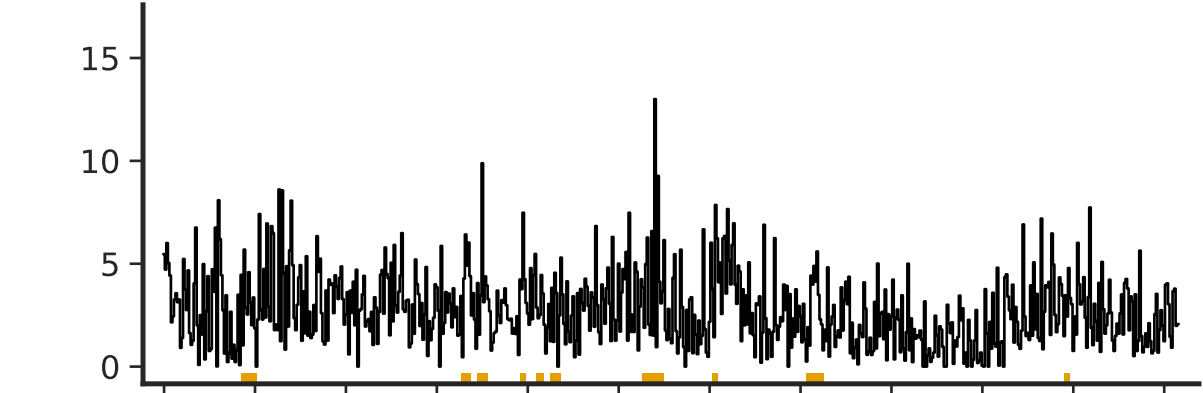
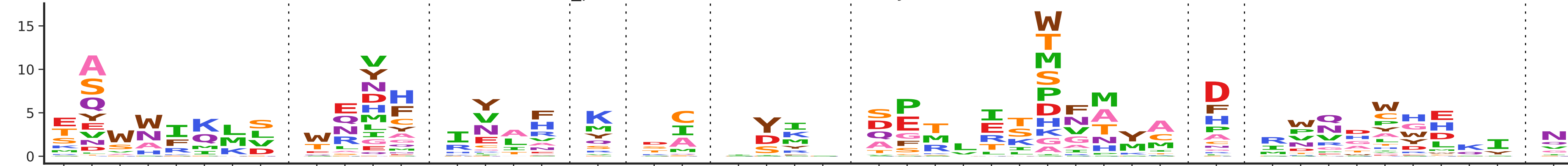
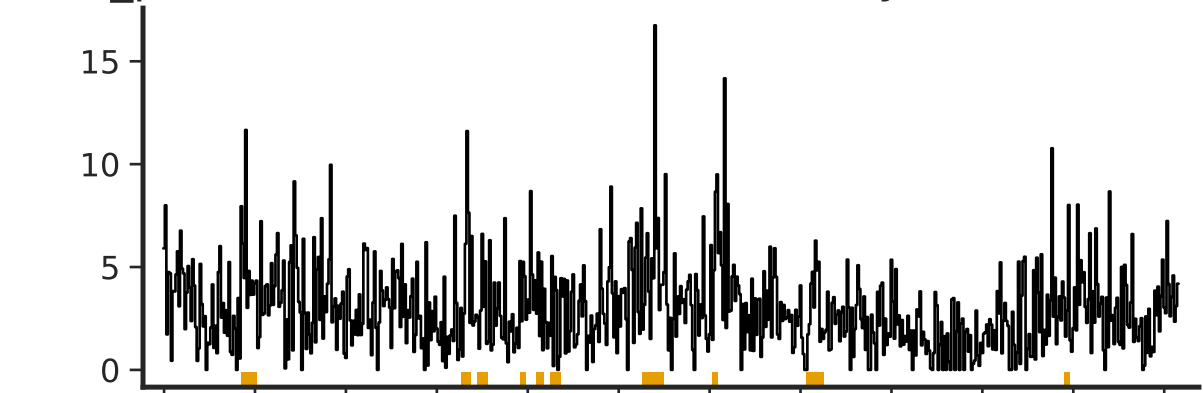


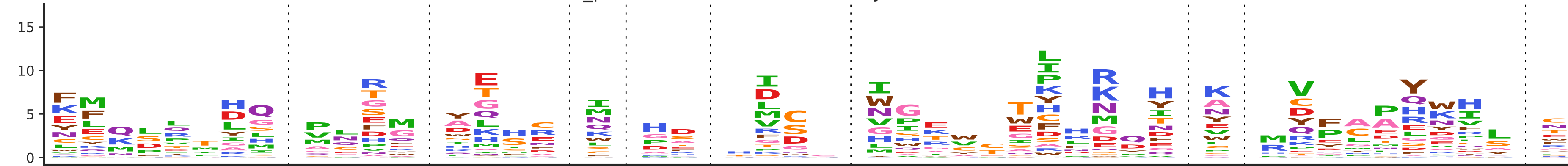
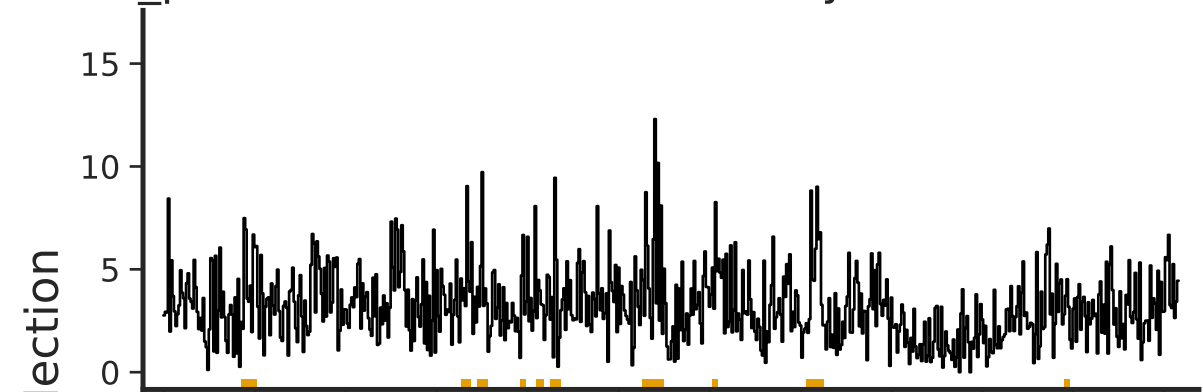
2423_post-vacc, 1v2a, 0.31% infectivity, 1:4 serum dilution



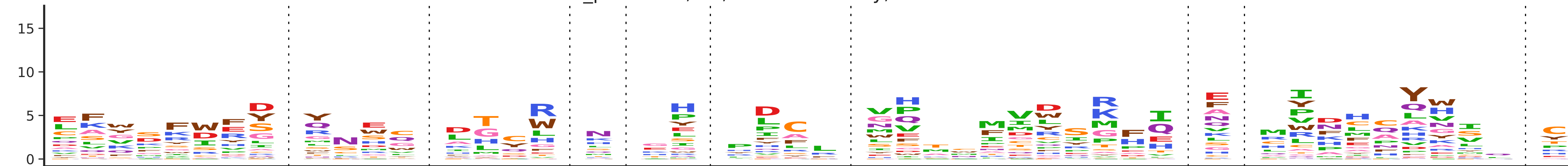
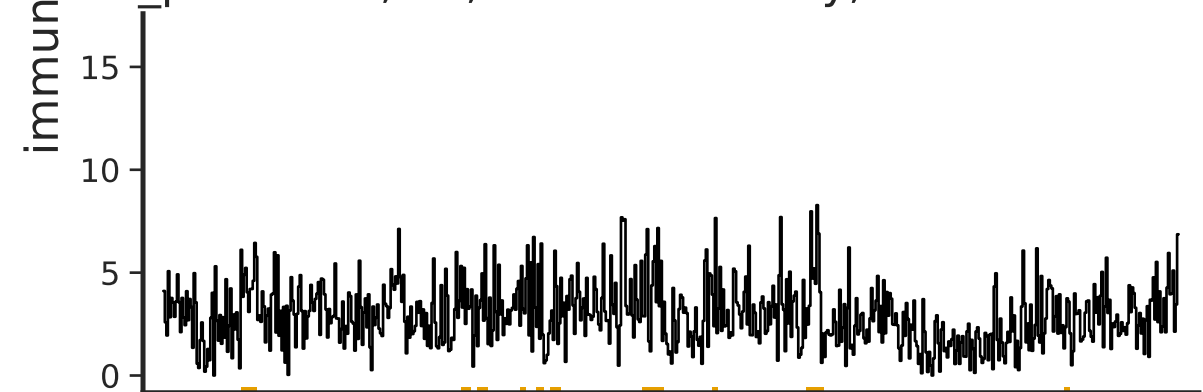
2423_post-vacc, 1v2a, 0.32% infectivity, 1:2 serum dilution



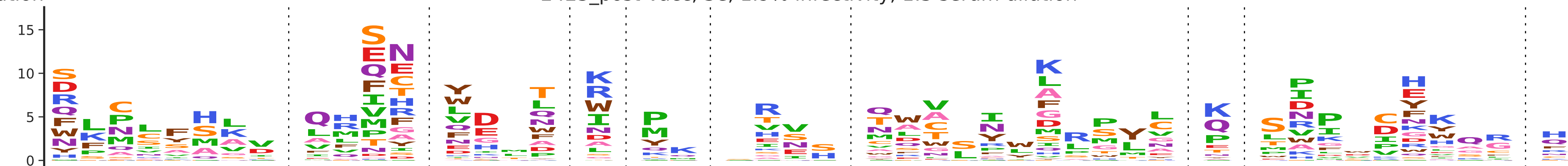
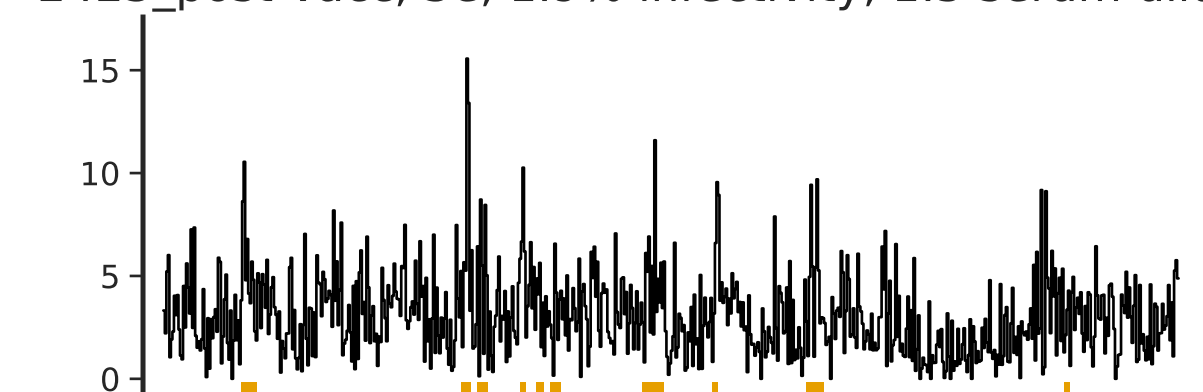
2423_post-vacc, 2e, 2.9% infectivity, 1:10 serum dilution



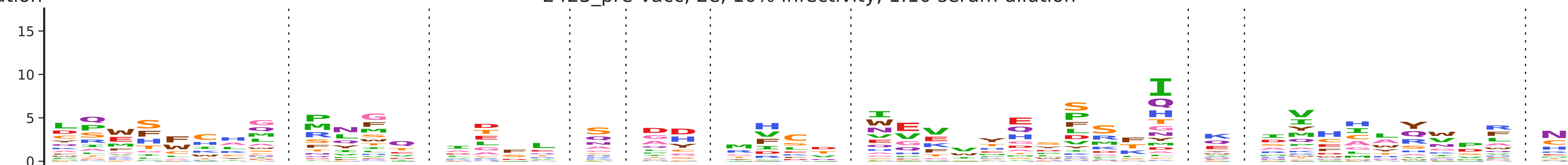
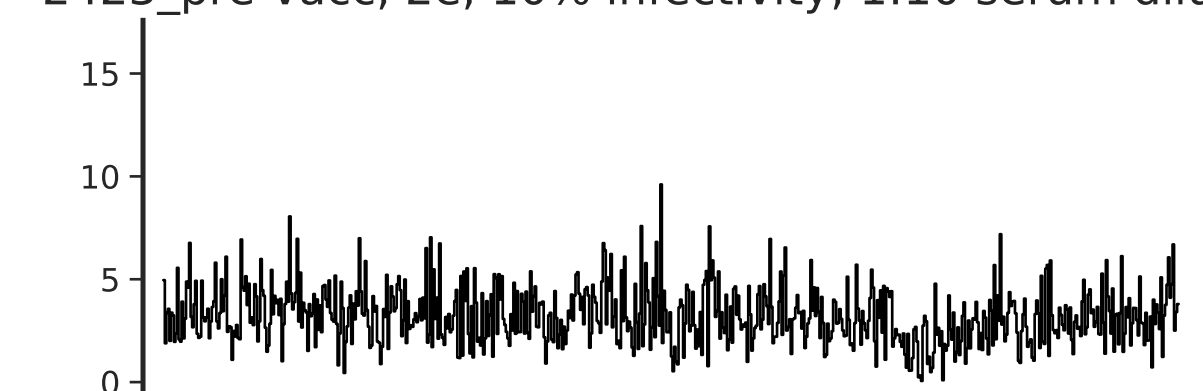
2423_post-vacc, 2e, 8.0% infectivity, 1:30 serum dilution



2423_post-vacc, 3e, 1.9% infectivity, 1:5 serum dilution



2423_pre-vacc, 2e, 10% infectivity, 1:10 serum dilution



immunoselection

site