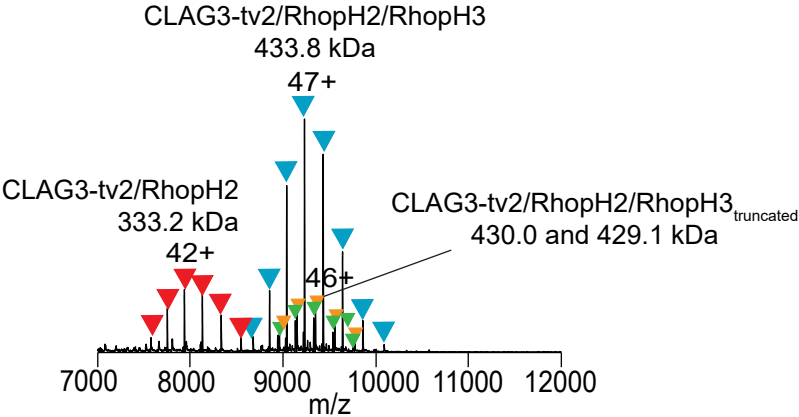


A



B

Native MS analysis of RhopH complexes

Measured Mass ±SD (Da)*	Assignment	Expected Mass (Da)**	Δ Mass (Da)***	% Mass Error
433,790 ± 10	C3-tv2/R2/R3	436,494	-2,704	(0.62)
430,005 ± 3	C3-tv2/R2/R3 _{truncated1}			
429,135 ± 10	C3-tv2/R2/R3 _{truncated2}			
333,232 ± 3	C3-tv2/R2	334,448	-1,216	(0.36)

C

C3-tv2	R2	R3	Expected Mass (Da)
0	0	2	204,092
0	1	1	262,499
1	0	1	276,041
0	0	3	306,138
0	2	0	320,906
1	1	0	334,448
2	0	0	347,989
0	1	2	364,545
1	0	2	378,087
0	2	1	422,952
1	1	1	436,494
2	0	1	450,035