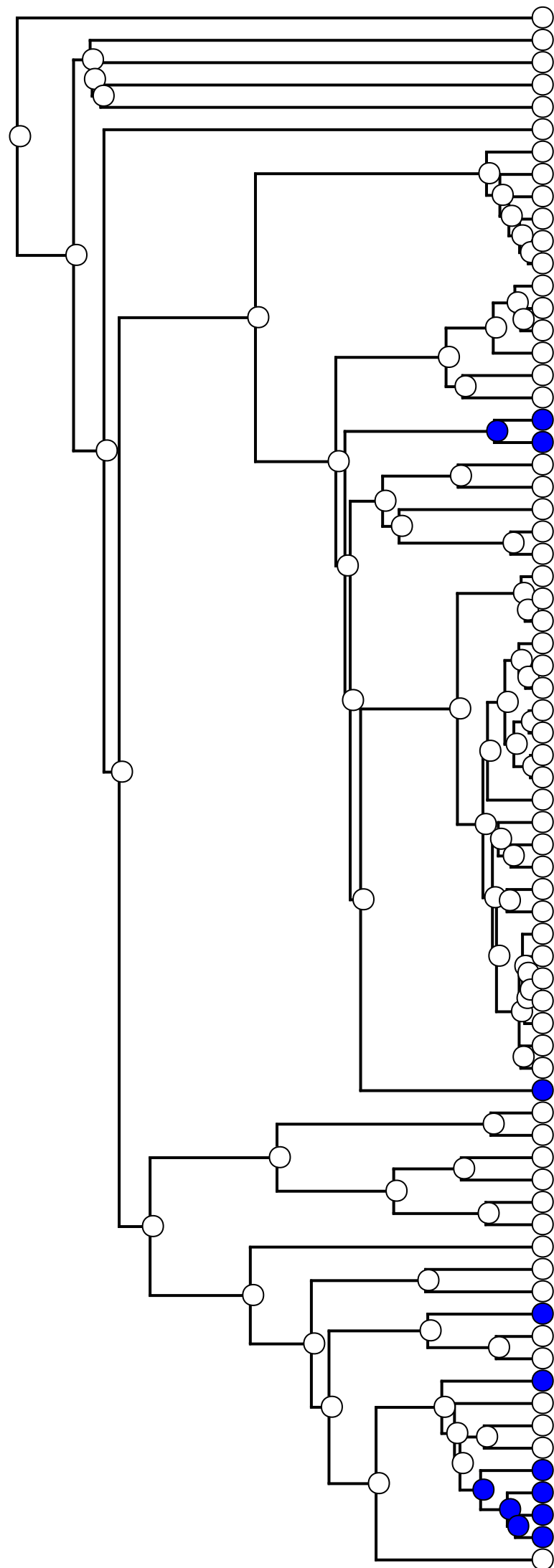
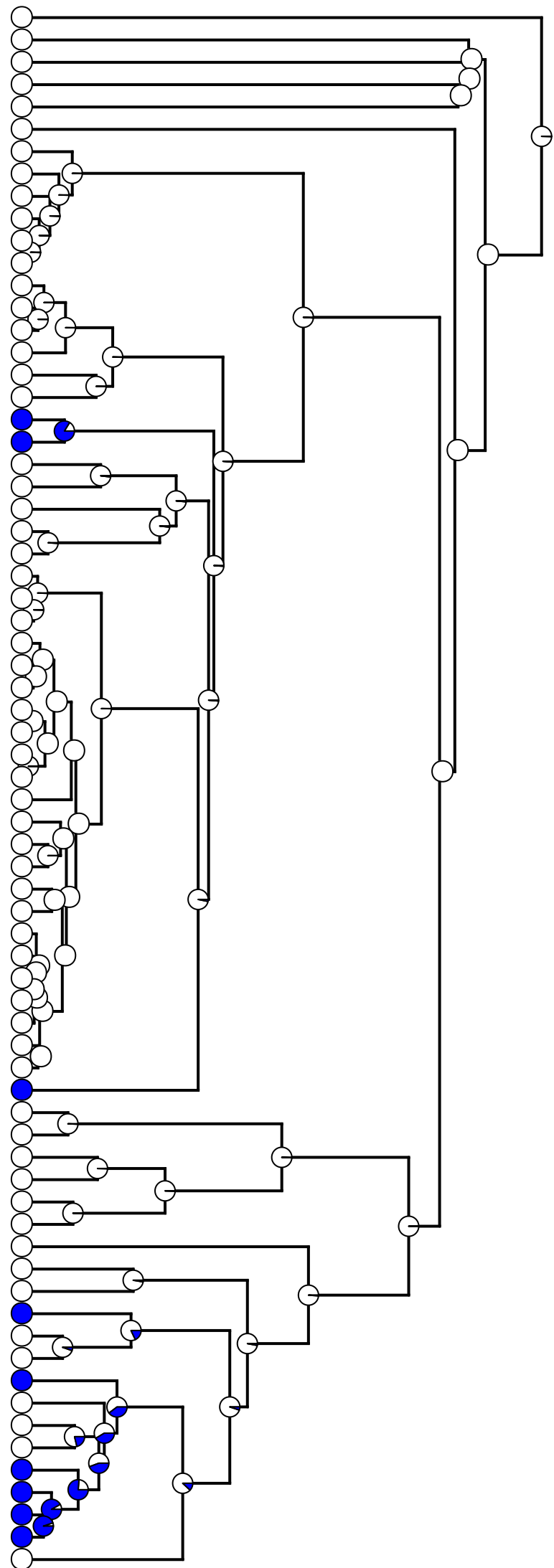


A) Maximum parsimony

threshold



- Cavia porcellus*
- Pteropus alecto*
- Felis catus*
- Sus scrofa*
- Equus caballus*
- Solenodon paradoxus*
- Uropsilus investigator*
- Uropsilus nivatus*
- Uropsilus sp.1*
- Uropsilus soricipes*
- Uropsilus gracilis*
- Uropsilus atronates*
- Scapanus townsendii*
- Scapanus orarius*
- Scapanus latimanus*
- Scalopus aquaticus*
- Scapanulus oweni*
- Parascalops breweri*
- Galemys pyrenaicus*
- Desmana moschata*
- Scaptonyx sp.*
- Scaptonyx fuscicaudus*
- Neurotrichus gibbsii*
- Urotrichus talpoides*
- Dymecodon pilirostris*
- Talpa romana*
- Talpa europaea*
- Talpa caeca*
- Mogera latouchi*
- Mogera kanoana*
- Mogera insularis*
- Mogera robusta*
- Mogera wogura*
- Mogera tokudae*
- Mogera etigo*
- Oreoscaptor mizura*
- Scaptochirus moschatus*
- Parascaptor leucura*
- Parascaptor sp.1*
- Euroscaptor subanura*
- Euroscaptor parvidens*
- Euroscaptor orlovi*
- Euroscaptor sp. 2*
- Euroscaptor sp. 1*
- Euroscaptor malayana*
- Euroscaptor klossi*
- Euroscaptor longirostris*
- Euroscaptor grandis*
- Condylura cristata*
- Mesechinus dauuricus*
- Erinaceus europaeus*
- Neotetracus sinensis*
- Hylomys suillus*
- Podogymnures truei*
- Echinosorex gymnura*
- Crociodura indochinensis*
- Blarinella quadraticauda*
- Blarina brevicauda*
- Sorex palustris*
- Sorex bedfordiae*
- Sorex araneus*
- Neomys fodiens*
- Episoriculus fumidus*
- Episoriculus umbrinus*
- Episoriculus macrurus*
- Nectogale elegans*
- Chimarrogale platycephala*
- Chimarrogale styani*
- Chimarrogale himalayica*
- Anourosorex squamipes*



B) Maximum parsimony

threshold

