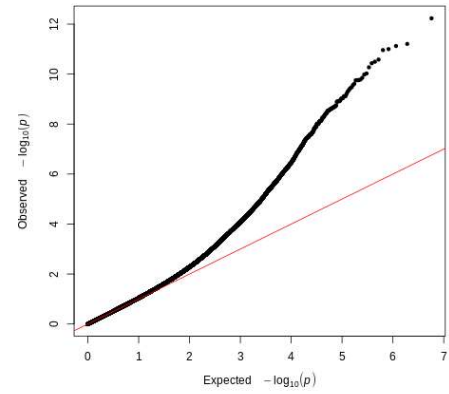
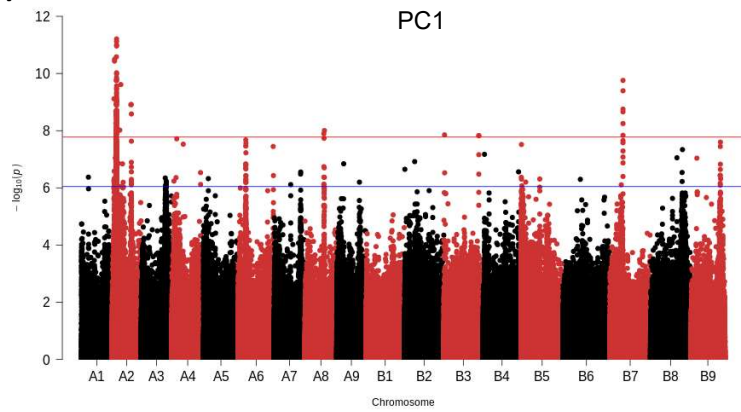
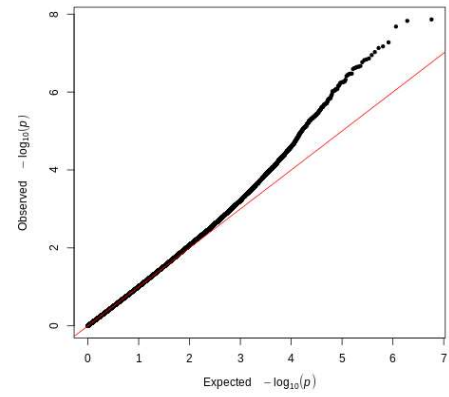
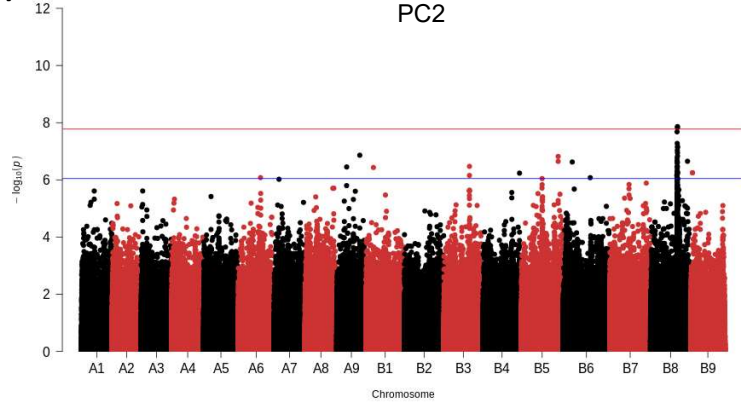


(a)



(b)



(c)

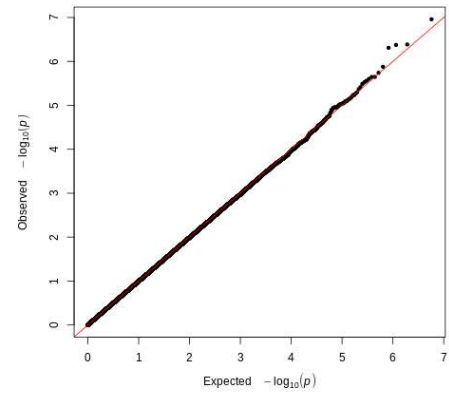
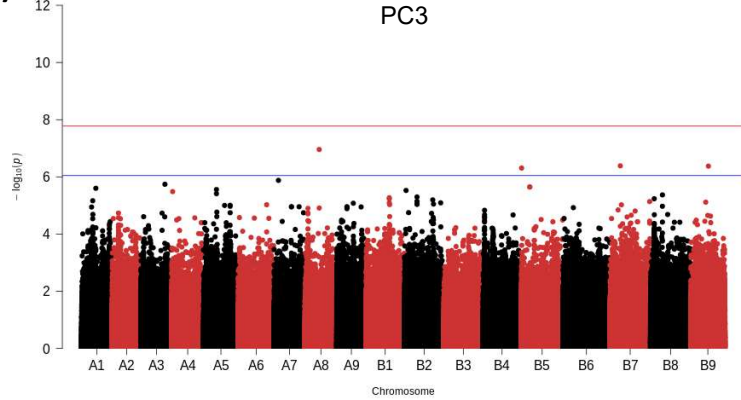


Figure 3-figure supplement 8 : GWAS analysis of principal components, PC1 (a), PC2 (b), PC3 (c): Manhattan plots (left), and quantile-quantile plots (right): The blue horizontal line in the Manhattan plots indicates the suggestive threshold $-\log_{10}(8.98\text{E-}7)$. The red horizontal line indicates the significance threshold (Bonferroni correction) $-\log_{10}(1.67\text{e-}8)$.