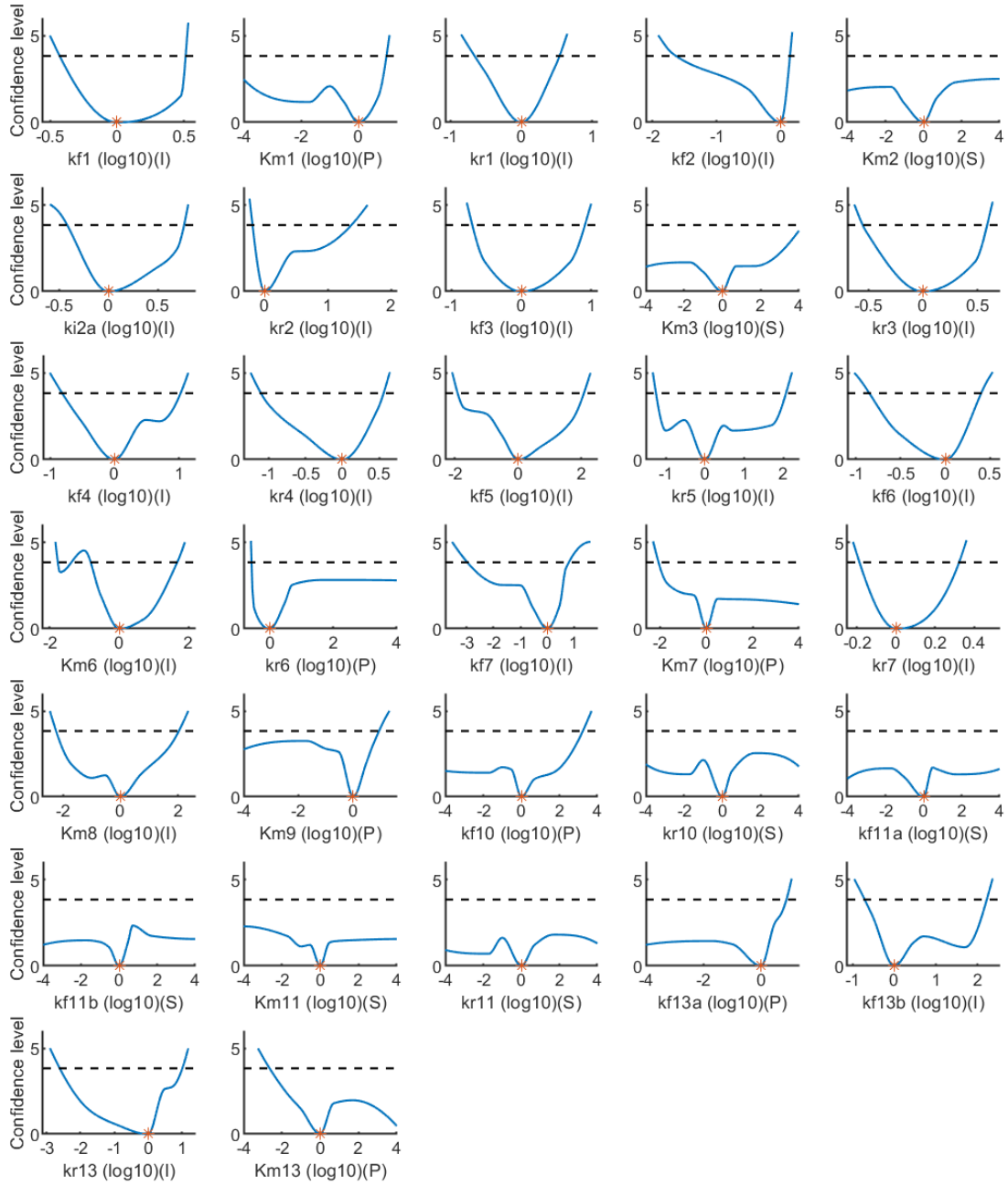
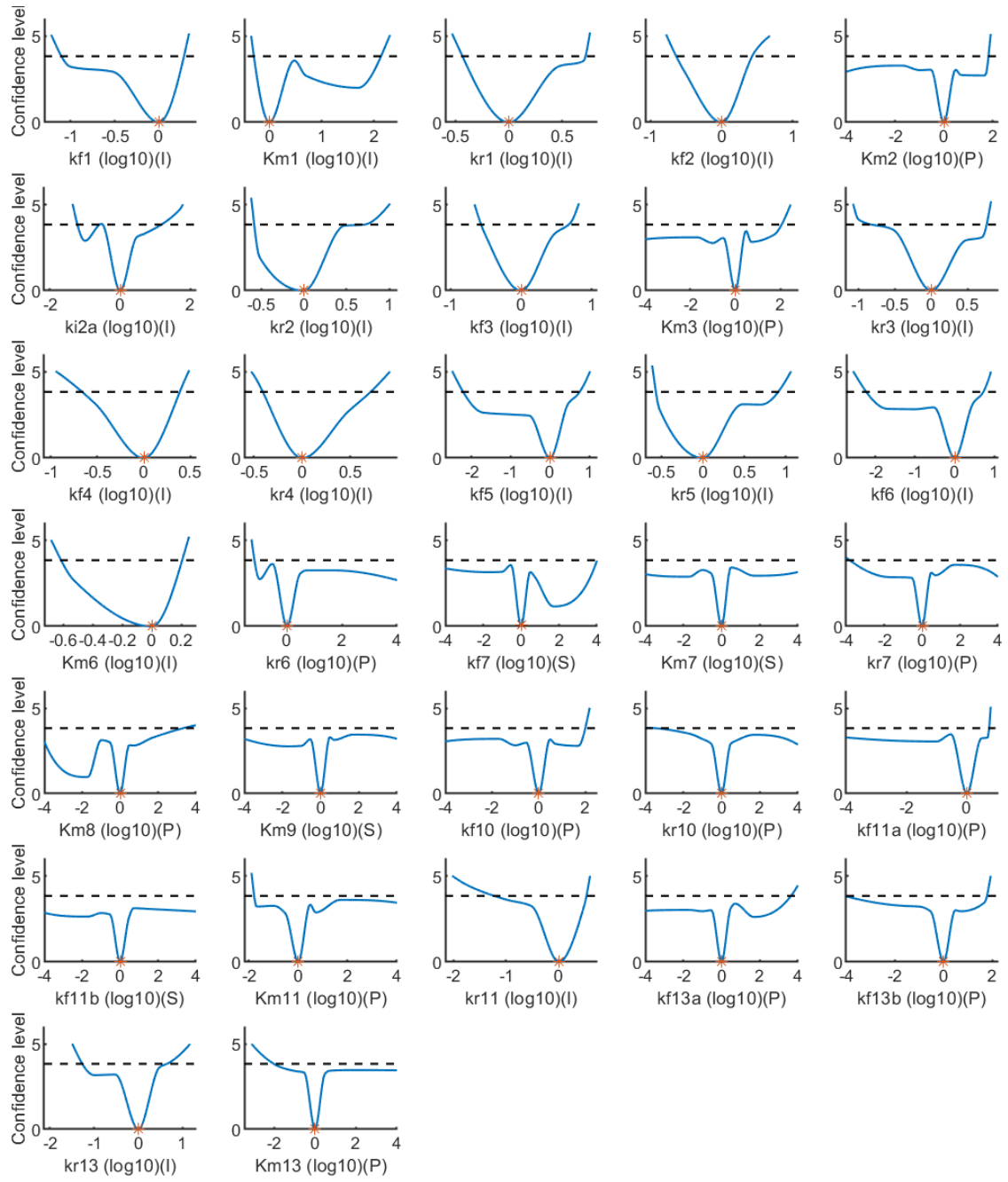


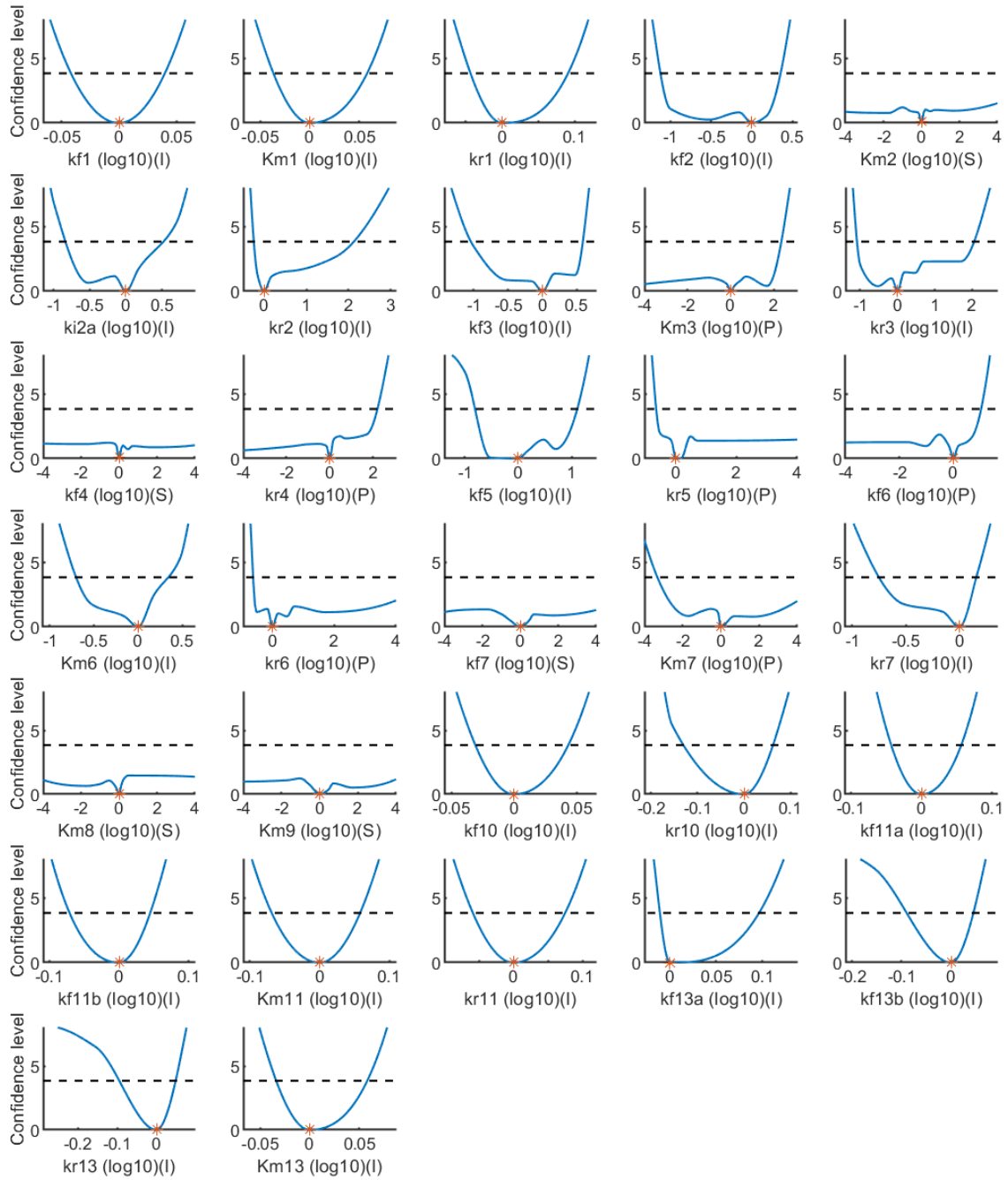
## Parameter identifiability analysis of Models 4 to 9



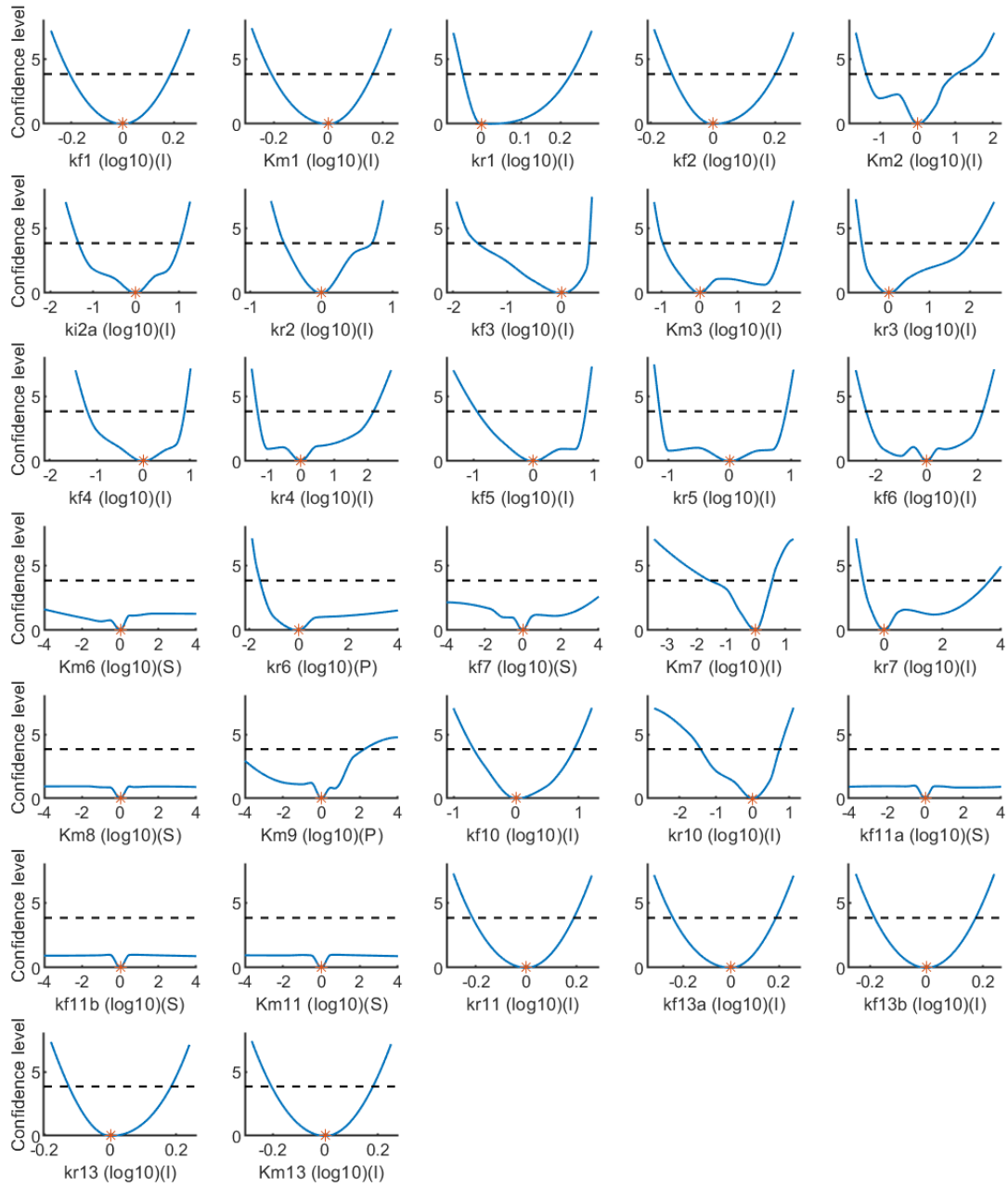
**Figure 1. Parameter identifiability analysis of Model 4 (PDK1 to IRS/PI3K).** The blue lines display profile likelihood versus model parameters, as computed in (1). For each parameter, the calibrated value is the lowest point within its corresponding blue curve (red star). X axis shows the relative value of the parameter compared to its calibrated value. The black dashed line indicates the threshold for 95% point-wise confidence interval. Parameter values are given in logarithm format. The type of identifiability of each parameter is given in the parenthesis (X-axis label) based on (1): I: Identifiable, P: practically non-identifiable, S: structurally non-identifiable. For more details please see Materials and Methods.



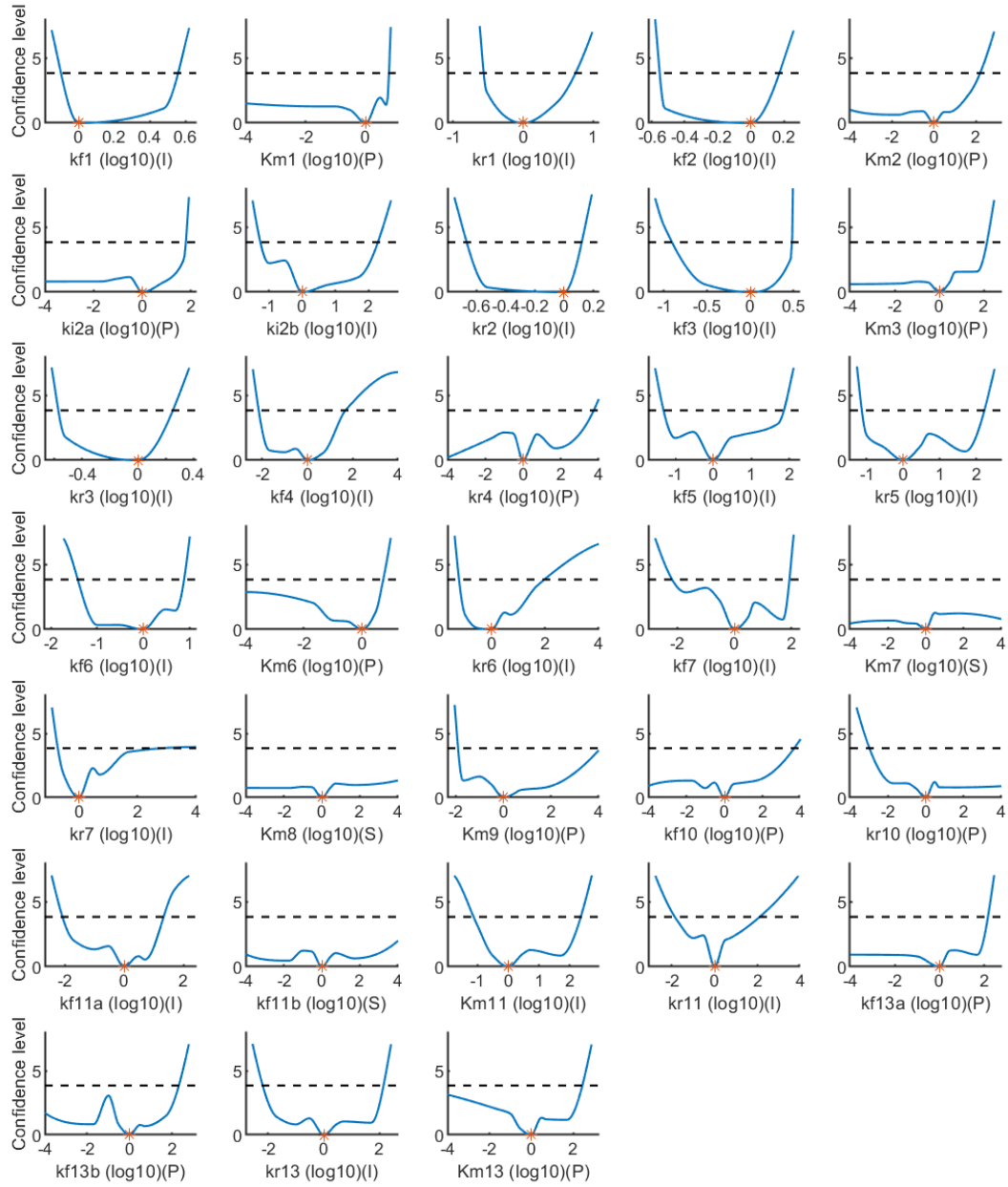
**Figure 2. Parameter identifiability analysis of Model 5 (PDK1 to PTEN).** The blue lines display profile likelihood versus model parameters, as computed in (1). For each parameter, the calibrated value is the lowest point within its corresponding blue curve (red star). X axis shows the relative value of the parameter compared to its calibrated value. The black dashed line indicates the threshold for 95% point-wise confidence interval. Parameter values are given in logarithm format. The type of identifiability of each parameter is given in the parenthesis (X-axis label) based on (1): I: Identifiable, P: practically non-identifiable, S: structurally non-identifiable. For more details please see Materials and Methods.



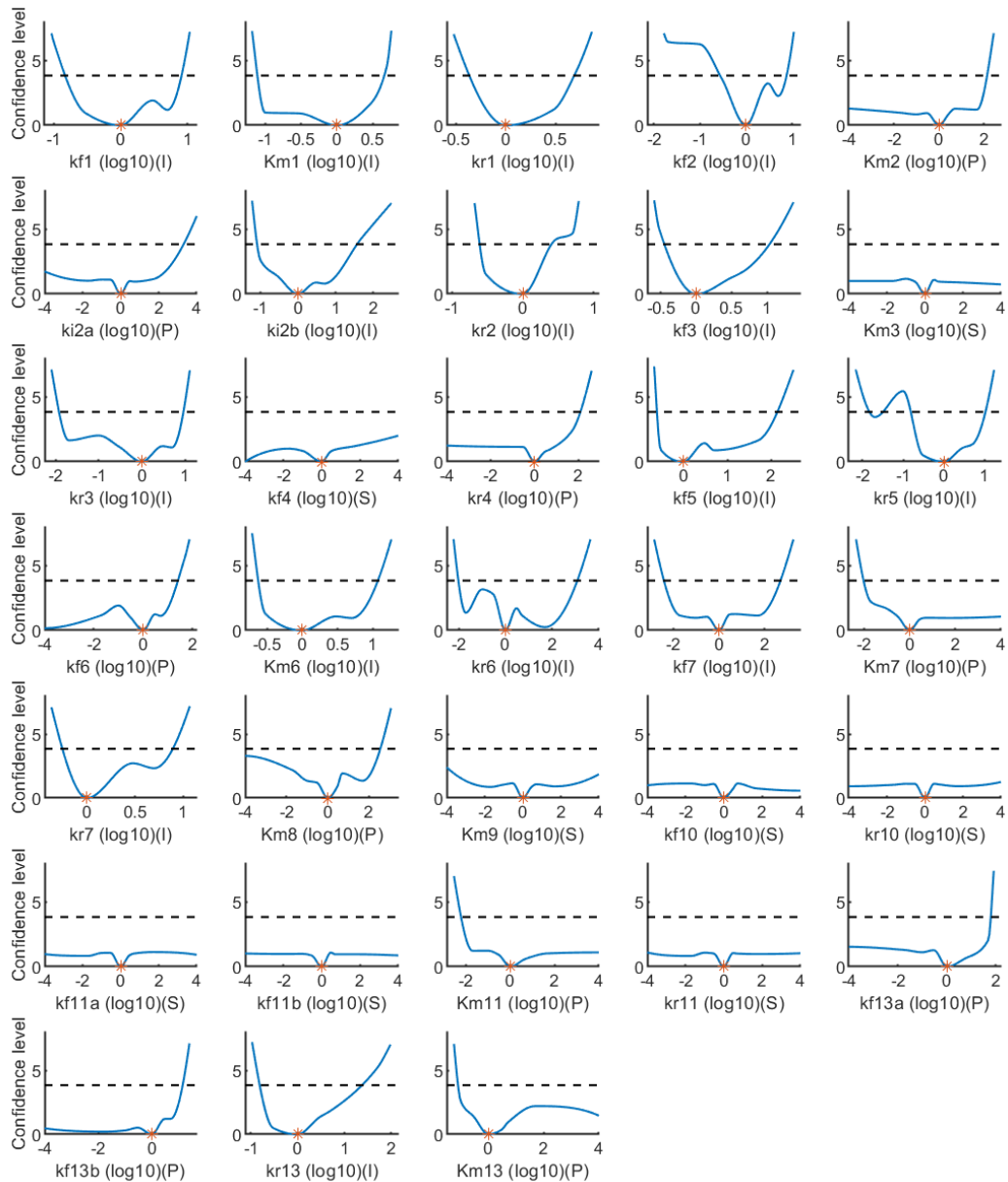
**Figure 3. Parameter identifiability analysis of Model 6 (mTORC2 to IRS/PI3K).** The blue lines display profile likelihood versus model parameters, as computed in (1). For each parameter, the calibrated value is the lowest point within its corresponding blue curve (red star). X axis shows the relative value of the parameter compared to its calibrated value. The black dashed line indicates the threshold for 95% point-wise confidence interval. Parameter values are given in logarithm format. The type of identifiability of each parameter is given in the parenthesis (X-axis label) based on (1): I: Identifiable, P: practically non-identifiable, S: structurally non-identifiable. For more details please see Materials and Methods.



**Figure 4. Parameter identifiability analysis of Model 7 (mTORC2 to PTEN).** The blue lines display profile likelihood versus model parameters, as computed in (1). For each parameter, the calibrated value is the lowest point within its corresponding blue curve (red star). X axis shows the relative value of the parameter compared to its calibrated value. The black dashed line indicates the threshold for 95% point-wise confidence interval. Parameter values are given in logarithm format. The type of identifiability of each parameter is given in the parenthesis (X-axis label) based on (1): I: Identifiable, P: practically non-identifiable, S: structurally non-identifiable. For more details please see Materials and Methods.



**Figure 5. Parameter identifiability analysis of Model 8 (Akt to PTEN).** The blue lines display profile likelihood versus model parameters, as computed in (1). For each parameter, the calibrated value is the lowest point within its corresponding blue curve (red star). X axis shows the relative value of the parameter compared to its calibrated value. The black dashed line indicates the threshold for 95% point-wise confidence interval. Parameter values are given in logarithm format. The type of identifiability of each parameter is given in the parenthesis (X-axis label) based on (1): I: Identifiable, P: practically non-identifiable, S: structurally non-identifiable. For more details please see Materials and Methods.



**Figure 6. Parameter identifiability analysis of Model 9 (Akt to IRS/PI3K).** The blue lines display profile likelihood versus model parameters, as computed in (1). For each parameter, the calibrated value is the lowest point within its corresponding blue curve (red star). X axis shows the relative value of the parameter compared to its calibrated value. The black dashed line indicates the threshold for 95% point-wise confidence interval. Parameter values are given in logarithm format. The type of identifiability of each parameter is given in the parenthesis (X-axis label) based on (1): I: Identifiable, P: practically non-identifiable, S: structurally non-identifiable. For more details please see Materials and Methods.

#### Reference:

(1) Raue A, Kreutz C, Maiwald T, Bachmann J, Schilling M, Klingmüller U, et al. Structural and practical identifiability analysis of partially observed dynamical models by exploiting the profile likelihood. *Bioinformatics*. 2009;25(15):1923-9.