

15. 1. 2021.

• purification

NetL4 (38+180)  
et NetL3 (Surfactant)

• (NetL4):

+ 50 p  
15 bleu  
5 DTT

+ fractions E1-E2-E3

E3: BC 100)

• NetL3 :

65 p  
25 bleu  
10 DTT

E1 E2 E3 650 peptide  
(bleu)

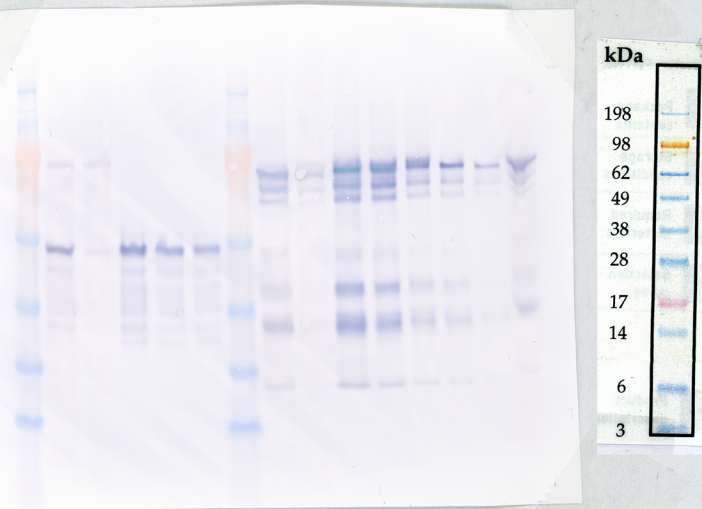
E4 BC 500

E5 glycine.

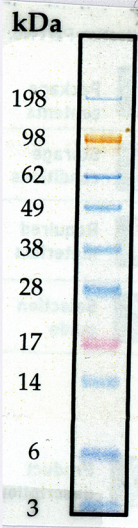
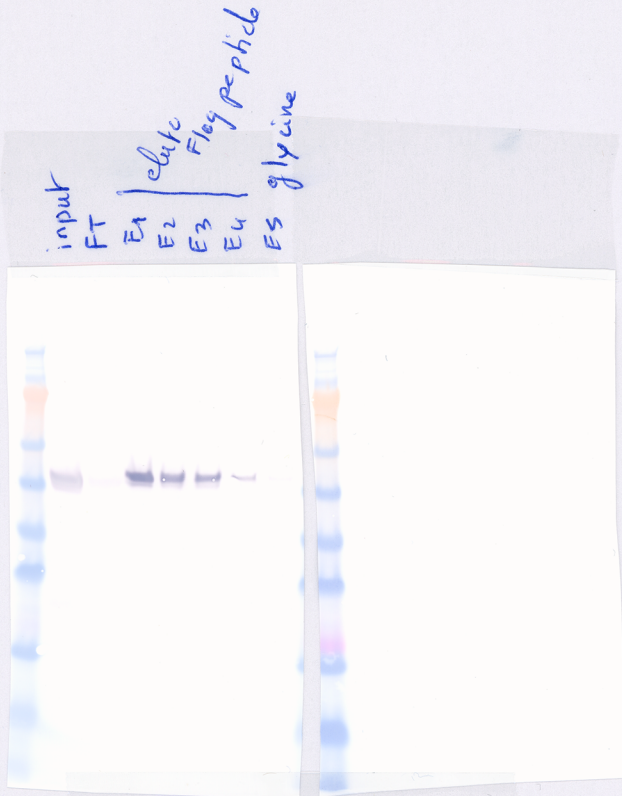
• TRES.

• Transfert 1h:30

•  $\alpha$ -HA Touse.



Rabbit  
 $\alpha$ ITA  
(cell signaling)



50 T180  
RHKU80 WTAP-HAFlag  
↓ Lysis Buffer Taxo  
 $\alpha$ IP FLAG  
↓  
Elute. peptide