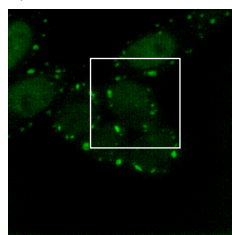


532 nm – full cell acquisition

a)

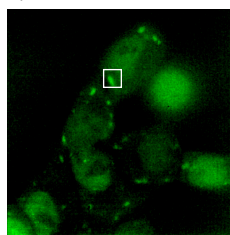


Fluorescence  
intensity of GFP  
(green)

$t = 0$  s  
exposure 900 ms

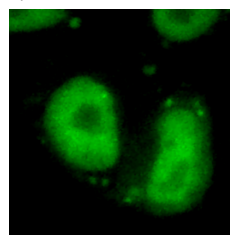
532 nm – partial acquisition

b)

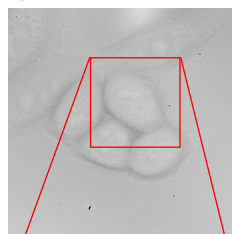


780 nm – full cell acquisition

c)



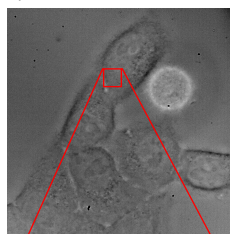
d)



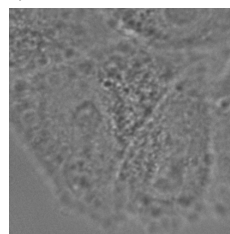
Brightfield intensity

$t = 1$  s  
exposure 4 ms

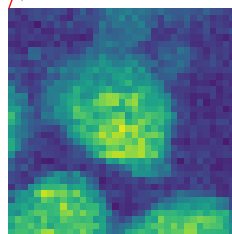
e)



f)



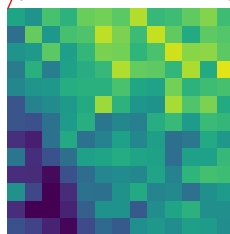
g)



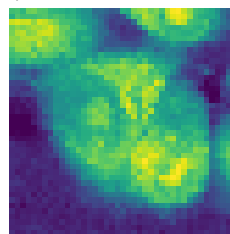
Brillouin shift

$t = 1$  min  
duration 20 min

h)



i)



$v_B^*$  [GHz]

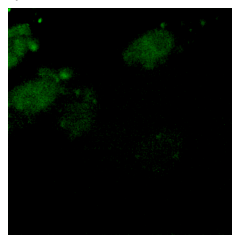
8.1

7.9

7.7

7.5

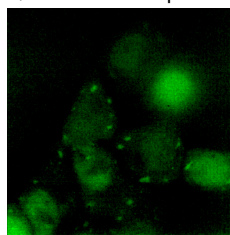
j)



Fluorescence  
intensity of GFP  
(green) after  
Brillouin acquisition

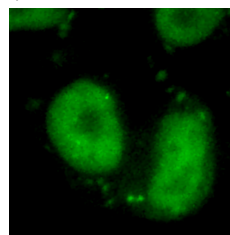
$t = 21$  min  
exposure 900 ms

k)

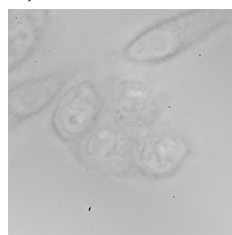


3  $\mu$ m

l)



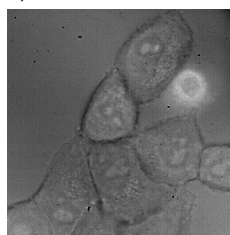
m)



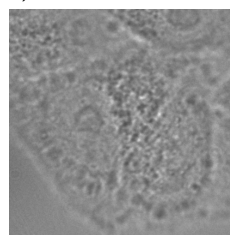
Brightfield intensity  
after Brillouin  
acquisition

$t = 21$  min  
exposure 4 ms

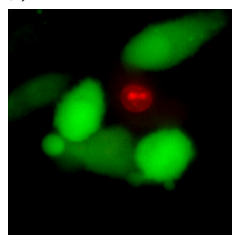
n)



o)



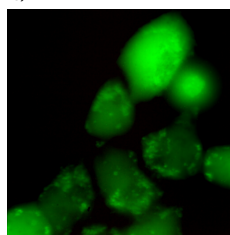
p)



Viability staining  
with fluorescein  
(green) and PI  
(red) after Brillouin  
acquisition

$t = 31$  min  
exposure 900 ms

q)



r)

