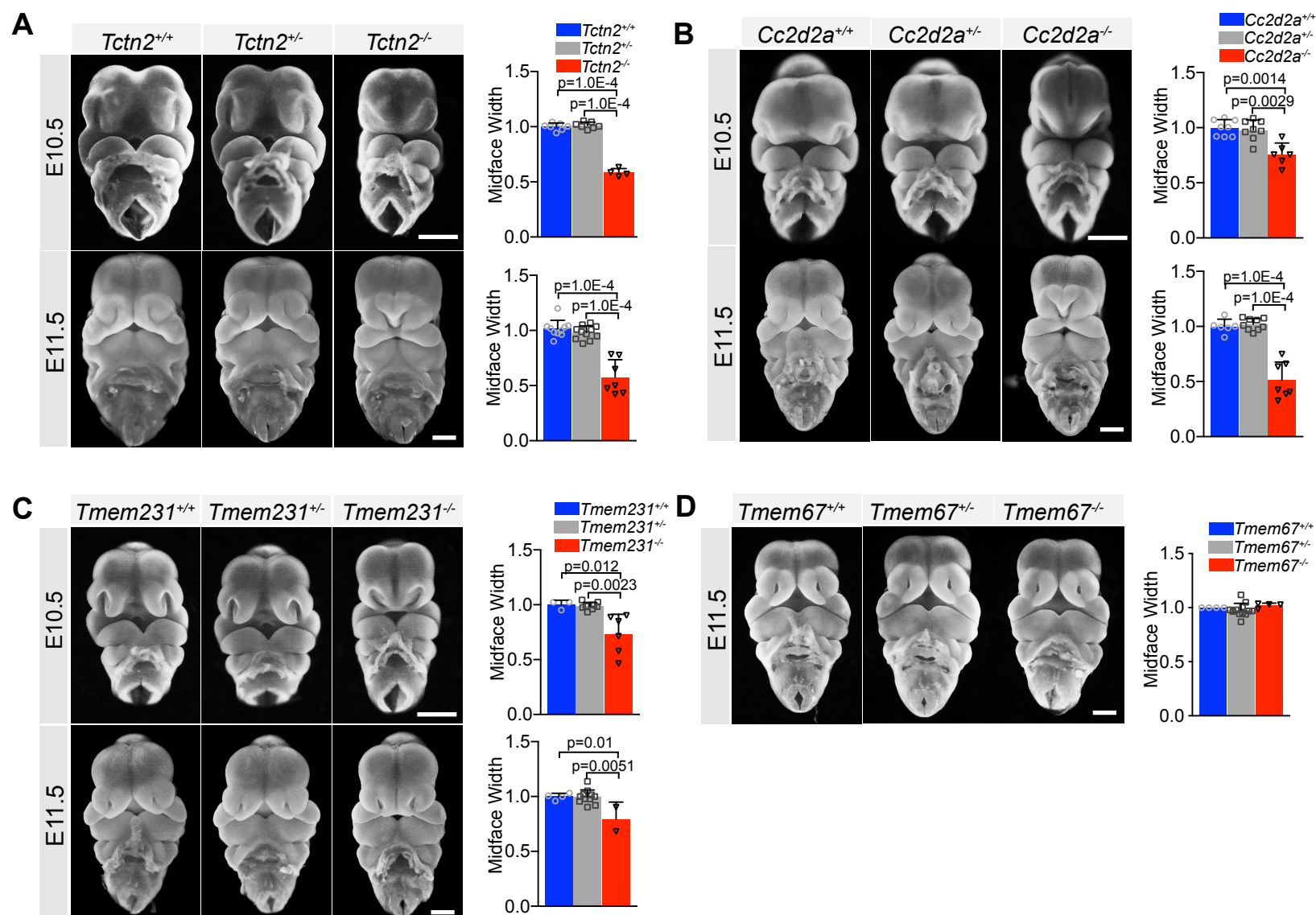


Figure 1- Figure Supplement 1. The ciliary MKS transition zone complex is essential for midline facial development



Reproduced frontal view images from Figure 1 of *Tctn2* (A), *Cc2d2a* (B), *Tmem231* (C), wildtype and null embryos at E10.5 and E11.5 with the addition of heterozygous embryos. (D) *Tmem67* null and wildtype E11.5 embryos reproduced from Figure 1 with addition of heterozygous embryos. Quantification of midface width at respective timepoints measured via one-way Anova followed by Tukey's multiple comparisons test. Error bars represent the standard deviation (SD) and each data point indicates a biological replicate (biologically distinct sample). Scale bar indicates 500µm.