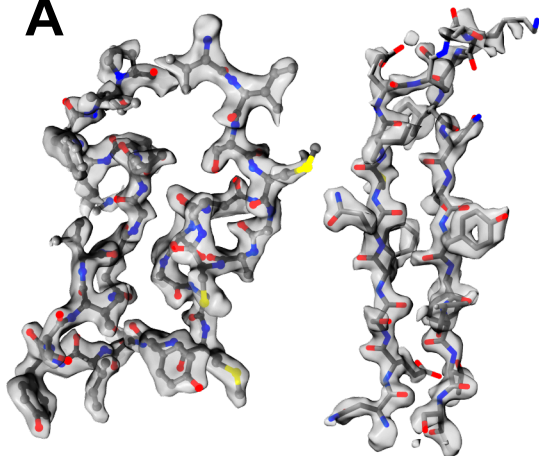
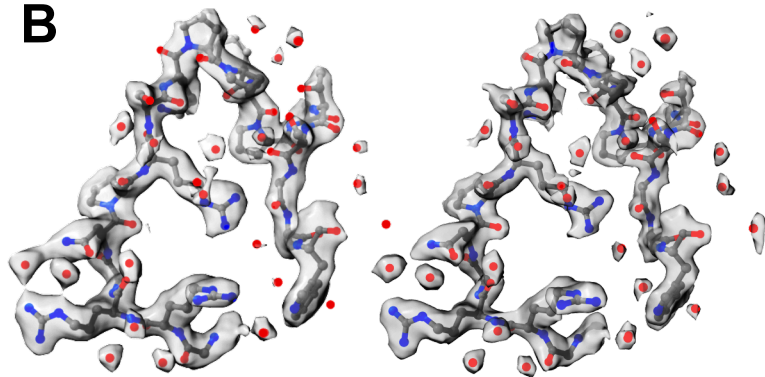
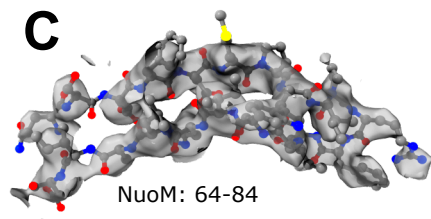


A

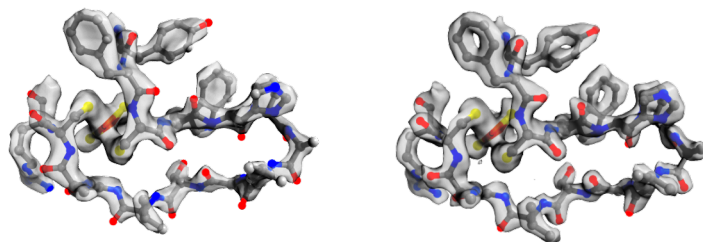
NuoB: 123-150

NuoCD: 527-546
β-sheet**B**

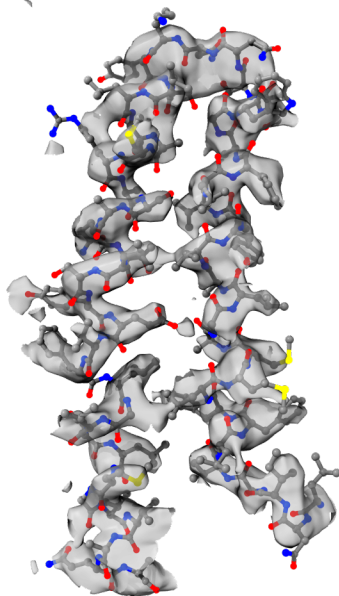
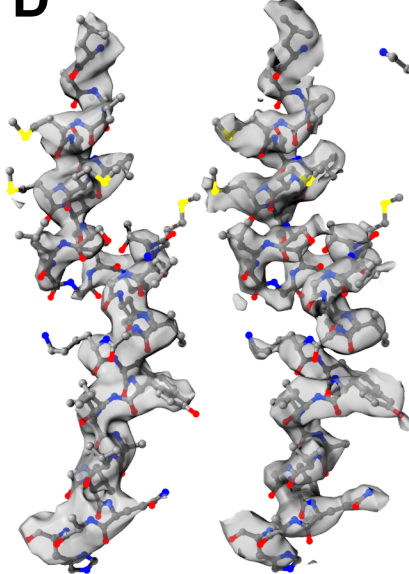
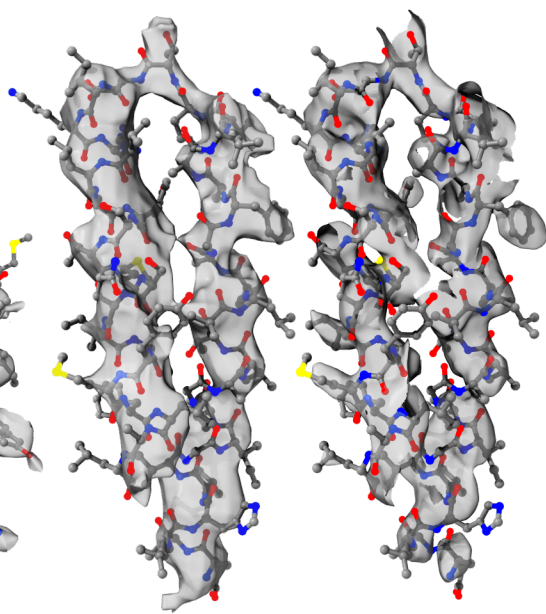
RELION 3.1

PHENIX ResolveCryoEM
NuoF: 192-210, H₂O**C**

NuoM: 64-84



RELION 3.1

PHENIX ResolveCryoEM
NuoG: 32-46**D**NuoH: 112-171
TM3-4RELION 3.1 PHENIX ResolveCryoEM
NuoN: 372-406
TM12RELION 3.1 PHENIX ResolveCryoEM
NuoL: 278-323
TM9-10