

Supplementary file 2

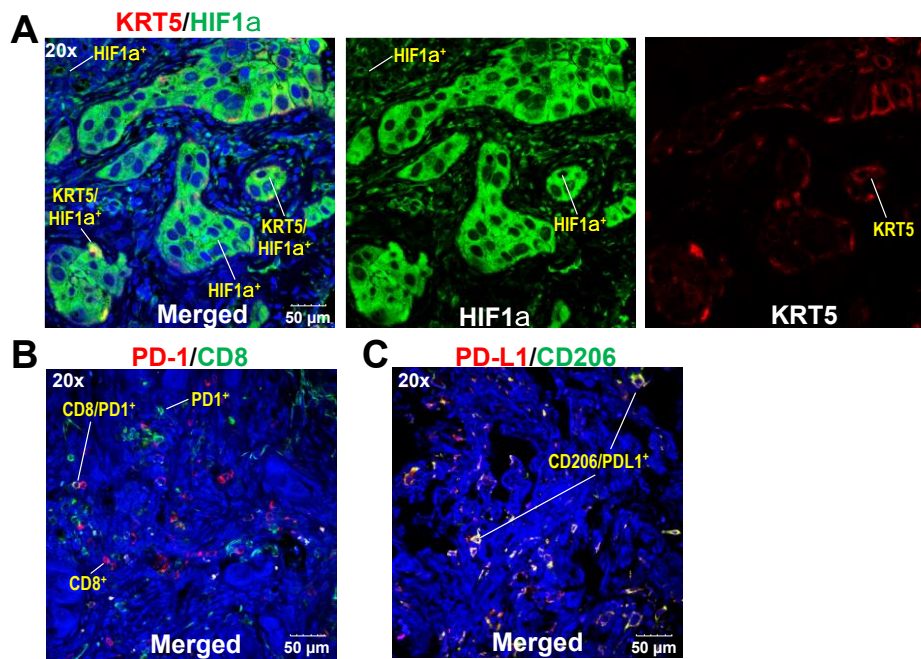


Fig. S1. Primary NSCLC tissue of UK131 patient stains positive for squamous cell carcinoma marker, PD-1 and PD-L1. Freshly resected CA lung tissue of UK131 was FFPE-processed, sectioned as 4 μm slices, stained for KRT5 (squamous cell carcinoma marker)/HIF1α in **A**, PD-1/CD8 in **B**, and PD-L1/CD206 in **C**, and analyzed by confocal microscopy as described in the Experimental.

