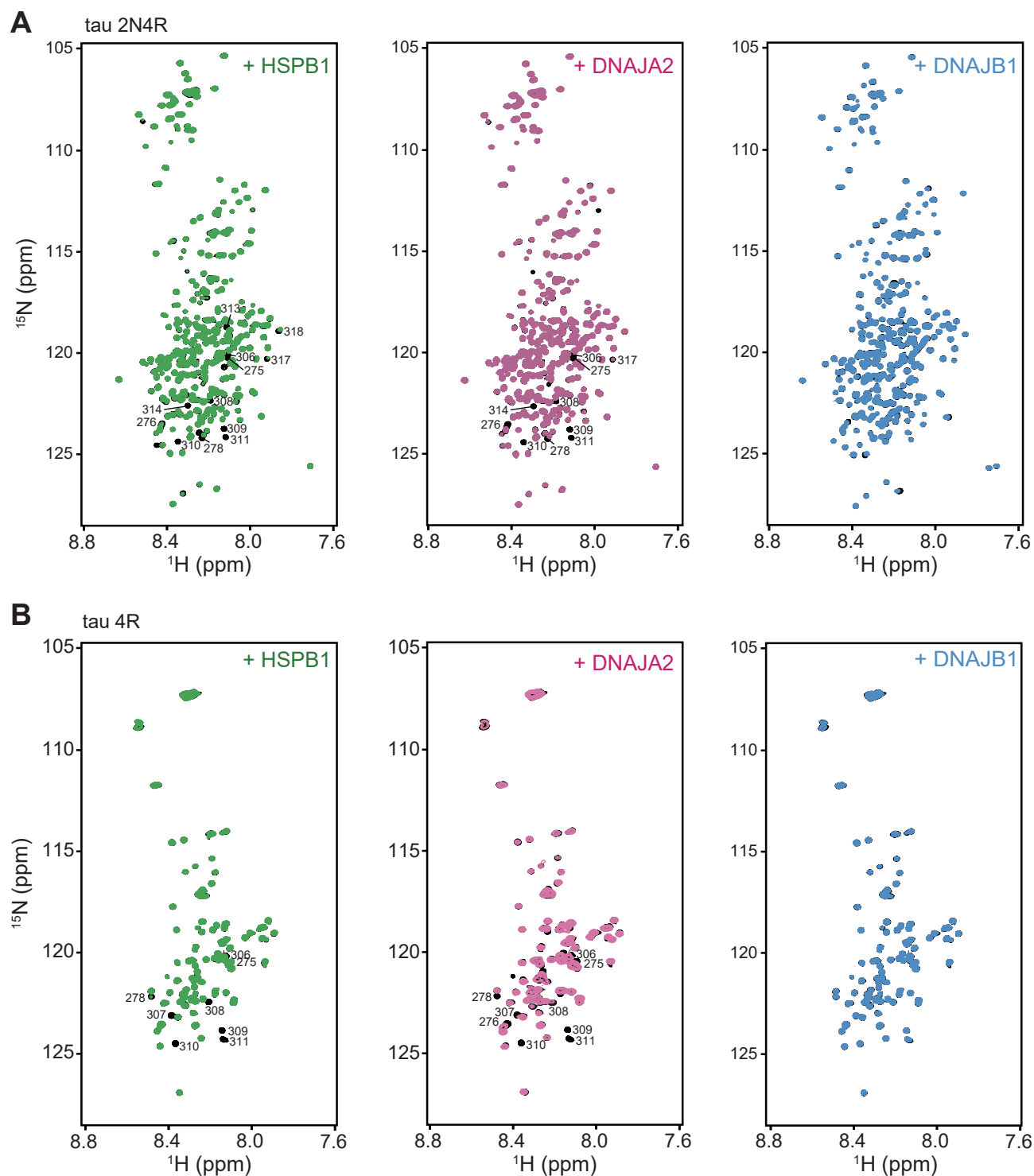


**Figure 1 – figure supplement 1**



**Figure 1 – figure supplement 1**

**Interaction of chaperones with monomeric tau.**  $^1\text{H}$ - $^{15}\text{N}$  TROSY-HSQC spectra of full length tau (2N4R, A) or tau<sup>4R</sup> (B) alone (black) and upon addition of 2-fold excess of HSPB1 (green), DNAJA2 (purple), or DNAJB1 (blue) chaperones. Residues from the PHF6 and PHF6\* aggregation-prone regions, that interact with HSPB1 and DNAJA2 chaperones, are indicated on the tau spectra.