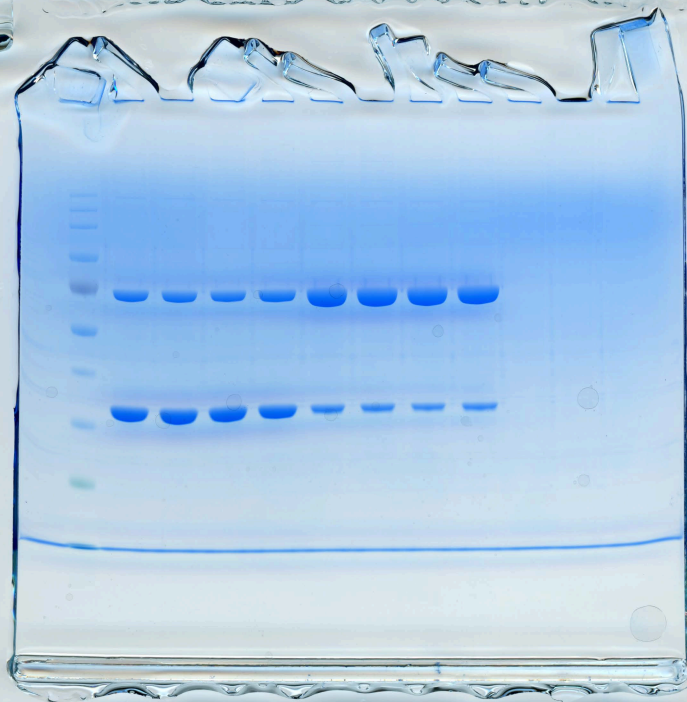
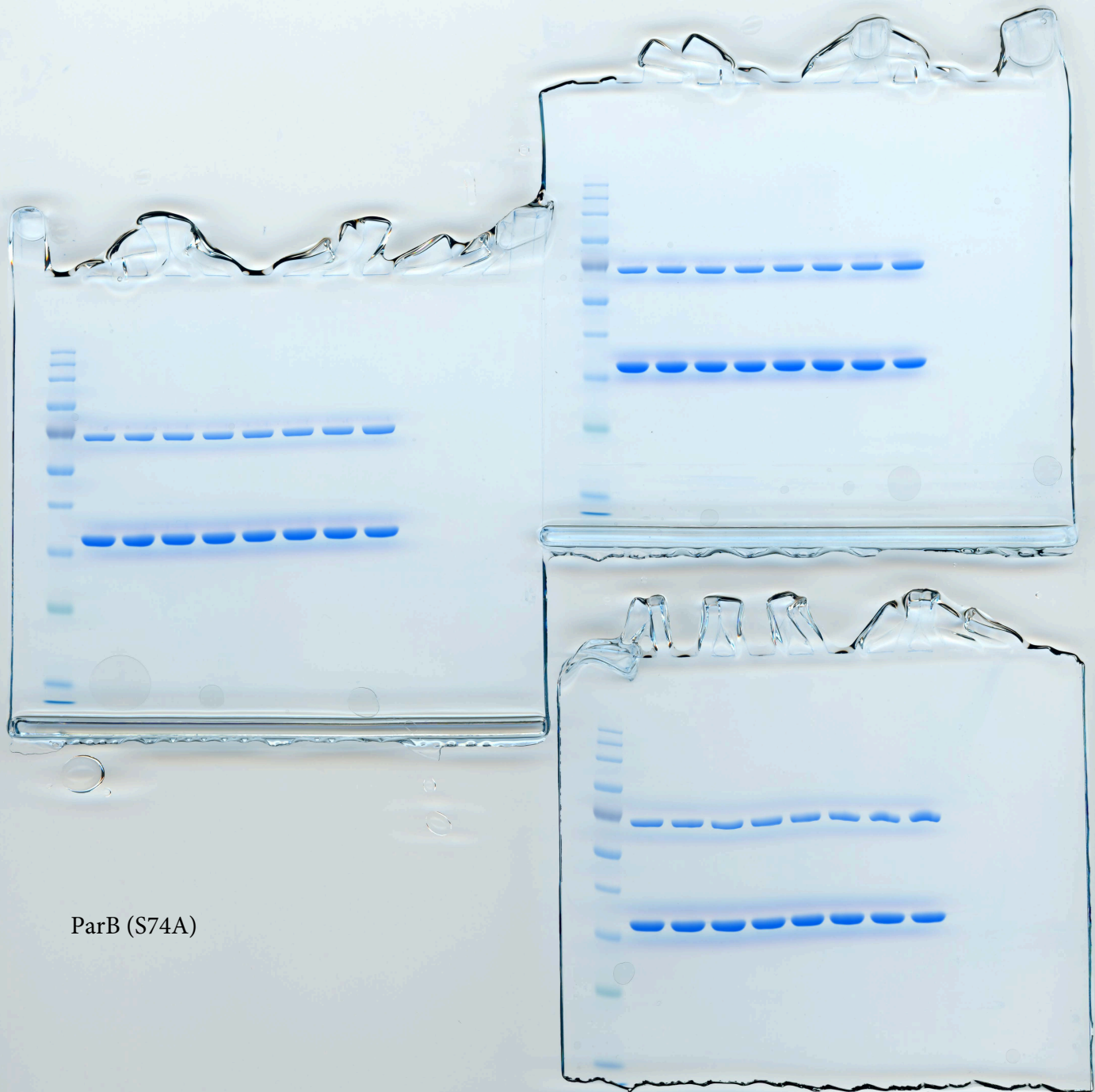


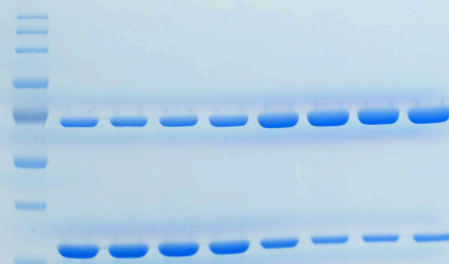
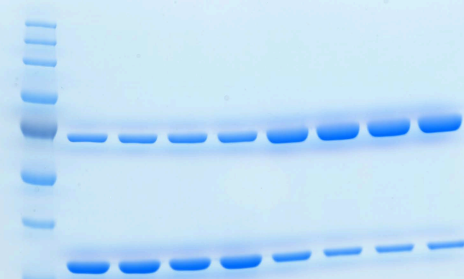
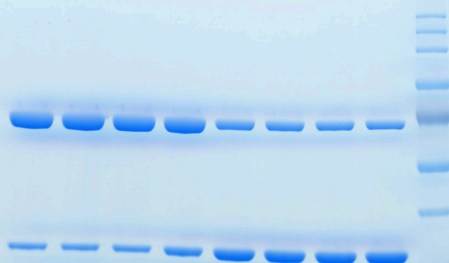
ParB (WT)

lanes# 1 to 8 from ladder, same as appeared in figure





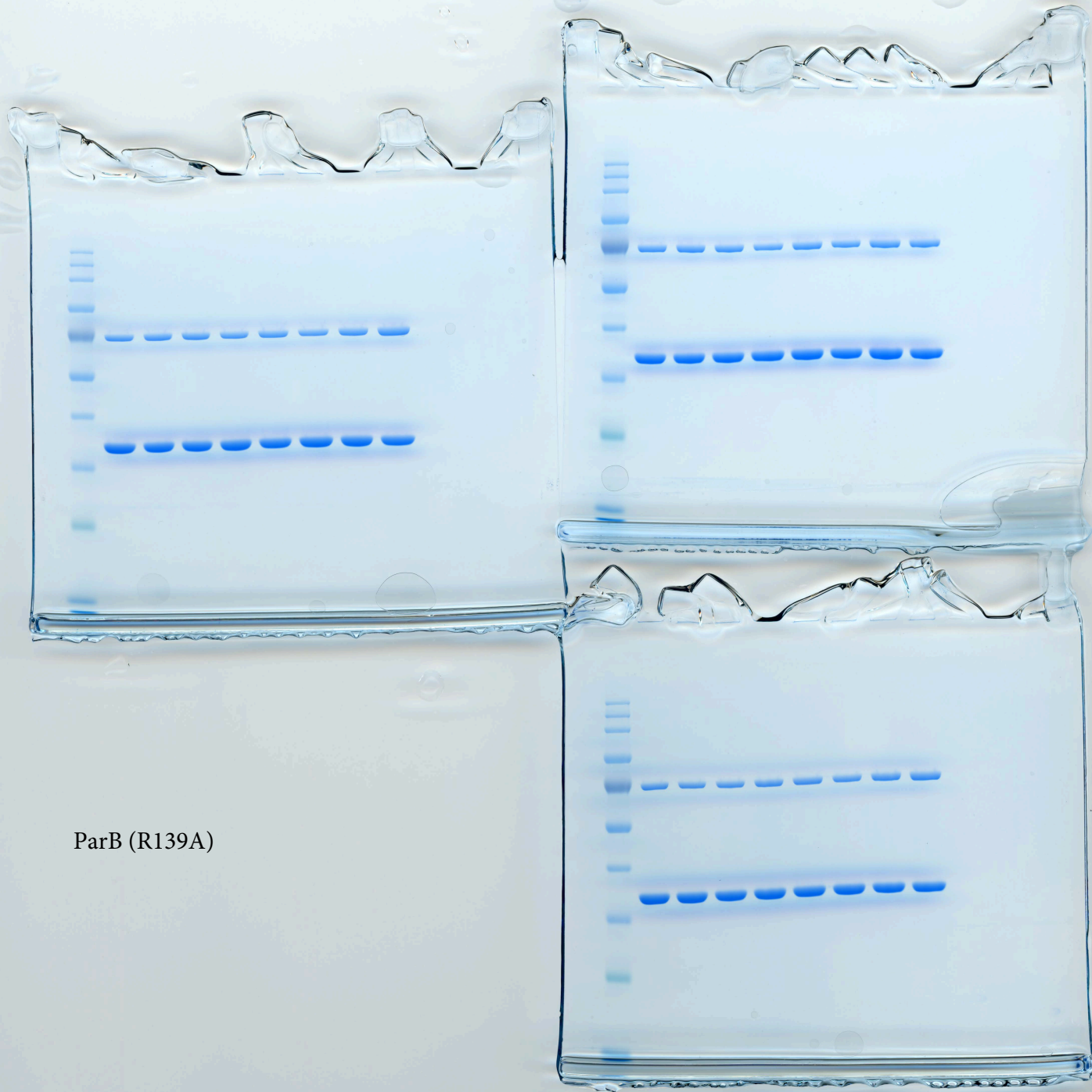
ParB (S74A)

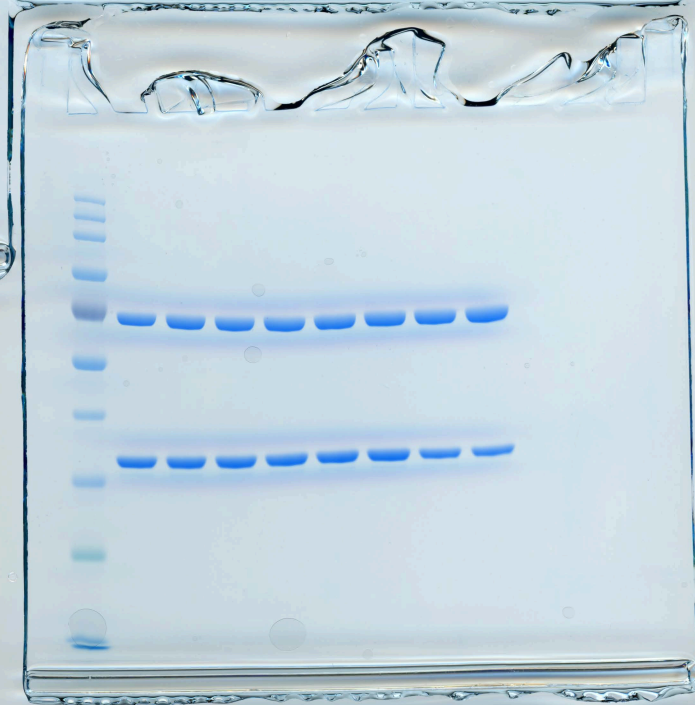
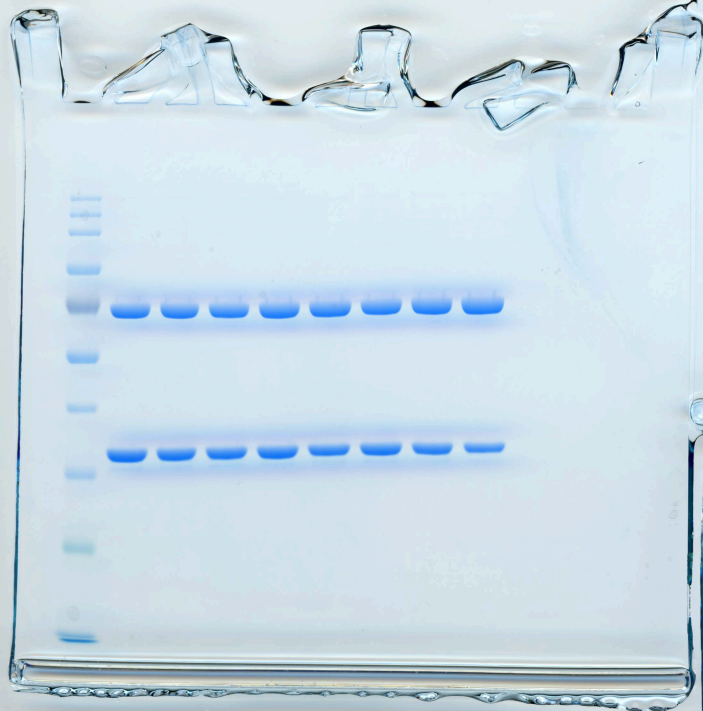


ParB (Q82A)

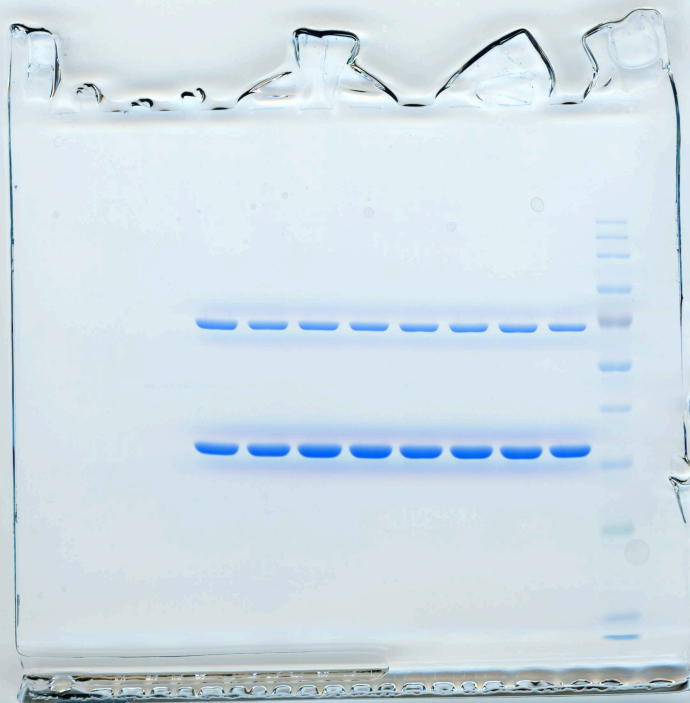


ParB (R139A)

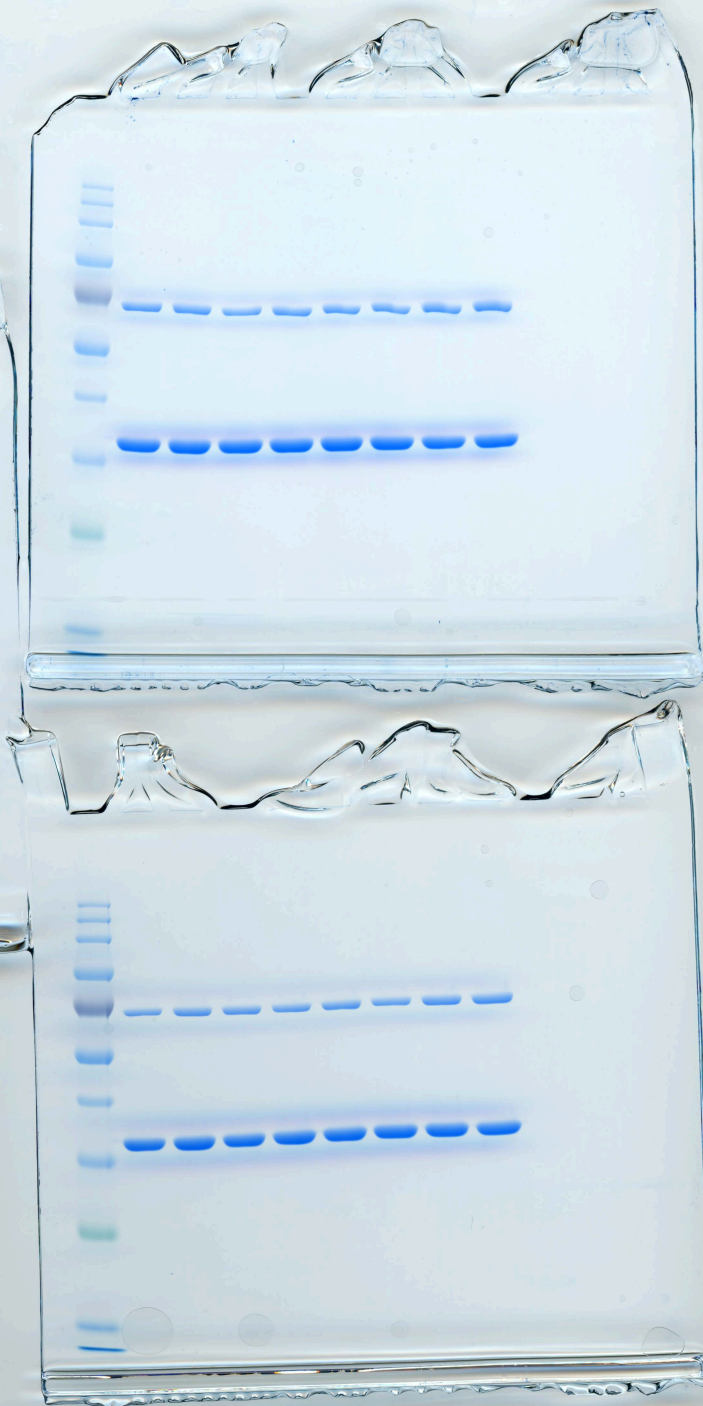




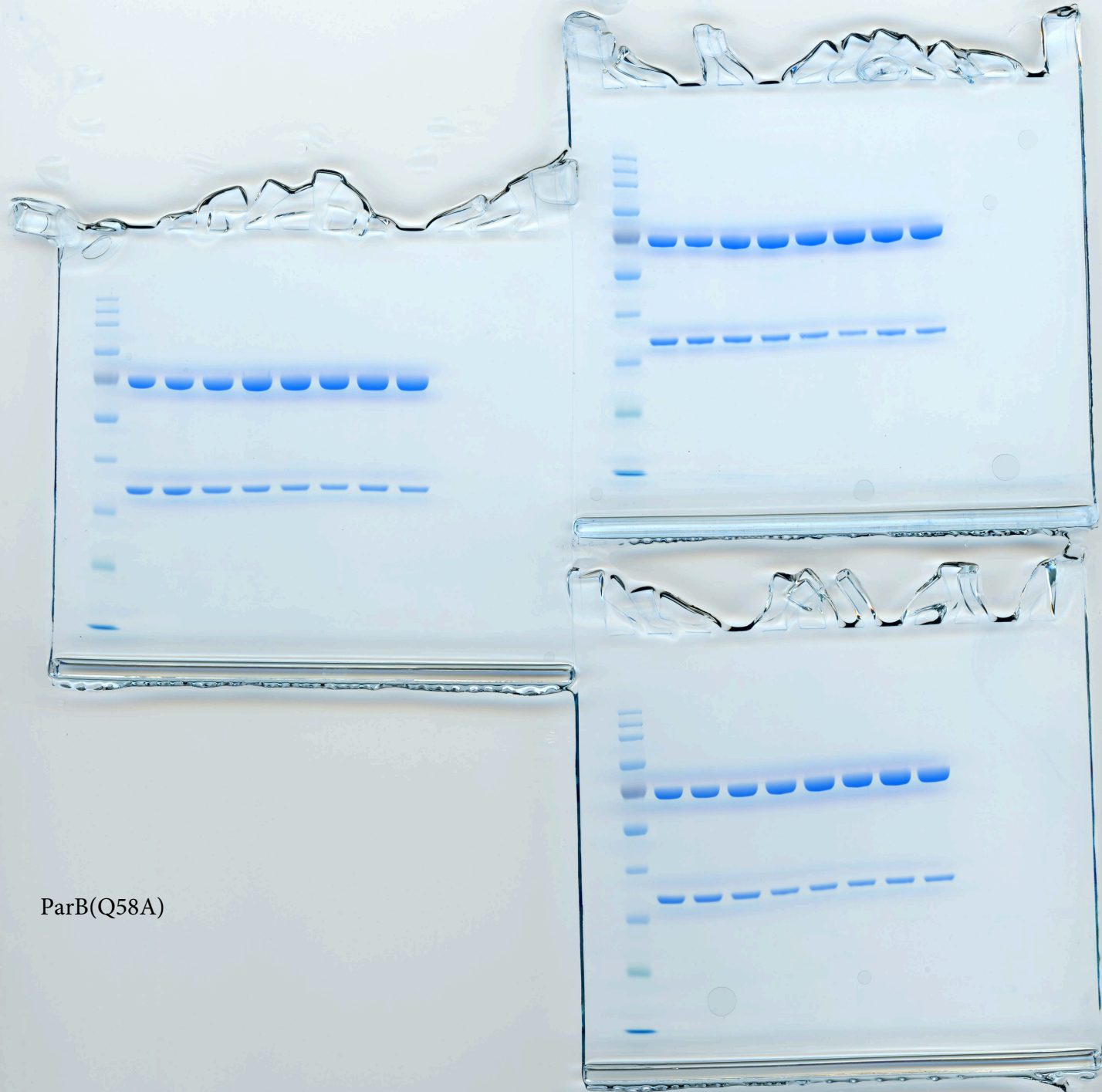
ParB (N136A)



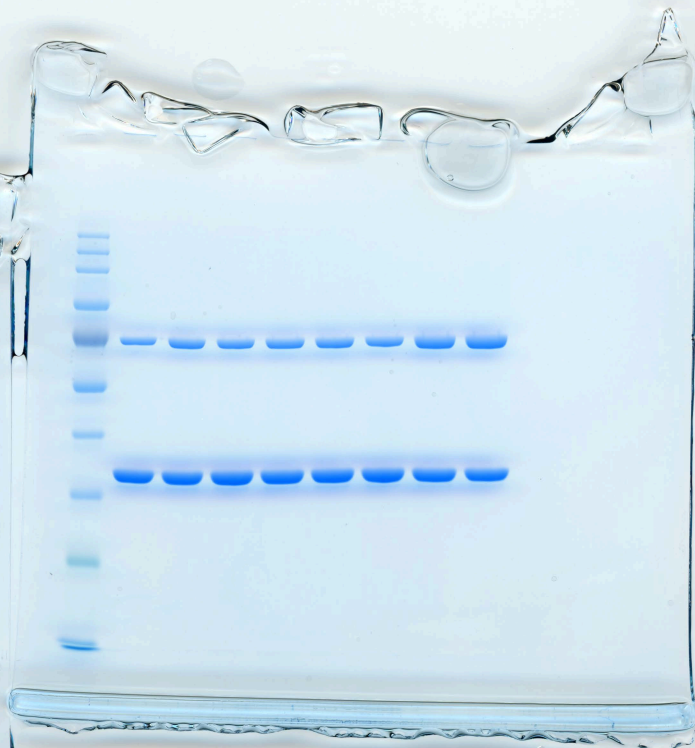
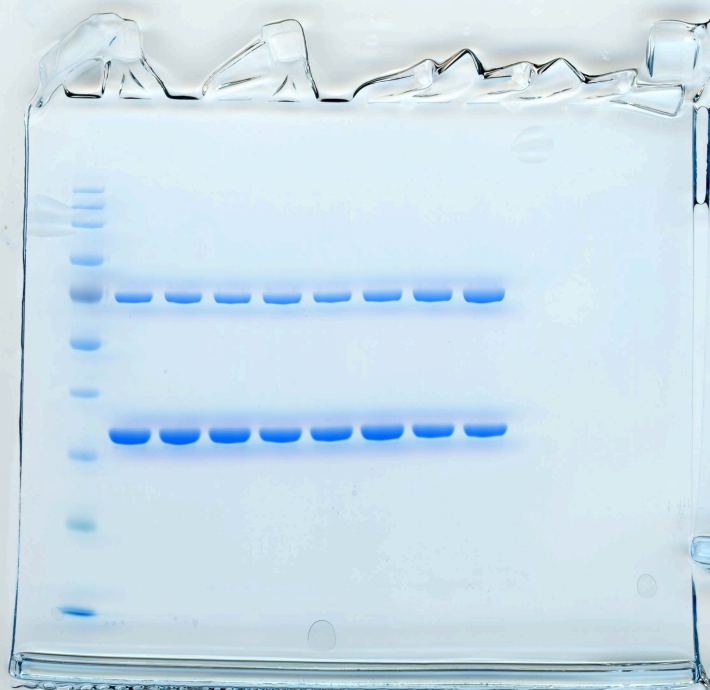
ParB (R103A)



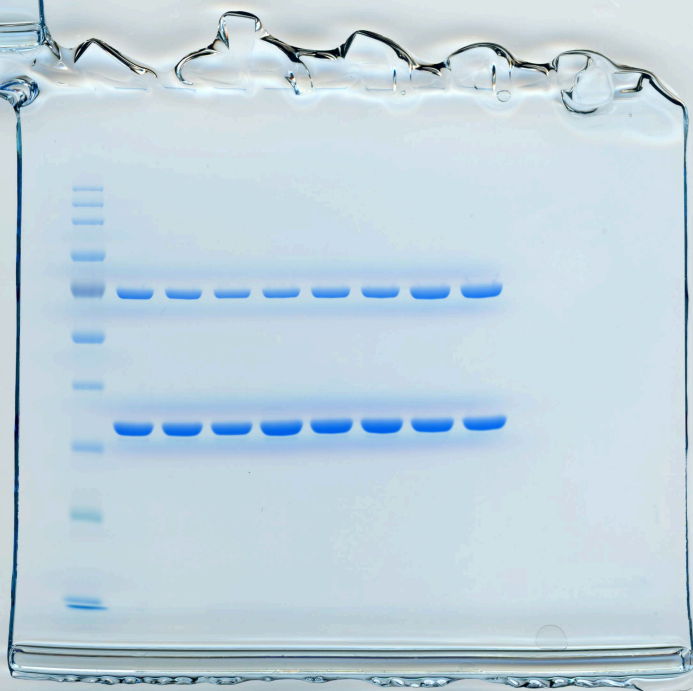




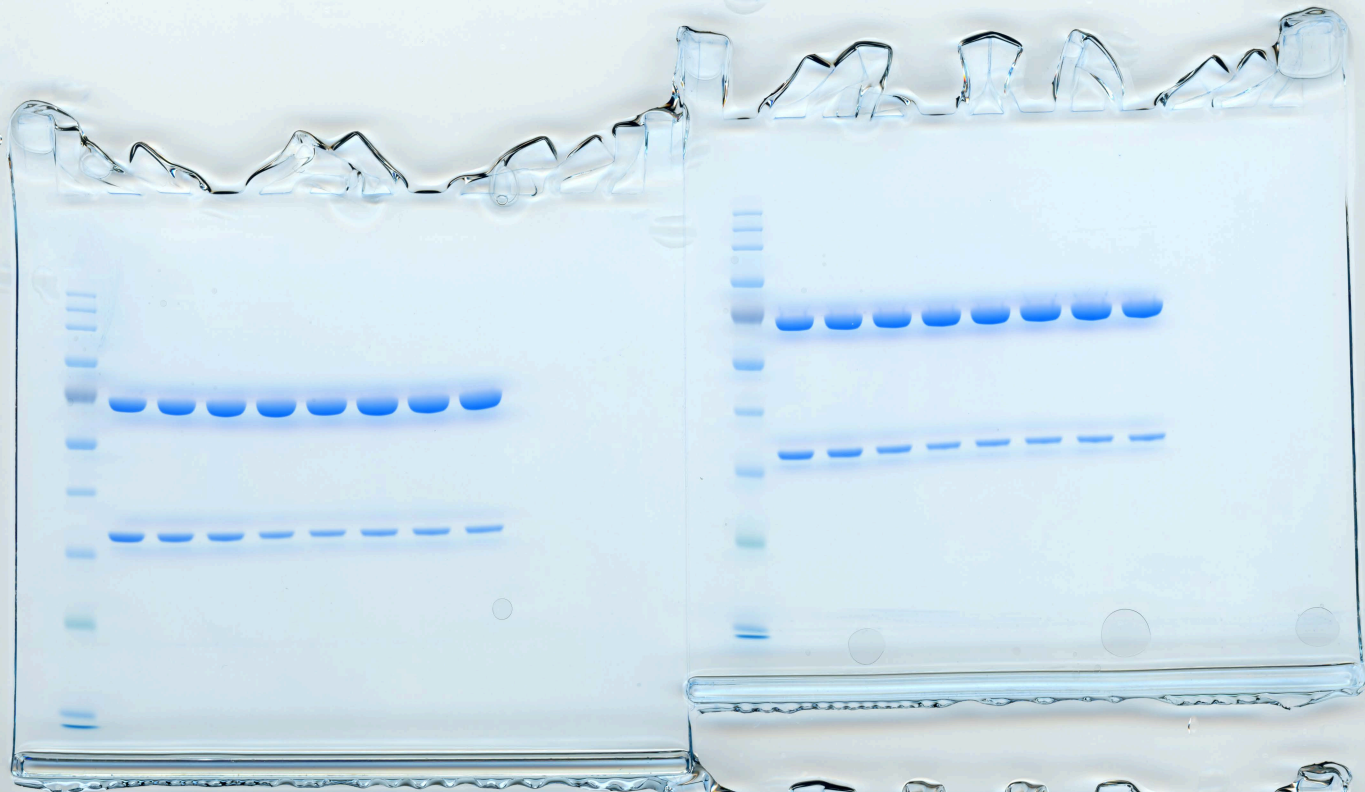
ParB(Q58A)



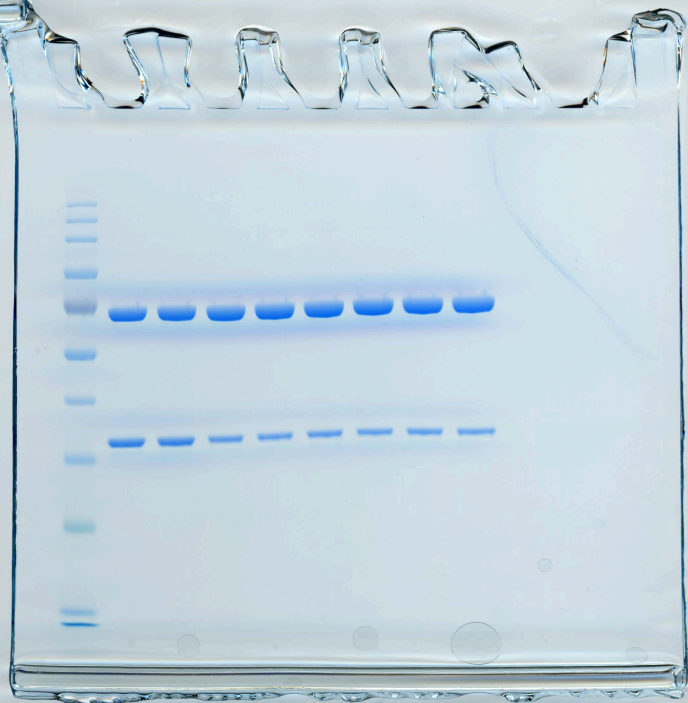
ParB (R60A)

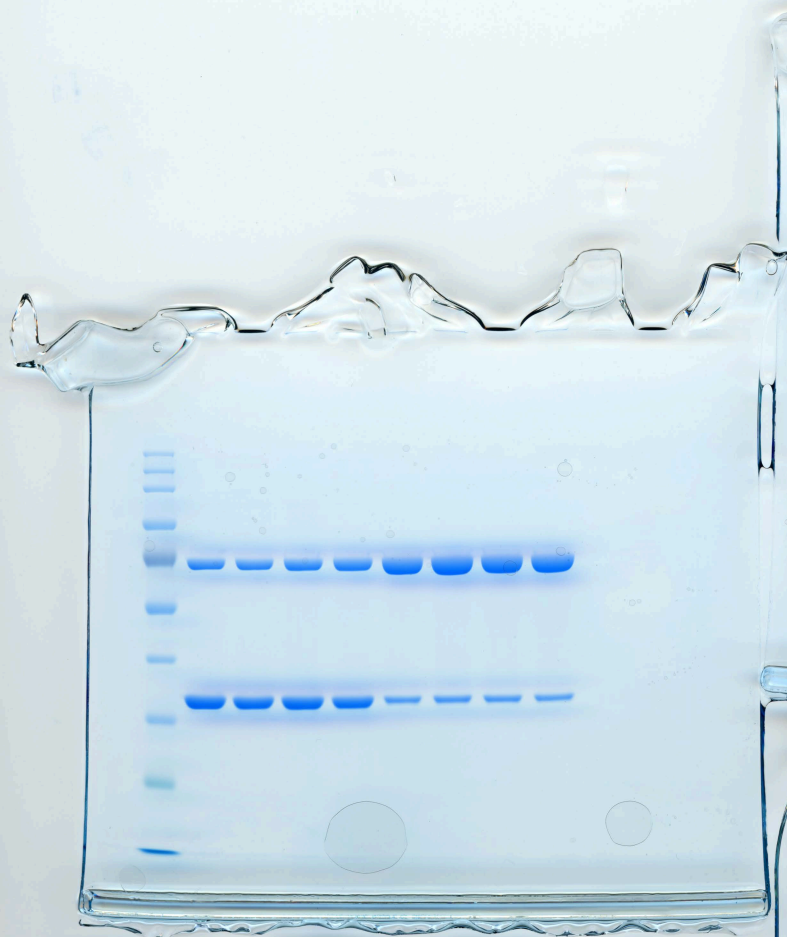




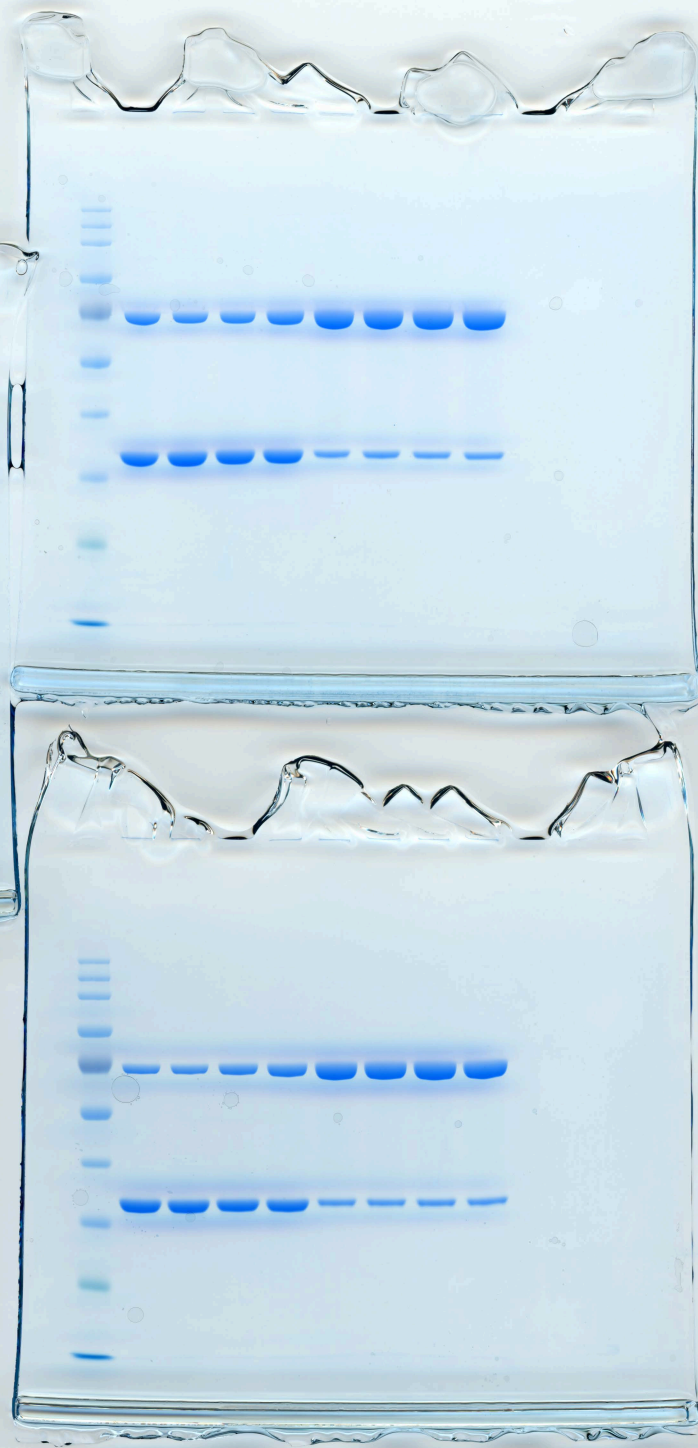


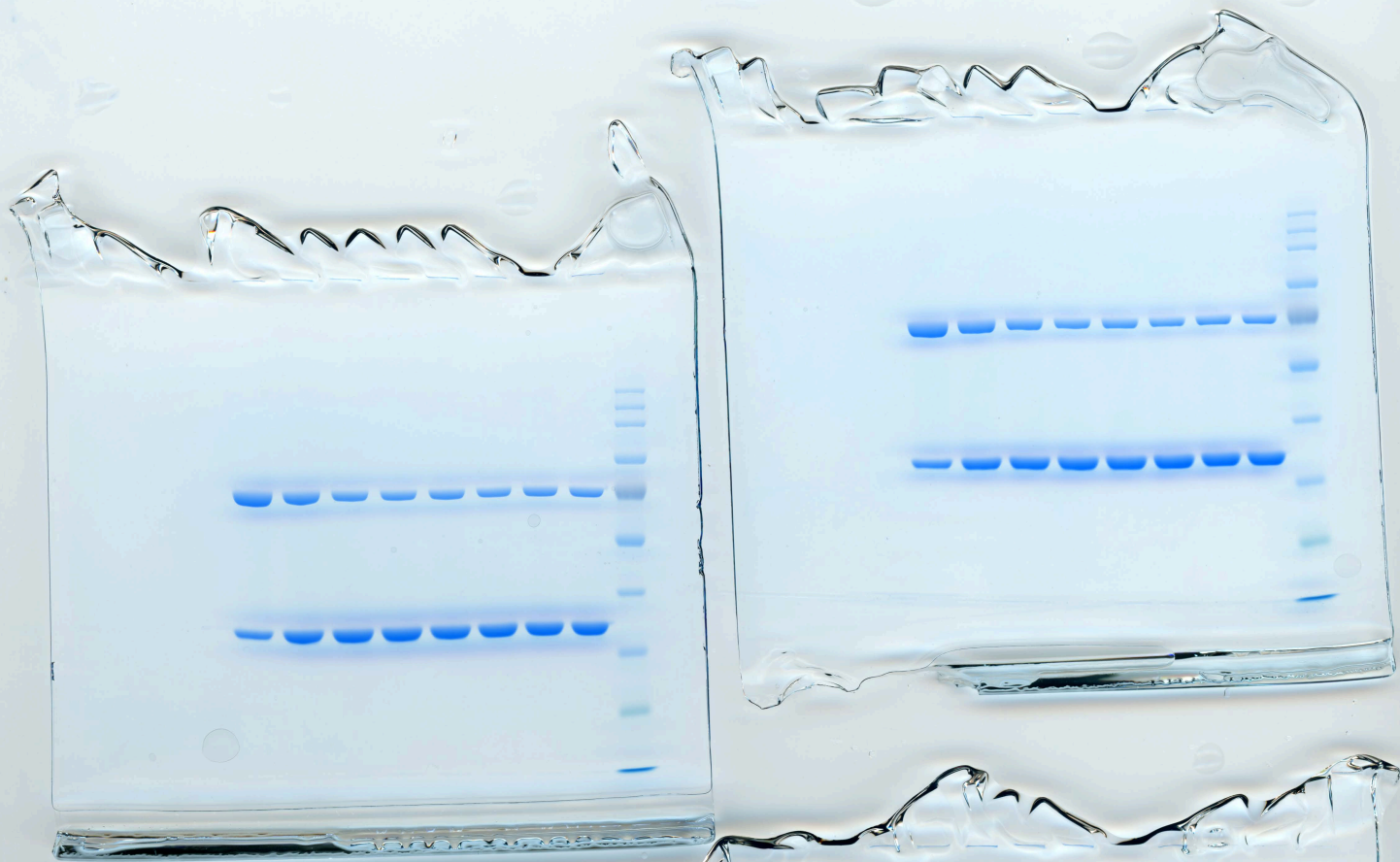
ParB (E135A)



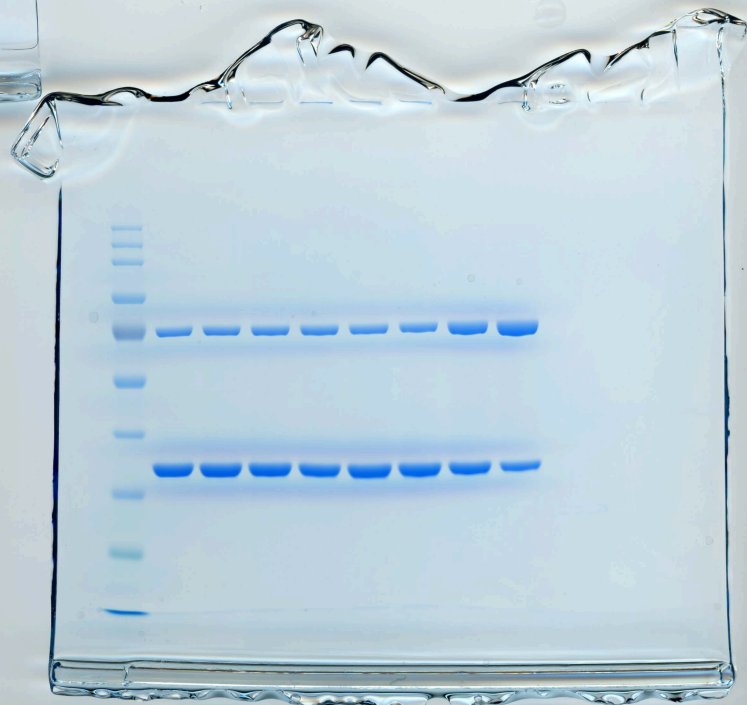


ParB(E102A)





ParB(G79S)





ParB (R104A)

