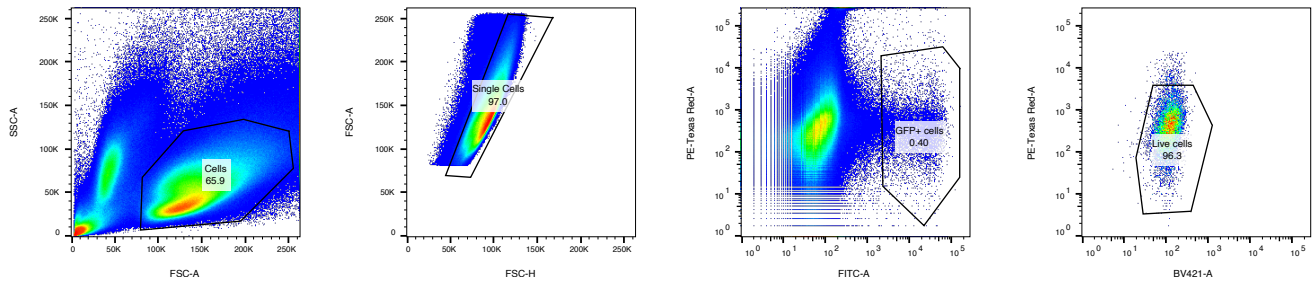
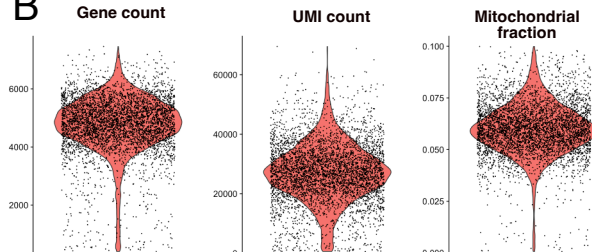


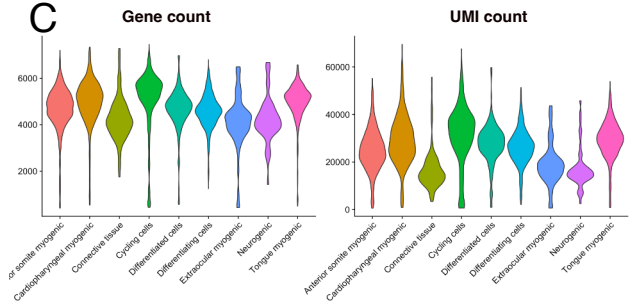
A

Myf5^{GFP-P/+} E12.5

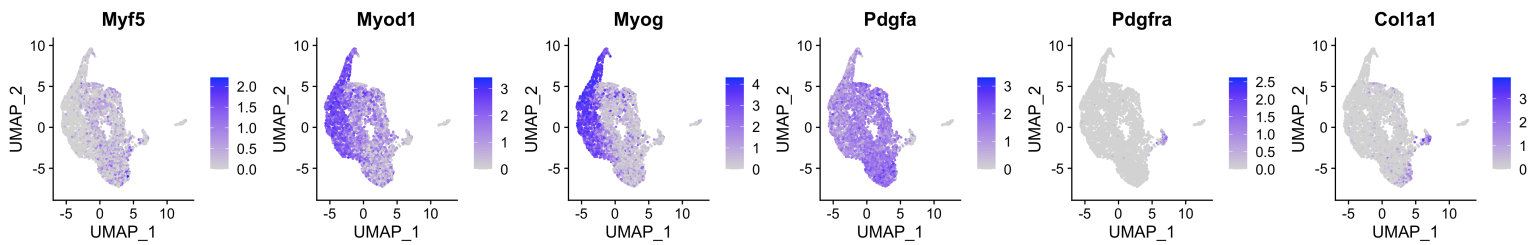
B



C

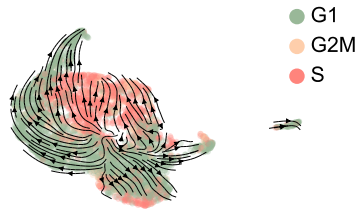


D



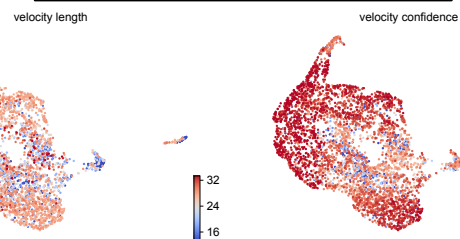
E

Cell cycle phases



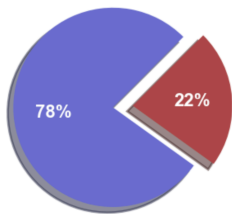
F

scvelo metrics

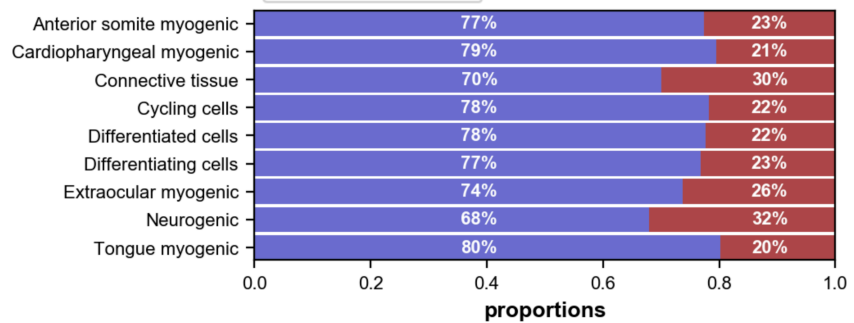


G

■ spliced ■ unspliced



■ spliced ■ unspliced



H

	Anterior somite myogenic	Cardiopharyngeal myogenic	Connective tissue	Cycling cells	Differentiated cells	Differentiating cells	Extraocular myogenic	Neurogenic	Tongue myogenic
velocity_length	24.866	24.0137	16.4945	26.3694	22.5581	29.0369	21.7269	14.3981	23.6558
velocity_confidence	0.890012	0.83876	0.807856	0.920214	0.911377	0.92695	0.899938	0.848084	0.774076