

C	C	A	T	T	G	C	A	G	G	A	A	T	C	A	T	T	C	T	G	T	G	T	G	G	G	G	T	C	T	A	C	A	T	T	C	T	C	A	T	-	Reference		
OIOca2 T2																																											
C	C	A	T	T	G	C	A	G	G	A	A	T	C	A	T	T	C	T	G	T	G	T	G	G	G	G	T	C	T	A	C	A	T	T	C	T	C	A	T	-	36.34% (20556 reads)		
C	C	A	T	T	G	C	A	G	G	A	A	T	C	A	T	T	C	T	G	-	-	T	G	G	G	G	T	C	T	A	C	A	T	T	C	T	C	A	T	-	30.82% (17438 reads)		
C	C	A	T	T	G	C	A	G	G	A	A	T	C	A	T	T	C	T	G	-	-	-	-	G	G	G	T	C	T	A	C	A	T	T	C	T	C	A	T	-	1.73% (978 reads)		
C	C	A	T	T	G	C	A	G	G	A	A	T	C	A	T	T	C	T	G	-	-	-	-	-	-	-	-	-	-	-	-	-	-	-	-	-	-	-	-	-	1.58% (896 reads)		
-	-	-	-	-	-	-	-	-	-	-	-	-	-	-	-	-	-	-	-	-	-	T	G	G	G	G	T	C	T	A	C	A	T	T	C	T	C	A	T	-	1.56% (883 reads)		
C	C	A	T	T	G	C	A	G	G	A	A	T	C	A	T	T	C	T	-	-	-	-	-	-	-	-	-	-	-	-	-	-	-	-	-	-	-	-	-	-	1.34% (757 reads)		
C	C	A	T	T	G	C	A	G	G	A	A	T	C	A	T	T	C	T	C	-	-	-	-	A	T	T	C	T	A	C	A	T	T	C	T	C	A	T	-	1.07% (607 reads)			
C	-	-	-	-	-	-	-	-	-	-	-	-	-	-	-	-	-	-	-	-	-	-	-	G	T	C	T	A	C	A	T	T	C	T	C	A	T	-	0.97% (549 reads)				
C	C	A	T	T	G	C	A	G	G	A	A	T	C	A	T	T	C	A	G	G	A	A	T	G	T	G	G	G	T	C	T	A	C	A	T	T	C	T	C	A	T	-	0.91% (513 reads)
C	C	A	T	T	G	C	A	G	G	A	A	T	C	A	T	-	-	-	-	-	-	-	G	G	G	G	T	C	T	A	C	A	T	T	C	T	C	A	T	-	0.76% (428 reads)		
C	C	A	T	T	G	C	A	G	G	A	A	T	C	A	T	T	-	-	-	-	-	G	T	G	G	G	G	T	C	T	A	C	A	T	T	C	T	C	A	T	-	0.71% (399 reads)	
C	C	A	T	T	G	C	A	G	G	A	A	T	C	A	T	T	C	T	G	-	-	G	G	G	G	G	T	C	T	A	C	A	T	T	C	T	C	A	T	-	0.69% (392 reads)		
C	C	A	T	T	G	C	A	G	G	A	A	T	C	A	T	T	C	T	-	T	G	T	G	G	G	G	T	C	T	A	C	A	T	T	C	T	C	A	T	-	0.69% (390 reads)		
C	C	A	T	T	G	C	A	G	G	A	A	T	C	A	T	T	C	T	A	T	G	G	G	G	G	T	C	T	A	C	A	T	T	C	T	C	A	T	-	0.64% (362 reads)			
C	C	A	T	T	G	C	A	G	G	A	A	T	C	A	A	C	A	T	T	C	C	T	G	C	A	A	A	G	G	T	C	T	A	C	A	T	T	C	T	-	0.59% (335 reads)		
C	C	A	T	T	G	C	A	G	G	A	A	T	C	A	T	T	C	T	G	-	-	-	G	G	G	G	T	C	T	A	C	A	T	T	C	T	C	A	T	-	0.57% (324 reads)		
-	-	-	-	-	-	-	-	-	-	-	-	-	-	-	-	-	-	-	-	-	T	G	T	G	G	G	G	T	C	T	A	C	A	T	T	C	T	C	A	T	-	0.53% (301 reads)	
C	C	A	T	T	G	C	A	G	G	-	-	-	-	-	-	-	-	-	-	-	-	-	-	G	G	T	C	T	A	C	A	T	T	C	T	C	A	T	-	0.51% (286 reads)			
C	C	A	T	T	G	C	A	G	G	A	A	T	C	A	T	T	C	T	-	-	-	-	-	-	-	-	-	-	-	A	C	A	T	T	C	T	C	A	T	-	0.49% (276 reads)		
C	C	A	T	T	G	C	A	G	G	A	A	T	C	A	T	T	C	T	G	C	T	G	T	G	G	G	T	C	T	A	C	A	T	T	C	T	C	A	-	0.47% (264 reads)			
C	C	A	T	T	G	C	A	G	G	A	A	T	C	A	T	-	-	-	-	-	-	-	-	-	-	-	-	-	-	-	-	-	-	-	-	-	-	-	-	-	0.41% (232 reads)		
C	C	A	T	T	G	C	A	G	G	A	A	T	C	A	T	-	-	-	-	-	-	G	T	G	G	G	G	T	C	T	A	C	A	T	T	C	T	C	A	T	-	0.39% (222 reads)	
C	C	A	T	T	G	C	A	G	G	A	A	T	C	A	T	T	C	T	G	-	G	T	G	G	G	G	T	C	T	A	C	A	T	T	C	T	C	A	T	-	0.39% (220 reads)		
C	C	A	T	T	G	-	-	-	-	-	-	-	-	-	-	-	-	-	-	-	-	T	G	G	G	G	T	C	T	A	C	A	T	T	C	T	C	A	T	-	0.36% (205 reads)		
C	C	A	T	T	G	C	A	G	G	A	A	T	C	A	T	T	C	T	G	-	-	C	G	G	G	G	T	C	T	A	C	A	T	T	C	T	C	A	T	-	0.35% (200 reads)		
C	C	A	T	T	G	C	A	G	G	A	A	T	C	A	T	T	C	T	G	T	G	-	G	G	G	G	T	C	T	A	C	A	T	T	C	T	C	A	T	-	0.35% (200 reads)		
C	C	A	T	T	G	C	A	G	G	A	A	T	C	A	T	T	G	G	G	G	T	C	T	A	C	A	T	C	A	T	G	T	G	G	G	G	T	C	T	-	0.31% (178 reads)		
C	C	A	T	T	G	C	A	G	G	A	A	T	C	A	T	T	C	A	-	T	G	T	G	G	G	G	T	C	T	A	C	A	T	T	C	T	C	A	T	-	0.26% (148 reads)		
-	-	-	-	-	-	-	-	-	-	-	-	-	-	-	-	-	-	-	-	-	-	-	-	G	G	T	C	T	A	C	A	T	T	C	T	C	A	T	-	0.26% (146 reads)			
C	C	A	T	T	G	C	A	G	G	A	A	T	C	A	A	T	-	-	-	-	-	G	T	G	G	G	G	T	C	T	A	C	A	T	T	C	T	C	A	T	-	0.26% (146 reads)	
C	C	A	T	T	G	C	A	G	G	A	A	T	C	A	T	T	C	T	G	A	A	T	G	A	T	G	T	G	G	G	T	C	T	A	C	A	T	T	-	0.26% (145 reads)			
C	C	A	T	T	G	C	A	G	G	A	A	T	C	A	T	T	C	T	-	-	-	-	-	-	-	-	-	-	-	-	-	-	-	-	-	-	-	C	A	T	-	0.21% (119 reads)	
C	C	A	T	T	G	C	A	G	G	A	A	T	C	-	-	-	-	-	-	-	-	-	-	-	-	-	-	T	A	C	A	T	T	C	T	C	A	T	-	0.21% (116 reads)			
C	C	C	A	C	A	G	A	A	T	T	C	A	A	C	A	A	T	C	T	C	T	G	T	G	G	G	T	C	T	A	C	A	T	T	C	T	C	A	T	-	0.21% (116 reads)		
C	C	A	T	T	G	C	A	G	G	A	A	T	C	A	T	T	-	-	-	-	-	-	-	G	G	G	G	T	C	T	A	C	A	T	T	C	T	C	A	T	-	0.20% (114 reads)	

bold

Substitutions

Insertions

-

Deletions

Predicted cleavage position

C	C	A	T	T	G	C	A	G	G	A	A	T	C	A	T	T	C	T	G	T	G	T	G	T	G	G	G	T	C	T	A	C	A	T	T	C	T	C	A	T	-	Reference		
OIOca2 T2																																												
C	C	A	T	T	G	C	A	G	G	A	A	T	C	A	T	T	C	T	G	T	G	T	G	G	G	G	T	C	T	A	C	A	T	T	C	T	C	A	T	-	60.15% (35666 reads)			
C	C	A	T	T	G	C	A	G	G	A	A	T	C	A	T	T	C	T	G	-	-	T	G	G	G	G	T	C	T	A	C	A	T	T	C	T	C	A	T	-	21.50% (12747 reads)			
C	C	A	T	T	G	C	A	G	G	A	A	T	C	A	T	T	C	T	G	G	G	T	G	G	T	G	G	G	G	T	C	T	A	C	A	T	T	C	T	C	A	T	-	1.16% (686 reads)
C	C	A	T	T	G	C	A	G	G	A	A	T	C	A	T	T	C	T	G	-	-	-	-	G	G	G	T	C	T	A	C	A	T	T	C	T	C	A	T	-	1.03% (609 reads)			
C	C	A	T	T	G	C	A	G	G	A	A	T	C	A	T	T	C	T	G	-	-	-	-	-	G	G	T	C	T	A	C	A	T	T	C	T	C	A	T	-	0.85% (505 reads)			
C	C	A	T	T	G	C	A	G	G	A	A	T	C	A	T	T	C	T	G	-	-	G	G	G	G	G	T	C	T	A	C	A	T	T	C	T	C	A	T	-	0.84% (500 reads)			
C	C	A	T	T	G	C	A	G	G	A	A	T	C	A	T	T	C	T	-	T	G	T	G	G	G	G	T	C	T	A	C	A	T	T	C	T	C	A	T	-	0.81% (481 reads)			
C	C	A	T	T	G	C	A	G	G	A	A	T	C	A	T	-	-	-	-	-	G	T	G	G	G	G	T	C	T	A	C	A	T	T	C	T	C	A	T	-	0.78% (462 reads)			
C	C	A	T	T	G	C	A	G	G	A	A	T	C	A	T	T	C	T	G	-	-	-	-	-	-	-	-	-	-	-	-	-	-	-	-	-	-	-	-	-	-	0.71% (420 reads)		
C	C	A	T	T	G	C	A	G	G	A	A	T	C	A	T	T	C	A	-	T	G	T	G	G	G	G	T	C	T	A	C	A	T	T	C	T	C	A	T	-	0.48% (286 reads)			
C	C	A	T	T	G	C	A	G	G	A	A	T	C	A	T	T	-	-	-	-	G	T	G	G	G	G	T	C	T	A	C	A	T	T	C	T	C	A	T	-	0.44% (258 reads)			
C	C	A	T	T	G	C	A	G	G	A	A	T	C	A	T	T	C	T	G	A	T	T	C	C	T	G	T	G	G	G	T	C	T	A	C	A	T	T	-	0.35% (209 reads)				
C	C	A	T	T	G	C	A	G	G	A	A	T	C	A	T	T	C	T	G	T	G	A	T	G	T	G	G	G	T	C	T	A	C	A	T	T	C	T	-	0.35% (206 reads)				
C	C	A	T	T	G	C	A	G	G	A	A	T	C	A	A	A	A	T	G	-	-	T	G	G	G	G	T	C	T	A	C	A	T	T	C	T	C	A	T	-	0.34% (201 reads)			
C	C	A	T	T	G	C	A	G	G	A	A	T	C	A	T	T	C	T	-	-	-	-	-	-	-	-	-	-	-	A	C	A	T	T	C	T	C	A	T	-	0.28% (168 reads)			
C	C	A	T	T	G	C	A	G	G	A	A	T	C	A	T	T	C	T	T	T	G	A	A	-	-	-	T	C	A	T	T	C	T	T	C	T	C	A	T	-	0.26% (157 reads)			
C	C	A	T	T	G	C	A	G	G	A	A	T	C	A	T	T	C	T	G	T	G	G	T	G	G	G	G	T	C	T	A	C	A	T	T	C	T	C	A	-	0.26% (154 reads)			
C	C	A	T	T	G	C	A	G	G	A	A	T	C	A	T	T	C	T	G	-	-	C	G	G	G	G	T	C	T	A	C	A	T	T	C	T	C	A	T	-	0.26% (154 reads)			
-	-	-	-	-	-	-	-	-	-	-	-	-	-	-	-	-	-	-	-	-	-	T	G	G	G	G	T	C	T	A	C	A	T	T	C	T	C	A	T	-	0.22% (130 reads)			
C	C	A	T	T	G	C	A	G	G	A	A	T	C	A	T	T	C	T	G	-	-	-	-	-	-	-	T	C	T	A	C	A	T	T	C	T	C	A	T	-	0.22% (128 reads)			

bold Substitutions

Insertions

- Deletions

----- Predicted cleavage position

C	C	A	T	T	G	C	A	G	G	A	A	T	C	A	T	T	C	T	G	T	G	T	G	G	G	G	T	C	T	A	C	A	T	T	C	T	C	A	T	-	Reference			
OIOca2 T2																																												
C	C	A	T	T	G	C	A	G	G	A	A	T	C	A	T	T	C	T	G	T	G	T	G	G	G	G	T	C	T	A	C	A	T	T	C	T	C	A	T	-	33.72% (21701 reads)			
C	C	A	T	T	G	C	A	G	G	A	A	T	C	A	T	T	C	T	G	-	-	T	G	G	G	G	T	C	T	A	C	A	T	T	C	T	C	A	T	-	31.61% (20345 reads)			
C	C	A	T	T	G	C	A	G	G	A	A	T	C	A	T	T	C	T	G	G	T	G	G	G	G	T	C	T	A	C	A	T	T	C	T	C	A	T	-	6.40% (4119 reads)				
C	C	A	T	T	G	C	A	G	G	A	A	T	C	A	T	T	C	T	G	-	-	-	-	G	G	G	T	C	T	A	C	A	T	T	C	T	C	A	T	-	4.20% (2703 reads)			
C	C	A	T	T	G	C	A	G	G	A	A	T	C	A	T	T	C	T	G	-	-	-	-	-	G	G	T	C	T	A	C	A	T	T	C	T	C	A	T	-	1.47% (946 reads)			
C	C	A	T	T	G	G	G	C	C	A	T	-	-	-	-	-	-	-	-	-	-	-	-	G	G	G	T	C	T	A	C	A	T	T	C	T	C	A	T	-	0.73% (470 reads)			
C	C	A	T	T	G	C	A	G	G	A	A	T	C	A	T	T	-	-	-	-	-	-	-	G	T	G	G	G	T	C	T	A	C	A	T	T	C	T	C	A	T	-	0.72% (462 reads)	
C	C	A	T	T	G	C	A	G	G	A	A	T	C	A	T	-	-	-	-	-	-	-	-	G	T	G	G	G	T	C	T	A	C	A	T	T	C	T	C	A	T	-	0.71% (459 reads)	
C	C	A	T	T	G	C	A	G	G	A	A	T	C	G	T	T	C	T	G	-	-	T	G	G	G	G	T	C	T	A	C	A	T	T	C	T	C	A	T	-	0.64% (415 reads)			
-	-	-	-	-	-	-	-	-	-	-	-	-	-	-	-	-	-	-	-	-	-	-	-	-	-	-	-	-	-	-	-	-	-	-	-	-	-	-	-	-	0.57% (369 reads)			
-	-	-	-	-	-	-	-	-	-	-	-	-	-	-	-	-	-	-	-	T	G	T	G	G	G	G	T	C	T	A	C	A	T	T	C	T	C	A	T	-	0.57% (364 reads)			
C	C	A	T	T	G	C	A	G	G	A	A	T	C	A	T	T	G	T	T	T	T	G	G	A	C	A	G	A	C	A	G	T	G	T	G	G	G	G	T	-	-	-	-	0.55% (355 reads)
C	C	A	T	T	G	C	A	G	G	A	A	T	C	A	T	T	C	A	-	T	G	T	G	G	G	G	T	C	T	A	C	A	T	T	C	T	C	A	T	-	0.51% (330 reads)			
C	C	A	T	T	G	C	A	G	G	A	A	T	C	A	T	T	C	T	G	T	G	-	G	G	G	G	T	C	T	A	C	A	T	T	C	T	C	A	T	-	0.50% (324 reads)			
C	C	A	T	T	G	C	A	G	G	A	A	T	C	A	T	T	C	T	G	-	-	G	G	G	G	T	C	T	A	C	A	T	T	C	T	C	A	T	-	0.50% (320 reads)				
-	-	-	-	-	-	-	-	-	-	-	-	-	-	-	-	-	-	-	-	-	-	T	G	G	G	G	T	C	T	A	C	A	T	T	C	T	C	A	T	-	0.43% (279 reads)			
C	C	A	T	T	G	C	A	G	G	A	A	T	C	A	T	T	C	T	A	T	G	T	G	G	G	G	T	C	T	A	C	A	T	T	C	T	C	A	T	-	0.41% (261 reads)			
C	C	A	T	T	G	C	A	G	G	A	A	T	C	A	T	T	C	T	-	-	-	-	-	-	-	-	-	-	-	-	-	-	-	-	-	-	-	C	A	T	-	0.38% (245 reads)		
C	C	A	T	T	G	C	A	G	G	A	A	T	C	A	T	T	C	T	G	T	T	T	G	T	G	G	G	T	C	T	A	C	A	T	T	C	T	C	-	-	-	-	0.35% (225 reads)	
C	C	A	T	T	G	C	A	G	G	A	A	T	C	-	-	-	-	-	-	-	-	T	G	G	G	G	T	C	T	A	C	A	T	T	C	T	C	A	T	-	0.33% (213 reads)			
C	C	A	T	T	G	C	A	G	G	A	A	T	C	A	T	T	C	T	-	-	-	-	-	-	-	-	-	-	A	C	A	T	T	C	T	C	A	T	-	0.31% (199 reads)				
C	C	A	T	T	G	C	A	G	G	A	A	T	C	A	G	-	-	-	G	A	A	T	G	G	G	G	T	C	T	A	C	A	T	T	C	T	C	A	T	-	0.28% (183 reads)			
-	-	-	-	-	-	-	-	-	-	-	-	-	-	-	-	-	-	-	-	-	-	G	T	G	G	G	G	T	C	T	A	C	A	T	T	C	T	C	A	T	-	0.28% (181 reads)		
C	C	A	T	T	G	C	A	G	G	A	A	T	C	A	T	T	C	T	G	T	C	A	A	T	T	C	T	G	T	G	G	G	G	T	C	T	A	C	A	-	-	-	0.27% (176 reads)	
C	C	A	T	T	G	C	A	G	G	A	A	T	C	A	T	T	C	T	G	G	G	T	G	G	G	G	T	C	T	A	C	A	T	T	C	T	C	A	-	-	-	-	0.27% (173 reads)	
C	C	A	T	T	G	C	A	G	G	A	A	T	C	A	T	T	C	T	G	-	-	-	G	G	G	G	T	C	T	A	C	A	T	T	C	T	C	A	T	-	0.27% (172 reads)			
C	C	A	T	T	G	C	A	G	G	A	A	T	C	A	T	T	C	T	G	-	-	-	-	-	-	-	-	-	-	-	-	-	-	-	-	-	-	-	-	-	-	0.25% (160 reads)		
C	C	A	T	T	G	C	A	G	G	A	A	T	C	A	A	T	-	-	-	-	-	G	T	G	G	G	G	T	C	T	A	C	A	T	T	C	T	C	A	T	-	0.24% (155 reads)		
C	C	A	T	T	G	C	A	G	G	A	A	T	C	A	T	T	C	T	G	-	G	T	G	G	G	G	T	C	T	A	C	A	T	T	C	T	C	A	T	-	0.24% (154 reads)			
T	G	C	A	G	G	A	A	T	C	A	T	T	C	A	C	A	T	T	C	T	G	T	G	G	G	G	T	C	T	A	C	A	T	T	C	T	C	A	T	-	0.22% (140 reads)			
-	-	-	-	-	-	-	-	-	-	-	-	-	-	-	-	-	-	-	-	-	-	-	-	-	-	-	-	-	-	-	-	-	-	-	-	-	-	-	-	-	-	0.20% (130 reads)		
-	-	-	-	-	-	-	-	-	-	-	-	-	-	-	-	-	-	-	-	-	-	-	-	-	-	-	-	-	-	-	-	-	-	-	-	-	-	-	-	-	-	0.20% (129 reads)		

bold
Substitutions

Insertions


-
Deletions

Predicted cleavage position

C C A T T G C A G G A A T C A T T C T G T G T G G G G T C T A C A T T C T C A T - Reference
OIOca2 T2

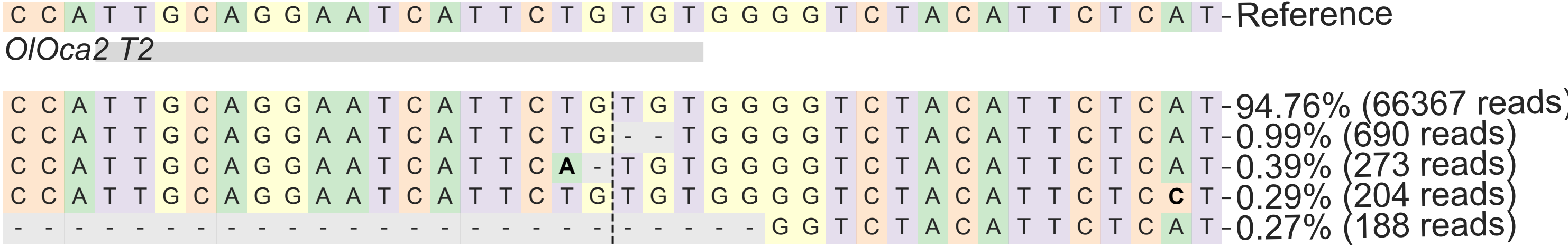
C	C	A	T	T	G	C	A	G	G	A	A	T	C	A	T	T	C	T	G	T	G	T	G	G	G	G	T	C	T	A	C	A	T	T	C	T	C	A	T	-	93.12% (62082 reads)
C	C	A	T	T	G	C	A	G	G	A	A	T	C	A	T	T	C	T	G	-	-	T	G	G	G	G	T	C	T	A	C	A	T	T	C	T	C	A	T	-	2.37% (1581 reads)
C	C	A	T	T	G	C	A	G	G	A	A	T	C	A	T	T	-	-	-	-	G	T	G	G	G	G	T	C	T	A	C	A	T	T	C	T	C	A	T	-	0.56% (371 reads)
C	C	A	T	T	G	C	A	G	G	A	A	T	C	A	T	T	C	T	G	T	G	T	G	G	G	G	T	C	T	A	C	A	T	T	C	T	C	c	T	-	0.23% (153 reads)
C	C	A	T	T	G	C	A	G	G	A	A	T	C	A	T	T	C	T	G	C	A	T	T	C	T	G	T	G	G	G	G	T	C	T	A	C	A	T	T	-	0.22% (147 reads)

bold Substitutions


 Insertions

- Deletions

----- Predicted cleavage position



bold Substitutions

 Insertions

- Deletions

----- Predicted cleavage position

: CasJÁpool2 OIOca2

C C A T T G C A G G A A T C A T T C T G T G T G G G G T C T A C A T T C T C A T - Reference

OIOca2 T2

C C A T T G C A G G A A T C A T T C T G T G T G G G G T C T A C A T T C T C A T - 94.78% (55185 reads)
C C A T T G C A G G A A T C A T T C T G - - T G G G G T C T A C A T T C T C A T - 1.63% (950 reads)

bold

-

Substitutions

Insertions

Deletions

Predicted cleavage position

: Cas9 pool3 *OIOca2*


C C A T T G C A G G A A T C A T T C T G T G T G G G G T C T A C A T T C T C A T - Reference

OIOca2 T2

C C A T T G C A G G A A T C A T T C T G T G T G G G G T C T A C A T T C T C A T - 97.63% (47900 reads)

bold

Substitutions



Insertions

-

Deletions

Predicted cleavage position

uninjected pool1 OIOca2

C C A T T G C A G G A A T C A T T C T G T G T G G G G T C T A C A T T C T C A T - Reference

OIOca2 T2

C C A T T G C A G G A A T C A T T C T G T G T G G G G T C T A C A T T C T C A T - 97.87% (46994 reads)

bold

Substitutions

Insertions

-

Deletions

Predicted cleavage position

uninjected pool2 *OIOca2*

C C A T T G C A G G A A T C A T T C T G T G T G G G G T C T A C A T T C T C A T -Reference

OIOca2 T2

C C A T T G C A G G A A T C A T T C T G T G T G G G G T C T A C A T T C T C A T -97.71% (55169 reads)
C C A T T G C A G G A A T C A T T C T G T G T G G G G T C T A C A T T C T C **c** T -0.21% (116 reads)

bold

-

Substitutions

Insertions

Deletions

Predicted cleavage position

uninjected pool3 *OIOca2*

A A T G C A T T T G T C A A T G G A T A C C C T G G G G A T G G T G G A C G A T-Reference

$O(R \times 2)$

A A T G C A T T T G T C A A T G G - - - - - G G A T G G T G G A C G A T	14.85% (12469 reads)
A A T G C A T T T G T C A A T G G A T - - - - - G G T G G A C G A T	13.73% (11530 reads)
A A T G C A T T T G T C A A T G G A T - - - - - G G G G A T G G T G G A C G A T	6.90% (5796 reads)
A A T G C A T T T G T C A A T G G A T - C C C T G G G G A T G G T G G A C G A T	6.62% (5554 reads)
A A T G C A T T T G T C A - - - - - T G G G G A T G G T G G A C G A T	4.73% (3970 reads)
A A T G C A T T T G T C A A T G G A T A G T G G A T G G T G G A C	3.45% (2897 reads)
A A T G C A T T T G T C - - - - - C C T G G G G A T G G T G G A C G A T	3.41% (2860 reads)
A A T G C A T T T G T C A A T G G A T A - - - T G G G G A T G G T G G A C G A T	3.17% (2659 reads)
A A T G C A T T T G T C A A T G G - - - - - G A T G G T G G A C G A T	1.71% (1432 reads)
A A T G C A T T T G T C A A T G G - - - - - G A T G G T G G A C G A T	1.62% (1363 reads)
- - - - - - - - - - - G A T A C C C T G G G G A T G G T G G A C G A T	1.55% (1305 reads)
G C A T T T G T C A A T G G G G A T G G T G G A C G A T	1.39% (1163 reads)
- - - - - - - - - - - C C C T G G G G A T G G T G G A C G A T	1.34% (1121 reads)
A A T G C A T T T G T C A A T G G A T A T C G T C C A C C A T C C C T G G G G A	1.31% (1096 reads)
A A T G C A T T T G T C A A G G G A T A T T G G A A A C C C C T G	1.19% (1000 reads)
A A T G C A T - - - - - - - - - - - G G G G A T G G T G G A C G A T	1.16% (978 reads)
A A T G C A T T T G T C A A T G G A T G - - G T G G G G A T G G T G G A C G A C	1.06% (889 reads)
A A T G C A T T T G T C A A T G G A T A T T T C C A C C C T G G G A T G G T G	1.04% (869 reads)
A A T G C A T T T G T C A A T G G A G - - - - G T G G A T G G T G G A C G A T	1.02% (853 reads)
- - - - - - - - - - - T G G T G A - - - T G G G G A T G G T G G A C G A T	0.99% (833 reads)
A A T G C A T T T G T C A A T - - - - - C C C T G G G G A T G G T G G A C G A T	0.93% (777 reads)
A A T G C A T T T G T C A A T T C T A A C C C T A A C C C T G G G G A T G G T G	0.92% (775 reads)
A A T G C A T T T G T C A A T G G C A A C C C T G G G G A T G G T G G A C G A T	0.91% (760 reads)
A A T G C A T T T G T C A A T G G A T A T C G T C C A C C A T C G T C C A C	0.87% (727 reads)
A A T G C A T T T G T C A A T G C C C A - C C T G G G G A T G G T G G A C G A T	0.85% (711 reads)
A A T -	0.83% (696 reads)
A A T G C A T T T G T C A A T G G A - - - - - G G G A T G G T G G A C G A T	0.73% (611 reads)
A A T G C A T T T G T C A A T G G A G C C A G C G C C T G G G G A T G G T G G A	0.70% (584 reads)
A A T G C A -	0.67% (563 reads)
A A T G C A T T T G T C A - - - - - - - - - - - C T G G G G A T G G T G G A C G A T	0.66% (553 reads)
A A T G C A T T T G T C A A T G G A T A - - - - - A T G G T G G A C G A T	0.65% (547 reads)
A A T G C A T T T G T C A A T G G A T A C C A T A C C T G G G G A T G G T G G A	0.63% (533 reads)
A A T G C A T T T G T C A A T G G A T A T T G A C A A A T G C A T G A T G G G G	0.63% (527 reads)
A T G C A T T T G T C A T G T T G A T G C C A C A C C A T A T C G T C C A C C A	0.61% (509 reads)
A A T G C A T T T G T C A A T G G - - - - - - - - - - - T G G A C G A T	0.57% (475 reads)
A A T G C A T T T G T C A A T G G A T A T A T C C A T T G G G G A T G G T G G A	0.55% (458 reads)
A A T G C A T T T G T C - - - - - - - - - - - T G G G G A T G G T G G A C G A T	0.52% (440 reads)
G G A G G A T C G T C C A C C A T C C A C C C T G G G G A T G G T G G A C G A T	0.51% (426 reads)
A A T G C A T T T G T C A A T G G A T G C C T G T C A G T T T C C C T G G G G A	0.50% (421 reads)
A A T G C A T T T G T C A A T G G A T A C C C T G G G G A T G G T G G A C G A T	0.42% (356 reads)
A A T G C A T T T G T C A A T G G A - - C C C T G G G G A T G G T G G A C G A T	0.42% (350 reads)
A A T G C A T T T G T C A A T G G A C A C A T C C C C A T C C C T G G G G A T G	0.41% (347 reads)
A T T T A T A T C G T C C A C - - - - - C A C T G G G G A T G G T G G A C G A T	0.34% (282 reads)
A A T G C A T T T G T C A A T G G A G G - - A T G G G G A T G G T G G A C G A T	0.33% (280 reads)
- - - - - - - - - - - A T G G - - - - - G A T G G T G G A C G A T	0.31% (264 reads)
A A T G C A T T T G T C A A T G G G G A - - T T G G G G A T G G T G G A C G A T	0.30% (249 reads)
A A T G C A T T T G T C A A T G G A T G A C A T G G G G A T G G G G A T G G G G	0.29% (244 reads)
A A T G C A T T T G T C A A T G G A T C G T C C A C C A T C C C C T G G G G A	0.28% (231 reads)
A A T G C A T T T G T C A A T G G A T A - - - - - A A T G G T G G A C G A T	0.26% (217 reads)
A A T G C A T T T G T C A A T G G - - - - - G G G T G G T G G A C G A T	0.26% (217 reads)

bold Substitutions
 □ Insertions
 - Deletions
 ----- Predicted cleavage position

A A T G C A T T T G T C A A T G G A T A C C C T G G G G A T G G T G G A C G A T - Reference																																										
OIRx2																																										
A	A	T	G	C	A	T	T	T	G	T	C	A	A	T	G	G	-	-	-	-	-	-	-	-	-	-	-	-	-	-	-	-	-	-	19.56% (17263 reads)							
A	A	T	G	C	A	T	T	T	G	T	C	A	A	T	G	G	A	T	-	-	-	-	-	-	-	-	-	-	-	-	-	-	-	-	10.83% (9562 reads)							
A	A	T	G	C	A	T	T	T	G	T	C	A	A	T	G	G	-	-	-	-	-	-	-	-	-	-	G	A	T	G	G	T	G	G	A	C	G	A	T	4.05% (3577 reads)		
-	-	-	-	-	-	-	-	-	-	-	-	-	-	-	-	-	-	-	-	-	-	-	-	-	-	-	G	G	G	A	T	G	G	T	G	G	A	C	G	A	T	3.64% (3215 reads)
A	A	T	G	C	A	T	T	T	G	T	C	A	A	T	G	G	A	T	-	C	C	C	T	G	G	G	G	A	T	G	G	T	G	G	A	C	G	A	T	3.55% (3130 reads)		
A	A	T	G	C	A	T	T	T	G	T	C	A	A	T	G	G	A	T	G	-	-	G	T	G	G	G	G	A	T	G	G	T	G	G	A	C	G	A	T	2.81% (2483 reads)		
A	A	T	G	C	A	T	T	T	G	T	C	A	A	T	G	G	A	T	-	-	-	-	-	G	G	G	G	A	T	G	G	T	G	G	A	C	G	A	T	2.54% (2239 reads)		
A	A	T	G	C	A	T	T	T	G	T	C	-	-	-	-	-	-	-	-	C	C	T	G	G	G	G	A	T	G	G	T	G	G	A	C	G	A	T	2.50% (2207 reads)			
A	A	T	G	C	A	T	T	T	G	T	C	A	A	T	G	G	T	C	A	-	-	A	T	G	T	C	A	A	T	G	G	T	G	G	A	C	G	A	T	2.12% (1869 reads)		
A	A	T	G	C	A	T	T	T	G	T	C	A	A	T	G	G	A	-	-	-	C	C	T	G	G	G	G	A	T	G	G	T	G	G	A	C	G	A	T	1.96% (1729 reads)		
A	A	T	G	C	A	T	T	T	G	T	C	A	A	T	G	G	-	-	-	-	-	-	-	-	-	-	-	-	-	-	-	T	G	G	A	C	G	A	T	1.91% (1685 reads)		
A	A	T	G	C	A	T	T	T	G	T	C	A	A	T	G	G	A	C	A	C	C	C	T	G	G	G	G	A	T	G	G	T	G	G	A	C	G	A	T	1.90% (1673 reads)		
A	A	T	G	C	A	T	T	T	G	T	C	A	A	T	G	G	A	T	A	A	C	C	C	T	G	G	G	G	A	T	G	G	T	G	G	A	C	G	A	T	1.77% (1563 reads)	
-	-	-	-	-	-	T	T	T	C	T	-	-	-	-	-	-	-	-	-	-	-	-	-	-	-	-	-	-	-	-	-	-	-	-	-	-	G	A	T	1.65% (1459 reads)		
A	A	T	G	C	A	T	T	T	G	-	-	-	-	-	-	-	-	-	-	-	-	-	-	-	-	G	G	G	A	T	G	G	T	G	G	A	C	G	A	T	1.62% (1429 reads)	
A	A	T	G	C	A	T	T	T	G	T	C	A	A	T	G	C	A	T	T	T	G	T	C	A	T	T	G	C	A	T	G	G	G	G	A	T	G	G	T	1.53% (1347 reads)		
T	T	G	T	C	A	A	T	G	G	A	T	G	G	T	G	G	G	G	A	T	G	G	G	G	G	A	T	G	G	T	G	G	A	C	G	A	T	1.52% (1345 reads)				
A	A	T	G	C	A	T	T	T	G	T	C	A	A	T	G	G	G	-	-	-	-	-	-	G	G	G	G	A	T	G	G	T	G	G	A	C	G	A	T	1.49% (1311 reads)		
A	A	T	G	C	A	T	T	T	G	T	C	A	A	T	G	G	A	T	A	T	C	C	C	T	G	G	G	G	A	T	G	G	T	G	G	A	C	G	A	1.42% (1254 reads)		
A	A	T	G	C	A	T	T	T	G	T	C	A	A	T	G	-	-	-	-	-	-	C	T	G	G	G	G	A	T	G	G	T	G	G	A	C	G	A	T	1.42% (1249 reads)		
A	A	T	G	C	A	T	T	T	G	T	C	A	A	T	G	G	A	T	G	G	T	G	G	A	T	G	G	G	G	A	T	G	G	T	G	G	A	C	G	1.28% (1132 reads)		
A	A	T	G	C	A	T	T	T	G	T	C	A	A	T	G	G	A	T	A	C	C	C	T	G	G	G	G	A	T	G	G	T	G	G	A	C	G	A	T	1.25% (1107 reads)		
A	A	T	G	C	A	T	T	T	G	T	C	A	A	T	G	G	A	T	A	A	A	G	T	G	T	A	A	A	G	C	C	T	G	G	G	G	A	T	G	1.20% (1060 reads)		
A	A	T	G	C	A	T	T	T	G	T	C	A	A	T	G	G	A	-	-	C	C	C	T	G	G	G	G	A	T	G	G	T	G	G	A	C	G	A	T	1.02% (896 reads)		
A	A	T	G	C	A	T	T	T	G	T	C	A	A	T	G	G	A	T	A	T	G	G	T	T	A	T	C	C	A	T	C	C	C	T	G	G	G	G	A	0.91% (807 reads)		
A	A	T	G	C	A	T	T	T	G	T	C	A	A	T	G	G	A	T	A	T	G	G	T	G	G	G	G	A	T	G	G	T	G	G	A	C	G	A	T	0.83% (730 reads)		
A	A	T	G	C	A	T	T	T	G	T	C	A	A	T	G	G	A	T	A	A	T	G	A	C	A	A	T	G	G	G	G	A	T	G	G	T	G	G	A	0.81% (715 reads)		
A	A	T	G	C	A	T	T	T	G	-	-	-	-	-	G	G	A	T	-	-	-	-	T	G	G	G	G	A	T	G	G	T	G	G	A	C	G	A	T	0.77% (679 reads)		
A	A	T	G	C	A	T	T	T	G	T	C	A	A	T	G	G	-	-	-	-	-	-	-	-	G	G	G	A	T	G	G	T	G	G	A	C	G	A	T	0.74% (650 reads)		
A	A	T	G	C	A	T	T	T	G	T	C	A	A	T	G	G	A	T	G	-	-	G	T	G	G	A	C	G	A	T												

A A T G C A T T T G T C A A T G G A T A C C C T G G G G A T G G T G G A C G A T - Reference																													
OIRx2																													
A A T G C A T T T G T C A A T G G -																													

A A T G C A T T T G T C A A T G G A T A C C C T G G G G A T G G T G G A C G A T - Reference																																									
OIRx2																																									
A	A	T	G	C	A	T	T	T	G	T	C	A	A	T	G	G	A	T	A	C	C	C	T	G	G	G	G	A	T	G	G	T	G	G	A	C	G	A	T	- 75.55% (57679 reads)	
A	A	T	G	C	A	T	T	T	G	T	C	A	A	T	G	G	-	-	-	-	-	-	-	-	G	G	A	T	G	G	T	G	G	A	C	G	A	T	- 4.68% (3573 reads)		
A	A	T	G	C	A	T	T	T	G	T	C	A	A	T	G	G	A	T	-	-	-	-	-	-	-	-	-	-	G	G	T	G	G	A	C	G	A	T	- 1.56% (1190 reads)		
A	A	T	G	C	A	T	T	T	G	T	C	A	A	T	G	G	A	T	A	-	-	C	T	G	G	G	G	A	T	G	G	T	G	G	A	C	G	A	T	- 1.09% (833 reads)	
A	A	T	G	C	A	T	T	T	G	T	C	A	A	T	G	G	A	T	-	-	-	-	-	G	G	G	G	A	T	G	G	T	G	G	A	C	G	A	T	- 1.05% (799 reads)	
A	A	T	G	C	A	T	T	T	G	T	C	A	A	T	G	G	A	T	A	-	-	-	-	G	G	G	G	A	T	G	G	T	G	G	A	C	G	A	T	- 0.62% (475 reads)	
A	A	T	G	C	A	T	T	T	G	T	C	A	A	T	G	G	A	T	A	-	G	C	T	G	G	G	G	A	T	G	G	T	G	G	A	C	G	A	T	- 0.52% (396 reads)	
A	A	T	G	C	A	T	T	T	G	T	C	A	A	T	G	G	A	-	-	-	-	-	-	-	-	G	A	T	G	G	T	G	G	A	C	G	A	T	- 0.44% (338 reads)		
A	A	T	G	C	A	T	T	T	G	T	C	A	A	T	G	G	A	T	A	T	C	C	C	T	G	G	G	G	A	T	G	G	T	G	G	A	C	G	A	T	- 0.43% (327 reads)
A	A	T	G	C	A	T	T	T	G	T	C	A	A	T	G	G	A	T	A	-	-	-	-	-	G	G	G	A	T	G	G	T	G	G	A	C	G	A	T	- 0.34% (256 reads)	
A	A	T	G	C	A	T	T	T	G	T	C	A	A	T	G	G	A	-	-	C	C	C	T	G	G	G	G	A	T	G	G	T	G	G	A	C	G	A	T	- 0.33% (252 reads)	
A	A	T	G	C	A	T	T	T	G	T	C	A	A	T	G	G	A	-	-	C	C	C	T	G	G	G	G	A	T	G	G	T	G	G	A	C	G	A	T	- 0.31% (236 reads)	
A	A	T	G	C	A	T	T	T	G	T	C	A	A	T	G	G	A	T	A	C	C	C	C	T	G	G	G	G	A	T	G	G	T	G	G	A	C	G	A	T	- 0.31% (233 reads)
A	A	T	G	C	A	T	T	T	G	T	C	A	A	T	G	G	A	T	A	-	-	-	-	-	-	-	-	-	-	G	T	G	G	A	C	G	A	T	- 0.30% (231 reads)		
A	A	T	G	C	A	T	T	T	G	T	C	A	A	T	G	G	A	T	A	-	C	C	T	G	G	G	G	A	T	G	G	T	G	G	A	C	G	A	T	- 0.29% (225 reads)	
A	A	T	G	C	A	T	T	T	G	T	C	A	A	T	G	G	A	T	A	-	-	G	T	G	G	G	G	A	T	G	G	T	G	G	A	C	G	A	T	- 0.29% (222 reads)	
A	A	T	G	C	A	T	T	T	G	T	C	A	A	T	G	G	A	T	-	C	C	C	T	G	G	G	G	A	T	G	G	T	G	G	A	C	G	A	T	- 0.28% (215 reads)	
A	A	T	G	C	A	T	T	T	G	T	C	A	A	T	G	G	A	T	A	-	-	-	T	G	G	G	G	A	T	G	G	T	G	G	A	C	G	A	T	- 0.25% (194 reads)	
A	A	T	G	C	A	T	T	T	G	T	C	A	A	T	G	G	A	T	G	-	-	G	T	G	G	G	G	A	T	G	G	T	G	G	A	C	G	A	T	- 0.24% (182 reads)	
A	A	T	G	C	A	T	T	T	G	T	C	A	A	T	C	C	-	-	-	C	C	C	T	G	G	G	G	A	T	G	G	T	G	G	A	C	G	A	T	- 0.22% (166 reads)	
A	A	T	G	C	A	T	T	T	G	T	C	A	A	T	G	C	A	T	T	T	G	A	C	A	A	A	T	G	C	A	T	T	G	T	C	T	G	G	G	- 0.20% (154 reads)	

bold

Substitutions

Insertions

-

Deletions

Predicted cleavage position

A A T G C A T T T G T C A A T G G A T A C C C T G G G G A T G G T G G A C G A T - Reference

OIRx2

A	A	T	G	C	A	T	T	T	G	T	C	A	A	T	G	G	A	T	A	C	C	C	T	G	G	G	G	A	T	G	G	T	G	G	A	C	G	A	T	-	78.65% (51126 reads)
A	A	T	G	C	A	T	T	T	G	T	C	A	A	T	G	G	-	-	-	-	-	-	-	-	G	G	A	T	G	G	T	G	G	A	C	G	A	T	-	3.04% (1974 reads)	
A	A	T	G	C	A	T	T	T	G	T	C	A	A	T	G	G	A	T	A	T	C	C	C	C	T	G	G	G	G	A	T	G	G	T	G	G	A	C	G	-	1.76% (1143 reads)
A	A	T	G	C	A	T	T	T	G	T	C	A	A	T	G	G	A	T	-	-	-	-	-	-	-	-	-	-	G	G	T	G	G	A	C	G	A	T	-	1.55% (1009 reads)	
A	A	T	G	C	A	T	T	T	G	T	C	A	A	T	G	G	A	T	-	-	-	-	-	G	G	G	G	A	T	G	G	T	G	G	A	C	G	A	T	-	0.87% (564 reads)
A	A	T	G	C	A	T	T	T	G	T	C	A	A	T	G	G	A	T	A	-	-	C	T	G	G	G	G	A	T	G	G	T	G	G	A	C	G	A	T	-	0.82% (535 reads)
A	A	T	G	C	A	T	T	T	G	T	C	A	A	T	G	G	A	T	A	-	G	C	T	G	G	G	G	A	T	G	G	T	G	G	A	C	G	A	T	-	0.44% (285 reads)
A	A	T	G	C	A	T	T	T	G	T	C	A	A	T	-	-	-	-	-	-	C	C	T	G	G	G	G	A	T	G	G	T	G	G	A	C	G	A	T	-	0.42% (270 reads)
A	A	T	G	C	A	T	T	T	G	T	C	A	A	T	G	G	A	T	-	C	C	C	T	G	G	G	G	A	T	G	G	T	G	G	A	C	G	A	T	-	0.42% (270 reads)
A	A	T	G	C	A	T	T	T	G	T	C	A	A	T	G	G	A	T	A	-	-	-	-	G	G	G	G	A	T	G	G	T	G	G	A	C	G	A	T	-	0.39% (251 reads)
A	A	T	G	C	A	T	T	T	G	T	C	A	A	T	G	G	A	T	G	-	-	G	T	G	G	G	G	A	T	G	G	T	G	G	A	C	G	A	T	-	0.33% (212 reads)
A	A	T	G	C	A	T	T	T	G	T	C	A	A	T	G	G	A	T	A	-	-	-	G	G	G	G	G	A	T	G	G	T	G	G	A	C	G	A	T	-	0.28% (180 reads)
A	A	T	G	C	A	T	T	T	G	T	C	A	A	T	G	G	A	T	A	C	C	C	C	T	G	G	G	G	A	T	G	G	T	G	G	A	C	G	A	-	0.26% (172 reads)
A	A	T	G	C	A	T	T	T	G	T	C	A	A	T	G	G	A	T	A	-	-	-	T	G	G	G	G	A	T	G	G	T	G	G	A	C	G	A	T	-	0.25% (160 reads)
A	A	T	G	C	A	T	T	T	G	T	C	A	A	T	G	G	A	T	A	-	-	-	-	-	G	G	G	A	T	G	G	T	G	G	A	C	G	A	T	-	0.24% (155 reads)
A	A	T	G	C	A	T	T	T	G	T	C	A	A	T	G	G	A	T	A	-	C	C	T	G	G	G	G	A	T	G	G	T	G	G	A	C	G	A	T	-	0.22% (143 reads)
A	A	T	G	C	A	T	T	T	G	T	C	A	A	T	G	G	A	T	A	-	-	G	T	G	G	G	G	A	T	G	G	T	G	G	A	C	G	A	T	-	0.20% (132 reads)

bold

Substitutions

Insertions

-

Deletions

Predicted cleavage position

A A T G C A T T T G T C A A T G G A T A C C C T G G G G A T G G T G G A C G A T - Reference																																									
OIRx2																																									
A	A	T	G	C	A	T	T	T	G	T	C	A	A	T	G	G	A	T	A	C	C	C	T	G	G	G	G	A	T	G	G	T	G	G	A	C	G	A	T	- 78.79% (65230 reads)	
A	A	T	G	C	A	T	T	T	G	T	C	A	A	T	G	G	-	-	-	-	-	-	-	-	G	G	A	T	G	G	T	G	G	A	C	G	A	T	- 3.21% (2658 reads)		
A	A	T	G	C	A	T	T	T	G	T	C	A	A	T	G	G	A	T	-	-	-	-	-	-	-	-	-	-	G	G	T	G	G	A	C	G	A	T	- 1.92% (1591 reads)		
A	A	T	G	C	A	T	T	T	G	T	C	A	A	T	G	G	A	T	A	-	-	C	T	G	G	G	G	A	T	G	G	T	G	G	A	C	G	A	T	- 1.15% (952 reads)	
A	A	T	G	C	A	T	T	T	G	T	C	A	A	T	G	G	A	T	-	-	-	-	-	G	G	G	G	A	T	G	G	T	G	G	A	C	G	A	T	- 0.63% (523 reads)	
A	A	T	G	C	A	T	T	T	G	T	C	A	A	T	G	G	A	T	A	-	G	C	T	G	G	G	G	A	T	G	G	T	G	G	A	C	G	A	T	- 0.50% (410 reads)	
A	A	T	G	C	A	T	T	T	G	T	C	A	A	T	G	G	A	T	A	-	-	-	T	G	G	G	G	A	T	G	G	T	G	G	A	C	G	A	T	- 0.49% (406 reads)	
A	A	T	G	C	A	T	T	T	G	T	C	A	A	T	G	G	A	T	A	-	-	-	-	G	G	G	G	A	T	G	G	T	G	G	A	C	G	A	T	- 0.43% (352 reads)	
A	A	T	G	C	A	T	T	T	G	T	C	A	A	T	G	G	A	T	A	A T T G A C A C C A T										C	C	C	T	G	G	G	G	A	- 0.33% (272 reads)		
A	A	T	G	C	A	T	T	T	G	T	C	A	A	T	G	G	A	T	A	-	C	C	T	G	G	G	G	A	T	G	G	T	G	G	A	C	G	A	T	- 0.29% (237 reads)	
A	A	T	G	C	A	T	T	T	G	T	C	A	A	T	G	G	A	T	A	-	-	G	T	G	G	G	G	A	T	G	G	T	G	G	A	C	G	A	T	- 0.26% (218 reads)	
A	A	T	G	C	A	T	T	T	G	T	C	A	A	T	G	G	A	T	G	-	G	T	G	G	G	G	G	A	T	G	G	T	G	G	A	C	G	A	T	- 0.25% (209 reads)	
A	A	T	G	C	A	T	T	T	G	T	C	A	A	T	G	G	A	T	A	-	-	-	-	-	G	G	G	A	T	G	G	T	G	G	A	C	G	A	T	- 0.25% (204 reads)	
A	A	T	G	C	A	T	T	T	G	T	C	A	A	T	G	G	A	T	-	C	C	C	T	G	G	G	G	A	T	G	G	T	G	G	A	C	G	A	T	- 0.22% (180 reads)	
A	A	T	G	C	A	T	T	T	G	T	C	A	A	T	G	G	A	T	G	G A T			G	G	A	T	G	G	G	G	A	T	G	G	T	G	G	A	C	- 0.21% (176 reads)	
A	A	T	G	C	A	T	T	T	G	T	C	A	A	T	G	G	A	T	A	T	C	C	C	T	G	G	G	G	A	T	G	G	T	G	G	A	C	G	A	- 0.20% (167 reads)	
A	A	T	G	C	A	T	T	T	G	T	C	A	A	T	G	C	A	T	T	T	G	C	C	T	G	G	G	G	A	T	G	G	T	G	G	A	C	G	A	- 0.20% (166 reads)	

bold

Substitutions

Insertions

-

Deletions


Predicted cleavage position

A A T G C A T T T G T C A A T G G A T A C C C T G G G G A T G G T G G A C G A T - Reference

OIRx2 

A A T G C A T T T G T C A A T G G A T A C C C T G G G G A T G G T G G A C G A T - 98.82% (72872 reads)

bold



-

Substitutions

Insertions

Deletions

Predicted cleavage position


uninjected pool1 *OIRx2*

A A T G C A T T T G T C A A T G G A T A C C C T G G G G A T G G T G G A C G A T - Reference

OIRx2 

A A T G C A T T T G T C A A T G G A T A | C C C T G G G G A T G G T G G A C G A T - 98.95% (72676 reads)

bold



-

Substitutions

Insertions

Deletions

Predicted cleavage position


uninjected pool2 *OIRx2*

A A T G C A T T T G T C A A T G G A T A C C C T G G G G A T G G T G G A C G A T - Reference

OIRx2 

A A T G C A T T T G T C A A T G G A T A | C C C T G G G G A T G G T G G A C G A T - 98.74% (82153 reads)

bold



-

Substitutions

Insertions

Deletions

Predicted cleavage position

uninjected pool3 *OIRx2*

C	T	G	C	T	C	C	C	T	G	T	C	T	G	C	C	G	A	T	G	G	A	C	T	G	C	T	G	A	C	C	C	T	G	A	C	C	G	G	G	-	Reference	
OICryaa																																										
C	T	G	C	T	C	C	C	T	G	T	C	T	G	C	C	G	A	-	-	-	-	-	C	T	G	C	T	G	A	C	C	C	T	G	A	C	C	G	G	G	-	25.57% (16273 reads)
C	T	G	C	T	C	C	C	T	G	T	C	T	G	C	C	G	A	T	G	-	-	-	-	-	C	T	G	A	C	C	C	T	G	A	C	C	G	G	G	-	13.58% (8639 reads)	
C	T	G	C	T	C	C	C	T	G	T	C	T	G	C	-	-	-	-	-	-	-	-	-	-	T	G	A	C	C	C	T	G	A	C	C	G	G	G	-	5.73% (3649 reads)		
C	T	G	C	T	C	C	C	T	G	T	C	T	G	C	C	G	A	T	G	C	T	G	A	C	T	G	A	C	C	C	T	G	A	C	C	G	-	5.00% (3179 reads)				
C	T	G	C	T	C	C	C	T	G	T	C	T	G	C	C	G	A	C	C	G	A	C	T	G	C	T	G	A	C	C	C	T	G	A	C	C	G	G	G	-	4.78% (3041 reads)	
C	T	G	C	T	C	C	C	T	G	T	C	T	G	T	C	T	A	T	T	-	A	T	T	C	T	T	G	A	C	C	C	T	G	A	C	C	G	G	G	-	3.57% (2270 reads)	
C	T	G	C	T	C	C	C	T	G	-	-	-	-	-	-	-	-	-	-	-	A	C	T	G	C	T	G	A	C	C	C	T	G	A	C	C	G	G	G	-	3.51% (2235 reads)	
C	T	G	C	T	C	C	C	T	G	T	C	T	G	C	C	G	A	-	-	-	-	-	-	-	-	-	-	-	-	-	-	-	-	-	-	-	-	-	-	3.41% (2171 reads)		
C	T	G	C	T	C	C	C	T	G	T	C	T	G	C	C	G	A	T	G	-	-	-	-	-	-	-	-	-	-	-	-	-	-	A	C	C	G	G	G	-	2.90% (1845 reads)	
C	T	G	C	T	C	C	C	T	G	T	C	T	G	C	C	G	A	T	G	A	C	T	G	A	C	T	G	C	T	G	A	C	C	C	T	G	A	C	C	-	2.22% (1415 reads)	
C	T	G	C	T	C	C	C	T	G	T	C	T	T	C	A	-	A	T	G	A	T	T	T	G	T	G	A	T	C	C	T	C	A	C	T	G	G	T	G	-	2.11% (1340 reads)	
C	-	-	-	-	-	-	-	-	-	-	-	-	-	-	-	-	-	-	-	-	-	-	-	-	-	-	-	-	-	-	-	-	-	-	-	-	-	-	-	2.09% (1332 reads)		
C	T	G	C	T	C	C	C	T	G	T	C	T	G	-	-	-	-	-	-	-	-	-	-	-	-	-	-	-	-	-	-	-	A	C	C	G	G	G	-	2.08% (1323 reads)		
T	G	C	T	G	C	C	C	T	G	T	C	T	G	C	C	G	A	T	G	C	C	G	A	C	T	G	C	T	G	A	C	C	C	T	G	A	C	C	G	-	1.91% (1215 reads)	
C	T	G	C	T	C	C	C	T	G	T	C	T	G	C	C	G	A	-	-	-	-	-	-	-	-	-	-	-	C	C	C	T	G	A	C	C	G	G	G	-	1.68% (1070 reads)	
C	T	G	C	T	C	C	C	T	G	T	C	T	G	C	C	C	-	-	-	G	A	C	T	G	C	T	G	A	C	C	C	T	G	A	C	C	G	G	G	-	1.50% (955 reads)	
C	T	G	C	T	C	C	C	T	G	T	C	T	G	C	C	G	A	T	C	C	C	T	G	A	C	T	G	C	T	G	A	C	C	C	T	G	A	C	C	-	1.48% (942 reads)	
C	T	G	C	T	C	C	C	T	G	T	C	T	G	C	C	G	A	T	G	-	-	-	-	-	-	-	-	A	C	C	C	T	G	A	C	C	G	G	G	-	1.43% (910 reads)	
C	T	G	C	T	C	C	C	T	G	T	C	T	G	C	C	G	A	T	G	G	C	C	T	T	C	T	T	G	A	C	T	G	C	T	G	A	C	C	C	-	1.39% (887 reads)	
C	T	G	C	T	C	C	C	T	G	T	C	T	G	C	C	G	A	T	G	C	C	T	G	T	C	T	G	A	C	C	C	T	G	A	C	C	G	G	G	-	1.32% (839 reads)	
C	T	G	C	T	C	C	C	T	G	T	C	T	G	G	C	-	-	-	-	-	-	-	-	-	-	-	-	-	C	C	T	G	A	C	C	G	G	G	-	1.28% (812 reads)		
C	T	G	C	T	C	C	C	T	G	T	C	T	G	C	C	G	A	T	G	C	T	A	G	G	G	C	C	T	T	T	G	G	C	C	C	T	G	A	C	-	1.26% (801 reads)	
C	T	G	C	T	C	C	C	T	G	T	C	T	G	C	C	G	A	-	-	-	-	-	-	-	-	-	-	-	-	-	-	-	-	-	-	-	-	-	-	-	1.02% (651 reads)	
C	T	G	C	T	C	C	C	T	G	T	C	T	G	C	C	G	A	T	G	-	A	C	T	G	C	T	G	A	C	C	C	T	G	A	C	C	G	G	G	-	0.97% (616 reads)	
C	T	G	C	T	C	C	C	T	G	T	C	T	G	C	C	G	T	-	-	-	-	C	T	G	C	T	G	A	C	C	C	T	G	A	C	C	G	G	G	-	0.95% (606 reads)	
C	T	G	C	T	C	C	C	T	G	T	C	T	G	-	-	-	-	-	-	-	-	-	-	-	-	-	-	A	C	C	C	T	G	A	C	C	G	G	G	-	0.90% (575 reads)	
C	T	G	C	T	C	C	C	T	G	T	C	T	G	-	-	-	-	-	-	-	A	C	T	G	C	T	G	A	C	C	C	T	G	A	C	C	G	G	G	-	0.86% (547 reads)	
C	T	G	C	T	C	C	C	T	G	T	C	T	G	C	C	G	A	T	G	A	C	C	C	T	G	C	T	G	A	C	C	C	T	G	A	C	C	G	G	-	0.82% (519 reads)	
C	T	G	C	T	C	C	C	T	G	-	-	-	-	-	-	-	-	-	-	-	-	-	-	-	-	C	T	G	A	C	C	C	T	G	A	C	C	G	G	G	-	0.70% (447 reads)
-	-	-	-	-	-	-	-	-	-	-	-	-	-	-	-	-	-	-	-	G	A	C	T	G	C	T	G	A	C	C	C	T	G	A	C	C	G	G	G	-	0.69% (439 reads)	
C	T	G	C	T	C	C	C	T	G	T	C	T	G	C	C	G	A	T	G	A	C	A	G	G	A	G	C	A	G	G	T	G	A	T	G	G	C	C	-	0.55% (350 reads)		
-	-	-	-	-	-	-	-	-	-	-	-	-	-	-	-	-	-	-	-	-	-	-	-	-	-	-	-	-	-	-	-	-	-	-	-	-	-	-	-	0.46% (292 reads)		
-	-	-	-	-	-	-	-	-	-	-	-	-	-	-	-	-	-	-	-	-	-	-	-	-	-	C	T	G	A	C	C	C	T	G	A	C	C	G	G	G	-	0.25% (161 reads)
C	T	G	C	T	C	C	C	-	-	-	-	-	-	-	-	-	-	-	-	-	-	-	-	-	-	-	-	-	-	-	-	-	-	-	-	-	-	-	-	-	0.21% (135 reads)	

bold Substitutions

Insertions

- Deletions

----- Predicted cleavage position

C	T	G	C	T	C	C	C	T	G	T	C	T	G	C	C	G	A	T	G	G	A	C	T	G	C	T	G	A	C	C	C	T	G	A	C	C	G	G	G	-	Reference	
<i>OICryaa</i>																																										
C	T	G	C	T	C	C	C	T	G	T	C	T	G	C	C	G	A	-	-	-	-	C	T	G	C	T	G	A	C	C	C	T	G	A	C	C	G	G	G	-	22.57% (15256 reads)	
C	T	G	C	T	C	C	C	T	G	T	C	T	G	C	-	-	-	-	-	-	-	-	-	-	T	G	A	C	C	C	T	G	A	C	C	G	G	G	-	15.22% (10292 reads)		
C	T	G	C	T	C	C	C	T	G	T	C	T	G	C	C	G	A	T	G	-	A	C	T	G	C	T	G	A	C	C	C	T	G	A	C	C	G	G	G	-	9.59% (6482 reads)	
C	T	G	C	T	C	C	C	T	G	T	C	T	G	C	C	G	A	T	G	-	-	-	-	-	-	-	-	-	-	-	-	-	-	-	-	-	-	-	-	-	8.22% (5555 reads)	
C	T	G	C	T	C	C	C	T	G	T	C	T	G	C	C	G	A	T	G	-	-	-	-	-	C	T	G	A	C	C	C	T	G	A	C	C	G	G	G	-	5.99% (4047 reads)	
C	T	G	C	T	C	C	C	T	G	T	C	T	G	C	C	G	A	T	G	-	-	C	T	G	C	T	G	A	C	C	C	T	G	A	C	C	G	G	G	-	4.38% (2961 reads)	
C	T	G	C	T	C	C	C	T	G	T	C	T	G	C	C	G	A	-	-	-	-	-	-	-	-	-	-	C	C	C	T	G	A	C	C	G	G	G	-	4.08% (2757 reads)		
C	T	G	C	T	C	C	C	T	G	T	C	T	G	C	C	-	-	T	G	-	-	C	T	T	T	T	G	A	C	C	C	T	G	A	C	C	G	G	G	-	4.08% (2757 reads)	
C	T	C	C	C	T	G	T	C	T	G	C	C	G	A	T	C	A	G	G	G	T	C	T	G	C	T	G	A	C	C	C	T	G	A	C	C	G	G	G	-	2.91% (1970 reads)	
G	C	C	A	T	C	A	C	C	T	G	C	T	C	C	C	-	-	-	-	-	-	-	-	T	G	C	T	G	A	C	C	C	T	G	A	C	C	G	G	G	-	2.55% (1724 reads)
C	T	G	C	T	C	C	C	T	G	T	C	T	G	-	-	-	-	-	-	-	A	C	T	G	C	T	G	A	C	C	C	T	G	A	C	C	G	G	G	-	2.52% (1701 reads)	
C	T	G	C	T	C	C	C	T	G	T	C	T	G	C	C	G	A	T	G	A	G	T	T	T	C	G	A	G	A	C	T	G	C	T	G	A	C	C	C	-	2.36% (1598 reads)	
-	-	-	-	-	-	-	-	-	-	-	-	-	-	-	-	-	-	-	-	-	A	C	T	G	C	T	G	A	C	C	C	T	G	A	C	C	G	G	G	-	1.95% (1315 reads)	
-	-	-	C	T	C	C	C	-	-	-	-	-	-	-	-	-	-	-	-	-	-	C	T	G	C	T	G	A	C	C	C	T	G	A	C	C	G	G	G	-	1.65% (1113 reads)	
C	T	G	C	T	C	C	C	T	G	T	C	T	G	C	T	G	A	C	C	C	T	G	A	C	C	C	T	G	A	T	G	C	C	A	C	C	T	G	C	-	1.54% (1042 reads)	
C	T	G	C	T	C	C	C	T	G	T	A	T	G	C	C	G	A	-	-	-	-	C	T	G	C	T	G	A	C	C	C	T	G	A	C	C	G	G	G	-	1.51% (1019 reads)	
C	T	G	C	T	C	C	C	T	G	T	C	T	G	C	C	-	-	-	-	-	-	-	-	-	-	-	-	-	C	C	T	G	A	C	C	G	G	G	-	1.15% (777 reads)		
C	T	G	C	T	C	C	C	T	G	T	C	T	G	C	C	G	A	T	G	C	T	G	A	C	T	G	C	T	G	A	C	C	C	T	G	A	C	C	G	-	1.03% (693 reads)	
C	T	G	C	T	C	C	C	T	G	T	C	T	G	C	C	G	A	T	G	C	C	C	C	T	G	A	C	C	G	G	G	C	C	A	T	G	A	C	-	0.90% (606 reads)		
C	T	G	C	T	C	C	C	T	G	T	C	T	G	C	C	T	-	-	-	-	G	A	C	T	G	C	T	G	A	C	C	C	T	G	A	C	C	G	G	G	-	0.84% (565 reads)
C	T	G	C	T	C	C	C	T	G	T	C	T	G	C	C	G	A	T	G	T	C	T	G	T	C	A	G	A	C	T	G	C	T	G	A	C	C	C	T	-	0.72% (486 reads)	
C	T	G	C	T	C	C	C	T	G	T	C	T	G	C	C	G	A	T	G	T	T	C	T	G	C	C	G	A	C	T	G	C	T	G	A	C	C	C	T	-	0.41% (274 reads)	
C	T	G	C	T	C	C	C	T	G	T	C	T	G	C	C	G	-	-	-	-	-	C	T	G	C	T	G	A	C	C	C	T	G	A	C	C	G	G	G	-	0.38% (256 reads)	
C	T	G	C	T	C	C	C	T	G	T	C	T	G	C	C	G	A	C	C	C	T	G	A	C	T	G	G	T	C	A	T	A	G	C	T	G	C	A	A	-	0.35% (235 reads)	
C	T	G	C	T	C	C	C	T	G	T	C	T	G	C	C	G	A	T	G	-	-	-	-	-	-	-	-	-	-	-	-	-	A	C	C	G	G	G	-	0.33% (222 reads)		
C	T	G	C	T	C	C	C	T	G	T	C	T	G	C	C	G	A	T	G	C	T	G	C	T	G	A	C	T	G	C	T	G	A	C	C	C	T	G	A	-	0.31% (212 reads)	
-	-	-	-	-	-	-	-	-	-	-	-	T	G	C	A	G	A	-	-	-	-	C	T	G	C	T	G	-	-	-	-	-	-	-	-	-	-	-	G	G	-	0.25% (172 reads)
C	T	G	C	T	C	C	C	T	G	T	C	T	G	C	C	G	A	T	-	-	-	-	T	G	C	T	G	A	C	C	C	T	G	A	C	C	G	G	G	-	0.24% (161 reads)	
C	T	G	C	T	C	C	C	T	G	T	C	T	G	C	C	G	A	T	G	-	-	-	-	-	-	-	-	A	C	C	C	T	G	A	C	C	G	G	G	-	0.23% (157 reads)	
C	T	G	C	T	C	C	C	T	G	T	C	T	G	C	C	G	A	T	G	C	T	G	A	C	C	-	C	T	G	A	C	C	C	T	G	A	C	C	G	-	0.21% (139 reads)	

bold Substitutions

Insertions

- Deletions

----- Predicted cleavage position

C	T	G	C	T	C	C	C	T	G	T	C	T	G	C	C	G	A	T	G	G	A	C	T	G	C	T	G	A	C	C	C	T	G	A	C	C	G	G	G	-	Reference	
<i>OICryaa</i>																																										
C	T	G	C	T	C	C	C	T	G	T	C	T	G	C	C	G	A	-	-	-	-	C	T	G	C	T	G	A	C	C	C	T	G	A	C	C	G	G	G	-	20.77% (14376 reads)	
C	T	G	C	T	C	C	C	T	G	T	C	T	G	C	-	-	-	-	-	-	-	-	-	-	-	T	G	A	C	C	C	T	G	A	C	C	G	G	G	-	15.62% (10813 reads)	
C	T	G	C	T	C	C	C	T	G	T	C	T	G	C	C	G	A	T	G	-	-	-	-	-	C	T	G	A	C	C	C	T	G	A	C	C	G	G	G	-	12.84% (8889 reads)	
C	T	G	C	T	C	C	C	T	G	-	-	-	-	-	-	-	-	-	-	-	A	C	T	G	C	T	G	A	C	C	C	T	G	A	C	C	G	G	G	-	10.36% (7169 reads)	
C	T	G	C	T	C	C	C	T	G	T	C	T	G	C	C	G	A	T	G	-	A	C	T	G	C	T	G	A	C	C	C	T	G	A	C	C	G	G	G	-	6.03% (4172 reads)	
C	T	G	C	T	C	C	C	T	G	T	C	T	A	C	C	G	G	T	C	C	C	T	G	T	C	T	G	T	C	C	G	T	A	T	T	C	G	G	-	3.84% (2658 reads)		
C	T	G	C	T	C	C	C	T	G	A	-	T	G	C	C	G	A	T	G	-	A	C	T	G	C	T	G	A	C	C	C	T	G	A	C	C	G	G	G	-	2.96% (2048 reads)	
C	T	G	C	T	C	C	C	T	G	T	C	T	G	C	C	G	A	T	G		C	T	G	A	C	C	C	T	G	A	C	C	G	G	G	-	2.94% (2037 reads)					
-	-	-	-	-	-	-	-	-	-	-	-	-	-	-	-	-	-	-	-	G	A	C	T	G	C	T	G	A	C	C	C	T	G	A	C	C	G	G	G	-	1.89% (1310 reads)	
C	T	G	C	T	C	C	C	T	G	-	-	-	-	-	-	-	-	-	-	-	-	-	-	C	T	G	A	C	C	C	T	G	A	C	C	G	G	G	-	1.87% (1293 reads)		
C	T	G	C	T	C	C	C	T	G	T	C	T	G	C	C	G	A	T	G		A	C	A	G	G	G	A	G	C	T	G	G	C	C	T	T	T	G	G	C	-	1.77% (1222 reads)
C	T	G	C	T	C	C	C	T	G	T	C	T	G	C	C	G	-	-	-	-	-	-	-	-	-	-	-	-	-	-	-	-	-	-	-	-	-	-	G	G	-	1.74% (1205 reads)
C	T	G	C	T	C	C	C	T	G	T	C	T	G	-	-	-	-	-	-	-	A	C	T	G	C	T	G	A	C	C	C	T	G	A	C	C	G	G	G	-	1.66% (1150 reads)	
C	T	G	C	T	C	C	C	T	G	T	C	T	G	C	C	G	A	T	G	-	-	C	T	G	C	T	G	A	C	C	C	T	G	A	C	C	G	G	G	-	1.61% (1115 reads)	
C	T	G	C	T	C	C	C	T	G	T	C	T	G	C	C	G	A	T	G	G	G	A	-	G	C	T	G	A	C	C	C	T	G	A	C	C	G	G	G	-	1.40% (969 reads)	
C	T	G	C	T	C	C	C	T	G	T	C	T	G	G	A	G	G	T	C	A	G	C	-	-	-	-	-	-	-	-	-	-	-	-	-	-	-	-	-	-	1.39% (964 reads)	
C	T	G	C	T	C	C	C	T	G	T	C	T	G	C	C	G	A	T	G		C	A	C	T	C	A	C	T	G	C	T	G	A	C	C	C	T	G	A	C	-	1.29% (891 reads)
C	T	G	C	T	C	C	C	T	G	T	C	T	G	C	C	G	A	T	G		T	C	T	G	C	C	G	A	C	T	G	C	T	G	A	C	C	C	T	G	-	1.22% (844 reads)
T	G	C	T	C	C	C	T	G	T	C	A	T	G	C	C	G	A	-	-	-	-	C	T	G	C	T	G	A	C	C	C	T	G	A	C	C	G	G	G	-	1.18% (818 reads)	
C	T	G	C	T	C	C	C	T	G	T	C	T	G	C	C	G	A	T	G	-	-	-	-	-	-	-	A	C	C	C	T	G	A	C	C	G	G	G	-	0.97% (670 reads)		
C	T	G	C	T	C	C	C	T	G	T	C	T	G	C	C	-	-	-	-	-	-	-	C	T	G	C	T	G	A	C	C	C	T	G	A	C	C	G	G	G	-	0.91% (627 reads)
C	T	G	C	T	C	C	C	T	G	-	-	-	-	-	-	-	-	-	-	-	-	-	-	-	-	-	-	-	-	-	-	-	A	C	C	G	G	G	-	0.74% (509 reads)		
C	T	G	C	T	C	C	C	T	G	T	C	T	G	C	C	G	A	T	G		A	C	T	G	A	C	C	C	T	G	C	T	G	A	C	C	C	T	G	A	-	0.59% (406 reads)
C	T	G	C	T	C	C	C	T	G	T	C	T	G	C	C	G	A	T	T	G		C	T	T	T	T	C	G	T	C	A	C	T	G	C	T	G	A	C	C	-	0.56% (385 reads)
C	T	G	C	T	C	C	C	T	G	T	C	T	G	-	-	-	-	-	-	-	-	-	-	-	-	-	-	-	-	-	-	-	A	C	C	G	G	G	-	0.50% (348 reads)		
C	T	G	C	T	C	C	C	T	G	T	C	T	G	C	C	G	A	T	G		G	G	A	C	T	G	C	T	G	A	C	C	C	T	G	A	C	C	G	G	-	0.46% (317 reads)
C	T	G	C	T	C	C	C	T	G	T	C	T	G	C	C	G	A	T	G	-	T	C	T	G	C	T	G	A	C	C	C	T	G	A	C	C	G	G	G	-	0.33% (228 reads)	
C	T	G	C	T	C	C	C	T	G	C	T	-	-	-	-	-	-	-	-	-	-	-	-	-	-	-	-	-	C	C	T	G	A	C	C	G	G	G	-	0.24% (169 reads)		
C	T	G	C	T	C	C	C	T	G	T	C	G	C	A	T	T	A	T	T		C	C	C	T	G	T	C	C	G	A	C	T	G	A	C	C	C	-	0.21% (142 reads)			

bold
Substitutions

Insertions

-
Deletions

Predicted cleavage position

C	T	G	C	T	C	C	C	T	G	T	C	T	G	C	C	G	A	T	G	G	A	C	T	G	C	T	G	A	C	C	C	T	G	A	C	C	G	G	G	-	Reference		
OICryaa																																											
C	T	G	C	T	C	C	C	T	G	T	C	T	G	C	C	G	A	-	-	-	-	C	T	G	C	T	G	A	C	C	C	T	G	A	C	C	G	G	G	-	35.88% (25701 reads)		
C	T	G	C	T	C	C	C	T	G	T	C	T	G	C	C	G	A	T	G	G	A	C	T	G	C	T	G	A	C	C	C	T	G	A	C	C	G	G	G	-	8.85% (6339 reads)		
C	T	G	C	T	C	C	C	T	G	T	C	T	G	C	C	G	A	T	G	-	-	-	-	-	-	C	T	G	A	C	C	C	T	G	A	C	C	G	G	G	-	8.77% (6282 reads)	
C	T	G	C	T	C	C	C	T	G	T	C	T	G	C	-	-	-	-	-	-	-	-	-	-	T	G	A	C	C	C	T	G	A	C	C	G	G	G	-	3.54% (2539 reads)			
C	T	G	C	T	C	C	C	T	G	T	C	T	G	C	C	G	A	T	G	-	A	C	T	G	C	T	G	A	C	C	C	T	G	A	C	C	G	G	G	-	2.63% (1884 reads)		
C	T	G	C	T	C	C	C	T	G	T	C	T	G	C	C	G	A	T	G	C	T	G	A	C	T	G	A	C	C	C	C	T	G	A	C	C	G	-	2.61% (1866 reads)				
C	T	G	C	T	C	C	C	T	G	T	C	T	G	C	C	G	A	T	G	C	C	G	A	T	G	C	T	G	A	C	C	C	T	G	A	C	C	G	-	2.36% (1688 reads)			
C	T	G	C	T	C	C	C	T	G	T	C	T	G	C	C	T	G	-	-	-	-	C	T	G	C	T	G	A	C	C	C	T	G	A	C	C	G	G	G	-	2.22% (1592 reads)		
C	T	G	C	T	C	C	C	T	G	-	-	-	-	-	-	-	-	-	-	-	A	C	T	G	C	T	G	A	C	C	C	T	G	A	C	C	G	G	G	-	1.83% (1308 reads)		
C	T	G	C	T	C	C	C	T	G	T	C	T	G	C	C	G	A	T	G	-	-	-	-	-	-	-	A	C	C	C	T	G	A	C	C	G	G	G	-	1.75% (1254 reads)			
C	T	G	C	T	C	C	C	T	G	T	C	T	G	C	C	G	A	-	-	-	-	-	-	-	-	-	-	C	C	C	T	G	A	C	C	G	G	G	-	1.54% (1105 reads)			
C	T	G	C	T	C	C	C	T	G	T	C	T	G	-	-	-	-	-	-	-	A	C	T	G	C	T	G	A	C	C	C	T	G	A	C	C	G	G	G	-	1.21% (867 reads)		
C	T	G	C	T	C	C	C	T	G	T	C	T	G	C	C	G	A	T	G	-	-	C	T	G	C	T	G	A	C	C	C	T	G	A	C	C	G	G	G	-	1.06% (758 reads)		
C	T	G	C	T	C	C	C	T	G	T	C	T	G	C	C	G	T	C	T	G	A	C	T	G	C	T	G	A	C	C	C	T	G	A	C	C	G	G	G	-	1.06% (757 reads)		
C	T	G	C	T	C	C	C	-	G	A	C	T	G	C	T	G	A	C	C	T	G	C	T	C	C	C	G	A	C	T	G	C	T	G	A	C	C	C	T	-	0.80% (571 reads)		
C	T	G	C	T	C	C	C	T	G	T	C	T	G	-	-	-	-	-	-	-	-	-	-	-	-	-	A	C	C	C	T	G	A	C	C	G	G	G	-	0.70% (498 reads)			
C	T	G	C	T	C	C	C	T	G	T	C	T	G	C	C	G	A	T	G	-	-	-	-	-	-	-	-	-	-	-	-	-	-	-	-	-	-	-	-	0.65% (462 reads)			
C	-	-	-	-	-	-	-	-	-	-	-	-	-	-	-	-	-	-	-	-	-	-	-	C	T	G	A	C	C	C	T	G	A	C	C	G	G	G	-	0.61% (439 reads)			
C	T	G	C	T	C	C	C	T	G	T	C	T	G	C	C	G	A	T	G	A	C	A	C	G	A	C	T	G	C	T	G	A	C	C	C	T	G	A	C	-	0.55% (391 reads)		
C	T	G	C	T	C	C	C	T	G	T	C	T	G	C	C	G	A	-	-	-	-	-	-	-	-	-	-	-	-	-	-	-	-	-	-	-	-	-	-	0.52% (373 reads)			
T	G	C	T	C	C	C	T	G	T	C	T	G	C	T	C	C	C	T	G	T	C	T	G	C	C	G	A	C	T	G	C	T	G	A	C	C	C	T	G	-	0.52% (369 reads)		
C	T	G	C	T	C	C	C	A	G	-	-	-	-	-	-	-	-	-	-	-	A	C	T	G	C	T	G	A	C	C	C	T	G	A	C	C	G	G	G	-	0.50% (359 reads)		
C	T	G	C	T	C	C	C	T	G	T	C	T	G	C	C	G	A	T	G	-	-	-	-	-	-	-	-	-	-	-	-	-	A	C	C	G	G	G	-	0.44% (318 reads)			
C	T	G	C	T	C	C	C	T	G	T	C	T	G	C	C	T	-	-	-	G	A	C	T	G	C	T	G	A	C	C	C	T	G	A	C	C	G	G	G	-	0.40% (287 reads)		
C	T	G	A	C	C	C	-	-	-	-	-	-	-	-	-	-	-	-	-	-	-	-	-	-	T	G	A	C	C	C	T	G	A	C	C	G	G	G	-	0.40% (286 reads)			
C	T	G	C	T	C	C	C	T	G	T	C	T	G	C	C	G	A	T	G	A	A	C	T	G	C	T	G	A	C	C	C	T	G	A	C	C	G	G	G	-	0.39% (276 reads)		
C	T	G	C	T	-	-	-	-	-	-	-	-	-	-	-	-	-	-	-	-	-	-	-	G	C	T	G	A	C	C	C	T	G	A	C	C	G	G	G	-	0.35% (248 reads)		
-	-	-	-	-	-	-	-	-	-	-	-	-	-	-	-	-	-	-	-	-	-	-	T	G	C	T	G	A	C	C	C	T	G	A	C	C	G	G	G	-	0.34% (244 reads)		
C	T	G	C	T	C	C	C	T	G	T	C	T	G	C	C	G	A	T	G	G	C	A	G	A	C	A	G	G	G	A	G	C	A	G	C	A	G	T	C	-	0.34% (243 reads)		
C	T	G	C	T	C	C	C	T	G	T	C	T	G	C	C	-	-	-	-	-	-	-	T	G	C	T	G	A	C	C	C	T	G	A	C	C	G	G	G	-	0.33% (238 reads)		
C	T	G	C	T	C	C	C	T	G	T	C	T	G	C	C	C	T	-	-	G	A	C	T	G	C	T	G	A	C	C	C	T	G	A	C	C	G	G	G	-	0.32% (229 reads)		
-	-	-	-	-	-	-	-	-	-	-	C	A	G	T	G	G	A	G	G	G	-	-	-	-	-	-	-	-	-	-	-	G	A	C	C	G	G	G	-	0.31% (222 reads)			
C	T	G	C	T	C	C	C	T	G	C	C	T	G	C	C	-	-	-	-	-	-	C	T	G	T	C	T	G	A	C	C	C	T	G	A	C	C	G	G	-	0.31% (221 reads)		
C	T	G	C	T	C	C	C	T	G	T	C	T	G	C	C	G	A	T	G	-	A	T	T	G	C	T	G	A	C	C	C	T	G	A	C	C	G	G	G	-	0.29% (209 reads)		
C	T	G	C	T	C	C	C	T	G	T	C	T	G	C	T	C	C	-	-	-	-	C	T	G	C	T	G	A	C	C	C	T	G	A	C	C	G	G	G	-	0.29% (205 reads)		
C	T	G	C	T	C	C	C	A	G	T	C	T	G	C	-	-	-	-	-	-	-	-	-	-	-	T	G	A	C	C	C	T	G	A	C	C	G	G	G	-	0.27% (191 reads)		
C	T	G	C	T	C	C	C	T	G	T	C	T	G	C	C	G	A	C	T	G	C	T	G	A	C	T	G	A	C	C	C	T	G	A	C	C	T	G	A	C	C	-	0.25% (179 reads)
C	T	G	C	T	C	C	C	T	G	T	C	T	G	C	C	-	-	T	G	C	T	C	C	C	T	G	T	C	T	G	C	T	G	A	C	C	C	T	G	-	0.25% (176 reads)		
C	T	G	C	T	C	C	C	T	G	T	C	T	G	C	C	G	A	C	A	G	G	G	A	G	C	A	G	G	T	G	T	T	C	C	C	T	G	T	C	-	0.24% (175 reads)		
-	-	-	-	-	-	-	-	-	-	-	-	-	-	-	-	-	-	-	-	-	-	-	-	-	-	-	A	C	C	C	T	G	A	C	C	G	G	G	-	0.24% (173 reads)			
C	T	G	C	T	C	C	C	T	G	T	C	T	G	T	G	T	A	-	-	G	A	C	T	G	C	T	G	A	C	C	C	T	G	A	C	C	G	G	G	-			

bold Substitutions

Insertions

- Deletions

----- Predicted cleavage position

C T G C T C C C T G T C T G C C G A - - - - C T G C T G A C C C T G A C C G G G	-19.98% (15322 reads)
C T G C T C C C T G T C T G C C G A T G G A C T G C T G A C C C T G A C C G G G	-17.04% (13063 reads)
C T G C T C C C T G T C T G C C G A T G - - - - - C T G A C C C T G A C C G G G	-9.81% (7518 reads)
C T G C T C C C T G T C T G C C G A T G - A C T G C T G A C C C T G A C C G G G	-4.17% (3198 reads)
C T G C T C C C T G T C T G C - - - - - - - T G A C C C T G A C C G G G	-4.07% (3122 reads)
C T G C T C C C T G T C T G C C - - - - - - - - - - - - - - - - -	-1.91% (1465 reads)
C T G C T C C C T G T C T G C C G A T G - - C T G C T G A C C C T G A C C G G G	-1.82% (1397 reads)
C T G C T C C C T G T C T G - - - - - - - - - - - - - A C C G G G	-1.82% (1395 reads)
C T G C T C C C T G T C T G C C G A T G - - - - - - - A C C C T G A C C G G G	-1.58% (1213 reads)
C T G C T C C C T G T C T G C C G A - - - - - - - - - - - - - - - -	-1.51% (1160 reads)
C T G C T C C C T G T C T G C C G A - - - - - - - - C C C T G A C C G G G	-1.46% (1122 reads)
C T G C T C C C T G - - - - - - - - - A C T G C T G A C C C T G A C C G G G	-1.37% (1054 reads)
C T G C T C C C T G T C T G C C G A T G A C T G C T G A C C C T G A C C C T G	-1.22% (936 reads)
C T G C T C C C T G T C T G C C G A T G C T G A C T G C T G A C C C T G A C C G	-1.14% (872 reads)
C T G C T C C C T G T C T G C C G A T G C C G A C T G C T G A C C C T G A C C G	-0.95% (728 reads)
C T G C T C C C T G T C T G C C G A T G - T C T G C T G A C C C T G A C C G G G	-0.86% (661 reads)
C T G C T C C C T G - - - - - - - - - C T G A C C C T G A C C G G G	-0.84% (644 reads)
C T G C T C C C T G T C T G - - - - - - - A C C C T G A C C G G G	-0.82% (627 reads)
C T G C T C C C T G T C T G C C G A C T G A C T G C T G A C C C T G A C C G G G	-0.77% (589 reads)
C T G C T C C C T G T C T G C C G A T G A C C - - C T G A C C C T G A C C G G G	-0.62% (473 reads)
C T G C T C C C T G T C T G C C G A T G A C A G C T G C T G A C C T G A C C	-0.55% (425 reads)
C T G C T C C C T G T C T G C C G A T G T C T G C G A C T G C T G A C C C T G A	-0.54% (414 reads)
C T G C T C C C T G T C T G C C G A T G - - - - - - - - - - - - - - - -	-0.48% (370 reads)
C T G C T C C C T G T C T G C C G A T G - - - - - - - - - - - A C C G G G	-0.47% (362 reads)
C T G C T C C C T G T C T G C C G A T T - - - - - T T G A C C C T G A C C G G G	-0.46% (355 reads)
C T G C T C C C T G - C T C C C G A - - - - C T G C T G A C C C T G A C C G G G	-0.45% (348 reads)
C T G C T C A G G G T C - - - - - - - A C T G C T G A C C C T G A C C G G G	-0.43% (331 reads)
C T G C T C C C T G T C T G C C - - - - - - - T G C T G A C C C T G A C C G G G	-0.41% (312 reads)
C T G C T C C C T G T C T G C C G A T G - A C C G A T G A C C C T G A C C G G G	-0.40% (306 reads)
C T G C T C C C T G T C T G C C G A T G - A C - - C T G A C C C T G A C C G G G	-0.40% (305 reads)
G T C T G C C C T G T C T G C C G A T G G - - - G C T G A C C C T G A C C G G G	-0.39% (296 reads)
C T G C T C C C T G T C T G C C G A T G G T A A C T G C T G A C C C T G A C C G	-0.35% (266 reads)
C T G C T - - - - - - - - - - - - - - - G A C C C T G A C C G G G	-0.33% (250 reads)
C T G C T C C C T G T C T G C C G A T G - - - - - - - A C C G T G A C C G G G	-0.32% (247 reads)
T G C T C C C T G T C T G G C A G A C A G G G A G C A G G - - - T G A C C G G G	-0.31% (234 reads)
C T G C T C C C T G T C T G C C G A C - - - C T G - - - - - T G A C C G G G	-0.30% (227 reads)
- -	-0.28% (212 reads)
C T G C T C C C T G T C T G C C G A T G T C T G C T G A C T C C T G A C T G G C	-0.27% (208 reads)
C T G C T C C C T G T C T G C C G - - - - - - - - - - - - - - - -	-0.27% (207 reads)
C T G C T C C C T G T C T G C A G A - - - C T G C T G A C C C T G A C C G G G	-0.23% (175 reads)
C T G C T C C C T G T C T G C C G A T G G A A T G T G G T C C C C T C T C A A A	-0.22% (171 reads)
C T G C T C C C T G T C T G C C G A T G A T C T G A C T G C T G A C C C T G A C	-0.22% (168 reads)
C T G C T C C C T G T C T G C C G A T G C T G T C T G T G T C T G C T G A C C C T G	-0.22% (168 reads)
- - - - - - - - - - - - - - - - - - - T G C T G A C C C T G A C C G G G	-0.22% (166 reads)
- - - - - - - - - - - - - - - - - G A C T G C T G A C C C T G A C C G G G	-0.21% (163 reads)
C T G C T C C C T G T C T G C C G A T G C T G A C C C T G A C T G C T G A C C C	-0.21% (159 reads)
C T G C T C C C A - - C T G G C C T T - - - - - T G A C C C T G A C C G G G	-0.21% (158 reads)
C T G C T C C C T G T C T G C T - - - - - - - C C C T G T C - - - -	-0.20% (157 reads)
C T G C T C C C T G T C T G C C G A T T G A C T G C T G A C C C T G A C C G G G	-0.20% (154 reads)

bold

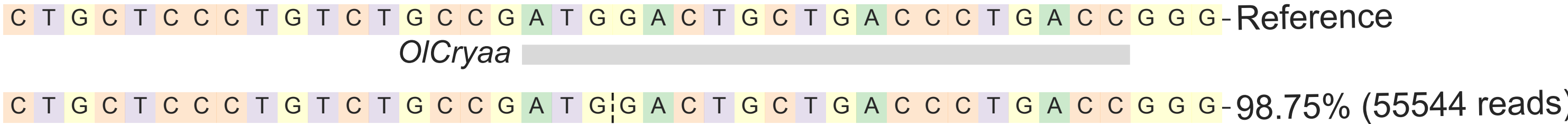
Substitutions

Insertions

-

Deletions

Predicted cleavage position




bold Substitutions

Insertions

- Deletions


----- Predicted cleavage position

uninjected pool1 *OlCryaa*

C T G C T C C C T G T C T G C C G A T G G A C T G C T G A C C C T G A C C G G G - Reference
OlCryaa 

C T G C T C C C T G T C T G C C G A T G **G** A C T G C T G A C C C T G A C C G G G - 98.87% (50328 reads)

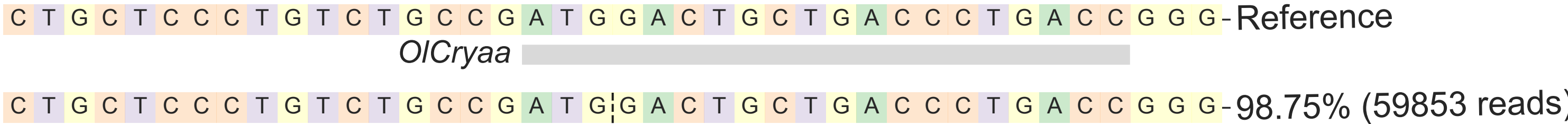
bold Substitutions

 Insertions

- Deletions

----- Predicted cleavage position

uninjected pool2 *OlCryaa*



bold Substitutions

Insertions

- Deletions

----- Predicted cleavage position

uninjected pool3 *OlCryaa*

A	T	T	T	C	T	G	T	T	G	T	C	C	C	C	T	G	C	C	T	-	-	-	-	C	T	T	T	G	C	G	C	G	C	T	C	T	G	C	T	-	10.87% (6287 reads)	
A	T	T	T	C	T	G	T	T	G	T	C	C	C	C	T	G	C	C	T	G	G	T	-	C	T	T	T	G	C	G	C	G	C	T	C	T	G	C	T	-	7.02% (4059 reads)	
A	T	T	T	C	T	G	T	T	G	T	C	C	C	C	T	G	C	C	T	-	-	-	-	-	-	T	T	G	C	G	C	G	C	T	C	T	G	C	T	-	6.05% (3502 reads)	
A	T	T	T	C	T	G	T	T	G	T	C	C	C	C	T	G	C	C	T	G	G	T	T	T	C	T	T	T	G	C	G	C	G	C	T	C	T	G	C	T	-	4.22% (2440 reads)
A	T	T	T	C	T	G	T	T	G	T	C	C	C	C	T	G	C	C	T	G	-	-	T	C	T	T	T	G	C	G	C	G	C	T	C	T	G	C	T	-	3.20% (1853 reads)	
A	T	T	T	C	T	G	T	T	G	T	C	C	C	C	T	G	C	C	T	G	C	C	T	C	T	T	T	G	C	G	C	G	C	T	C	T	G	C	T	-	2.90% (1679 reads)	
A	T	T	T	C	T	G	T	T	G	T	C	C	C	C	T	G	C	C	T	-	-	-	-	-	-	-	-	-	-	-	-	-	-	-	-	-	-	-	-	2.81% (1626 reads)		
A	T	T	T	C	T	G	T	T	G	T	C	C	C	C	T	G	C	-	-	-	-	-	-	-	-	-	-	-	G	C	G	C	T	C	T	G	C	T	-	2.79% (1616 reads)		
A	T	T	T	C	T	G	T	T	G	T	C	C	C	C	T	G	C	C	T	G	G	T	T	-	-	-	-	G	C	G	C	G	C	T	C	T	G	C	T	-	2.41% (1397 reads)	
A	T	T	T	C	T	G	T	T	G	T	-	-	-	-	-	-	-	-	-	-	-	-	-	-	-	-	-	-	G	C	G	C	T	C	T	G	C	T	-	2.21% (1277 reads)		
A	T	T	T	C	T	G	T	T	G	T	C	C	C	C	T	G	C	C	T	G	G	T	-	-	-	-	-	G	C	G	C	G	C	T	C	T	G	C	T	-	2.15% (1244 reads)	
A	T	T	T	C	T	G	T	T	G	T	C	C	C	C	T	G	C	C	T	G	C	-	-	C	T	T	T	G	C	G	C	G	C	T	C	T	G	C	T	-	1.86% (1078 reads)	
A	T	T	T	C	T	G	T	T	G	T	C	C	C	C	T	G	C	-	-	-	-	-	-	-	-	-	-	-	-	-	G	C	T	C	T	G	C	T	-	1.85% (1071 reads)		
A	T	T	T	C	T	G	T	T	G	T	C	C	C	C	T	G	C	C	T	G	G	T	T	C	T	T	T	G	C	G	C	G	C	T	C	T	G	C	T	-	1.84% (1062 reads)	
A	T	T	T	C	T	G	T	T	G	T	C	C	C	C	T	G	C	C	T	G	G	G	G	C	T	C	T	G	C	T	G	C	C	T	G	C	G	C	G	-	1.84% (1062 reads)	
A	T	T	T	C	T	G	T	T	G	T	C	C	C	C	T	-	-	-	-	-	-	-	-	-	-	T	T	G	C	G	C	G	C	T	C	T	G	C	T	-	1.69% (979 reads)	
A	T	T	T	C	T	G	T	T	G	T	C	C	C	C	T	G	C	C	T	G	G	T	T	G	T	C	-	-	-	-	-	-	-	-	-	-	-	C	C	-	1.44% (835 reads)	
A	T	T	T	C	T	T	C	-	-	-	-	-	-	-	-	-	-	-	-	-	-	-	T	C	T	T	T	G	C	G	C	G	C	T	C	T	G	C	T	-	1.43% (830 reads)	
A	T	T	T	C	T	G	T	T	G	T	C	C	C	C	T	G	C	C	T	-	-	-	-	-	-	-	-	G	C	G	C	G	C	T	C	T	G	C	T	-	1.42% (823 reads)	
A	T	T	T	C	T	G	T	T	G	T	C	C	C	C	T	G	C	C	T	G	G	G	A	C	A	A	C	A	G	A	A	A	T	T	T	G	C	G	C	-	1.40% (811 reads)	
A	T	T	T	C	T	G	T	T	G	T	C	C	C	C	T	G	T	C	T	G	T	C	T	C	C	C	C	T	G	C	C	C	T	G	C	C	T	C	T	-	1.40% (808 reads)	
A	T	T	T	C	T	G	T	T	G	T	C	C	C	C	T	G	C	C	T	G	G	T	T	C	T	T	C	T	T	T	G	C	G	C	G	C	T	C	T	-	1.24% (716 reads)	
A	T	T	T	C	T	G	T	T	G	T	C	C	C	C	T	G	C	C	T	G	G	T	T	-	-	-	T	G	C	G	C	G	C	T	C	T	G	C	T	-	1.12% (647 reads)	
A	T	T	T	C	T	G	T	T	G	T	C	C	C	C	T	G	C	C	C	-	-	-	C	C	T	T	T	G	C	G	C	G	C	T	C	T	G	C	T	-	1.09% (628 reads)	
A	T	T	T	C	T	G	T	T	G	T	C	C	C	C	T	G	C	C	T	G	G	T	T	T	A	G	A	G	T	A	G	C	G	C	C	T	C	T	-	0.95% (552 reads)		
A	T	T	T	C	T	G	T	T	G	T	C	C	C	C	T	G	C	C	T	G	G	T	A	T	C	T	T	T	G	C	G	C	G	C	T	C	T	G	C	-	0.92% (533 reads)	
A	T	T	T	C	T	G	T	T	G	T	C	C	C	C	T	G	C	C	T	G	G	T	G	G	G	G	T	C	T	T	T	G	C	G	C	G	C	T	C	-	0.92% (531 reads)	
A	T	T	T	C	T	G	T	T	G	T	C	C	C	C	T	G	C	-	-	-	-	-	T	C	T	T	T	G	C	G	C	G	C	T	C	T	G	C	T	-	0.91% (526 reads)	
A	T	T	T	C	T	G	T	T	G	T	C	C	C	C	T	G	C	C	C	-	-	-	T	C	T	T	T	G	C	G	C	G	C	T	C	T	G	C	T	-	0.87% (505 reads)	
A	T	T	T	C	T	G	T	T	G	T	C	C	C	C	T	G	C	C	T	G	G	T	A	A	G	-	-	G	C	G	C	G	C	T	C	T	G	C	T	-	0.85% (491 reads)	
-	-	-	T	C	T	G	C	T	C	T	C	-	-	-	-	-	-	-	-	-	-	-	-	-	-	-	-	-	G	C	G	C	T	C	T	G	C	T	-	0.78% (454 reads)		
A	T	T	T	C	T	G	T	T	G	T	C	C	C	C	T	G	C	C	T	G	A	-	-	C	T	T	T	G	C	G	C	G	C	T	C	T	G	C	T	-	0.75% (434 reads)	
A	T	T	T	C	T	G	T	T	G	T	C	C	C	C	T	G	C	C	T	G	G	G	G	A	C	A	A	C	A	G	A	A	A	T	T	C	C	T	G	-	0.72% (419 reads)	
A	T	T	T	C	T	G	T	T	G	T	C	C	C	C	T	G	C	C	T	G	G	T	T	C	T	-	-	-	-	-	-	-	-	-	-	-	-	-	-	-	0.70% (407 reads)	
A	T	T	T	C	T	G	T	T	G	T	C	C	C	C	T	G	C	C	T	G	G	T	C	T	C	C	C	C	T	G	T	C	T	T	T	G	C	G	C	-	0.63% (366 reads)	
A	T	T	T	C	T	G	T	T	G	T	C	C	C	C	T	G	C	C	T	G	G	A	G	G	T	C	C	C	C	T	G	C	C	T	G	C	C	T	C	-	0.63% (362 reads)	
A	T	T	T	C	T	G	T	T	G	T	C	C	C	C	T	G	C	C	T	G	G	T	T	-	-	T	T	G	C	G	C	G	C	T	C	T	G	C	T	-	0.59% (342 reads)	
A	T	T	T	C	T	G	T	T	G	T	C	C	C	C	T	G	C	C	T	G	G	T	G	C	C	T	T	T	G	C	G	C	G	C	T	C	T	G	C	-	0.56% (323 reads)	
A	T	T	T	C																																						

bold

Substitutions

Insertions

-

Deletions

Predicted cleavage position

A	T	T	T	C	T	G	T	T	G	T	C	C	C	C	T	G	C	C	T	-	-	-	-	C	T	T	T	G	C	G	C	G	C	T	C	T	G	C	T	-	9.95% (5878 reads)		
A	T	T	T	C	T	G	T	T	G	T	C	C	C	C	T	G	C	C	T	-	-	-	-	-	-	T	T	G	C	G	C	G	C	T	C	T	G	C	T	-	8.93% (5278 reads)		
A	T	T	T	C	T	G	T	T	G	T	C	C	C	C	T	G	C	C	T	G	G	T	T	C	T	T	T	G	C	G	C	G	C	T	C	T	G	C	T	-	8.50% (5025 reads)		
A	T	T	T	C	T	G	T	T	G	T	C	C	C	C	T	G	C	C	T	G	G	T	-	C	T	T	T	G	C	G	C	G	C	T	C	T	G	C	T	-	5.55% (3279 reads)		
A	T	T	T	C	T	G	T	T	G	T	C	C	C	C	T	G	C	C	T	G	G	T	T	-	-	-	T	G	C	G	C	G	C	T	C	T	G	C	T	-	4.61% (2724 reads)		
A	T	T	T	C	T	G	T	T	G	T	C	C	C	C	T	G	C	C	T	G	G	T	T	T	C	T	T	T	G	C	G	C	G	C	T	C	T	G	C	T	-	2.74% (1620 reads)	
A	T	T	T	C	T	G	T	T	G	T	C	C	C	C	T	G	C	C	T	G	G	T	-	-	-	-	-	-	G	C	G	C	G	C	T	C	T	G	C	T	-	2.67% (1578 reads)	
A	T	T	T	C	T	G	T	T	G	T	C	C	C	C	T	G	C	C	T	-	-	-	-	-	-	-	-	G	C	G	C	G	C	T	C	T	G	C	T	-	2.57% (1518 reads)		
A	T	T	T	C	T	G	T	T	G	T	C	C	C	C	T	G	C	C	T	G	G	-	-	-	-	-	-	G	C	G	C	G	C	T	C	T	G	C	T	-	2.13% (1256 reads)		
A	T	T	T	C	T	G	T	T	G	T	C	C	C	C	T	G	C	C	T	G	G	T	C	T	T	T	G	C	C	T	C	T	G	T	C	T	T	T	G	-	2.08% (1229 reads)		
A	T	T	T	C	T	G	T	T	G	T	C	C	C	C	T	G	C	C	T	G	G	T	C	C	C	C	T	C	T	T	T	G	C	G	C	T	C	-	-	-	2.00% (1181 reads)		
A	T	T	T	C	T	G	T	T	G	T	C	C	C	C	T	G	C	C	T	-	-	-	-	-	-	-	-	-	G	C	G	C	T	C	T	G	C	T	-	1.77% (1043 reads)			
A	T	T	T	C	T	G	T	T	G	T	C	C	C	C	T	G	C	C	T	G	C	C	T	C	T	T	T	G	C	G	C	G	C	T	C	T	G	C	T	-	1.75% (1032 reads)		
A	T	T	T	C	T	G	T	T	G	T	C	C	C	C	T	C	-	-	-	-	-	-	-	-	-	-	-	-	G	C	G	C	G	C	T	C	T	G	C	T	-	1.68% (993 reads)	
A	T	T	T	C	T	G	T	T	G	T	C	C	C	C	T	G	C	C	T	G	G	-	-	-	-	-	-	G	C	G	C	G	C	T	C	T	G	C	T	-	1.52% (896 reads)		
A	T	T	T	C	T	G	T	T	G	T	C	C	C	C	T	G	C	-	-	-	-	-	-	-	-	-	-	-	G	C	G	C	T	C	T	G	C	T	-	1.46% (863 reads)			
A	T	T	T	C	T	G	T	T	G	T	C	C	C	C	T	G	C	C	T	G	-	-	-	C	T	T	T	G	C	G	C	G	C	T	C	T	G	C	T	-	1.41% (835 reads)		
A	T	T	T	C	T	G	T	T	G	T	C	C	C	C	T	G	C	C	T	G	G	G	A	C	T	T	T	G	C	G	C	G	C	T	C	T	G	C	T	-	1.38% (813 reads)		
A	T	T	T	C	T	G	T	T	G	T	C	C	C	C	T	G	C	C	T	G	C	C	C	C	C	C	T	C	T	T	T	G	C	G	C	G	C	-	-	-	1.37% (809 reads)		
T	G	T	T	G	T	C	C	C	C	T	G	C	C	C	T	G	C	C	C	T	G	C	C	T	C	T	T	T	G	C	G	C	G	C	T	C	T	G	C	T	-	1.36% (805 reads)	
A	T	T	T	C	T	G	T	T	G	T	C	C	C	C	-	-	-	-	-	-	-	-	-	C	T	T	T	G	C	G	C	G	C	T	C	T	G	C	T	-	1.32% (780 reads)		
A	T	T	T	C	T	G	T	T	G	T	C	C	C	C	T	G	C	C	-	-	-	-	-	-	-	-	-	-	-	-	-	-	-	-	-	-	-	-	-	1.29% (760 reads)			
A	T	T	T	C	T	G	T	T	G	T	C	C	C	C	T	G	C	C	T	G	G	T	-	-	-	-	-	-	-	-	-	-	-	-	-	-	-	-	-	-	1.28% (759 reads)		
A	T	T	T	C	T	G	T	T	G	T	C	C	C	C	T	G	C	C	T	G	G	T	C	T	T	T	T	T	C	T	T	G	C	C	T	T	T	T	-	-	1.21% (715 reads)		
A	T	T	T	C	T	G	T	T	G	T	C	C	C	C	T	-	-	-	-	-	-	-	-	-	T	T	G	C	G	C	G	C	T	C	T	G	C	T	-	-	1.13% (665 reads)		
A	T	T	T	C	T	G	T	T	G	T	C	C	C	C	T	G	C	C	T	-	-	-	T	C	T	T	T	G	C	G	C	G	C	T	C	T	G	C	T	-	1.05% (621 reads)		
A	T	T	T	C	T	G	T	T	G	T	C	C	C	C	T	G	C	C	A	-	-	-	-	-	-	-	-	-	T	G	C	G	C	T	C	T	G	C	T	-	1.00% (593 reads)		
A	T	T	T	C	T	G	T	T	G	T	C	C	C	C	T	G	C	T	G	T	C	G	T	C	C	C	T	G	C	G	C	A	A	T	A	A	T	A	T	T	G	-	0.97% (571 reads)
-	-	-	-	-	-	-	-	-	-	-	-	-	-	-	-	-	-	-	-	-	-	-	-	-	-	T	T	T	G	C	G	C	G	C	T	C	T	G	C	T	-	0.92% (541 reads)	
A	T	T	T	C	T	G	T	T	G	T	C	C	C	C	T	G	C	C	T	-	G	C	T	C	T	T	T	G	C	G	C	G	C	T	C	T	G	C	T	-	0.81% (479 reads)		
A	T	T	T	C	T	G	T	T	G	T	C	C	C	C	T	G	C	G	-	G	C	C	T	C	T	T	T	G	C	G	C	G	C	T	C	T	G	C	T	-	0.76% (451 reads)		
A	T	T	T	C	T	G	T	T	G	T	C	C	C	C	T	G	-	-	-	-	-	-	T	C	T	T	T	G	C	G	C	G	C	T	C	T	G	C	T	-	0.74% (438 reads)		
-	-	-	T	C	T	G	-	-	-	-	C	G	C	C	T	G	C	C	T	-	-	C	T	C	T	T	T	G	C	G	C	G	C	T	C	T	G	C	T	-	0.71% (421 reads)		
A	T	T	T	C	T	G	T	T	G	T	A	C	C	C	C	T	G	C	C	T	G	G	T	-	C	T	T	T	G	C	G	C	G	C	T	C	T	G	C	T	-	0.63% (375 reads)	
A	T	T	T	C	T	G	T	T	G	T	C	C	C	C	T	C	C	C	-	-	-	-	-	C	T	T	T	G	C	G	C	G	C	T	C	T	G	C	T	-	0.55% (323 reads)		
-	-	-	-	-	-	-	-	-	-	-	-	-	-	-	-	-	-	-	-	-	-	-	-	C	T	T	T	G	C	G	C	G	C	T	C	T	G	C	T	-	0.47% (277 reads)		
A	T	T	T	C	T	G	T	T	G	T	C	C	C	C	T	G	C	C	T	G	G	T	C	A	C	A	C	C	C	T	G	C	-	-	-	C	T	G	C	T	-	0.45% (268 reads)	
A	T	T	T	C	T	G	T	T	G	T	C	C	C	-	-	-	-	-	T	G	T	T	G	T																			

bold

Substitutions

Insertions

-

Deletions

Predicted cleavage position

A	T	T	T	C	T	G	T	T	G	T	C	C	C	C	T	G	C	C	T	-	-	-	-	C	T	T	T	G	C	G	C	G	C	T	C	T	G	C	T	-	9.12%	(5301 reads)	
A	T	T	T	C	T	G	T	T	G	T	C	C	C	C	T	G	C	C	T	G	G	T	-	C	T	T	T	G	C	G	C	G	C	T	C	T	G	C	T	-	8.35%	(4854 reads)	
A	T	T	T	C	T	G	T	T	G	T	C	C	C	C	T	G	C	C	T	-	-	-	-	-	-	T	T	G	C	G	C	G	C	T	C	T	G	C	T	-	7.63%	(4433 reads)	
A	T	T	T	C	T	G	T	T	G	T	C	C	C	C	T	G	C	C	T	G	C	-	-	C	T	T	T	G	C	G	C	G	C	T	C	T	G	C	T	-	4.65%	(2703 reads)	
A	T	T	T	C	T	G	T	T	G	T	C	C	C	C	T	G	C	C	T	G	G	T	T	-	-	-	T	G	C	G	C	G	C	T	C	T	G	C	T	-	4.55%	(2644 reads)	
A	T	T	T	C	T	G	T	T	G	T	C	C	C	C	T	G	C	C	-	-	-	-	-	-	-	-	-	-	-	-	-	-	-	-	-	-	-	-	-	4.11%	(2386 reads)		
A	T	T	T	C	T	G	T	T	G	T	C	C	C	C	T	G	C	C	T	-	-	-	-	-	-	-	T	G	C	G	C	G	C	T	C	T	G	C	T	-	3.21%	(1867 reads)	
-	-	-	-	-	-	-	-	-	-	-	-	-	-	-	-	-	-	-	-	-	-	-	C	T	T	T	G	C	G	C	G	C	T	C	T	G	C	T	-	3.04%	(1767 reads)		
A	T	T	T	C	T	G	T	T	G	T	C	C	C	C	T	G	C	C	T	G	G	T	G	T	C	T	T	T	G	C	G	C	G	C	T	C	T	G	C	-	2.90%	(1684 reads)	
A	T	T	T	C	-	G	T	T	G	-	-	-	-	-	-	-	-	-	-	-	-	-	-	-	-	-	-	-	-	-	-	-	-	-	-	-	-	-	-	2.84%	(1653 reads)		
A	T	T	T	C	T	G	T	T	G	T	C	C	C	C	T	G	C	C	T	G	G	T	-	-	-	-	-	-	-	-	-	-	-	-	-	-	-	-	-	-	2.57%	(1492 reads)	
A	T	T	T	C	T	G	T	T	G	T	C	C	C	C	T	G	C	-	-	-	-	-	-	-	-	-	-	-	G	C	G	C	T	C	T	G	C	T	-	2.44%	(1418 reads)		
A	T	T	T	C	T	G	T	T	G	T	C	C	C	C	T	G	C	C	T	-	-	-	-	-	-	-	-	-	G	C	G	C	T	C	T	G	C	T	-	1.98%	(1149 reads)		
A	T	T	T	C	T	G	T	T	G	T	C	C	C	C	T	G	C	C	T	G	G	T	T	C	T	T	T	G	C	G	C	G	C	T	C	T	G	C	T	-	1.77%	(1031 reads)	
A	T	T	T	C	T	G	T	T	G	T	C	C	C	C	T	G	C	C	T	-	-	-	-	-	-	-	-	-	G	C	G	C	G	C	T	C	T	G	C	T	-	1.45%	(845 reads)
A	T	T	T	C	T	G	T	T	G	T	C	C	C	C	T	G	C	C	C	-	-	-	T	C	T	T	T	G	C	G	C	G	C	T	C	T	G	C	T	-	1.11%	(647 reads)	
A	T	T	T	C	T	G	T	T	G	T	C	C	C	C	T	G	C	C	A	G	-	-	-	C	T	T	T	G	C	G	C	G	C	T	C	T	G	C	T	-	1.07%	(622 reads)	
A	T	T	T	C	T	G	T	T	G	T	C	C	C	C	T	G	C	C	T	G	C	C	C	C	T	C	T	T	T	G	C	G	C	G	C	T	C	T	G	C	-	1.06%	(616 reads)
-	-	-	-	-	-	-	-	-	-	-	-	-	-	-	-	-	-	-	-	-	-	-	-	-	-	-	-	-	G	C	G	C	T	C	T	G	C	T	-	1.05%	(609 reads)		
A	T	T	T	C	T	G	T	T	G	T	C	C	C	C	T	G	C	C	T	G	C	C	T	C	T	T	T	G	C	G	C	G	C	T	C	T	G	C	T	-	1.03%	(600 reads)	
A	T	T	T	C	T	G	T	T	G	T	C	C	C	C	T	G	C	C	T	G	C	C	C	C	T	C	T	T	T	G	C	G	C	G	C	T	C	T	G	-	0.93%	(543 reads)	
A	T	T	T	C	T	G	T	T	G	T	C	C	C	C	T	G	C	C	T	G	G	G	T	C	T	T	T	G	C	G	C	G	C	T	C	T	G	C	T	-	0.90%	(525 reads)	
A	T	T	T	C	T	G	T	T	G	T	C	C	C	C	-	-	-	-	-	-	-	-	-	-	-	-	-	-	-	-	-	-	-	-	-	-	-	-	-	0.90%	(524 reads)		
A	T	T	T	C	T	G	T	T	G	T	C	C	C	C	T	G	C	C	T	G	G	T	G	C	A	G	C	G	C	T	T	T	G	C	G	C	G	C	T	-	0.87%	(504 reads)	
A	T	T	T	C	T	G	T	T	G	T	C	C	C	C	T	G	C	C	T	G	G	T	C	C	C	T	A	C	T	T	T	G	C	G	C	G	C	T	C	-	0.86%	(500 reads)	
A	T	T	T	C	T	G	T	T	G	T	C	C	C	C	-	-	-	C	T	-	-	-	-	-	-	-	-	-	-	G	C	T	C	T	G	C	T	-	0.81%	(472 reads)			
A	T	T	T	C	T	G	T	T	G	T	C	C	C	C	T	-	-	-	-	-	-	-	-	-	-	-	T	G	C	G	C	G	C	T	C	T	G	C	T	-	0.73%	(425 reads)	
A	T	T	T	C	T	G	T	G	G	T	C	C	C	C	T	G	C	C	T	G	C	C	T	C	T	T	T	G	C	G	C	G	C	T	C	T	G	C	T	-	0.71%	(415 reads)	
A	T	T	T	C	T	G	T	T	G	T	C	C	C	C	T	G	-	-	-	-	-	-	T	C	T	T	T	G	C	G	C	G	C	T	C	T	G	C	T	-	0.69%	(402 reads)	
A	T	T	T	C	T	G	T	T	G	T	C	C	C	C	T	G	C	C	T	G	G	T	T	A	G	G	G	T	T	A	G	G	G	T	T	A	T	G	C	-	0.69%	(402 reads)	
A	T	T	T	C	T	G	T	T	G	T	C	C	C	C	T	G	C	C	T	-	G	C	T	C	T	T	T	G	C	G	C	G	C	T	C	T	G	C	T	-	0.69%	(401 reads)	
A	T	T	T	C	T	G	T	T	G	T	C	C	C	C	-	G	C	C	T	-	-	-	-	-	-	T	T	G	C	G	C	G	C	T	C	T	G	C	T	-	0.68%	(396 reads)	
A	T	T	T	C	T	G	T	T	G	T	C	C	C	C	T	G	C	-	-	-	-	-	T	C	T	T	T	G	C	G	C	G	C	T	C	T	G	C	T	-	0.66%	(384 reads)	
A	T	T	T	C	T	G	T	T	G	T	C	C	C	C	T	G	C	C	T	G	-	-	T	C	T	T	T	G	C	G	C	G	C	T	C	T	G	C	T	-	0.65%	(380 reads)	
A	T	T	T	C	T	G	T	T	G	T	C	C																															

bold

Substitutions

Insertions

-

Deletions

Predicted cleavage position

A	T	T	T	C	T	G	T	T	G	T	C	C	C	C	T	G	C	C	T	G	G	T	T	C	T	T	T	G	C	G	C	G	C	T	C	T	G	C	T	Reference			
OIRx3																																											
A	T	T	T	C	T	G	T	T	G	T	C	C	C	C	T	G	C	C	T	G	G	T	T	C	T	T	T	G	C	G	C	G	C	T	C	T	G	C	T	65.24% (43333 reads)			
A	T	T	T	C	T	G	T	T	G	T	C	C	C	C	T	G	C	C	T	G	G	T	-	C	T	T	T	G	C	G	C	G	C	T	C	T	G	C	T	3.09% (2055 reads)			
A	T	T	T	C	T	G	T	T	G	T	C	C	C	C	T	G	C	C	T	-	-	-	-	-	-	T	T	G	C	G	C	G	C	T	C	T	G	C	T	3.07% (2040 reads)			
A	T	T	T	C	T	G	T	T	G	T	C	C	C	C	T	G	C	C	T	-	-	-	-	C	T	T	T	G	C	G	C	G	C	T	C	T	G	C	T	2.95% (1962 reads)			
A	T	T	T	C	T	G	T	T	G	T	C	C	C	C	T	G	C	C	T	-	-	-	-	-	-	-	-	G	C	G	C	G	C	T	C	T	G	C	T	0.99% (655 reads)			
A	T	T	T	C	T	G	T	T	G	T	C	C	C	C	T	G	C	C	T	G	-	-	T	C	T	T	T	G	C	G	C	G	C	T	C	T	G	C	T	0.80% (532 reads)			
A	T	T	T	C	T	G	T	T	G	T	C	C	C	C	T	G	C	C	T	G	-	-	-	C	T	T	T	G	C	G	C	G	C	T	C	T	G	C	T	0.80% (530 reads)			
A	T	T	T	C	T	G	T	T	G	T	C	C	C	C	T	G	C	C	T	G	G	T	T	-	-	-	T	G	C	G	C	G	C	T	C	T	G	C	T	0.72% (480 reads)			
A	T	T	T	C	T	G	T	T	G	T	C	C	C	C	T	G	C	-	-	-	-	-	-	-	-	-	-	-	G	C	G	C	T	C	T	G	C	T	0.71% (469 reads)				
A	T	T	T	C	T	G	T	T	G	T	C	C	C	C	T	G	C	C	-	-	-	-	-	-	-	-	-	-	-	-	-	-	-	-	-	-	-	-	0.60% (399 reads)				
A	T	T	T	C	T	G	T	T	G	T	C	C	C	C	T	G	C	C	T	G	G	T	T	T	C	T	T	T	G	C	G	C	G	C	T	C	T	G	C	0.59% (393 reads)			
A	T	T	T	C	T	G	C	T	G	T	C	C	C	C	T	G	C	C	T	-	-	-	-	C	T	T	T	G	C	G	C	G	C	T	C	T	G	C	T	0.56% (369 reads)			
A	T	T	T	C	T	G	T	T	G	T	C	C	C	C	T	G	C	C	T	G	G	T	T	T	T	T	T	T	G	C	G	C	G	C	T	C	T	G	C	0.54% (359 reads)			
A	T	T	T	C	T	G	T	T	G	T	C	C	C	C	T	G	C	C	T	-	G	C	T	C	T	T	T	G	C	G	C	G	C	T	C	T	G	C	T	0.52% (343 reads)			
A	T	T	T	C	T	G	T	T	G	T	C	C	C	C	T	G	C	C	T	G	G	T	-	-	-	-	-	G	C	G	C	G	C	T	C	T	G	C	T	0.50% (330 reads)			
A	T	T	T	C	T	G	T	T	G	T	C	C	C	C	T	G	C	C	T	G	G	T	T	-	-	-	-	G	C	G	C	G	C	T	C	T	G	C	T	0.46% (304 reads)			
A	T	T	T	C	T	G	T	T	G	T	C	C	C	C	T	-	-	-	-	-	-	-	-	-	-	T	T	G	C	G	C	G	C	T	C	T	G	C	T	0.42% (278 reads)			
A	T	T	T	C	T	G	T	T	G	T	C	C	C	C	T	G	C	C	T	G	G	G	G	G A C A A C A G					C	G	C	T	C	C	G	C	0.34% (223 reads)						
A	T	T	T	C	T	G	T	T	G	T	C	C	C	C	T	G	C	C	T	G	C	C	T	C	T	T	T	G	C	G	C	G	C	T	C	T	G	C	T	0.31% (207 reads)			
A	T	T	T	C	T	G	T	T	G	T	C	C	C	C	T	G	C	C	T	G	G	T	G	C	G C		T	T	T	G	C	G	C	G	C	T	C	T	G	0.30% (197 reads)			
A	T	T	T	C	T	G	T	T	G	T	C	C	C	C	T	G	C	-	-	-	-	-	T	C	T	T	T	G	C	G	C	G	C	T	C	T	G	C	T	0.29% (194 reads)			
A	T	T	T	C	T	G	T	T	G	T	C	C	C	C	T	G	C	C	T	G	G	T	G G		T	C	T	T	T	G	C	G	C	G	C	T	C	T	G	0.29% (193 reads)			
A	T	T	T	C	T	G	T	T	G	T	C	C	C	C	T	G	C	C	T	-	-	-	-	-	-	-	-	-	G	C	G	C	T	C	T	G	C	T	0.28% (186 reads)				
A	T	T	T	C	T	G	T	T	G	T	C	C	C	C	T	G	C	C	T	G	G	T	C C C			T	C	T	T	T	G	C	G	C	G	C	T	C	T	0.27% (180 reads)			
A	T	T	T	C	T	G	T	T	G	T	C	C	C	C	T	G	C	C	T	G	G	T	T	-	-	T	T	G	C	G	C	G	C	T	C	T	G	C	T	0.23% (150 reads)			
A	T	T	T	C	T	G	T	T	G	T	C	C	C	C	T	G	C	C	T	G	G	T	T	-	T	T	T	G	C	G	C	G	C	T	C	T	G	C	T	0.22% (149 reads)			
A	T	T	T	C	T	G	T	T	G	T	C	C	C	C	T	G	C	C	C	-	-	-	C	C	T	T	T	G	C	G	C	G	C	T	C	T	G	C	T	0.22% (145 reads)			
A	T	T	T	C	T	G	T	T	G	T	C	C	C	C	T	G	C	C	T	G	G	T	C	T	C	T	T	T	G	C	G	C	G	C	T	C	T	G	C	0.21% (142 reads)			

bold

Substitutions

Insertions

-

Deletions

Predicted cleavage position

A	T	T	T	C	T	G	T	T	G	T	C	C	C	C	T	G	C	C	T	G	G	T	T	C	T	T	T	G	C	G	C	G	C	T	C	T	G	C	T	Reference			
OIRx3																																											
A	T	T	T	C	T	G	T	T	G	T	C	C	C	C	T	G	C	C	T	G	G	T	T	C	T	T	T	G	C	G	C	G	C	T	C	T	G	C	T	71.88% (51091 reads)			
A	T	T	T	C	T	G	T	T	G	T	C	C	C	C	T	G	C	C	T	-	-	-	-	C	T	T	T	G	C	G	C	G	C	T	C	T	G	C	T	2.82% (2007 reads)			
A	T	T	T	C	T	G	T	T	G	T	C	C	C	C	T	G	C	C	T	G	G	T	-	C	T	T	T	G	C	G	C	G	C	T	C	T	G	C	T	2.46% (1745 reads)			
A	T	T	T	C	T	G	T	T	G	T	C	C	C	C	T	G	C	-	-	-	-	-	-	-	-	-	-	-	-	G	C	G	C	T	C	T	G	C	T	2.08% (1481 reads)			
A	T	T	T	C	T	G	T	T	G	T	C	C	C	C	T	G	C	C	T	-	-	-	-	-	-	-	T	T	G	C	G	C	G	C	T	C	T	G	C	T	1.96% (1395 reads)		
A	T	T	T	C	T	G	T	T	G	T	C	C	C	C	T	G	C	C	T	-	-	-	-	-	-	-	-	G	C	G	C	G	C	T	C	T	G	C	T	0.92% (653 reads)			
A	T	T	T	C	T	G	T	T	G	T	C	C	C	C	T	G	C	C	T	G	G	T	T	-	-	-	T	G	C	G	C	G	C	T	C	T	G	C	T	0.90% (641 reads)			
A	T	T	T	C	T	G	T	T	G	T	C	C	C	C	T	G	C	C	T	-	-	-	-	-	-	-	-	-	G	C	G	C	T	C	T	G	C	T	0.48% (344 reads)				
A	T	T	T	C	T	G	T	T	G	T	C	C	C	C	T	G	C	C	T	G	-	-	T	C	T	T	T	G	C	G	C	G	C	T	C	T	G	C	T	0.42% (296 reads)			
A	T	T	T	C	T	G	T	T	G	T	C	C	C	C	T	G	C	C	T	G	G	T	T	T	C	T	T	T	G	C	G	C	G	C	T	C	T	G	C	0.37% (260 reads)			
A	T	T	T	C	T	G	T	T	G	T	C	C	C	C	T	G	C	C	T	G	G	T	-	-	-	-	-	-	-	-	-	-	-	-	-	-	-	-	-	0.28% (197 reads)			
A	T	T	T	C	T	G	T	T	G	T	C	C	C	C	T	G	C	C	T	G	C	C	T	C	T	T	T	G	C	G	C	G	C	T	C	T	G	C	T	0.25% (177 reads)			
A	T	T	T	C	T	G	T	T	G	T	C	C	C	C	T	G	C	C	T	-	-	-	-	-	-	-	T	G	C	G	C	G	C	T	C	T	G	C	T	0.25% (175 reads)			
A	T	T	T	C	T	G	T	T	G	T	C	C	C	C	T	G	C	C	T	G	C	C	T	C	C	T	T	T	G	C	G	C	G	C	T	C	T	G	C	0.21% (147 reads)			

bold

Substitutions

Insertions

-

Deletions

Predicted cleavage position

A	T	T	T	C	T	G	T	T	G	T	C	C	C	C	T	G	C	C	T	G	G	T	T	C	T	T	T	G	C	G	C	G	C	T	C	T	G	C	T	- Reference			
OIRx3																																											
A	T	T	T	C	T	G	T	T	G	T	C	C	C	C	T	G	C	C	T	G	G	T	T	C	T	T	T	G	C	G	C	G	C	T	C	T	G	C	T	- 69.81% (40315 reads)			
A	T	T	T	C	T	G	T	T	G	T	C	C	C	C	T	G	C	C	T	-	-	-	-	C	T	T	T	G	C	G	C	G	C	T	C	T	G	C	T	- 3.06% (1765 reads)			
A	T	T	T	C	T	G	T	T	G	T	C	C	C	C	T	G	C	C	T	-	-	-	-	-	-	T	T	G	C	G	C	G	C	T	C	T	G	C	T	- 2.68% (1545 reads)			
A	T	T	T	C	T	G	T	T	G	T	C	C	C	C	T	G	C	C	T	G	G	T	-	C	T	T	T	G	C	G	C	G	C	T	C	T	G	C	T	- 2.66% (1534 reads)			
A	T	T	T	C	T	G	T	T	G	T	C	C	C	C	T	G	C	-	-	-	-	-	-	-	-	-	-	-	-	G	C	G	C	T	C	T	G	C	T	- 1.44% (832 reads)			
-	-	-	-	-	-	-	-	-	-	-	-	-	-	-	-	-	-	-	-	-	-	-	-	-	-	-	-	-	-	-	-	-	-	-	-	T	G	C	T	- 1.29% (747 reads)			
A	T	T	T	C	T	G	T	T	G	T	C	C	C	C	T	G	C	C	T	-	-	-	-	-	-	-	-	G	C	G	C	G	C	T	C	T	G	C	T	- 0.71% (408 reads)			
A	T	T	T	C	T	G	T	T	G	T	C	C	C	C	T	G	C	C	T	G	G	T	T	-	-	-	T	G	C	G	C	G	C	T	C	T	G	C	T	- 0.57% (331 reads)			
A	T	T	T	C	T	G	T	T	G	T	C	C	C	C	T	G	C	C	T	G	C	C	T	C	C	T	T	G	C	G	C	G	C	T	C	T	G	C	T	- 0.52% (303 reads)			
A	T	T	T	C	T	G	T	T	G	T	C	C	C	C	T	G	C	C	T	-	-	-	-	-	-	-	-	-	G	C	G	C	G	C	T	C	T	G	C	T	- 0.52% (302 reads)		
A	T	T	T	C	T	G	T	T	G	T	C	C	C	C	T	G	C	C	T	G	G	T	T	-	-	-	-	G	C	G	C	G	C	T	C	T	G	C	T	- 0.47% (273 reads)			
A	T	T	T	C	T	G	T	T	G	T	C	C	C	C	T	G	C	-	-	-	-	-	-	-	-	-	-	-	-	-	G	C	T	C	T	G	C	T	- 0.41% (235 reads)				
A	T	T	T	C	T	G	T	T	G	T	C	C	C	C	T	G	C	C	T	G	-	-	T	C	T	T	T	G	C	G	C	G	C	T	C	T	G	C	T	- 0.39% (226 reads)			
A	T	T	T	C	T	G	T	T	G	T	C	C	C	C	T	G	C	C	T	G	G	T	-	-	-	-	-	G	C	G	C	G	C	T	C	T	G	C	T	- 0.37% (215 reads)			
A	T	T	T	C	T	G	T	T	G	T	C	C	C	C	T	-	-	-	-	-	-	-	-	-	-	T	T	G	C	G	C	G	C	T	C	T	G	C	T	- 0.34% (199 reads)			
A	T	T	T	C	T	G	T	T	G	T	C	C	C	C	T	G	C	C	T	-	G	C	T	C	T	T	T	G	C	G	C	G	C	T	C	T	G	C	T	- 0.34% (195 reads)			
A	T	T	T	C	T	G	T	T	G	T	C	C	C	C	T	G	C	C	T	G	G	T	T	T	C	T	T	T	G	C	G	C	G	C	T	C	T	G	C	- 0.33% (188 reads)			
A	T	T	T	C	T	G	T	T	G	T	C	C	C	C	T	-	-	-	-	-	-	-	-	C	T	T	T	G	C	G	C	G	C	T	C	T	G	C	T	- 0.30% (174 reads)			
A	T	T	T	C	T	G	T	T	G	T	C	C	C	C	T	G	C	C	T	-	-	-	-	-	-	-	-	-	-	-	G	C	T	C	T	G	C	T	- 0.29% (169 reads)				
A	T	T	T	C	T	G	T	T	G	T	C	C	C	C	T	G	C	C	T	-	-	-	-	-	-	-	-	-	-	-	-	G	C	T	C	T	G	C	T	- 0.29% (165 reads)			
A	T	T	T	C	T	G	T	T	G	T	C	C	C	C	T	G	C	C	T	G	G	T	T	T	G	G	T	T	C	T	T	T	G	C	G	C	G	C	T	- 0.28% (161 reads)			
A	T	T	T	C	T	G	T	T	G	T	C	C	C	C	T	G	C	C	T	G	G	T	T	G	T	C	C	C	C	T	G	C	T	C	T	T	T	G	C	- 0.25% (143 reads)			
A	T	T	T	C	T	G	T	T	G	T	C	C	C	C	T	G	C	C	T	G	G	T	C	T	C	T	T	T	G	C	G	C	G	C	T	C	T	G	C	- 0.22% (129 reads)			
A	T	T	T	C	T	G	T	T	G	T	C	C	C	C	T	G	C	-	-	-	-	-	T	C	T	T	T	G	C	G	C	G	C	T	C	T	G	C	T	- 0.22% (126 reads)			

bold

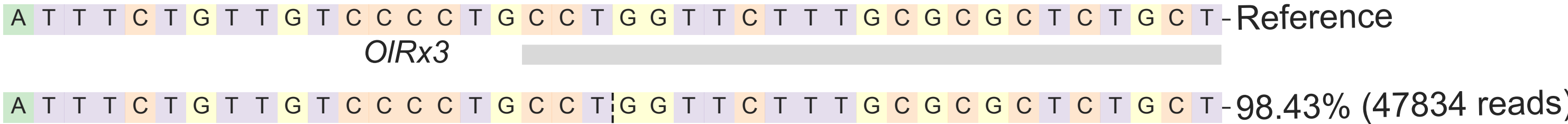
Substitutions

Insertions

-

Deletions

Predicted cleavage position



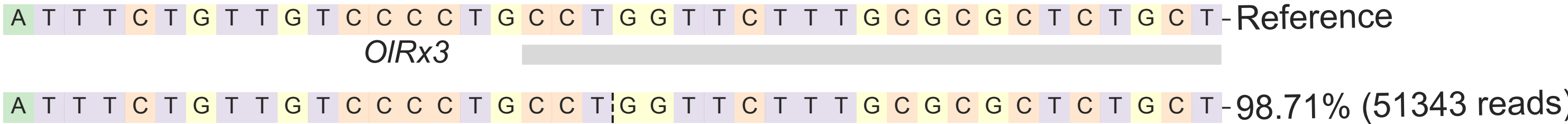
bold Substitutions

Insertions

- Deletions

----- Predicted cleavage position

uninjected pool1 *OIRx3*



bold Substitutions

Insertions

- Deletions

----- Predicted cleavage position

uninjected pool2 OIRx3

A T T T C T G T T G T C C C C T G C C T G G T T C T T T G C G C G C T C T G C T - Reference
OIRx3

A T T T C T G T T G T C C C C T G C C T **G** G T T C T T T G C G C G C T C T G C T - 98.35% (58453 reads)

bold Substitutions
 Insertions
- Deletions
----- Predicted cleavage position

uninjected pool3 *OIRx3*