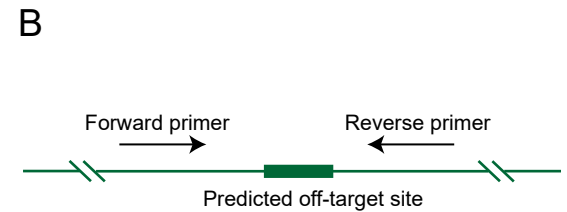
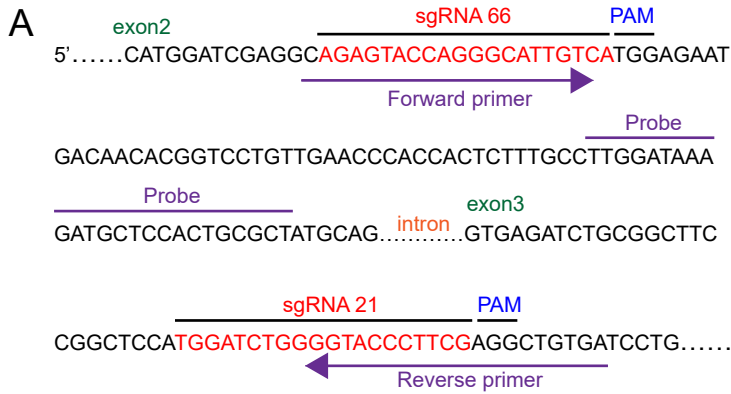


### Primer design strategy for *Clstn3* KO

### Primer design strategy for off-target effects



### Potential genome editing pattern

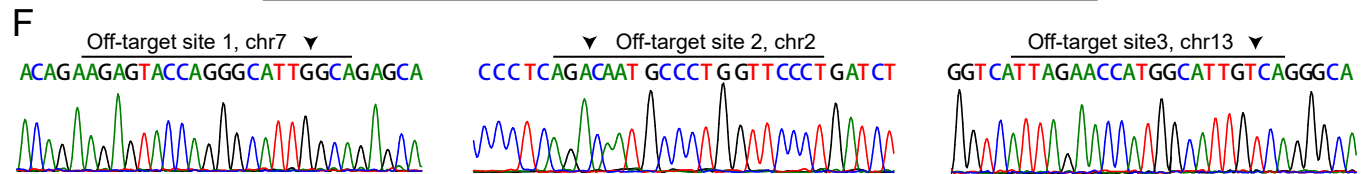


### Sg66 potential off-target effects

**E**

Sg66 predicted off-target sites

| No. | Chromosome | Strand | Position  | Pattern              | Type       |
|-----|------------|--------|-----------|----------------------|------------|
| 1   | chr7       | 1      | 143748794 | AGAGTACCAGGGCATTGCA  | Intergenic |
| 2   | chr2       | -1     | 167750018 | AGGAACCAGGGCATTGTCT  | Intergenic |
| 3   | chr13      | -1     | 34933982  | TTAGAACCATGGCATTGTCA | Intergenic |



### Sg21 potential off-target effects

**G**

Sg21 predicted off target sites

| No. | Chromosome | Strand | Position  | Pattern              | Type       |
|-----|------------|--------|-----------|----------------------|------------|
| 1   | chr17      | 1      | 26570165  | TGGATCTGGGCTACCCTTTG | Intergenic |
| 2   | chr5       | -1     | 119991690 | GGGAGCTGGTGTACCCTTCC | Intergenic |
| 3   | chr13      | 1      | 51347015  | AGGATCTAGAGTACCCTTCA | Intergenic |

