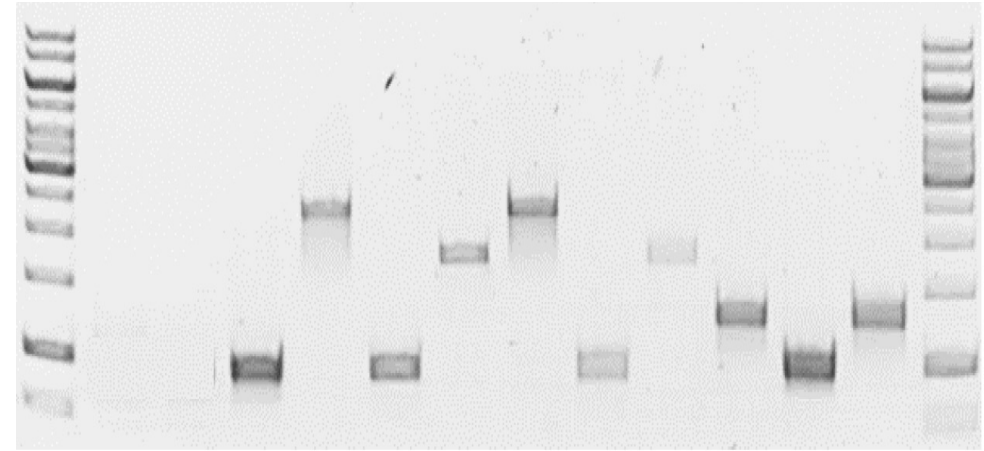
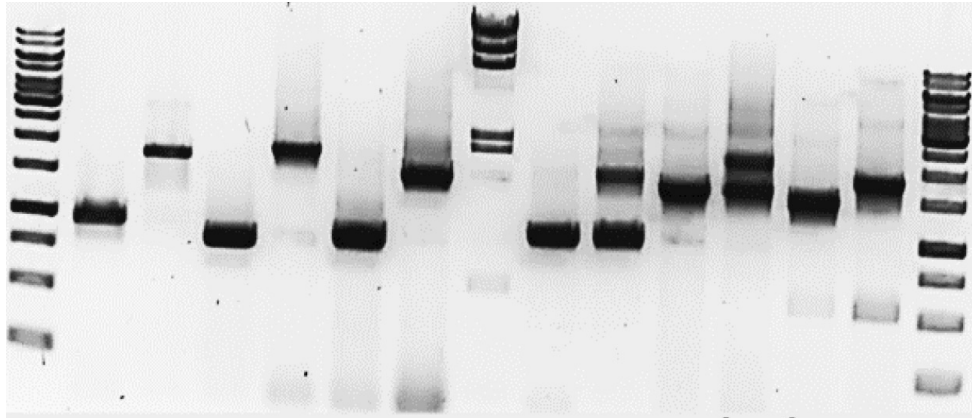
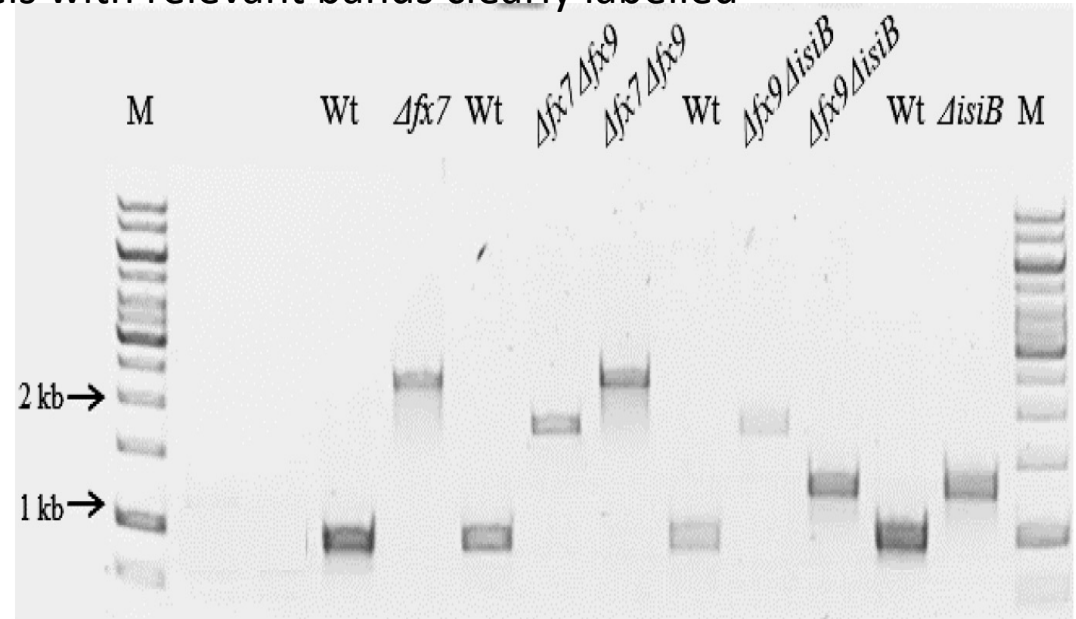
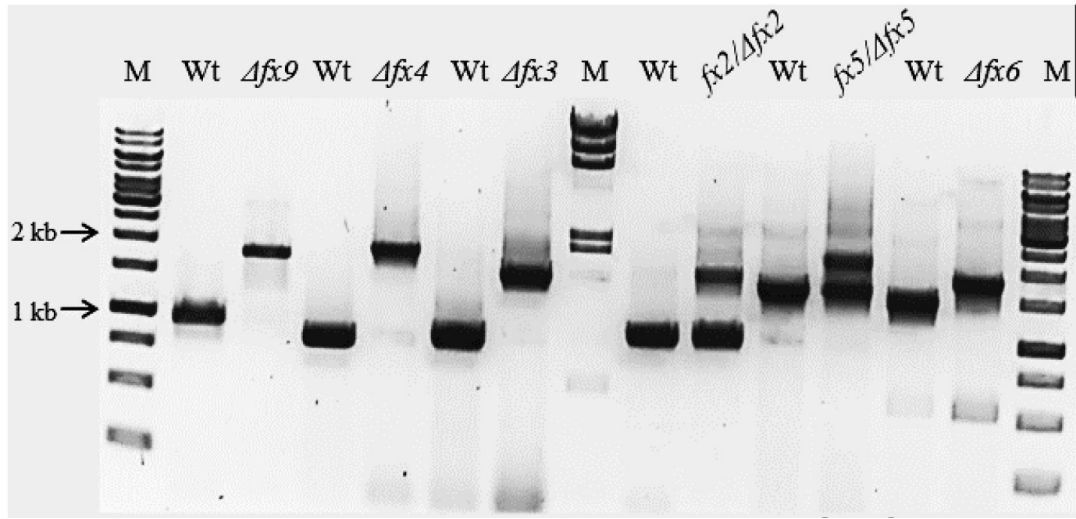


Figure 3 - figure supplement 1A - source data – 1 and 2

(1) Original files of full uncropped raw, unedited gels



(2) Original files of full uncropped raw, unedited gels with relevant bands clearly labelled



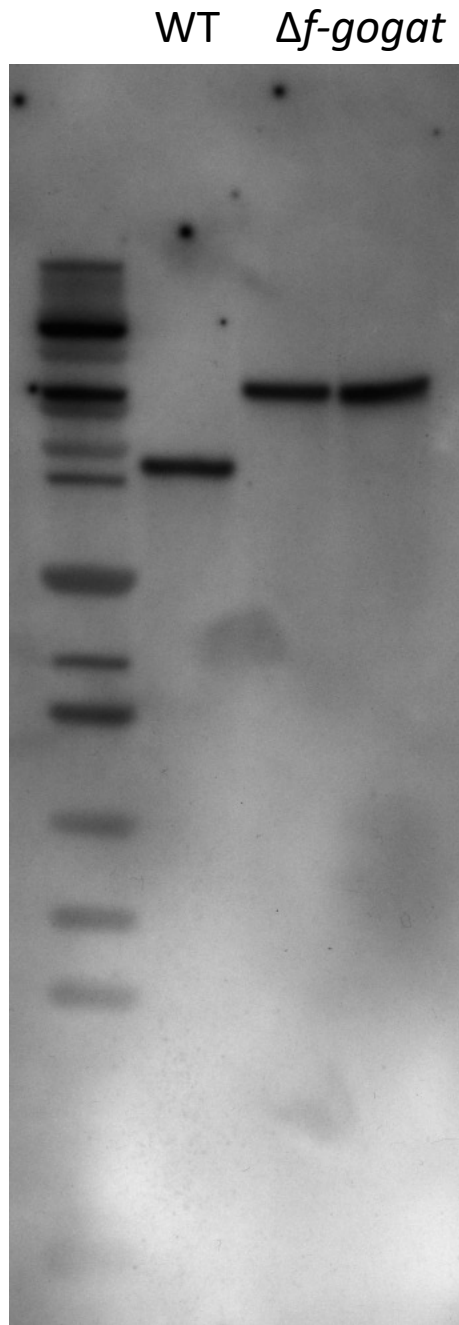
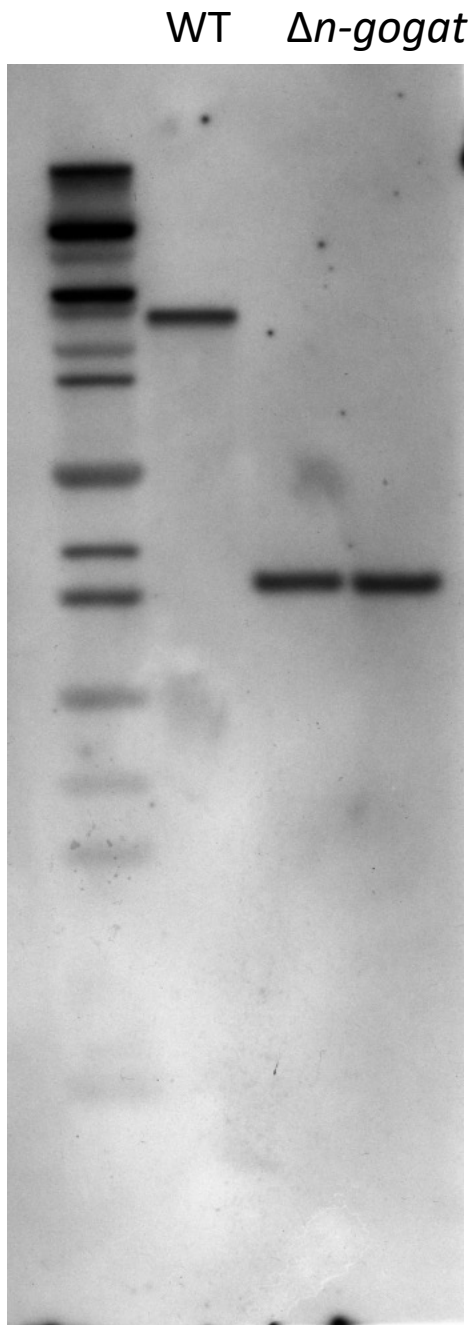


Figure 3 - figure supplement 1B - source data - 1

(1) Original files of full uncropped raw, unedited blots

Southern blot of WT, $\Delta n-gogat$, and $\Delta f-gogat$ deletion mutants. WT DNA and DNA from two different mutant clones were applied after HindIII digestion.

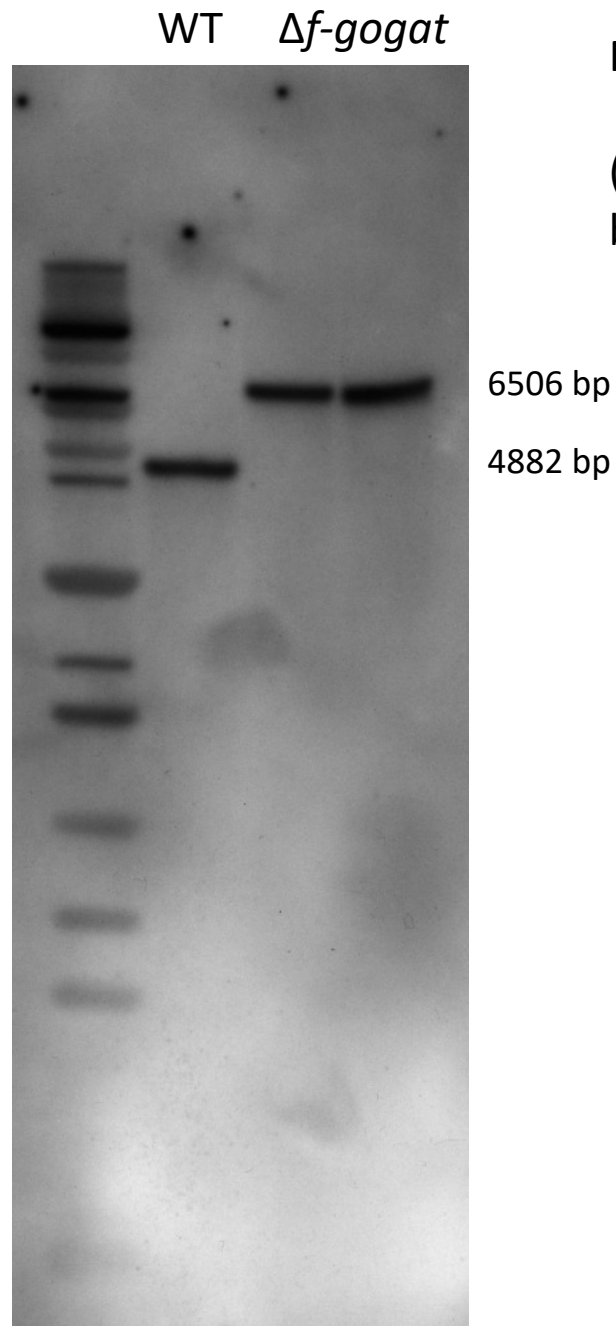
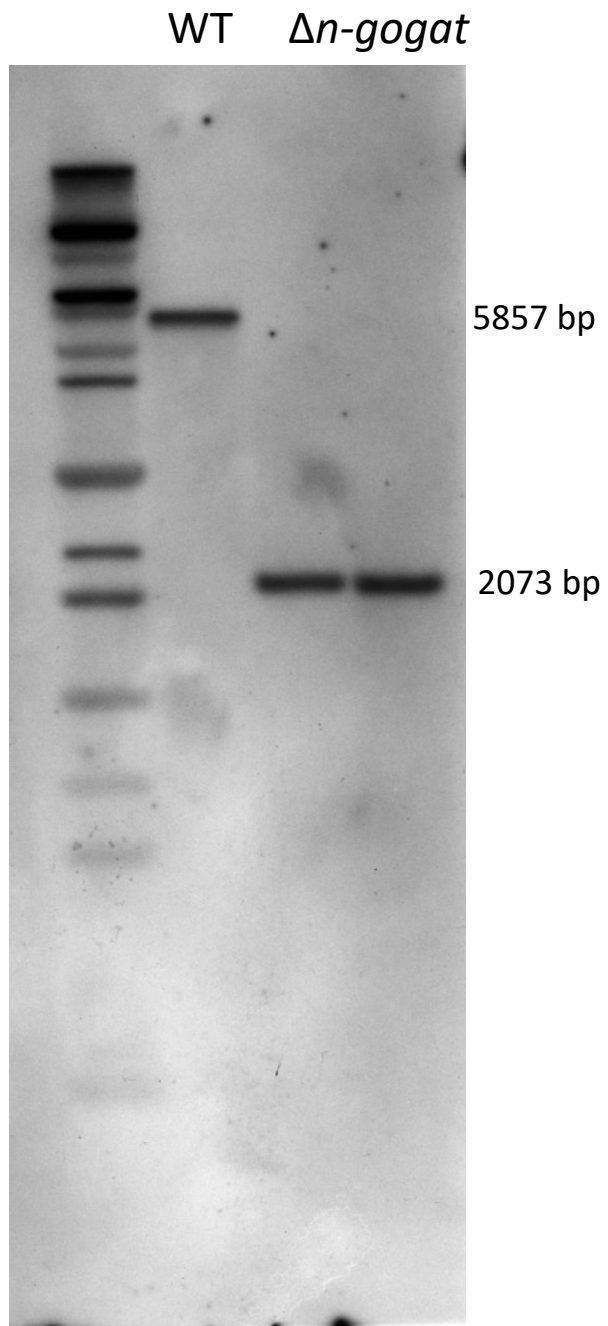


Figure 3 - figure supplement 1A - source data - 2

(2) Original files of full uncropped raw blots with relevant bands clearly labelled

Southern blot of WT, $\Delta n-gogat$, and $\Delta f-gogat$ deletion mutants. WT DNA and DNA from two different mutant clones were applied after HindIII digestion. The sizes of the bands are indicated and correspond to those expected due to the mutation.