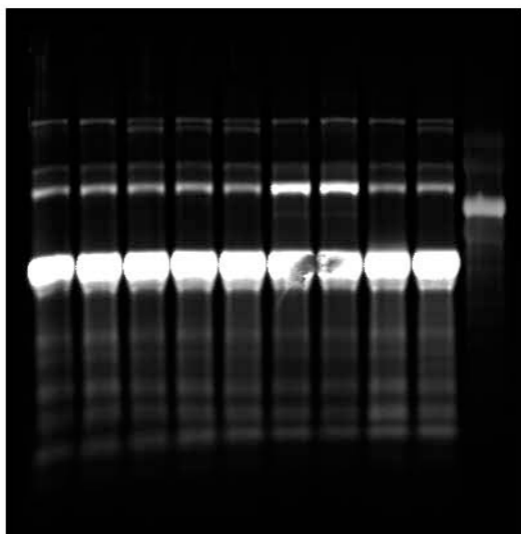


Figure 2 source data file 3
unedited northern
28S probe



labelled northern
28S probe

wild type
Xrp1^{+/-}
RpS3^{+/-}
RpS3^{+/-}; *Xrp1*^{+/-}
RpS3^{+/-}
RpL27A^{+/-}
RpL27A^{+/-}; *Xrp1*^{+/-}

