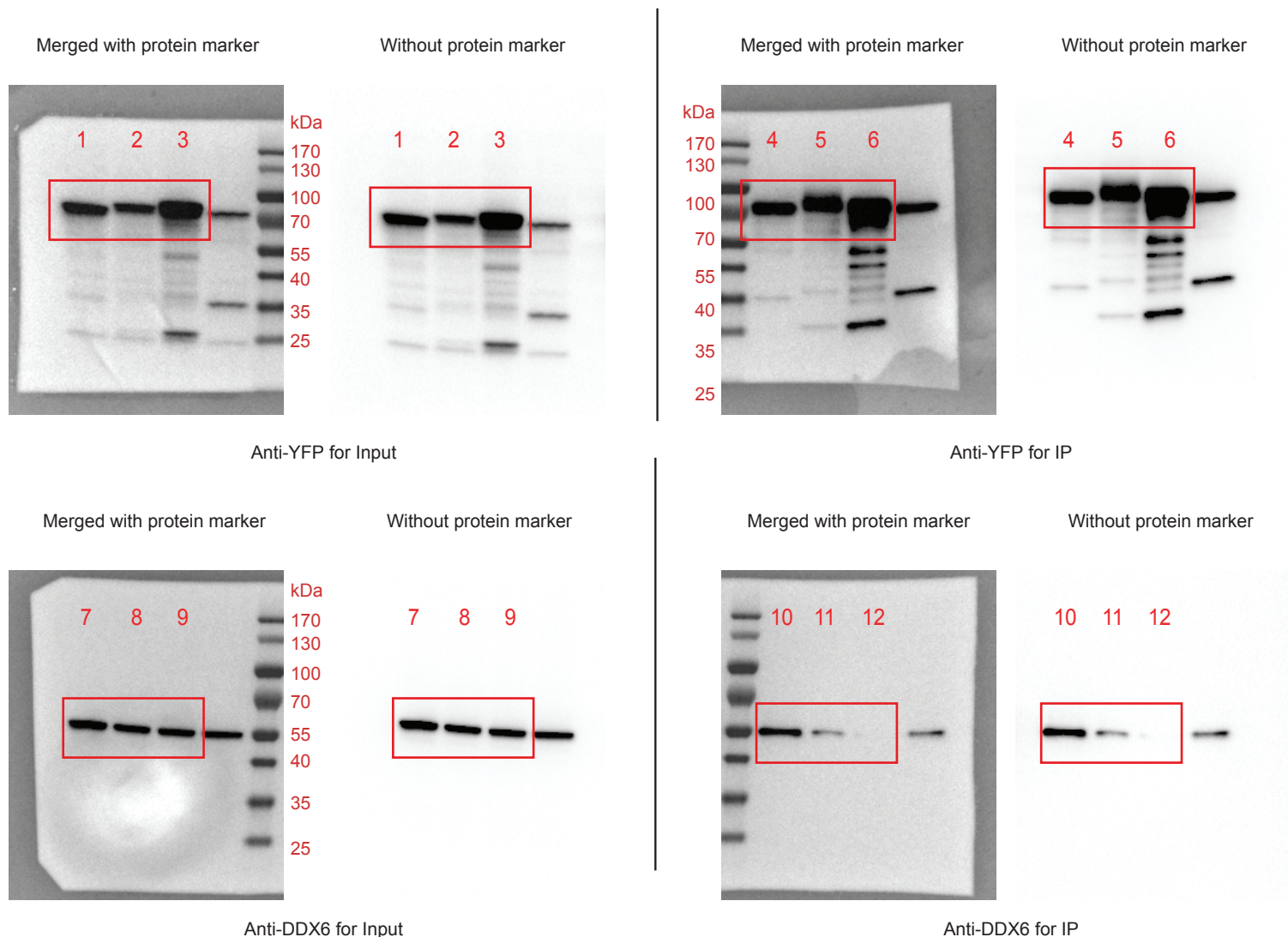


Figure 7H

uncropped blots



Lane 1: Δ YBX1, YFP-YBX1-WT, Input, anti-YFP
 Lane 2: Δ YBX1, YFP-YBX1-LCD-Y to S, Input, anti-YFP
 Lane 3: Δ YBX1, YFP-YBX1-LCD-RK to G, Input, anti-YFP
 Lane 4: Δ YBX1, YFP-YBX1-WT, IP, anti-YFP
 Lane 5: Δ YBX1, YFP-YBX1-LCD-Y to S, IP, anti-YFP
 Lane 6: Δ YBX1, YFP-YBX1-LCD-RK to G, IP, anti-YFP

Lane 7: Δ YBX1, YFP-YBX1-WT, Input, anti-DDX6
 Lane 8: Δ YBX1, YFP-YBX1-LCD-Y to S, Input, anti-DDX6
 Lane 9: Δ YBX1, YFP-YBX1-LCD-RK to G, Input, anti-DDX6
 Lane 10: Δ YBX1, YFP-YBX1-WT, IP, anti-DDX6
 Lane 11: Δ YBX1, YFP-YBX1-LCD-Y to S, IP, anti-DDX6
 Lane 12: Δ YBX1, YFP-YBX1-LCD-RK to G, IP, anti-DDX6

Lanes 1-12 were used in Fig 7H.

H

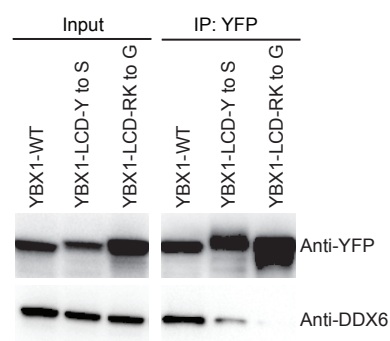


Figure 7H. Residues in YBX1-IDR that drive LLPS are required for its interaction with DDX6.