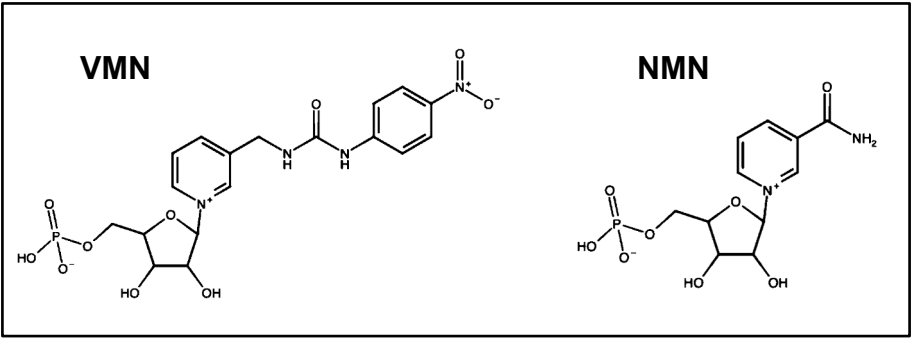
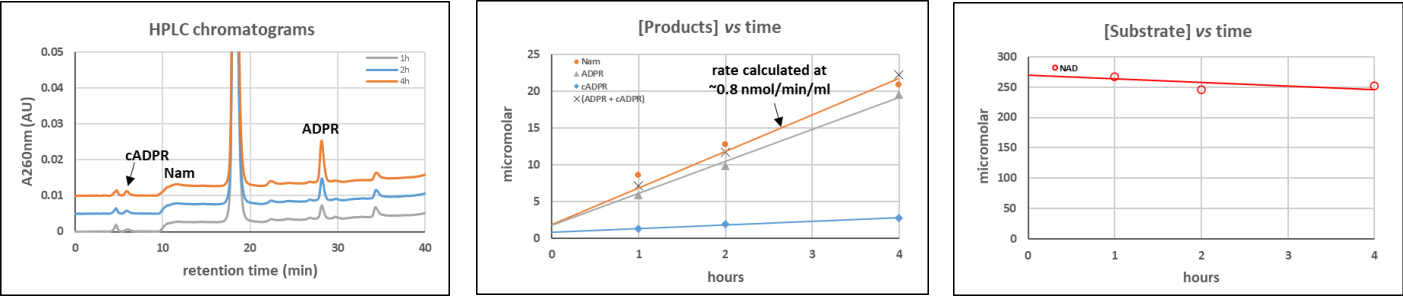


A

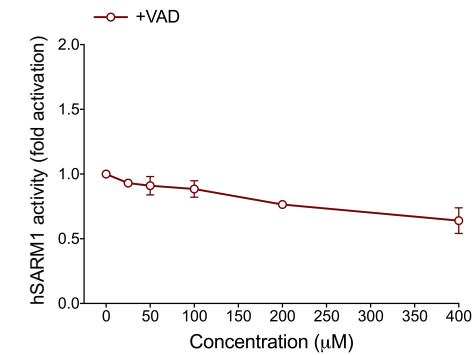


B

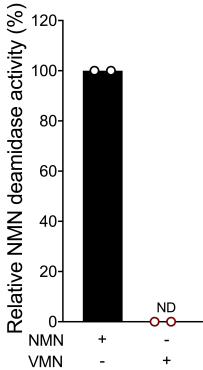
Basal hSARM1 NADase rate



C



D



E

| 4 hours after Vacor addition |                 |                 |
|------------------------------|-----------------|-----------------|
|                              | DRG ganglia     | DRG neurites    |
|                              | pmol/µg protein | pmol/µg protein |
| Vacor                        | 2.25            | 1.09            |
| VMN                          | 0.17            | 0.02            |
| VAD                          | 0.16            | 0.03            |