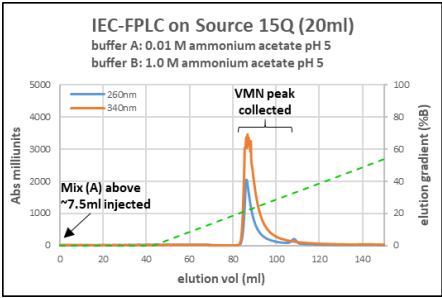


B

	Mix (A) for VMN		Mix (A+B) for VAD	
	ml	final []	ml	final []
H ₂ O	12.8	-	12.2	
HEPES/NaOH 1 M, pH 7.5	0.75	50 mM	0.75	50 mM
MgCl ₂ 1 M	0.30	20 mM	0.30	20 mM
ATP 100 mM	0.15	1 mM	0.30	2 mM
PRPP 50 mM	0.15	0.5 mM	0.15	0.5 mM
Vacor 9 mM	0.50	0.3 mM	0.50	0.3 mM
<u>mNAMPT wild type ~0.25 U/ml</u>	0.35 (*)	<u>~6 mU/ml</u>	0.35 (*)	~0.006 U/ml
<u>mNMNAT2 wild type ~2.5 U/ml</u>	-	-	0.44 (*)	~0.075 U/ml
<u>Yeast PPase Sigma >2 KU/ml</u>	-	-	0.01	>1.33 U/ml
Final mix	15 ml		15 ml	
Incubation settings	2-3 hr at 37 °C		Overnight (~19 hr) at 30 °C	

(*) Reagent(s) added to start the reactions.

C



D

