

Figure 3- figure supplement 1

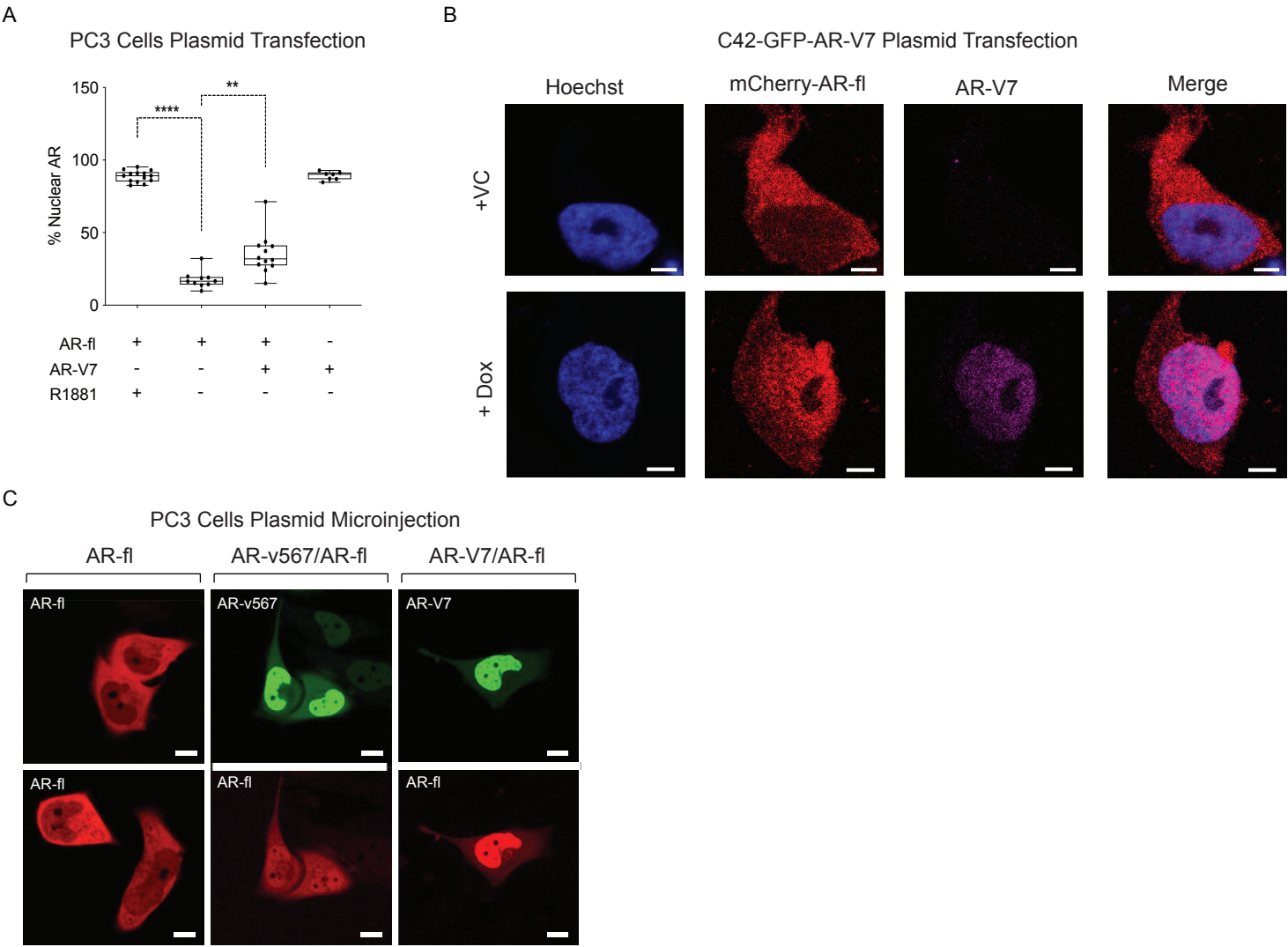


Figure 3- figure supplement 1. AR variants enhance nuclear localization of AR-fl in the absence of ligand. A. In a separate experiment, PC3 cells were transfected with plasmids encoding mCherry-AR-fl and/or GFP-AR-V7. % Nuclear AR-fl is graphically represented (n~7-14 cells/condition). Data represent Mean \pm SEM with n>10 cells per condition, p-value (**p< 0.01, ****p<0.0001) was obtained using unpaired two-tailed t-test. **B.** C4-2 cells stably expressing inducible GFP-AR-V7 were transfected with mCherry-AR-fl. Cells were fixed and immunostained with rabbit monoclonal anti-AR-V7 (RevMab) and mouse monoclonal anti-mCherry. Nuclei are counterstained with Hoechst. Representative images of each condition are shown. Experiments were repeated at least twice. **C.** Plasmids encoding mCherry-AR-fl, GFP-AR-V7, or GFP-AR-v567 were microinjected in PC3 cells. Representative images are shown. Scale bar, 10 μ m.