

Figure 5- figure supplement 1

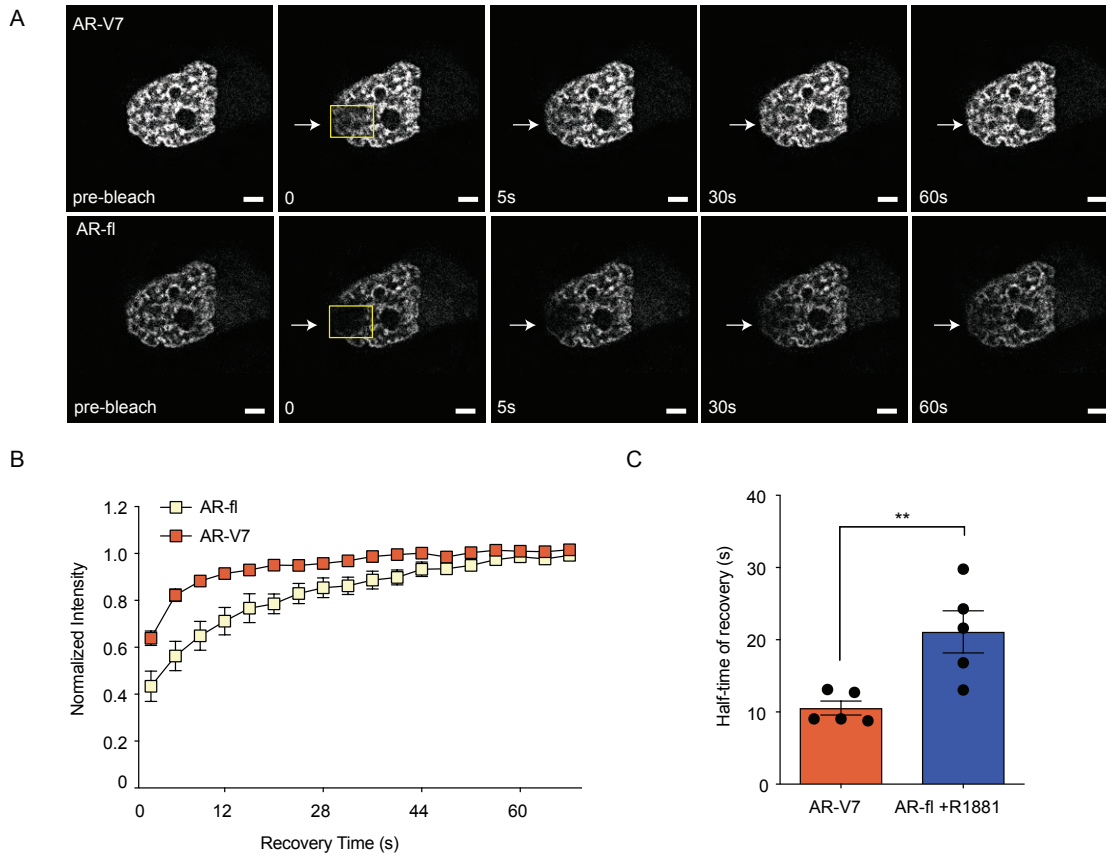


Figure 5- figure supplement 1. AR-V7 intranuclear mobility is not affected by co-expression of ligand-bound AR-fl. **A.** FRAP was performed in PC3 cells co-microinjected with mCherry-AR-fl and GFP-AR-V7 followed by treatment with 10 nM R1881 for 2hrs. Representative images from the same single cell co-expressing the two AR proteins are shown. **B.** Kinetics of protein recovery after photobleaching for each protein, when co-expressed in the same single cell, are graphically displayed. The fluorescence intensity in the bleached area was measured and depicted as the normalized recovery. **C.** Half-time of recovery ($T_{1/2}$) required for the fluorescence intensity to reach 50% of its pre-bleach intensity was compared, $n=5$. Data represent Mean \pm SEM, p -value (** $p < 0.01$) is obtained using unpaired two-tailed t -test. Experiments were repeated at least twice.