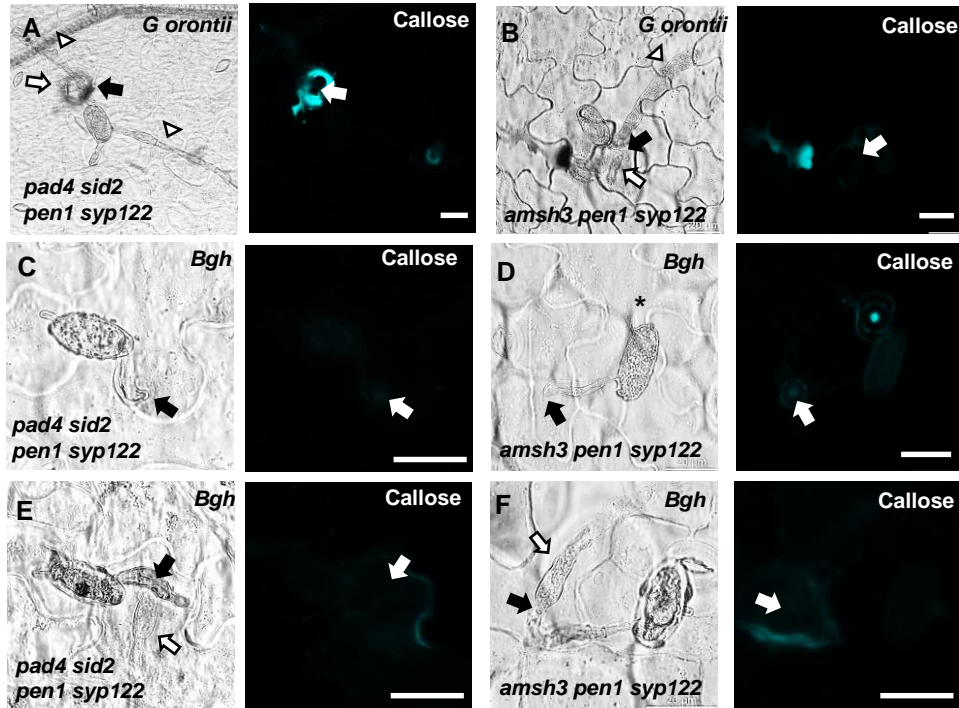


## Figure 4-figure supplement 2



**Figure 4-figure supplement 2. PEN1/SYP122 are required for papilla and encasement responses to *Bgh*.** (A-F) Accumulation of callose in response to (A-B) *G. orontii*- and (C-F) *Bgh* (48 hours) attack at (C-D) non-penetrated and (A-B, E-F) penetrated attack sites (arrows). Open arrows point to the developing IPS. Open-arrows and arrow heads point to the developing IPS and secondary hyphae, respectively. Bars = 20  $\mu$ m.