

Figure 7-figure supplement 1

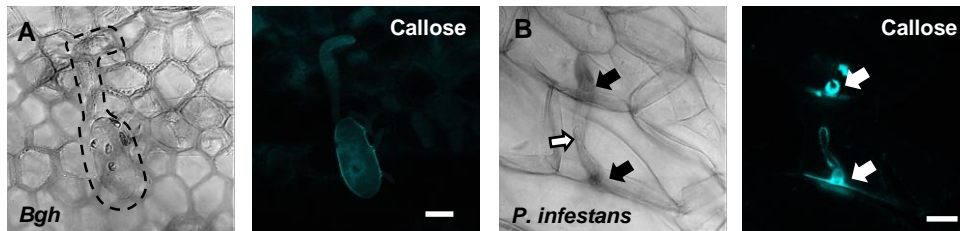


Figure 7-figure supplement 1. Responses in *Marchantia polymorpha* to filamentous pathogens. (A) On *M. polymorpha*, spores from *Bgh* (dotted line) were mis-differentiated with no or wrongly orientated appressoria that did not attack the host-cell. (B) Accumulation of callose in *M. polymorpha* in response to attack by *P. infestans* (arrows) in penetrated cells. Open arrow points to the developing IPS. Note that the frequency of *P. infestans* spores that attack a host-cell is very low. Bars=10 μ m.