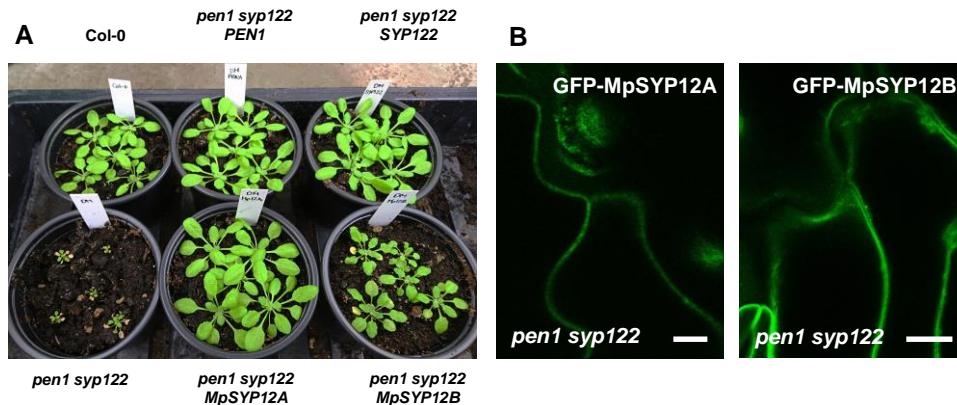


## Figure 8-figure supplement 1



**Figure 8-figure supplement 1. *Marchantia* syntaxins are functional in *Arabidopsis*.** (A) Plants at five weeks, expressing SYP12 clade members from either *Arabidopsis* or *Marchantia polymorpha*. (B) Localization of *Marchantia* SYP12 clade members in the epidermis of leaves from plants of four weeks. Bars=10 μm.