

Figure 5—source data 1: Images of all analyzed perforated PSD95 assemblies

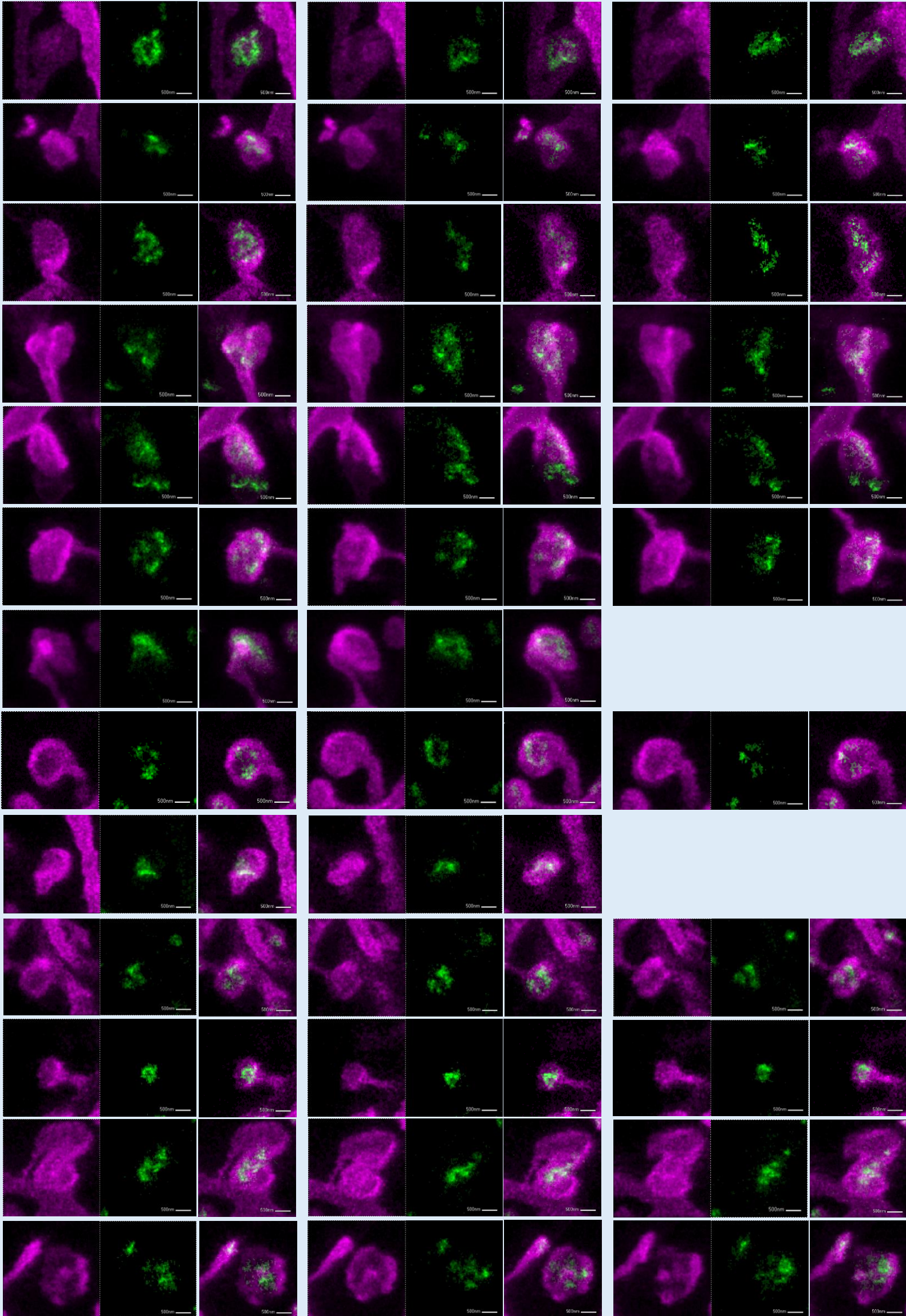
Sections of STED time-lapse images of spines (magenta) and PSD95 assemblies (green) utilized for the analysis of the PSD95 nanopattern. (A) EE housed mice and (B) Ctr housed mice. Maximum intensity projection (MIP). Scale bar: 500 μm .

A1 - EE

0 min

30 min

60 min

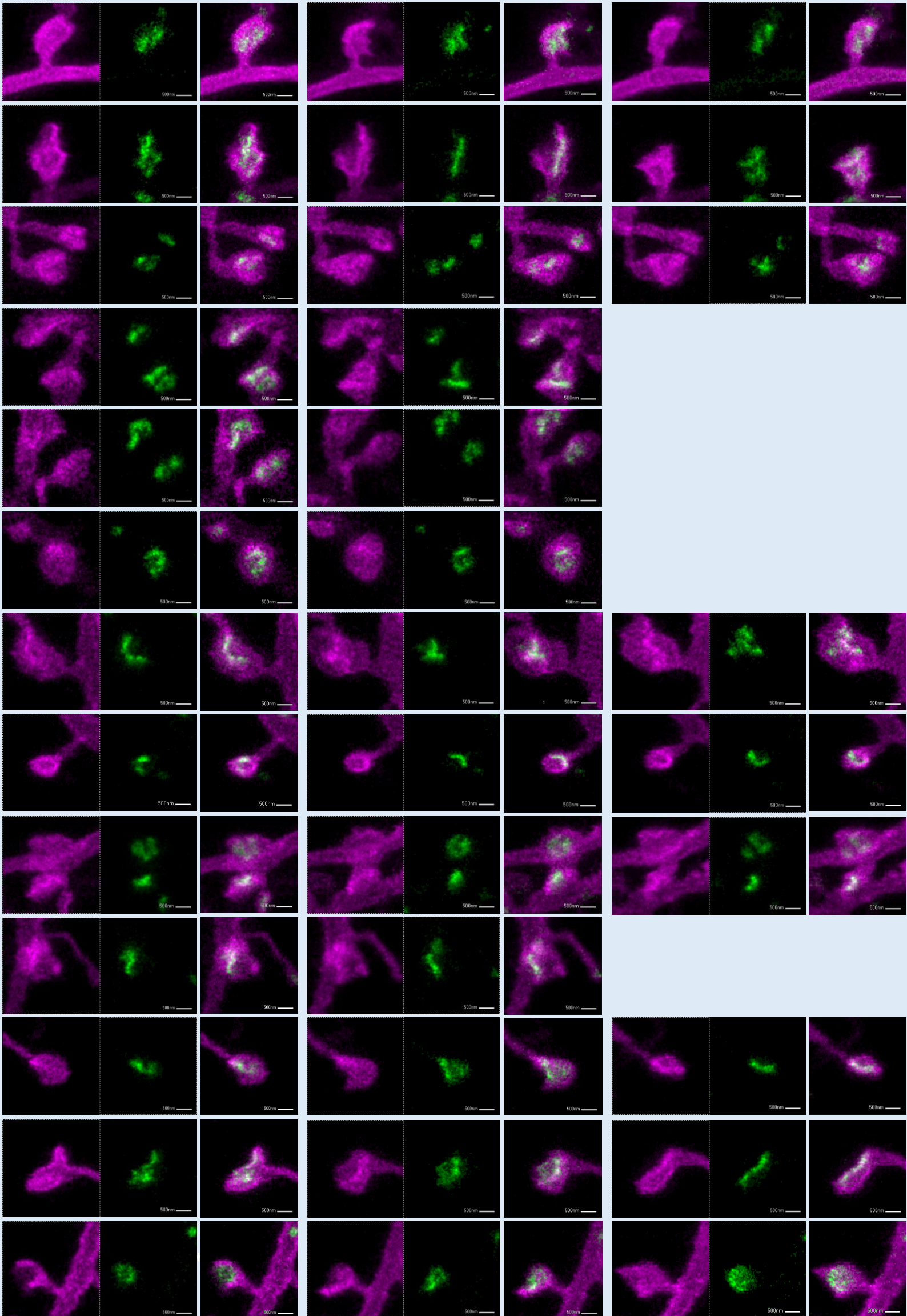


A2 - EE

0 min

30 min

60 min

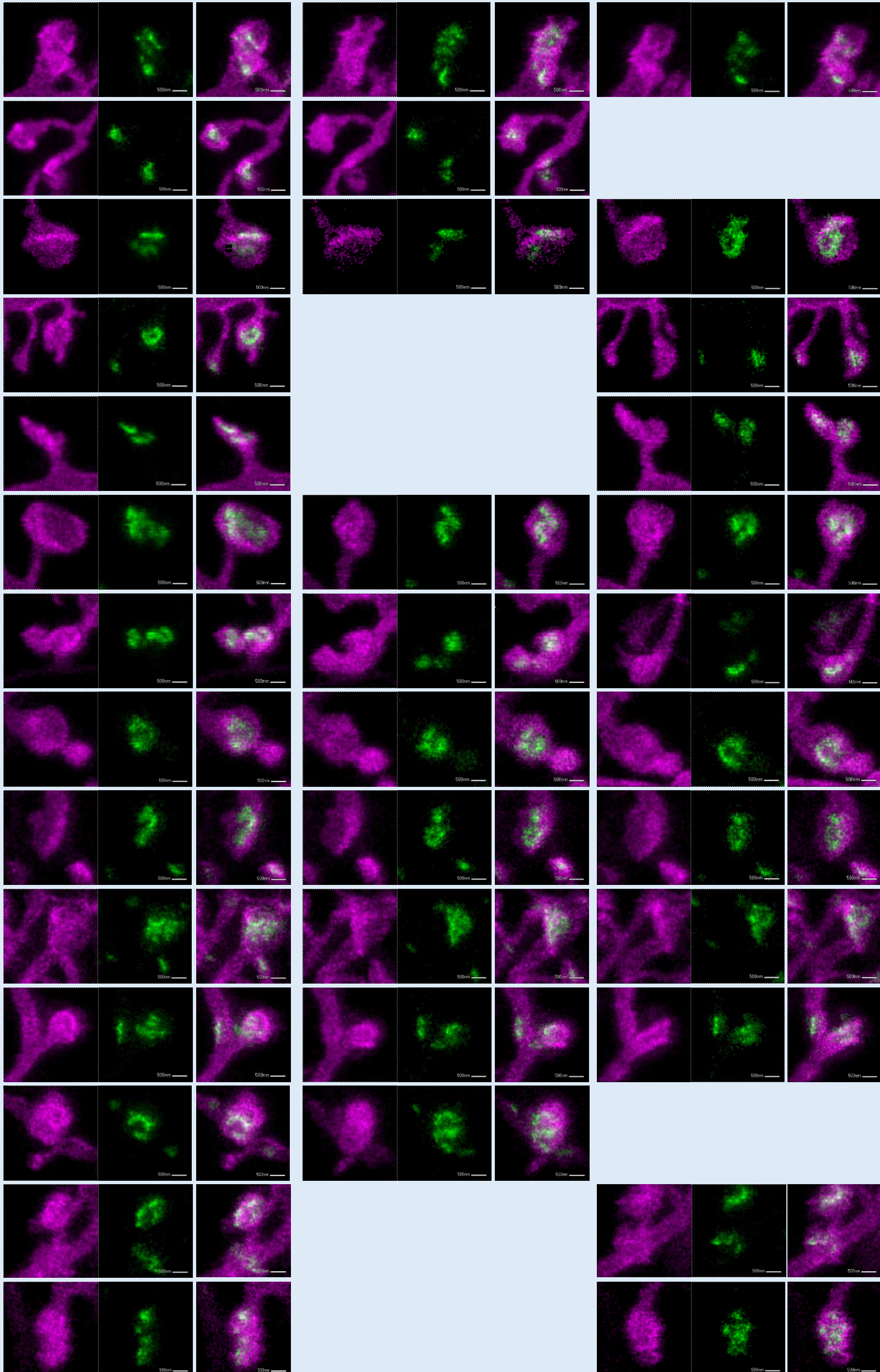


A3 - EE

0 min

30 min

60 min

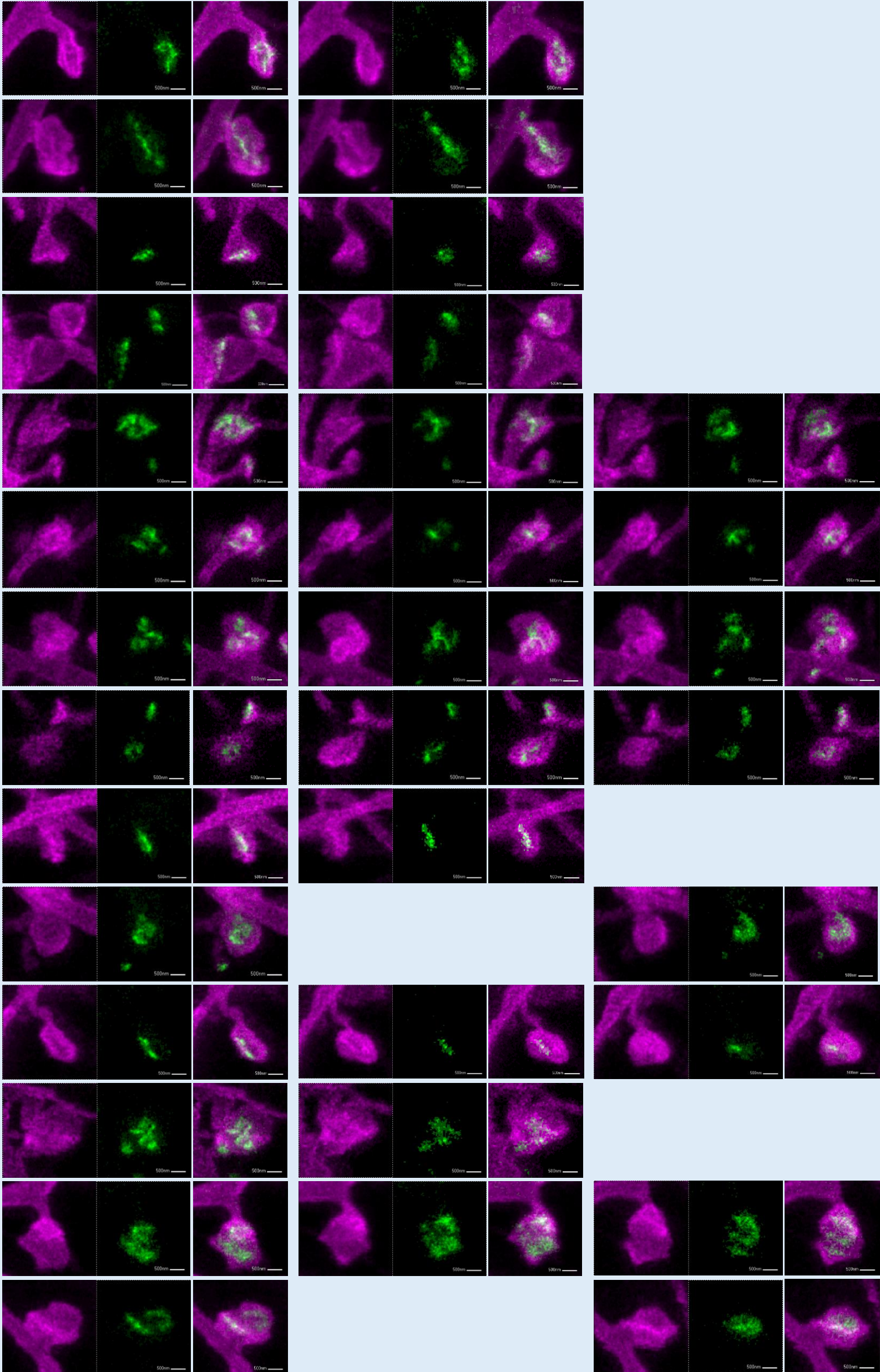


A4 - EE

0 min

60 min

120 min

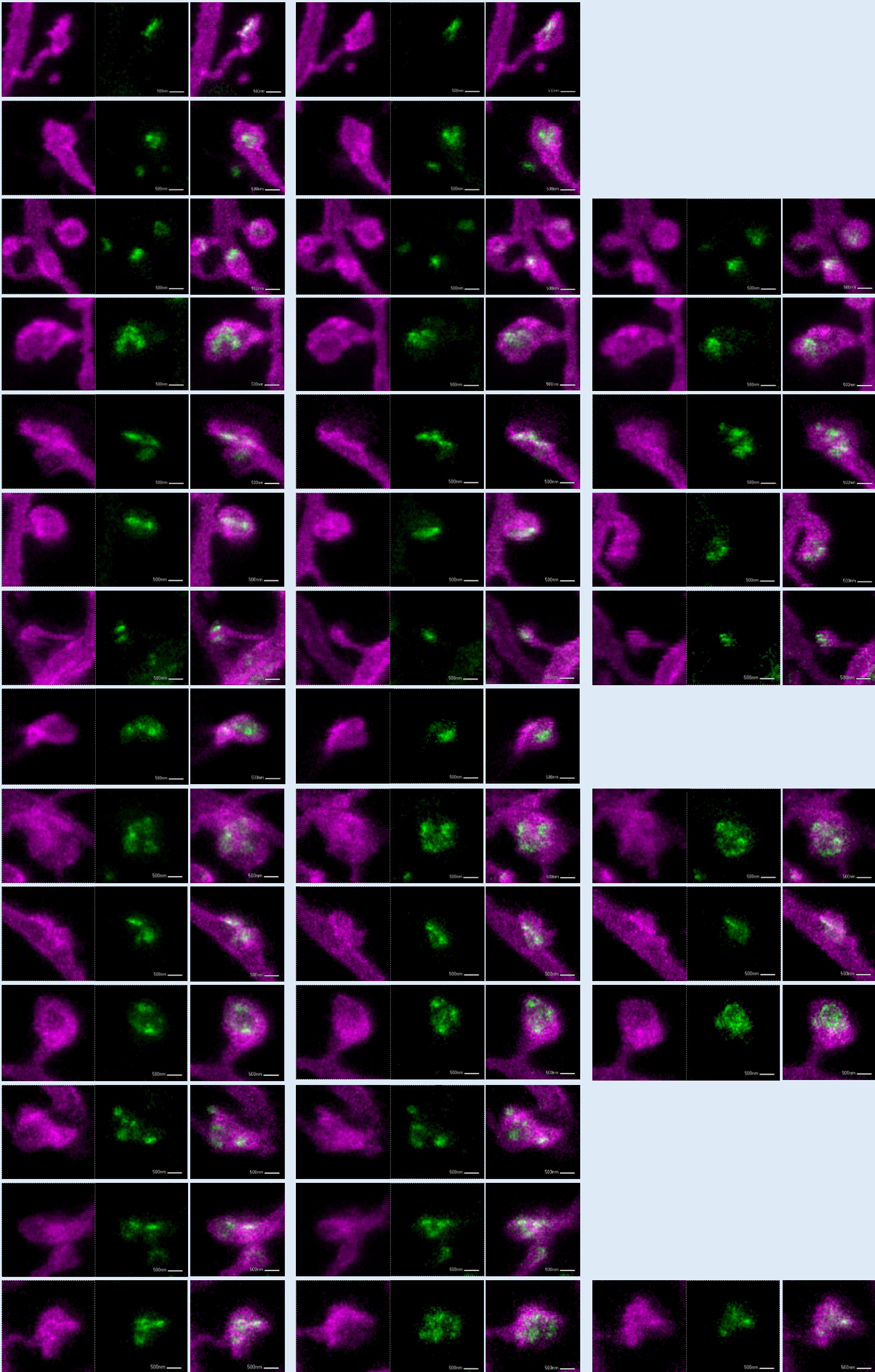


A5 - EE

0 min

60 min

120 min

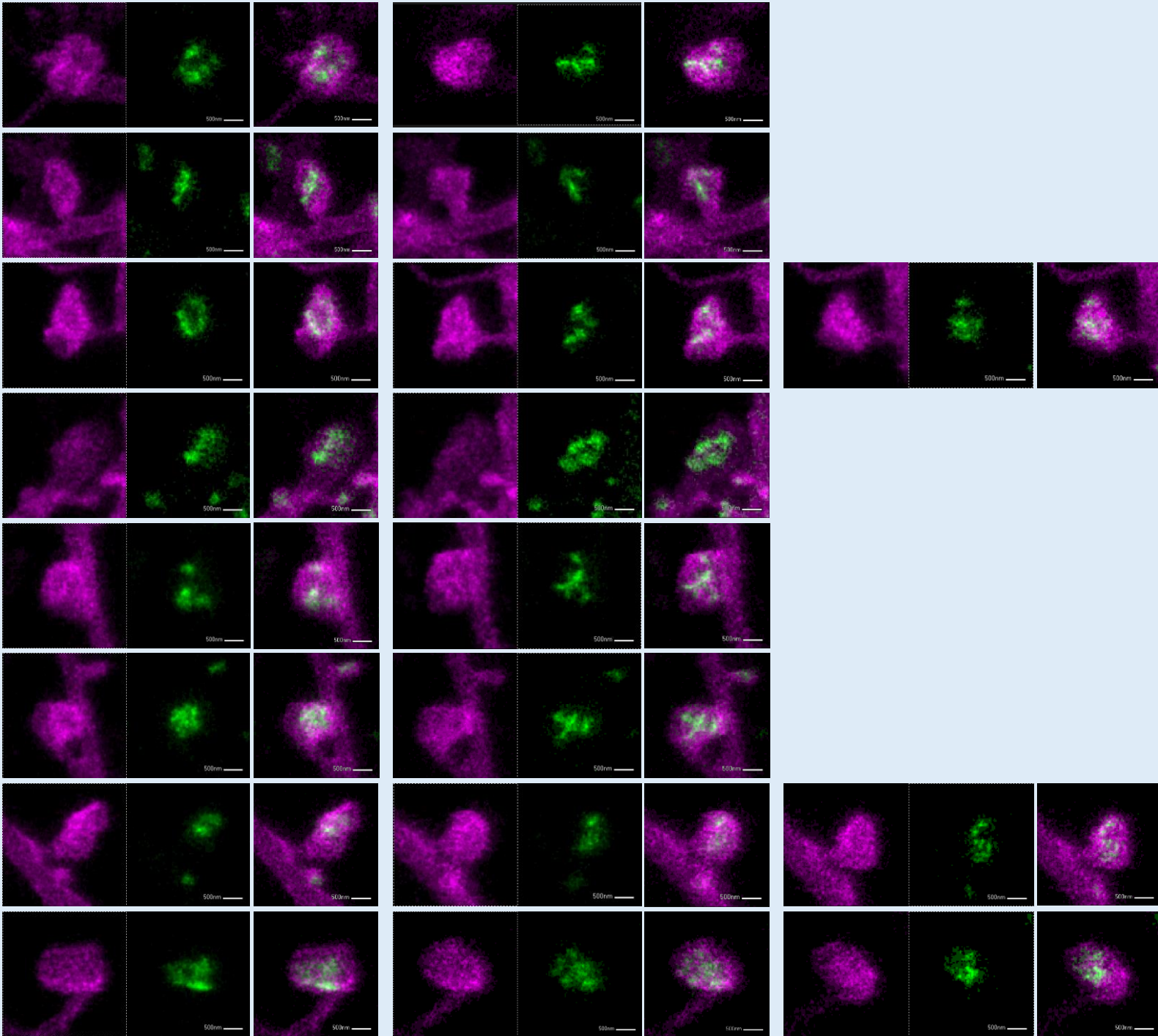


A6 - EE

0 min

60 min

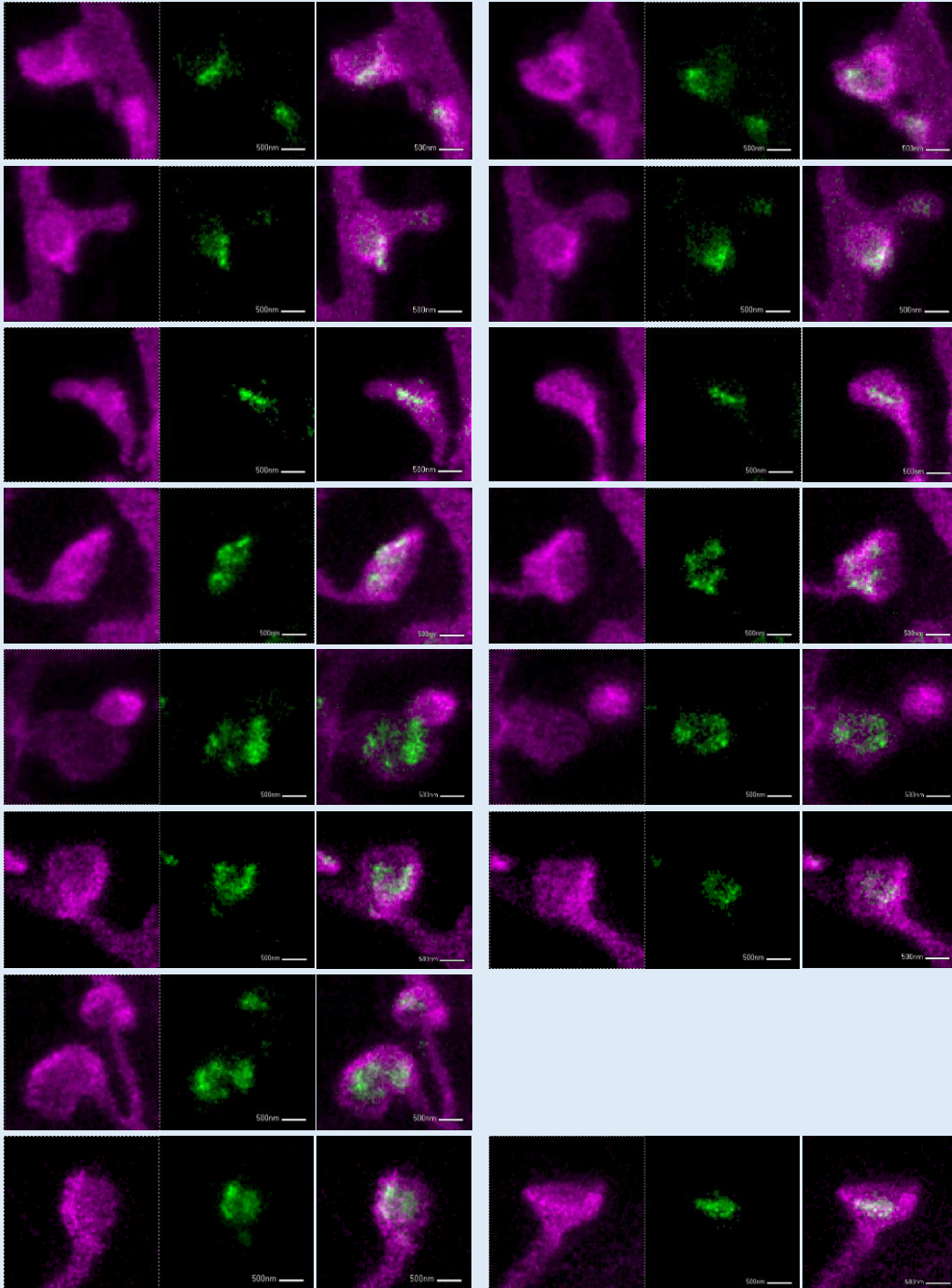
120 min



A7 - EE

0 min

120 min

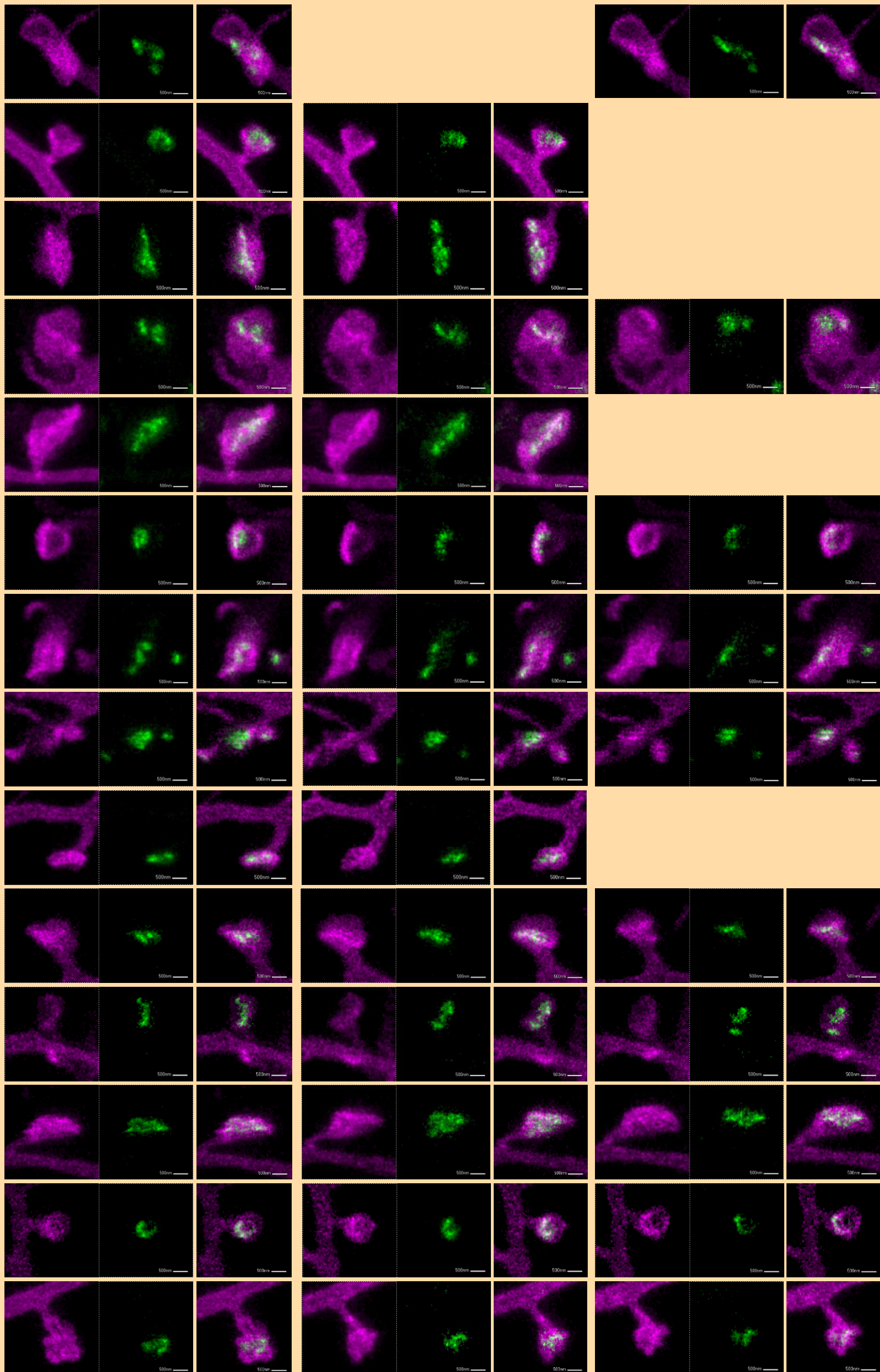


B1 - Ctr

0 min

30 min

60 min

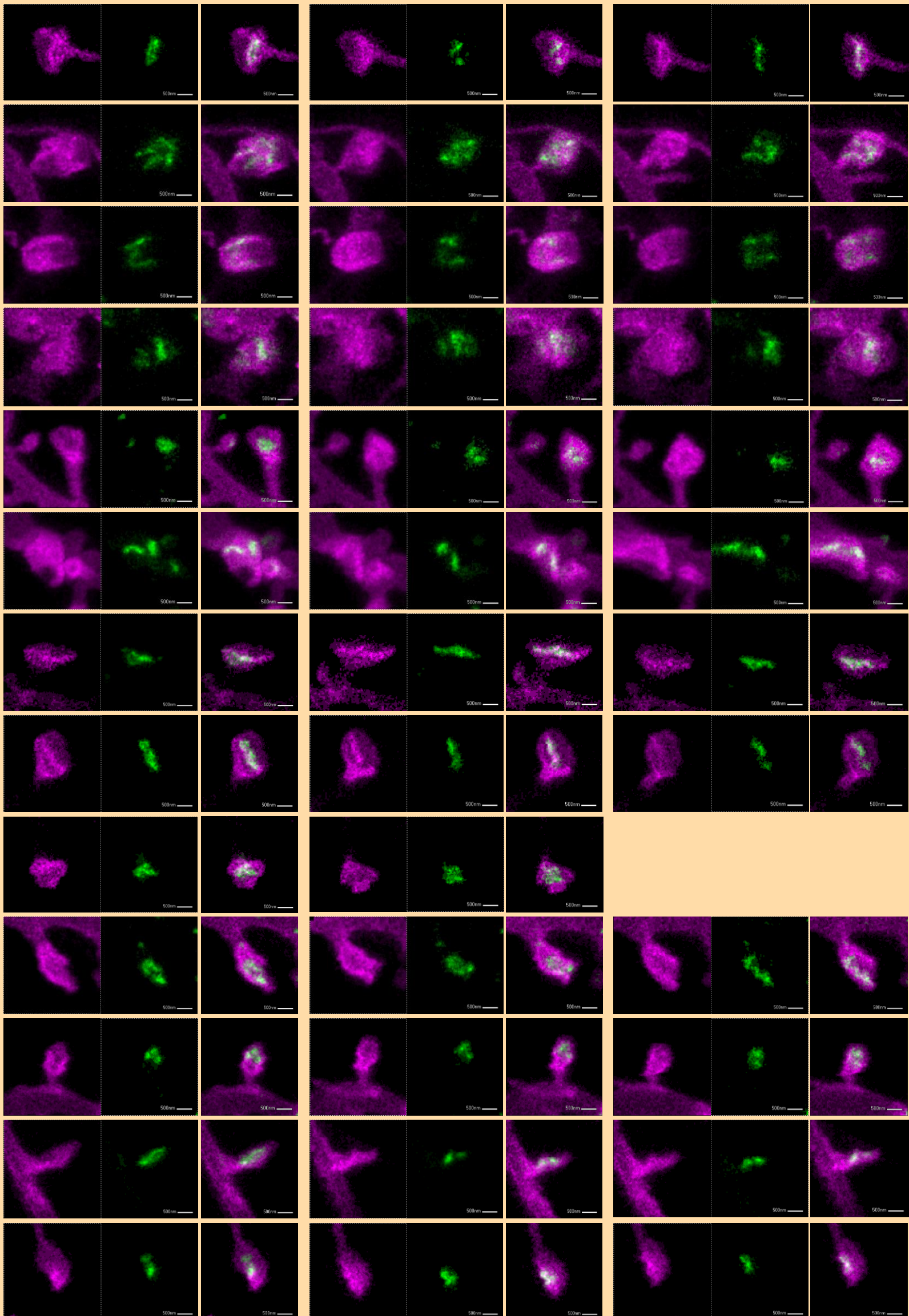


B2 - Ctr

0 min

30 min

60 min

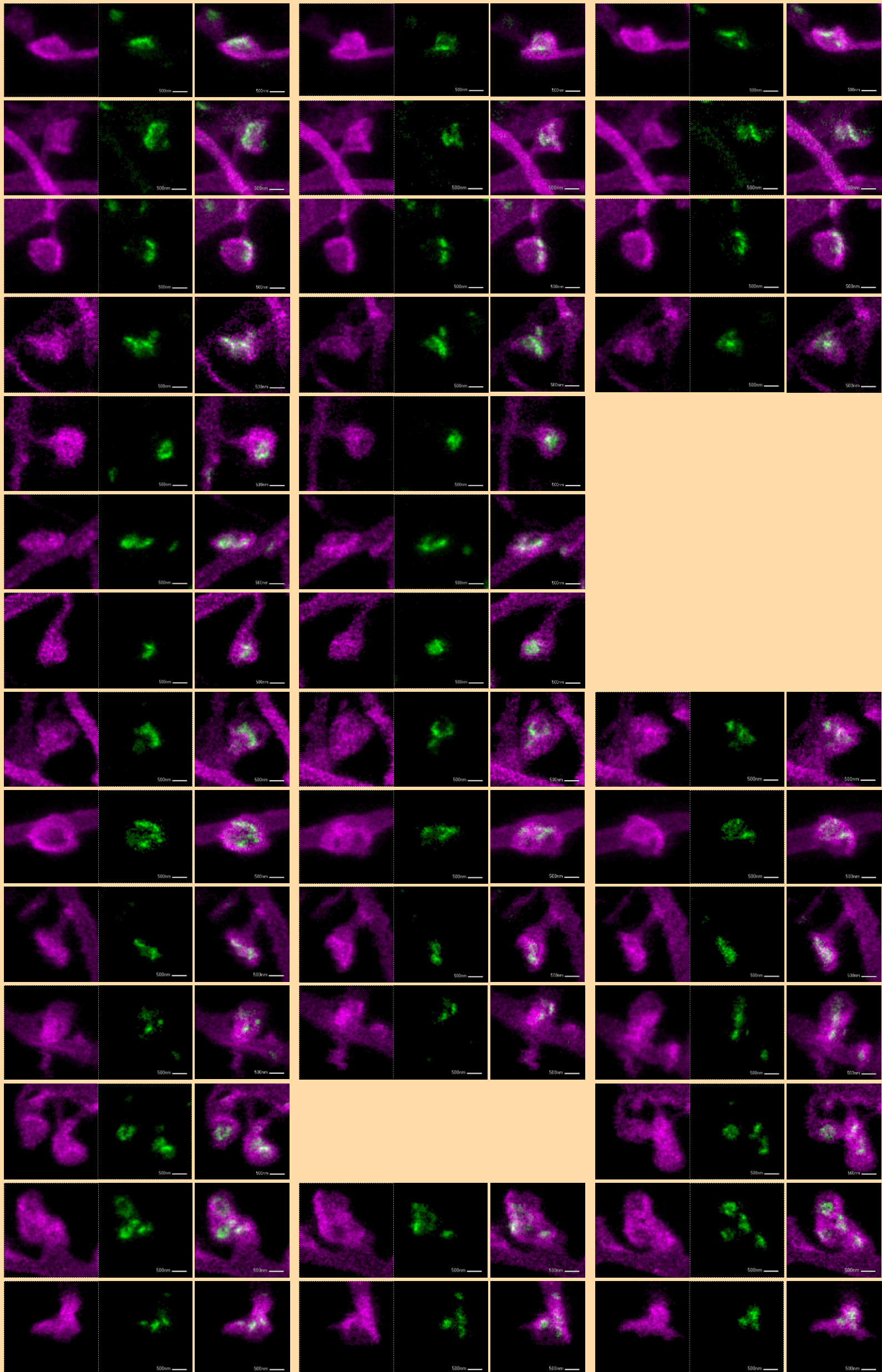


B4 - Ctr

0 min

60 min

120 min

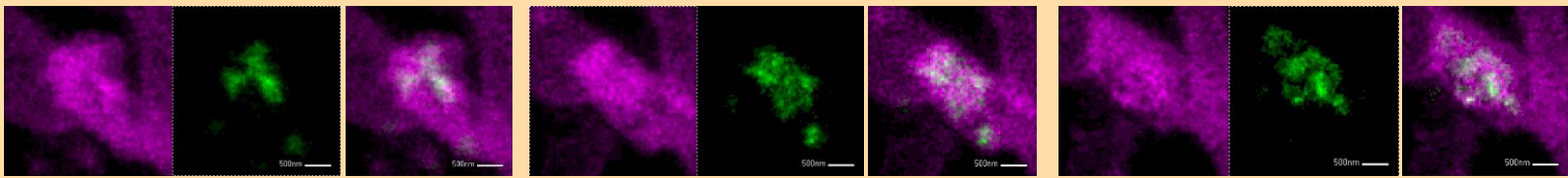


B5 - Ctr

0 min

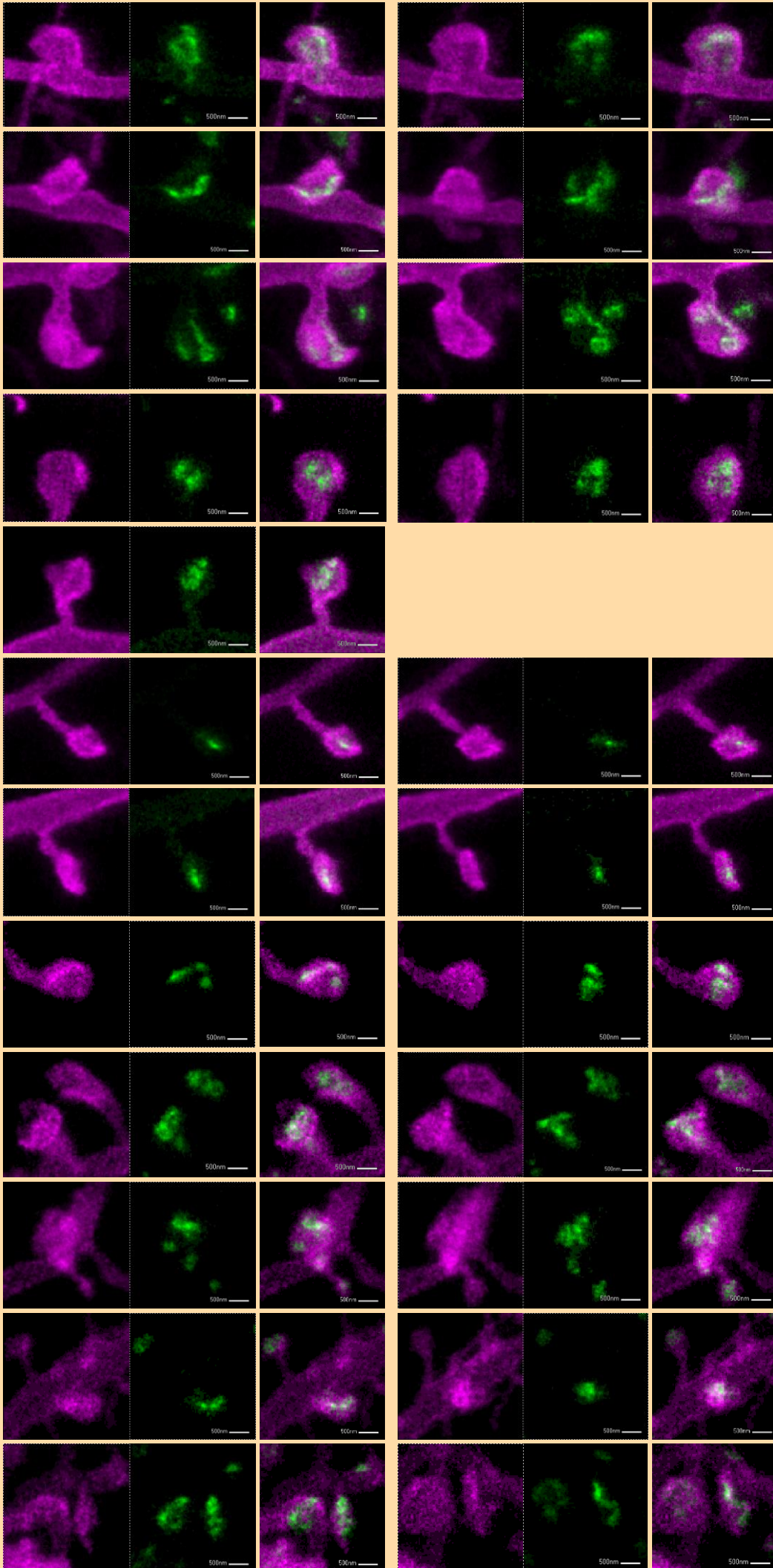
60 min

120 min



0 min

120 min



B6 - Ctr

0 min

120 min

