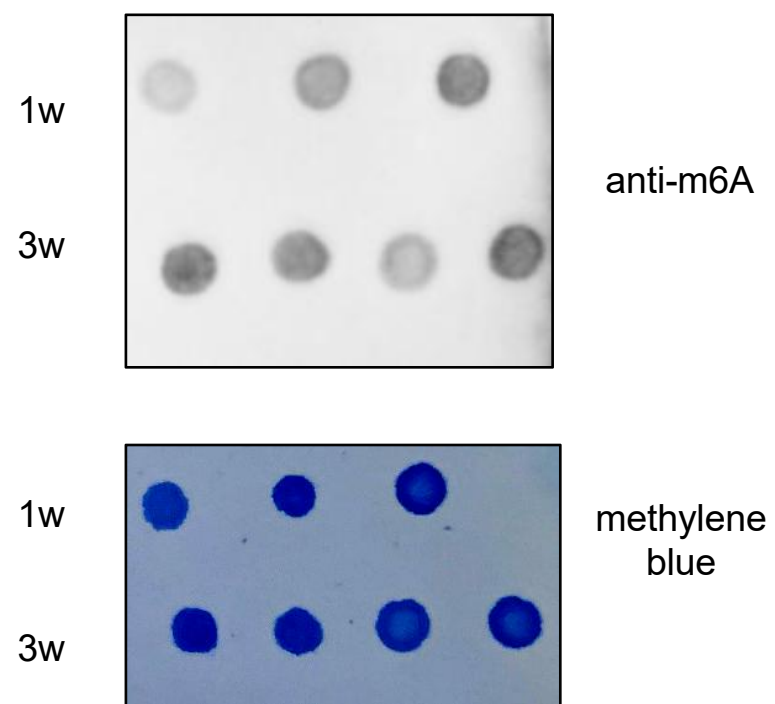
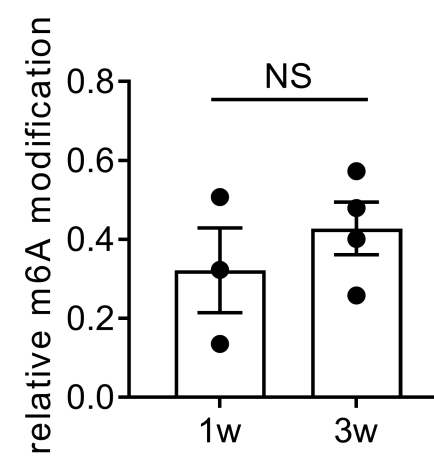


**a****b**

**Figure 1-figure supplement 2. Dot blot analysis of total RNA m6A modification level in the ileum of germ free mice.**

(a) m6A dot blot analysis of total RNA in ileum tissues from germ free mice with different ages. Methylene blue (MB) staining was the loading control.

(b) Quantitative analysis of (a) (mean  $\pm$  SEM), statistical significance was determined by Student's t-test ( NS., not significant).

The quantitative m6A signals were normalized to quantitative MB staining signals.