

a

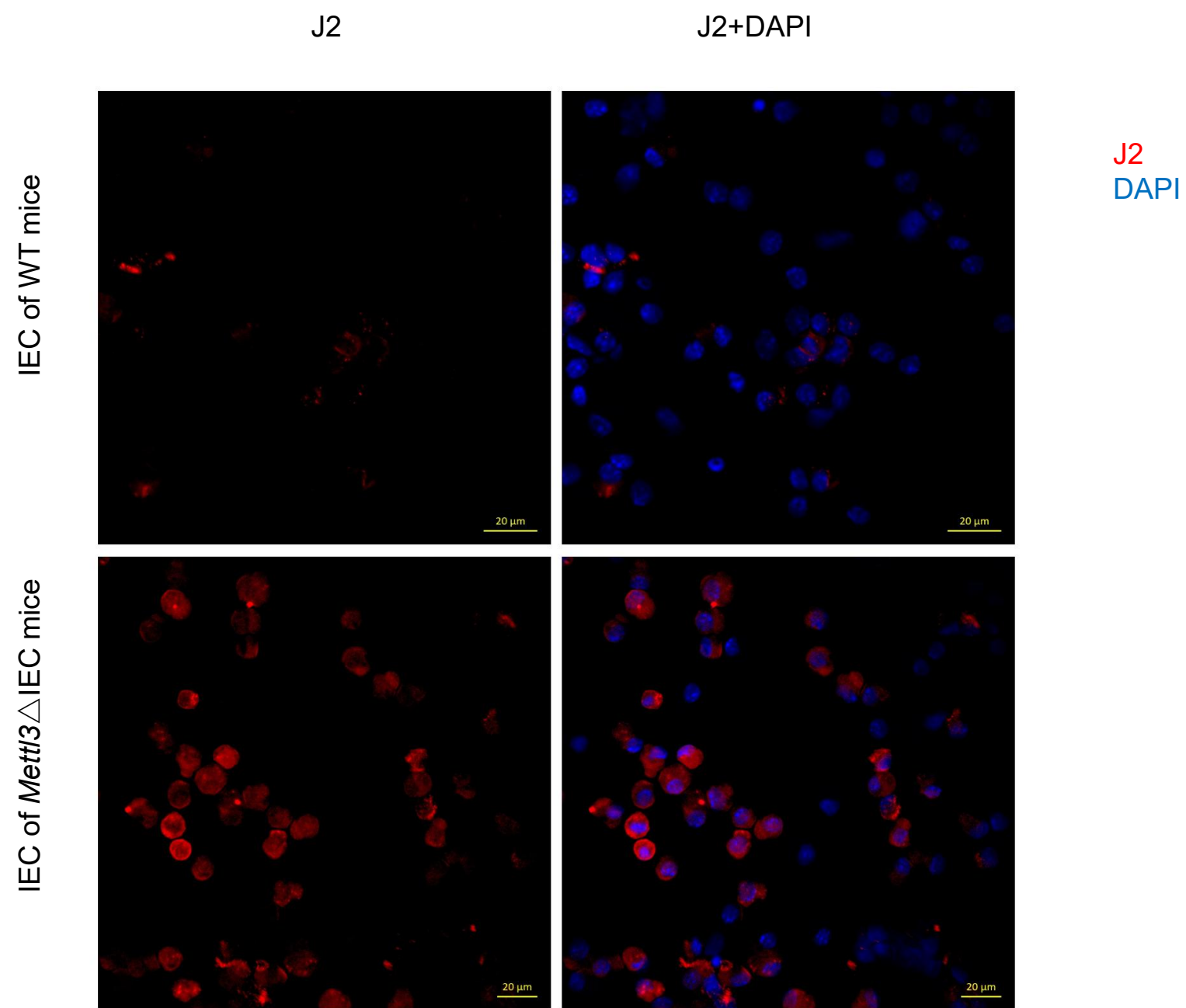


Figure 4-figure supplement 4. *Mettl3* deficiency leads to aberrant dsRNA formation in isolated IECs.

(a) IECs from 6-weeks-old *Mettl3*^{ΔIEC} mice as well as the WT littermate controls were isolated. Double-stranded RNA (dsRNA) was labeled by immunostaining with a mouse monoclonal antibody J2 (Scicons), cells nuclei were visualized with 4,6-diamidino-2-phenylindole (DAPI, Invitrogen). All fluorescence images were analyzed via confocal imaging using Zeiss LSM880. Experiments in (a) are repeated twice.