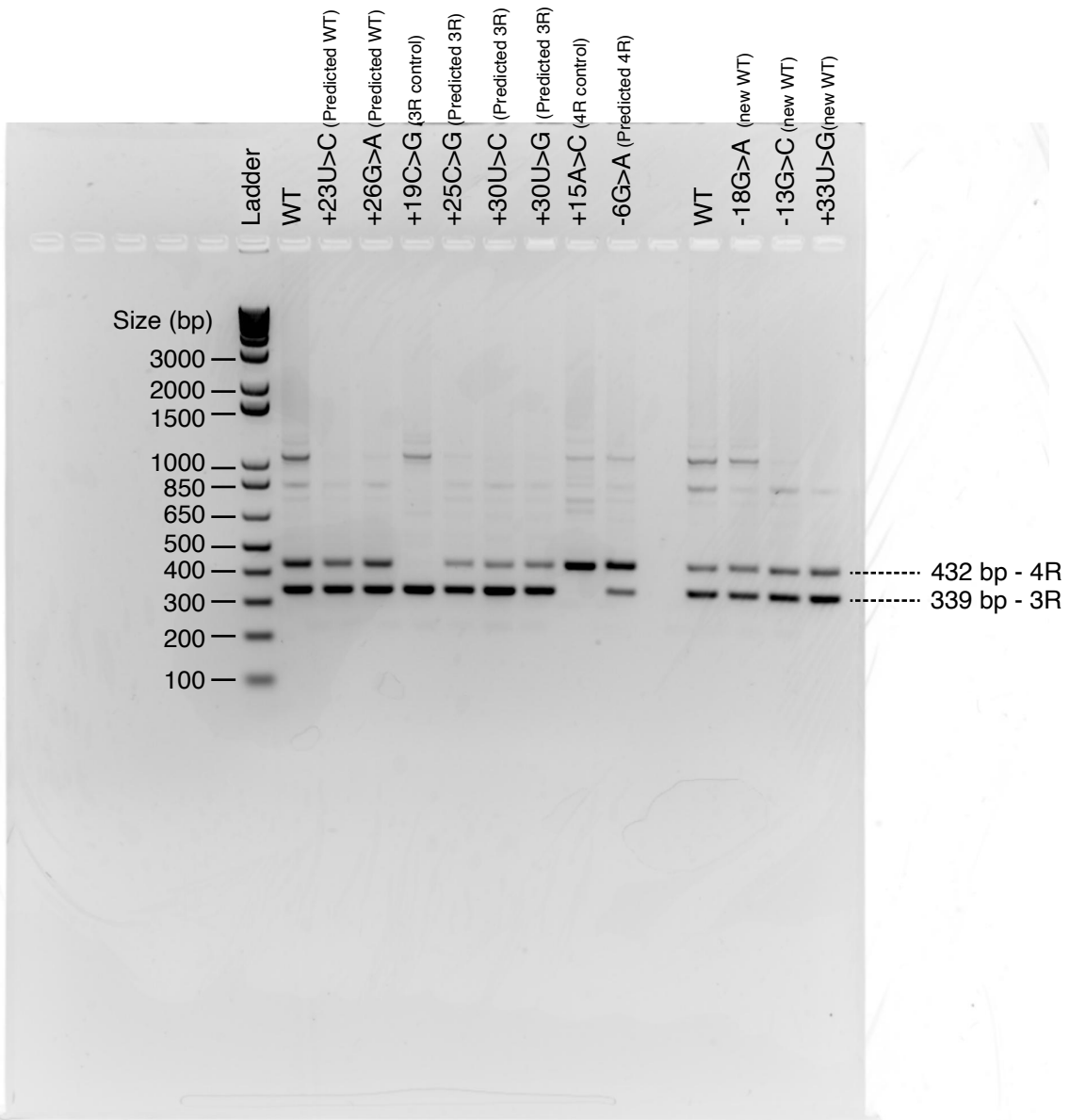
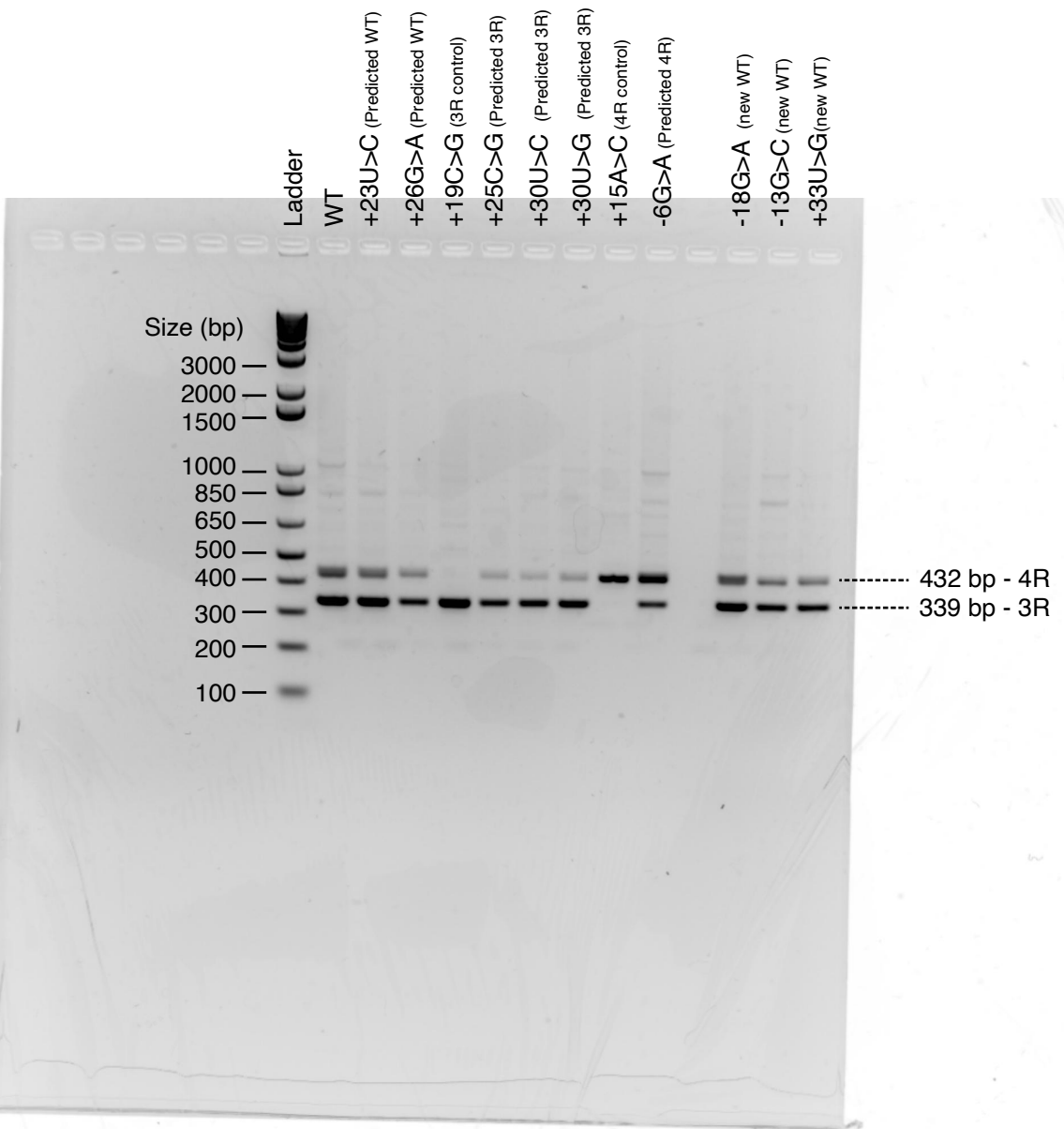


Rep1 - MAPT Splicing Assay
2% agarose gel in 1X tris-acetate EDTA (TAE) buffer



Rep 2 - MAPT Splicing Assay
2% agarose gel in 1X tris-acetate EDTA (TAE) buffer



Rep 3 - MAPT Splicing Assay
2% agarose gel in 1X tris-acetate EDTA (TAE) buffer