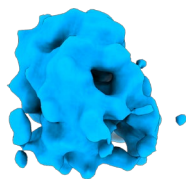


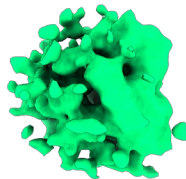
Extract from 2D classes

45,999 particles

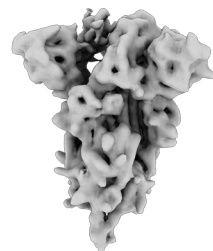
Hetero refinement with 3 ab-initio maps in cryoSPARC



#1 (17.2%)



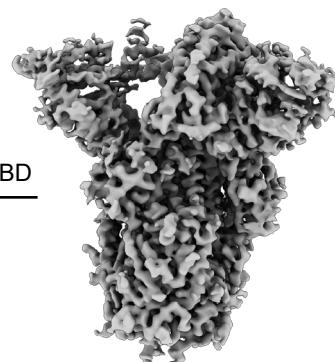
#2 (18.4%)



#3 (64.4%)

29,596 particles

Homogeneous, non-uniform and CTF refinements with C1 symmetry



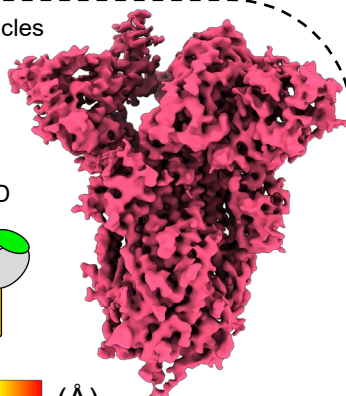
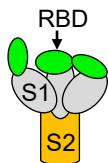
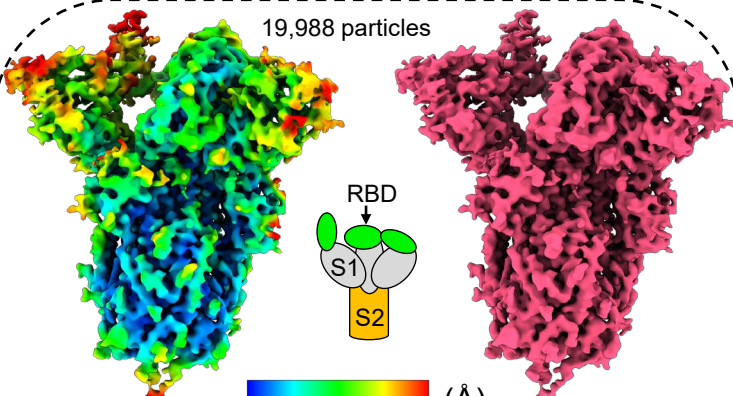
Masking RBD



Masked 3D classification with signal subtraction in RELION, then revert to original particles for non-uniform refinement in cryoSPARC

3.7 Å

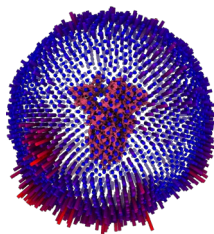
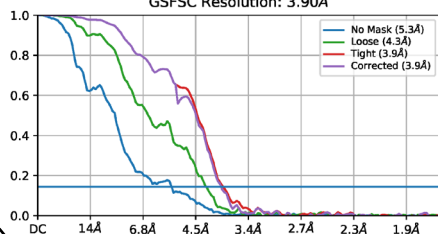
19,988 particles



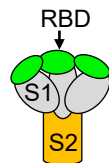
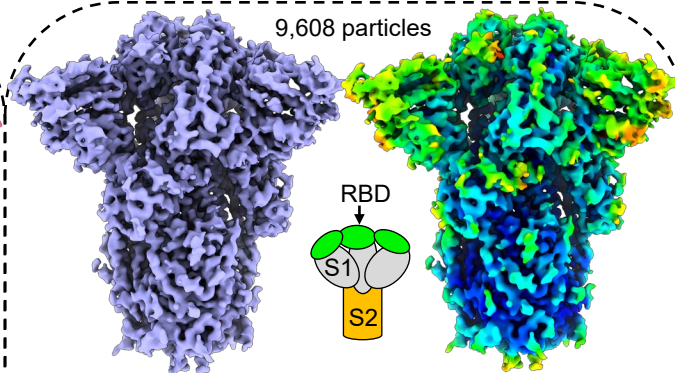
C1 symmetry

3.6 4.8 6.0 7.2 8.4 (Å)

GSFSC Resolution: 3.90Å



9,608 particles



C3 symmetry

3.6 4.8 6.0 7.2 8.4 (Å)

GSFSC Resolution: 3.78Å

