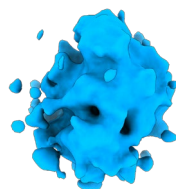


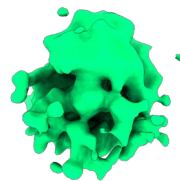
Extract from 2D classes

57,795 particles

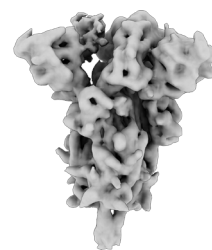
Hetero refinement with 3 ab-initio maps in cryoSPARC



#1 (12.5%)



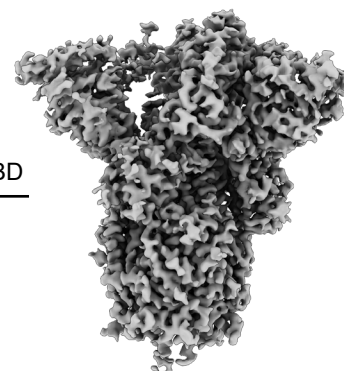
#2 (13.1%)



#3 (74.4%)

42,970 particles

Homogeneous, non-uniform and CTF refinements with C1 symmetry

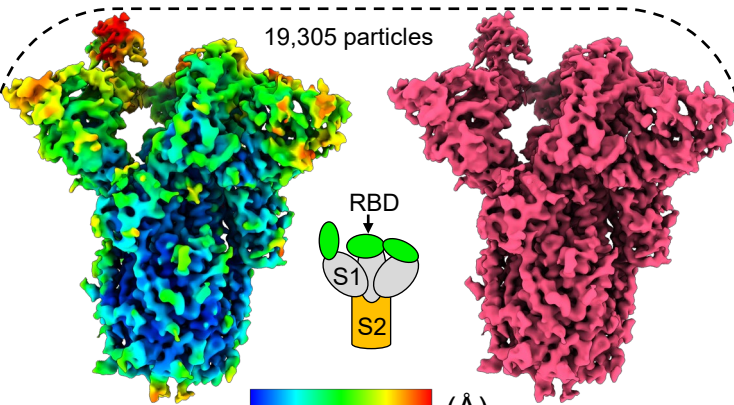


3.4 Å

Masking RBD

Masked 3D classification with signal subtraction in RELION, then revert to original particles for non-uniform refinement in cryoSPARC

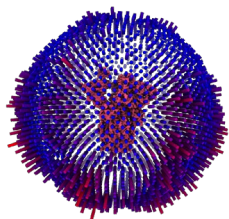
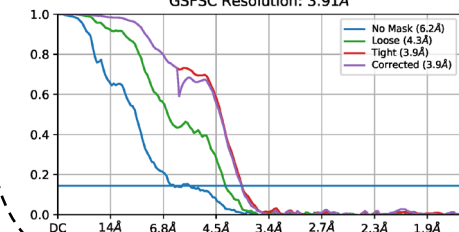
19,305 particles



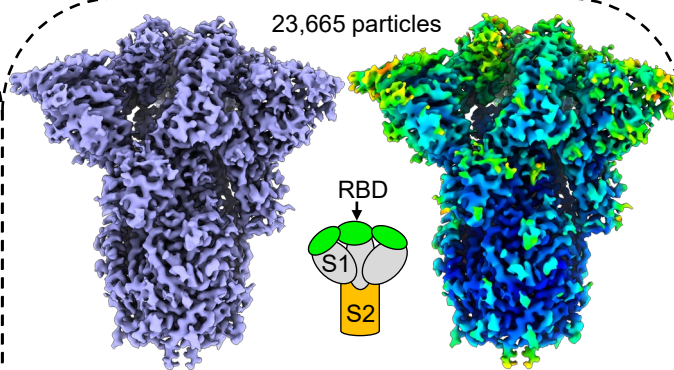
C1 symmetry

3.6 4.8 6.0 7.2 8.4 (Å)

GSFSC Resolution: 3.91Å



23,665 particles



C3 symmetry

3.0 4.0 5.0 6.0 7.0 (Å)

GSFSC Resolution: 3.23Å

