

Figure 4 - figure supplement 1

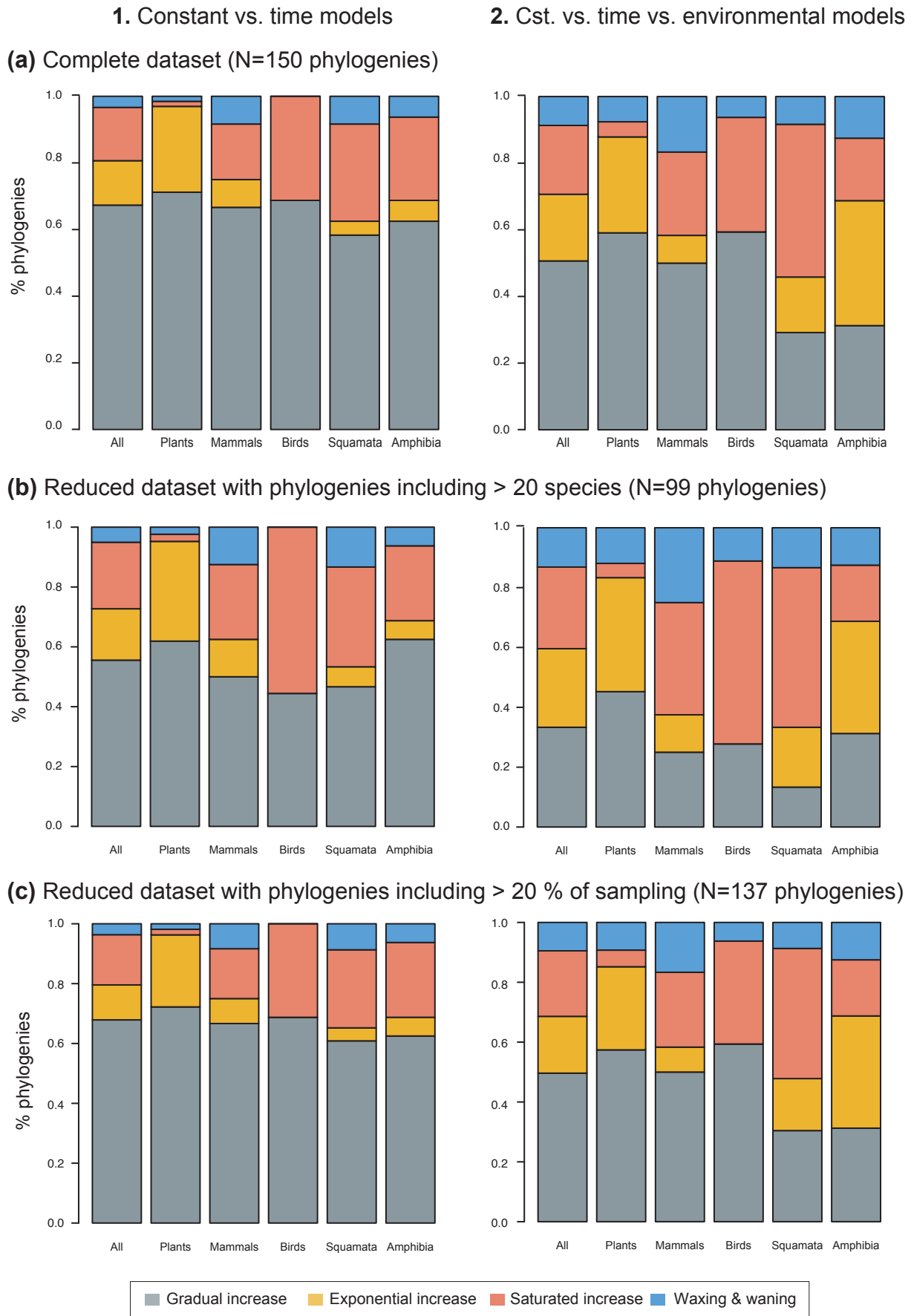


Figure-4 - figure supplement 1. Species richness dynamics on 150 phylogenies of Neotropical plants and tetrapods. The histograms show the proportion of phylogenies best fitting gradual increase (Sc. 1), exponential increase (Sc. 2), saturated increase (Sc. 3) and waxing & waning (Sc. 4) species richness dynamics, as derived from diversification rates when comparing **(1)** time-dependent against constant models, and **(2)** environmental (time- and uplift dependent) models against time-dependent and constant models. The results are reported for **(a)** the complete dataset, **(b)** a reduced dataset including only trees with more than 20 species, and **(c)** a reduced dataset including only trees with a sampling fraction over 20%. Abbreviations: Cst = constant.