

Figure 3 - figure supplement 1

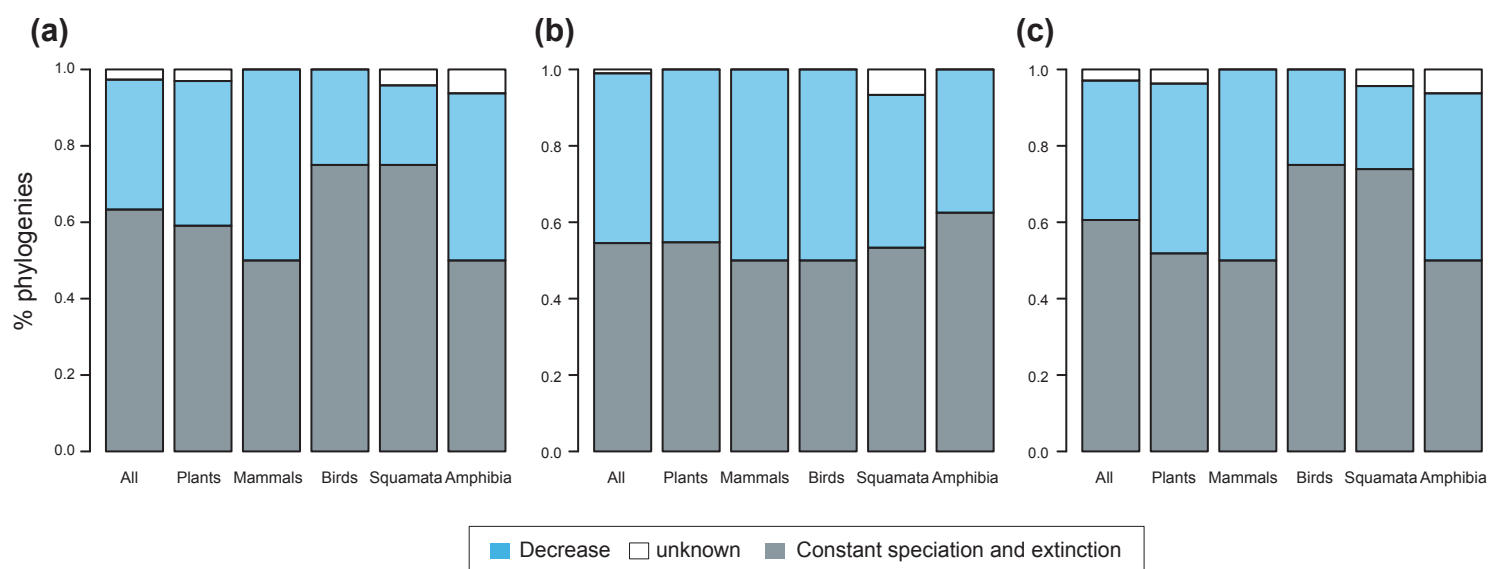


Figure-3 - figure supplement 1. Speciation trends on 150 phylogenies of Neotropical plants and tetrapods.

The histograms show the proportion of phylogenies best fitting constant vs. time-variable diversification models, as derived from pulled diversification rates for (a) the complete dataset, (b) a reduced dataset including only trees with more than 20 species (N=99), and (c) a reduced dataset including only trees with a sampling fraction over 20% (N=137). Speciation trends are derived from present-day pulled extinction rates $\mu p(0)$: negative present-day pulled extinction rates values ($\mu p(0) < 0$) indicate decreasing speciation trends through time (Louca & Pennell, 2020). Positive $\mu p(0) > 0$ values are possible under both increasing or decreasing speciation rates, in which case speciation trends are designed as “unknown”.