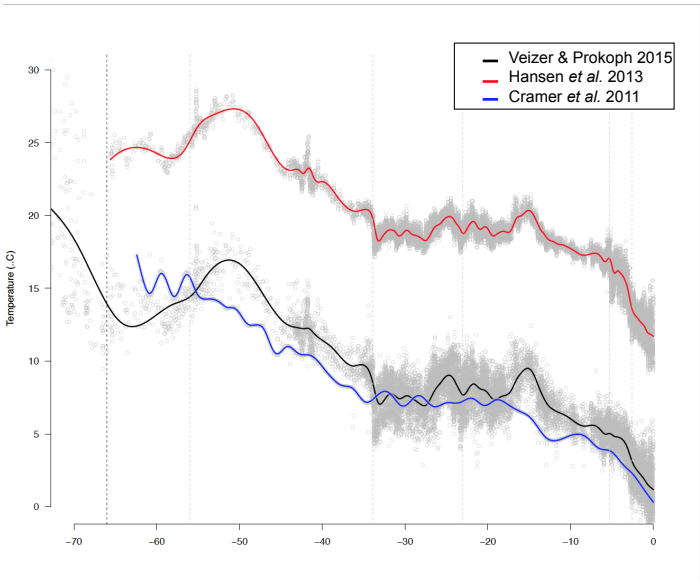


Figure 5 - figure supplement 2

(a) Paleotemperature estimates



(b) Diversification drivers

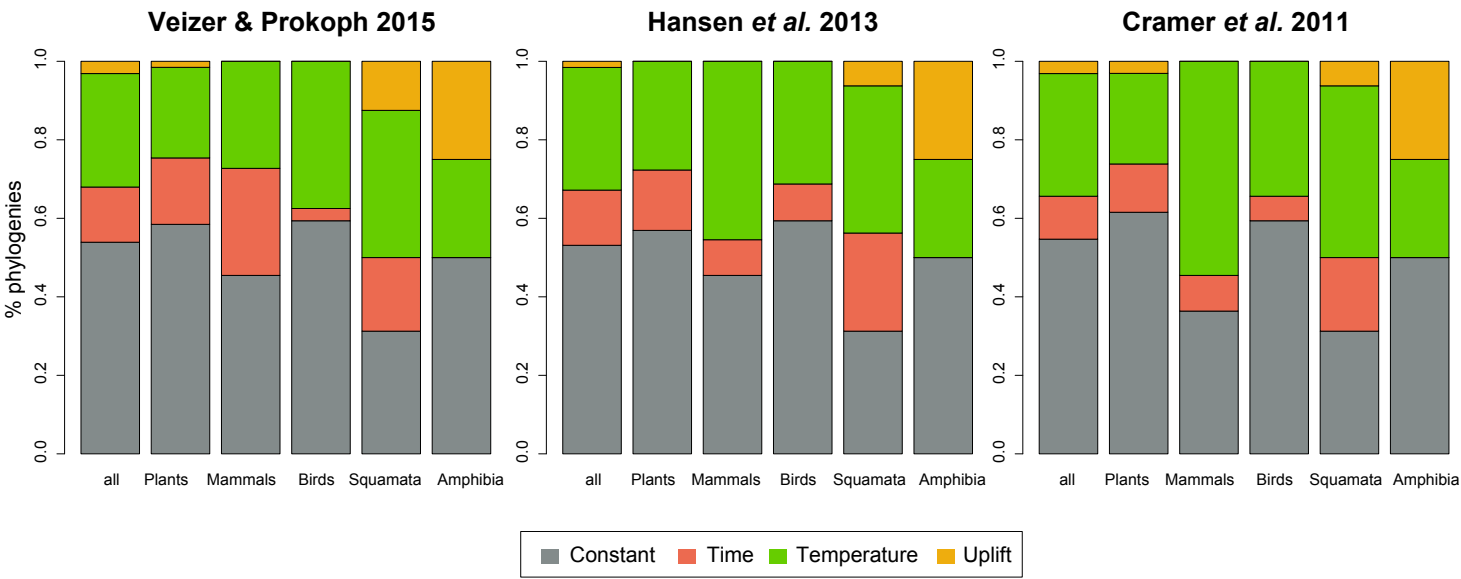


Figure 5 - figure supplement 2. Result comparisons when the temperature-dependency of diversification rates is estimated based on the paleotemperature curve of Veizer & Prokoph (2015), or Cramer *et al.* (2011) or Hansen *et al.* (2013), see Methods for details. **(a)** Mean global paleotemperature estimates mostly differ in the magnitude of the changes but share the same overall trend. The histograms report **(b)** the proportion of phylogenies best supported by a model with diversification rates that are constant (in red), time- (in blue), temperature- (in green), or Andean- (in orange) compared for the analyses based on different temperatures estimates.