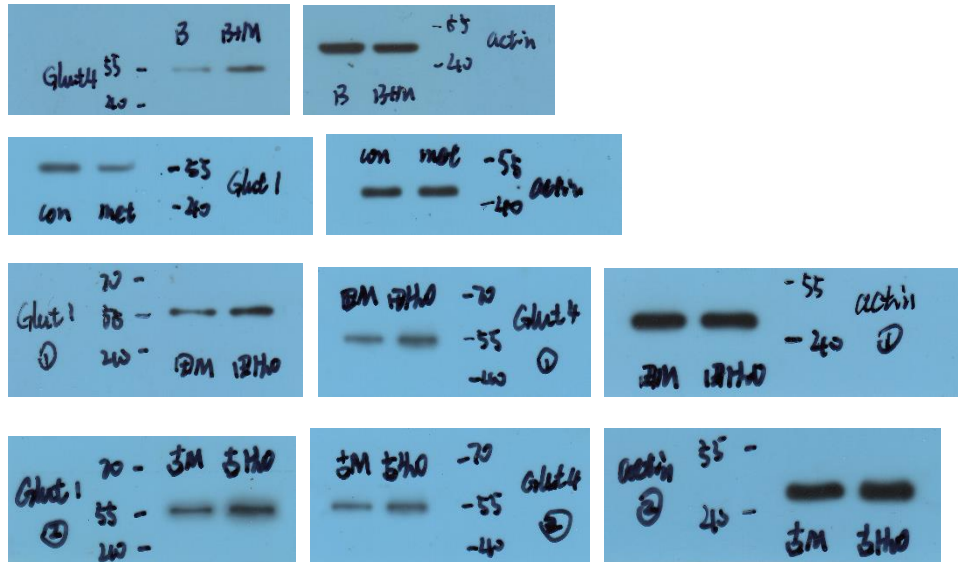


Figure 5. Metformin reduces glucose uptake in pathological B cells.

A, Glucose uptake was measured

B cells	1	1	1	1	1	1	1
B cells+Met	0.63	0.53	0.62	0.92	0.96	0.95	0.57

B-D, Glut 1 and Glut 4 expression in CD19⁺ B cells by western blot

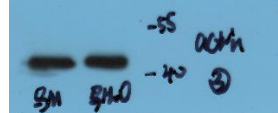
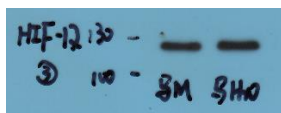
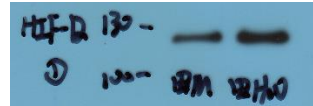
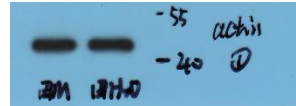
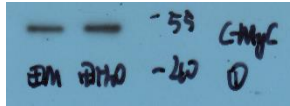
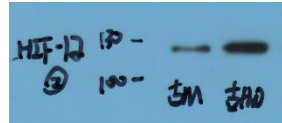
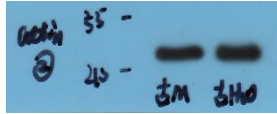
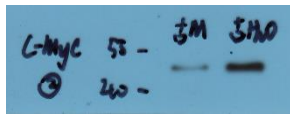
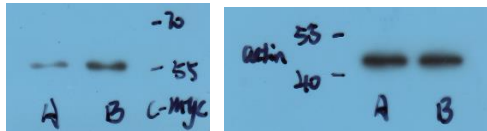


Glut 1/β actin		Glut 4/β actin	
B cells	B cells+Met	B cells	B cells+Met
0.32	0.1	0.33	0.1
0.37	0.13	0.23	0.13
0.37	0.14	0.32	0.05

E-F, Percentage of Glut 1⁺ cells and Glut 4⁺ cells in CD19⁺ B cells

	Glut 1 ⁺ cells-B cells								Glut 4 ⁺ cells-B cells							
	30min	2.4	1.1	1.2	0.7	1.5	1.9	/	/	8.6	11.4	11.1	12.3	5.9	8.1	4.8
4h	9.5	4.7	4.3	4.1	3	2	1.8	5.7	0.3	0.5	0.7	1.1	0.2	0	/	/
	Glut 1 ⁺ cells -B cells+Met								Glut 4 ⁺ cells- B cells+Met							
	30min	2.4	1.2	1.1	0.3	1.5	0.5	/	/	3	8.5	10.6	3.5	4.2	6	5
4h	7.9	3.4	2	2.9	3.4	2.4	1.4	4	1.2	0.5	0.8	1.2	0.5	0.2	/	/

G-I, HIF1α and c-Myc expression in CD19⁺ B cells by western blot



HIF1α /β actin		c-Myc /β actin	
B cells	B cells+Met	B cells	B cells+Met
0.55	0.22	0.32	0.2
0.53	0.09	0.35	0.03
0.51	0.37	0.39	0.09