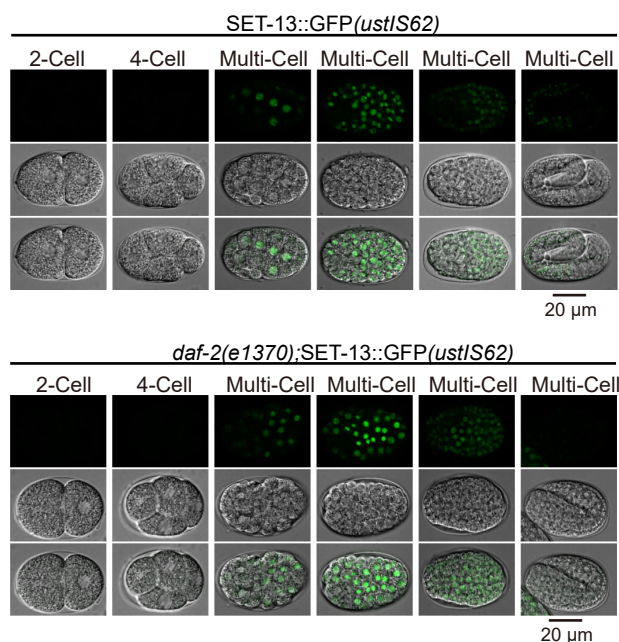


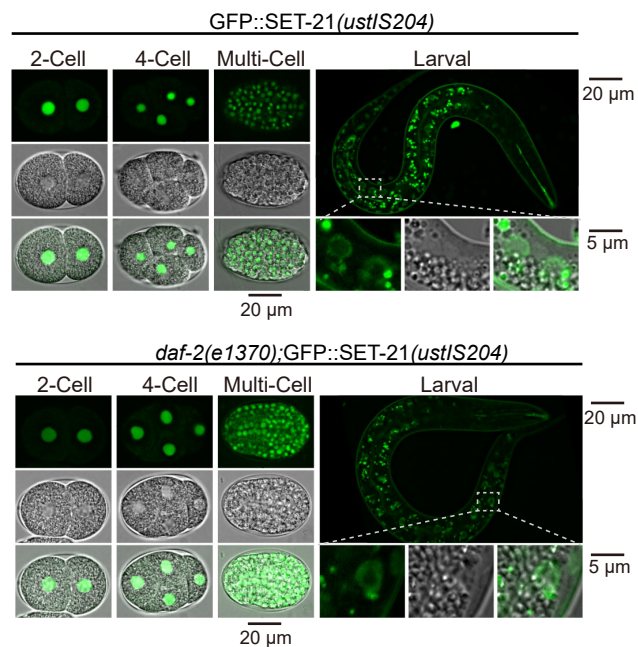
A

	embryo					soma	germline	
	2-cell	4-cell	8-cell	200-350-cell	Multi-Cell	soma	Mitosis	Meiosis
SET-13	-	-	+	+	-	-	-	-
SET-21	+	+	+	+	+	+	+/-	-
SET-25	+	+	+	+	+	-	+	+
SET-32	+	+	+	+	+	-	+	+

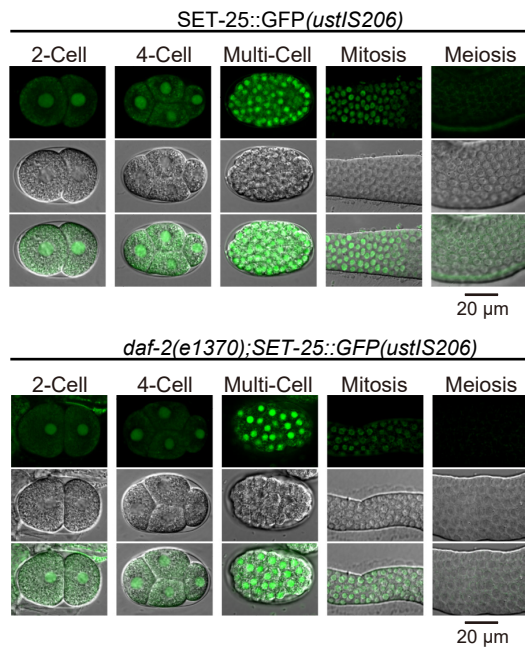
B



C



D



E

