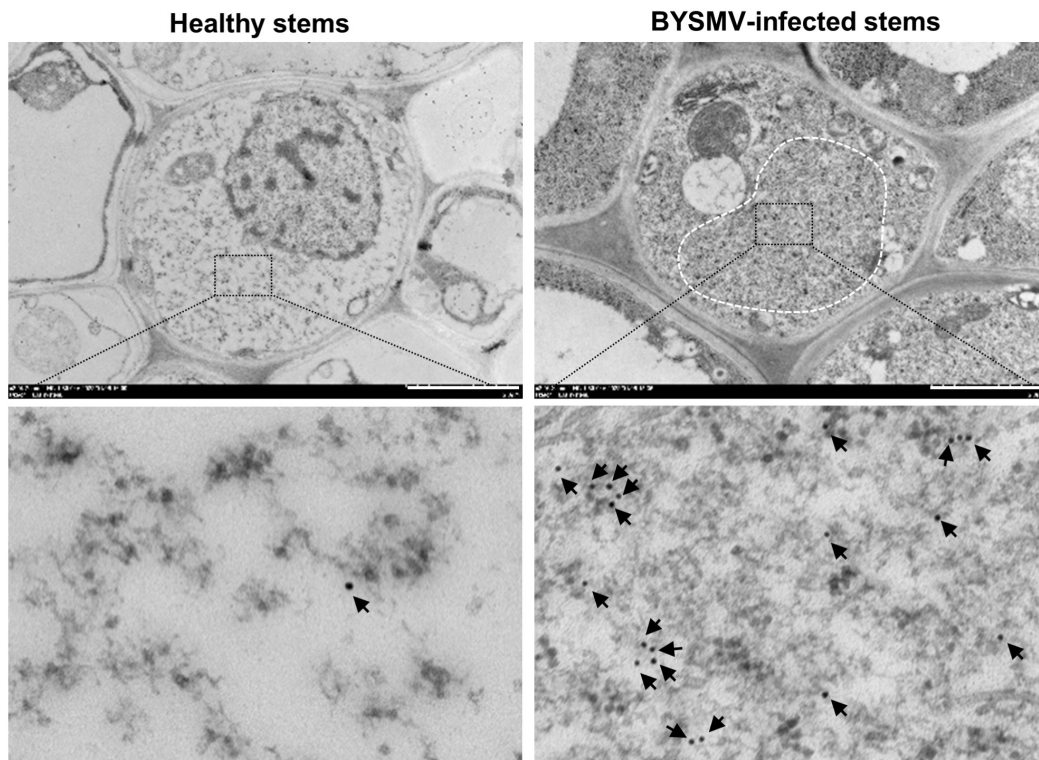


## Figure 1–Figure supplement 1



**Figure 1–Figure supplement 1. Immunoelectron microscopy detecting the BYSMV P protein in BYSMV-RFP-infected stems.** BYSMV-RFP-infected stems at 9 dpi or healthy stems were subjected to immunoelectron microscopy. P-specific antiserum showed specific labeling of BYSMV viroplasm (black arrows) in the cytoplasm. The electron dense granular structure of the BYSMV viroplasm was highlighted by white dotted line. Scale bars, 2  $\mu$ m.