

Figure 1–Figure supplement 6

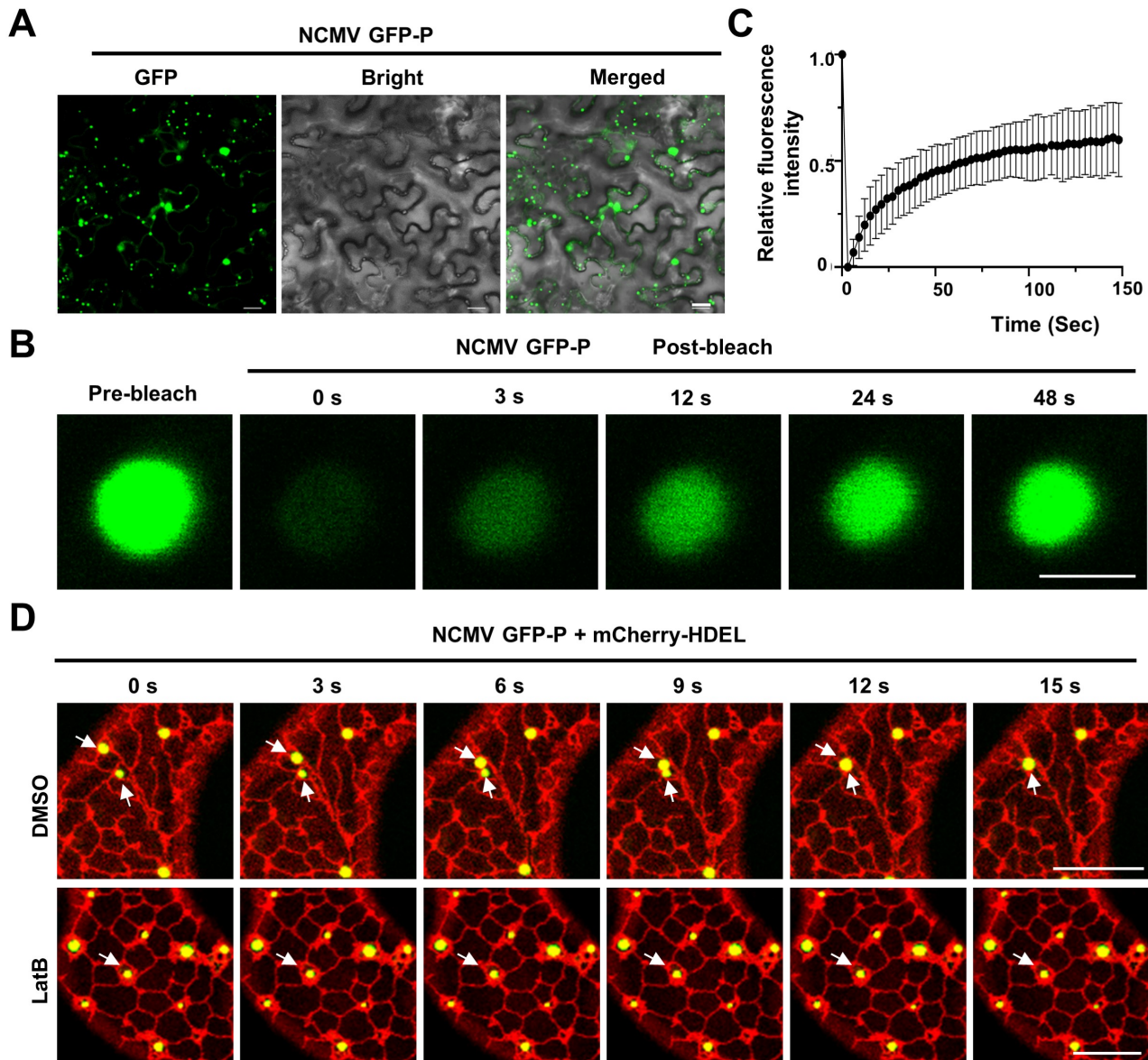


Figure 1–Figure supplement 6. NCMV P forms liquid structures *in vivo*. (A) Confocal images showing subcellular distribution of NCMV GFP-P transiently expressed in *N. benthamiana* leaf epidermal cells at 2 dpi. Scale bar = 20 μ m. (B) Representative FRAP images of NCMV GFP-P granules transiently expressed in epidermal cells of *N. benthamiana* leaves at 2 dpi. Leaves were treated with 10 μ M LatB to inhibit traffic of NCMV GFP-P granules at 3 h before FRAP imaging. Scale bars, 2 μ m. (C) Representative FRAP recovery curves of NCMV GFP-P granules as shown in panel B. The intensity of each body was normalized against their pre-bleach fluorescence. Data were expressed as the mean \pm SD of 15 foci. (D) Time-lapse confocal micrographs showing the localization of NCMV GFP-P and mCherry-HDEL transiently expressed in *N. benthamiana* leaf epidermal cells at 2 dpi. Leaves were treated with DMSO or 10 μ M LatB at 3 h before imaging. White arrows indicate that GFP-P granules undergo fusion. Scale bars, 10 μ m.