

Figure 2–Figure supplement 1

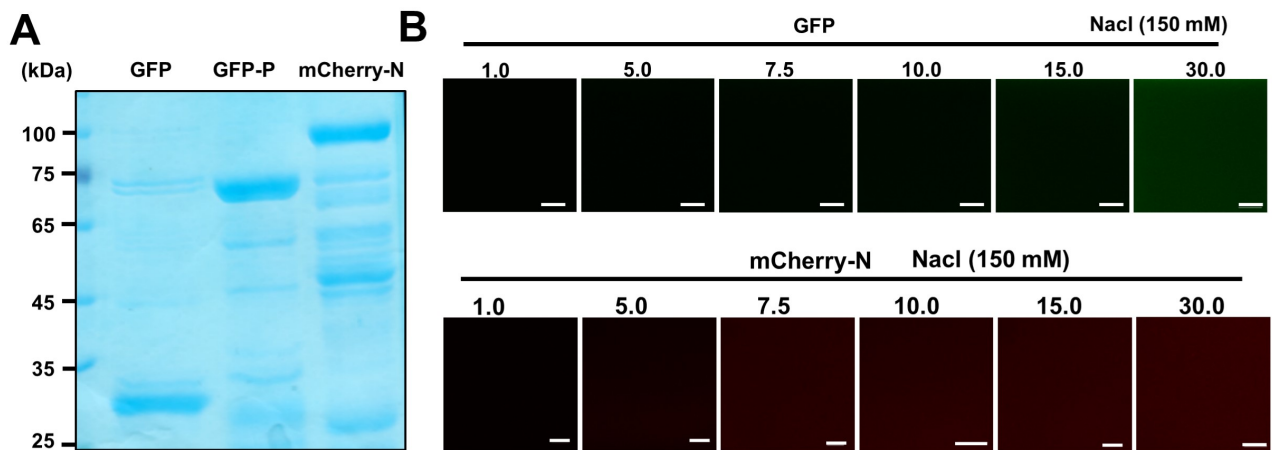


Figure 2–Figure supplement 1. GFP and BYSMV mCherry-N are deficient in forming liquid droplets *in vitro*. (A) SDS-PAGE showing purified GFP, GFP-P, and mCherry-N proteins. (B) Confocal images showing that neither GFP nor mCherry-N formed droplets at the concentration of 1-30 μ M in 150 mM NaCl. Scale bars, 20 μ m.