

Figure 4—Figure supplement 2

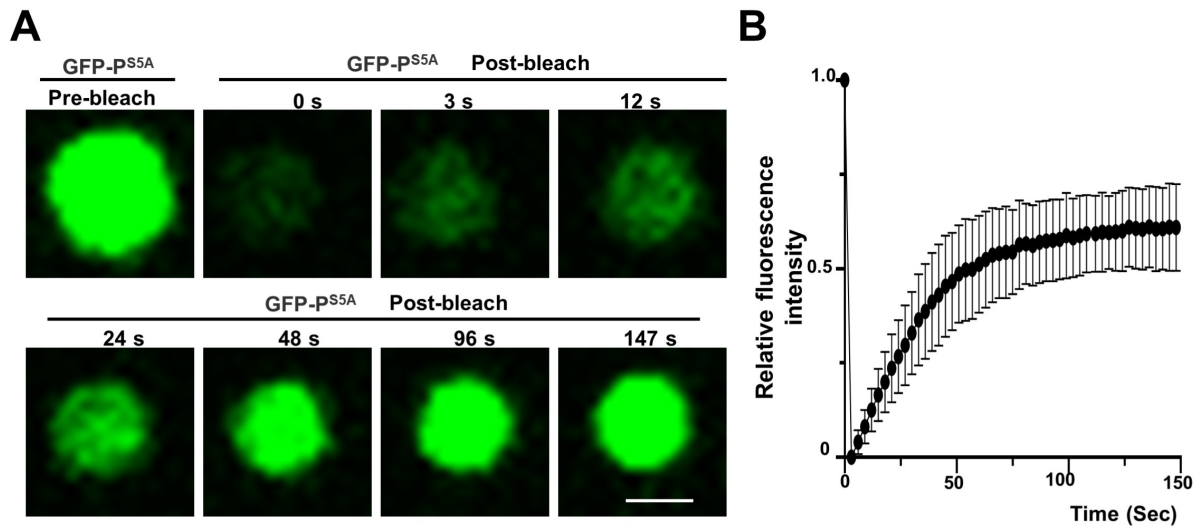


Figure 4—Figure supplement 2. FRAP experiment analysis liquid quality of GFP-P^{S5A} granules. (A) Representative FRAP images of GFP-P^{S5A} granules in epidermal cells of *N. benthamiana* leaves at 2 dpi. Leaves were treated with 10 μM LatB to inhibit movement of GFP-P^{S5A} granules at 3 h before photobleaching. Scale bar, 1 μm. (B) FRAP recovery curves of GFP-P^{S5A} granules. The intensity of each granule was normalized against their pre-bleach fluorescence. Data were presented as mean ± SD of 15 granules.