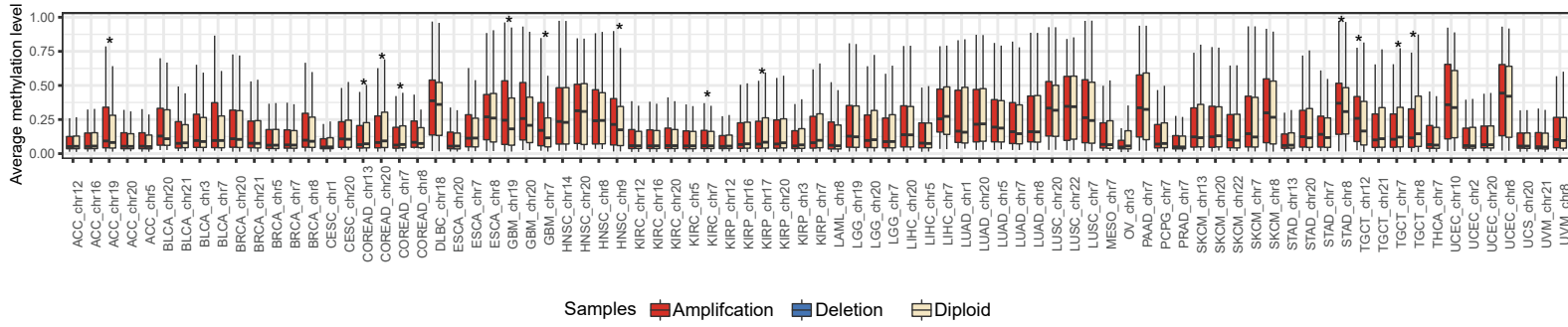
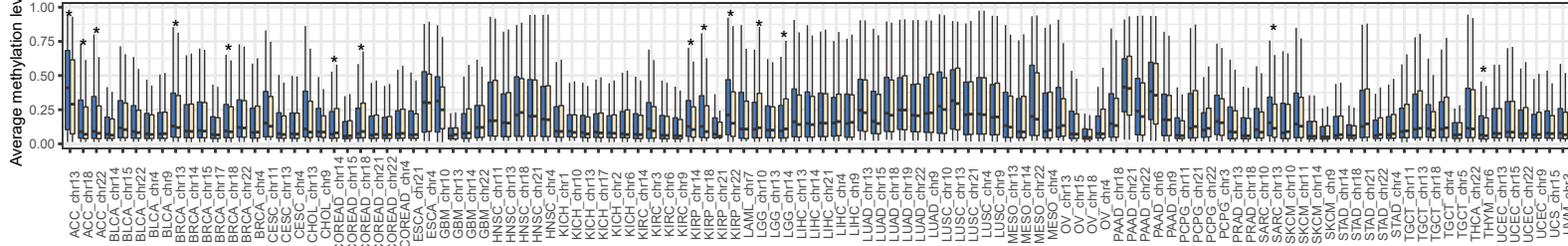


A

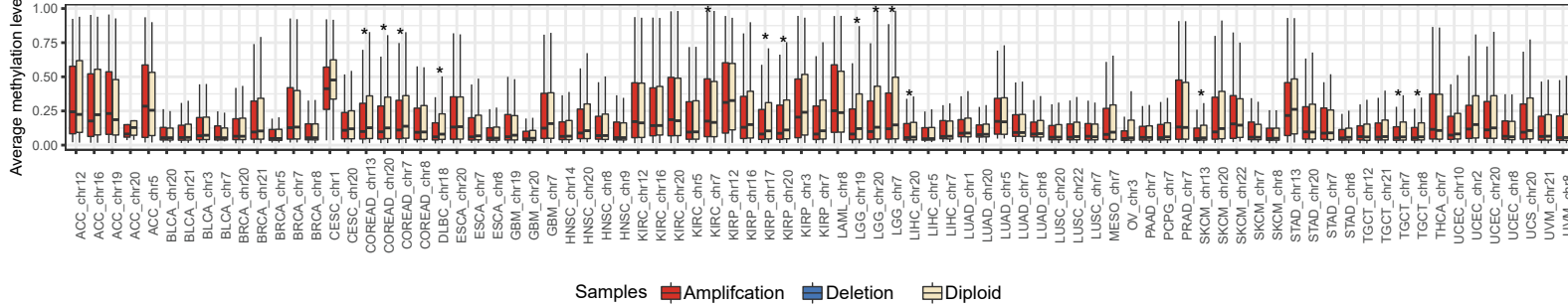
Methylation levels of downregulated genes on other chromosomes in amplification cases



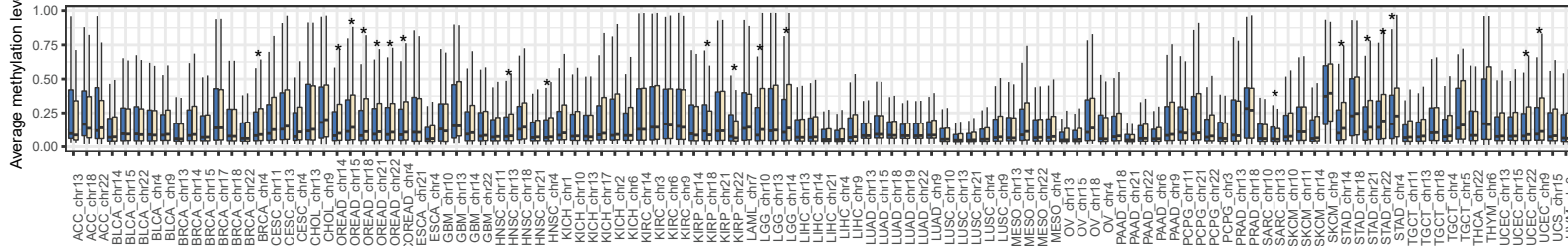
Methylation levels of downregulated genes on other chromosomes in deletion cases

**B**

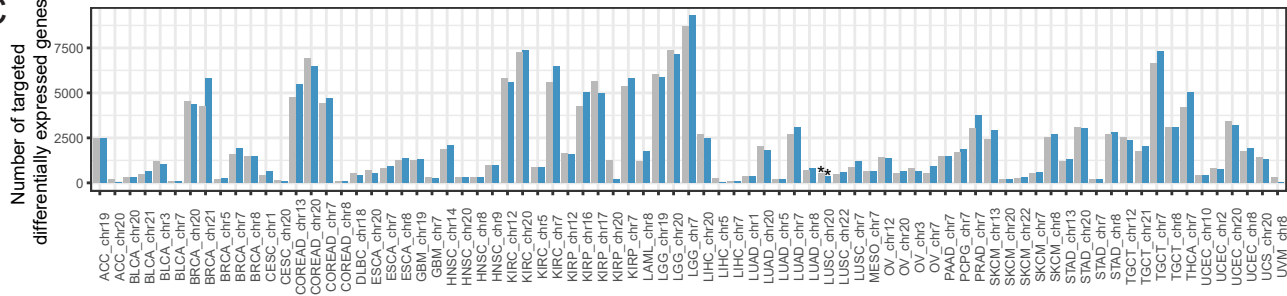
Methylation levels of upregulated genes on other chromosomes in amplification cases



Methylation levels of upregulated genes on other chromosomes in deletion cases

**C**

Amplification



Value

Expected

Observed

Deletion

