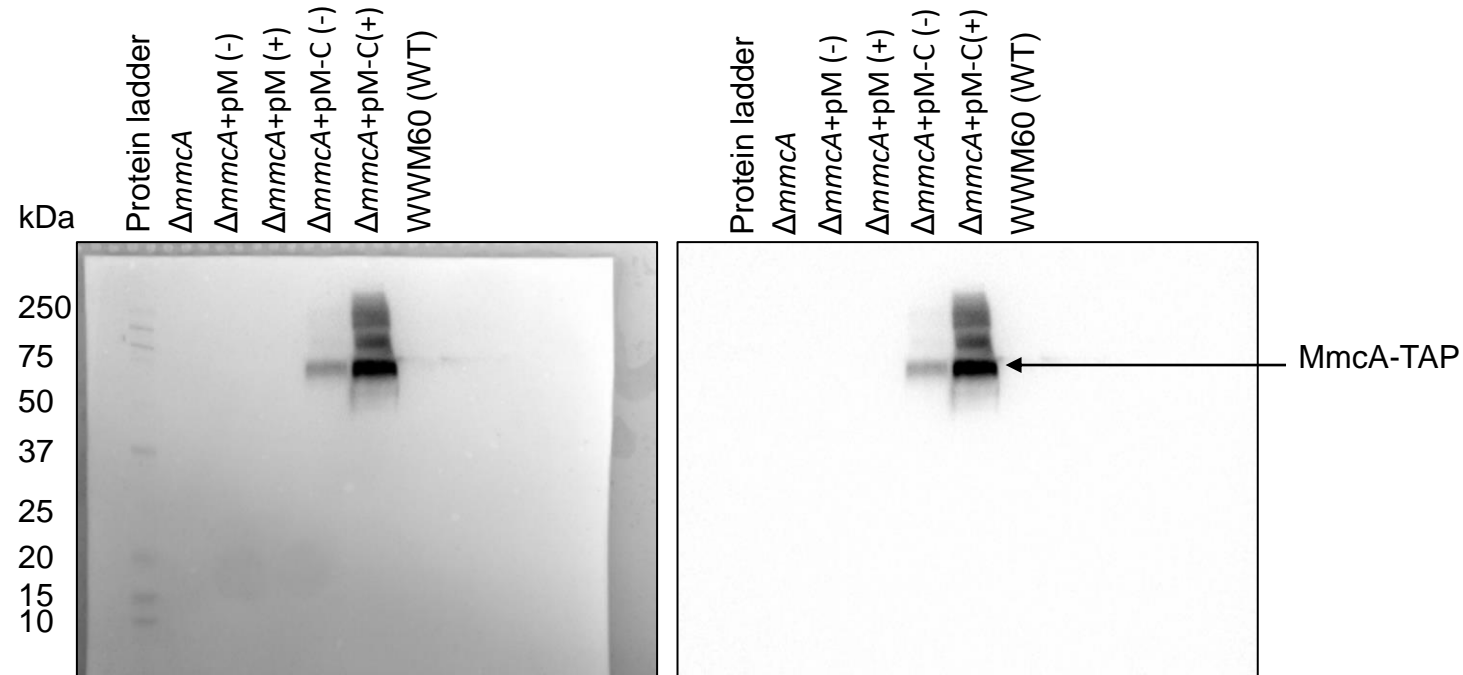


**Figure 1b:** Heme stain, Left hand side (image merged with ladder), Right hand side (image used in figure 1b). For further details, refer to figure legend for Figure 1b.



**Figure 1b:** anti-Flag Western Blot, Left hand side (image merged with ladder), Right hand side (image used in figure 1b). For further details, refer to figure legend for Figure 1b.