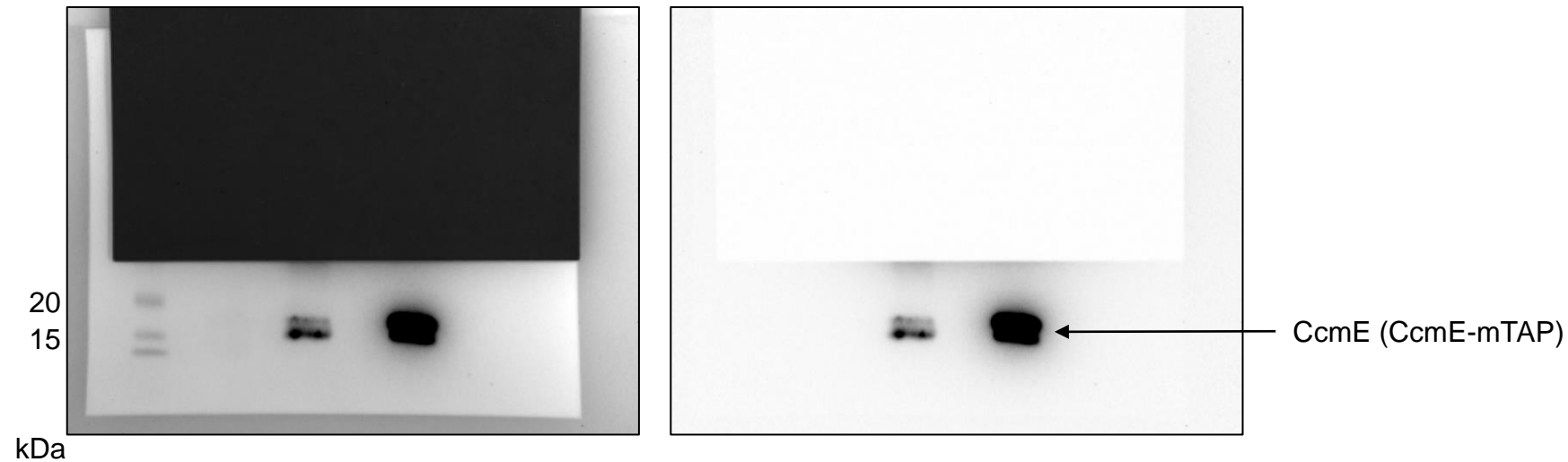


**Figure 4c:** Heme stain, Left hand side (image merged with ladder), Right hand side (image used in figure 4c). For details, refer to the legend for Figure 4c.



**Figure 4c:** anti-Flag Western Blot, Left hand side (image merged with ladder), Right hand side (image used in figure 4c). For details, refer to the legend for Figure 4c.

Note: The labels are the same for gels and blots on the top and bottom