

Figure 4- Figure Supplement 1

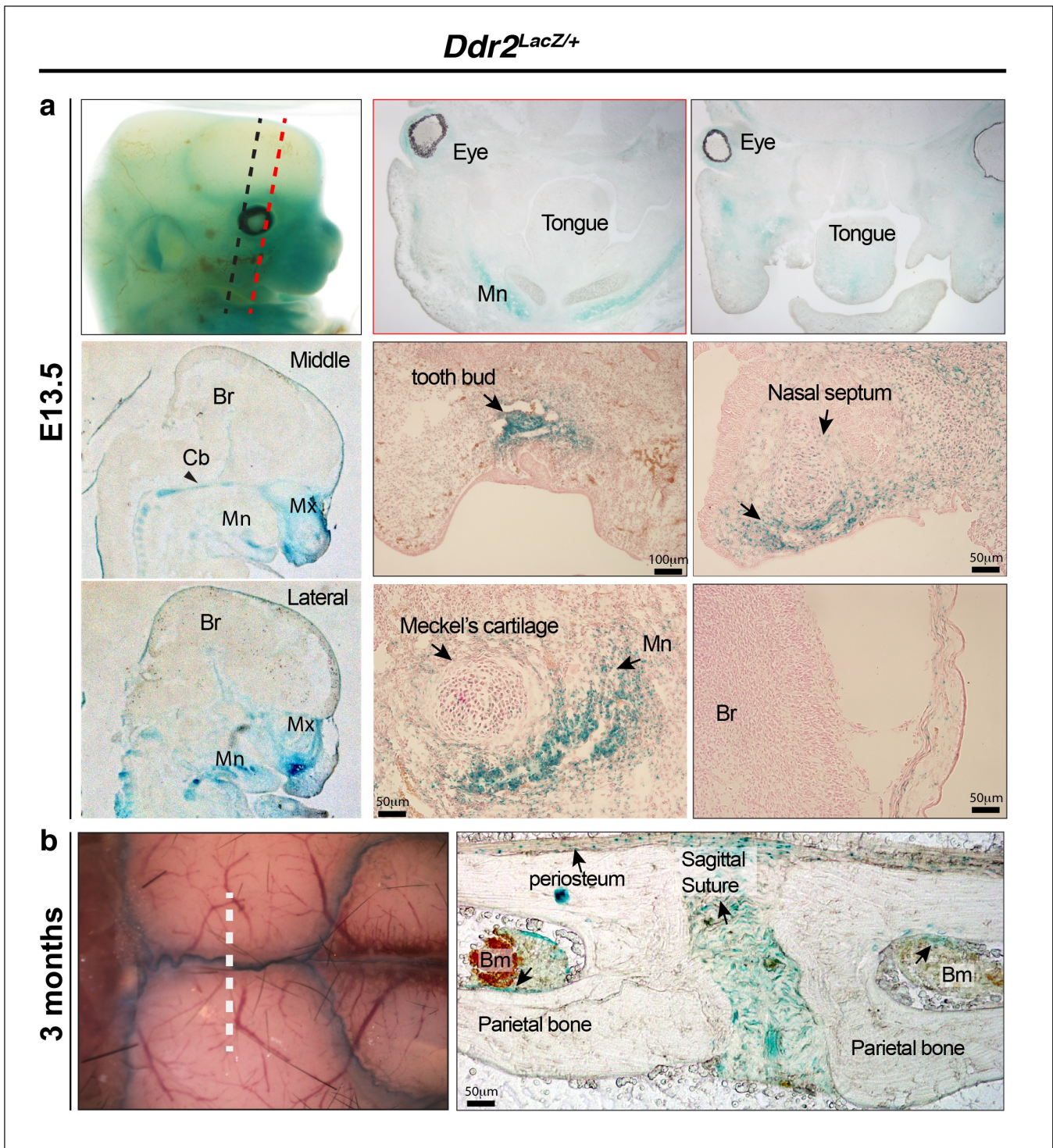


Figure 4-figure supplement 1. *Ddr2*-LacZ localization in craniofacial skeleton. **a**, In *Ddr2^{+/-LacZ}* embryos harvested at E13.5, intense X-gal staining can be seen in the maxilla (Mx), mandible (Mn), cartilage primordia of cranial base (Cb, black arrowhead), nasal septum and tooth buds. No staining was detected in the brain (Br) (top row, whole mount X-gal staining; middle and bottom row, X-gal staining on frozen embryos). **b**, Whole mount and frozen sections of calvariae from 3-month-old mice show intense X-gal staining in cranial sutures, periosteum and lining of bone marrow inside cranial bones.