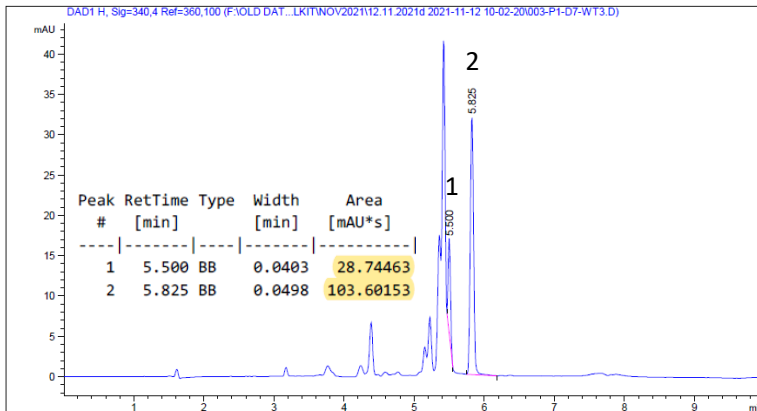
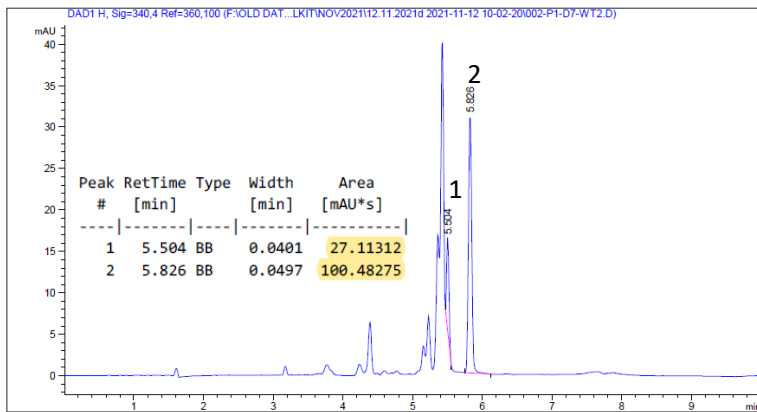
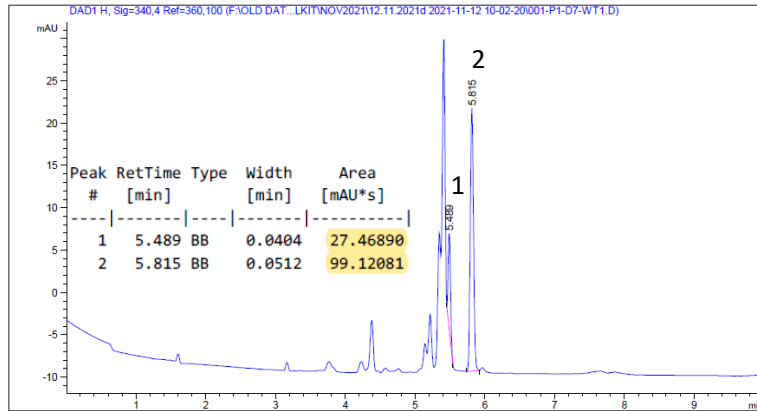


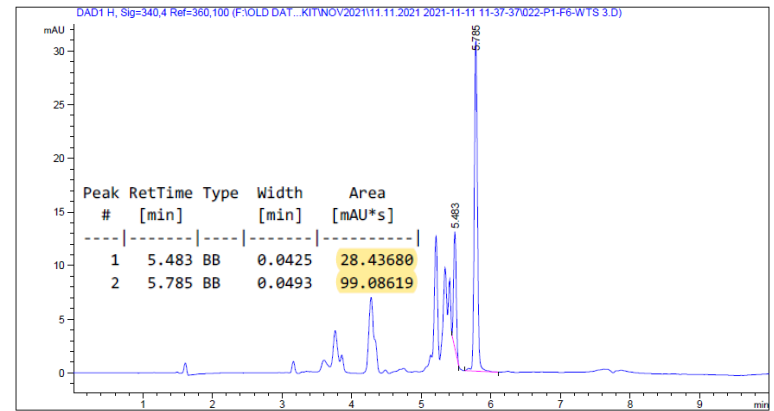
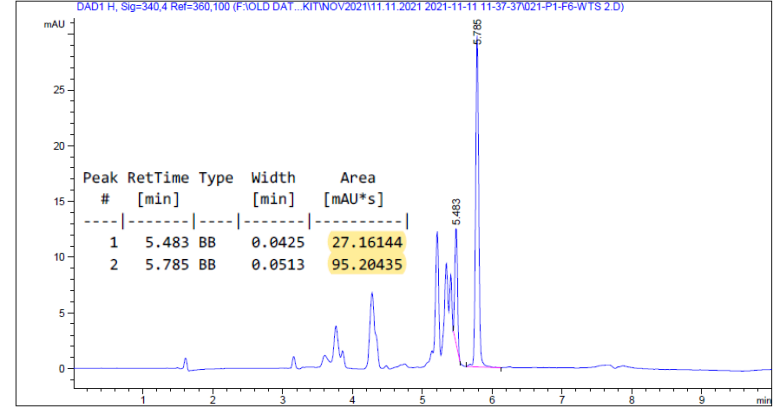
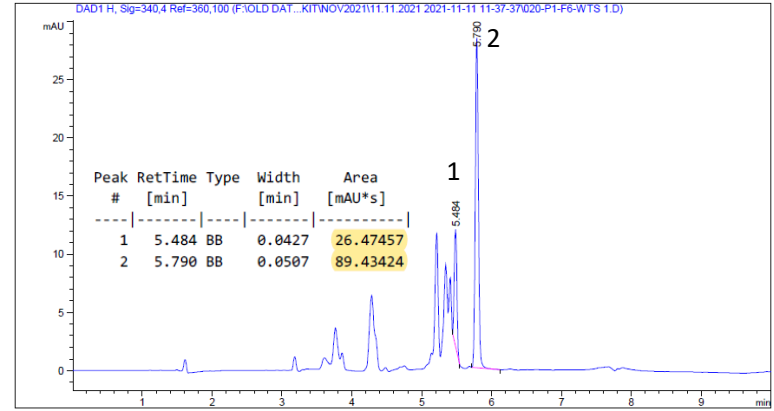
HPLC profiles of dansylated samples

(Peak 1: Hexane diamine int STD; Peak 2: Spermidine)

WT samples (triplicate)



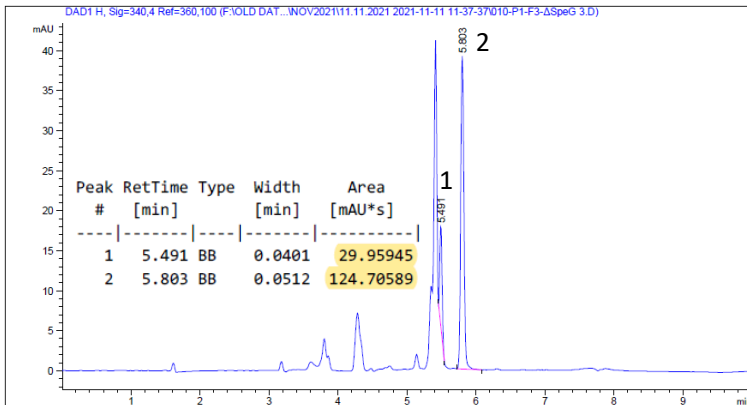
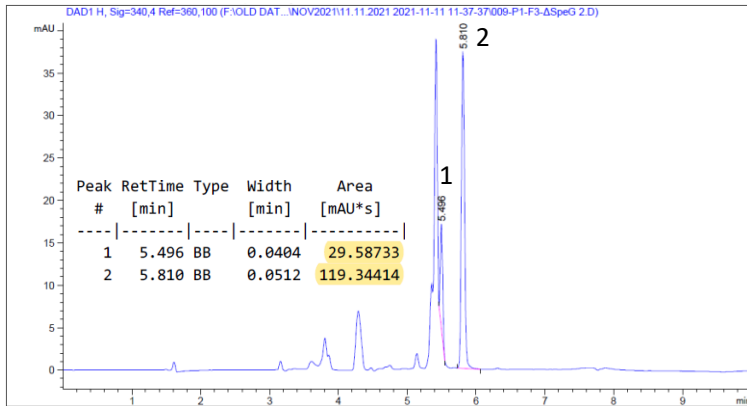
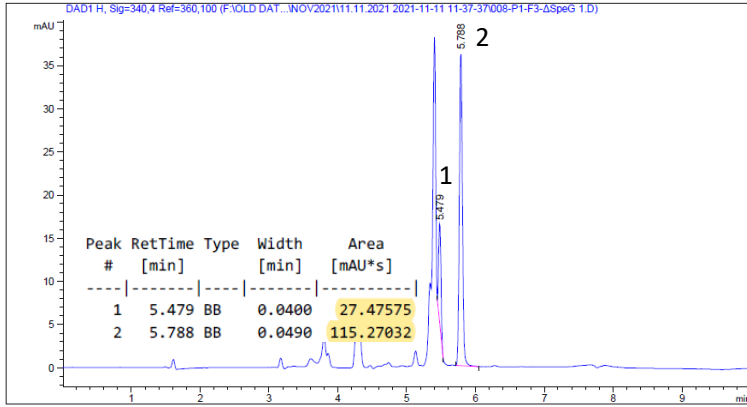
WT+spermidine samples (triplicate)



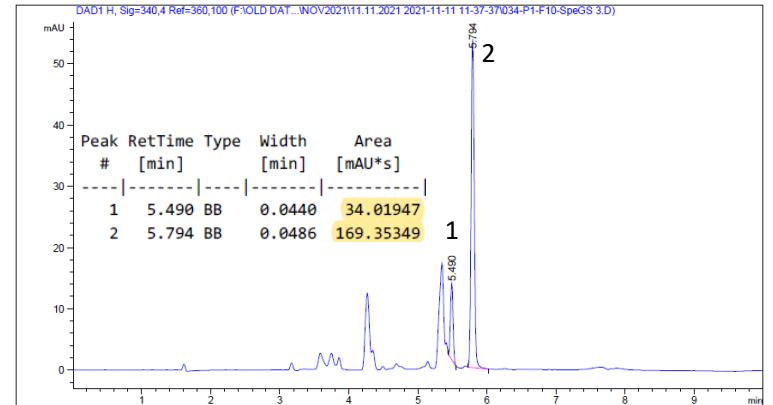
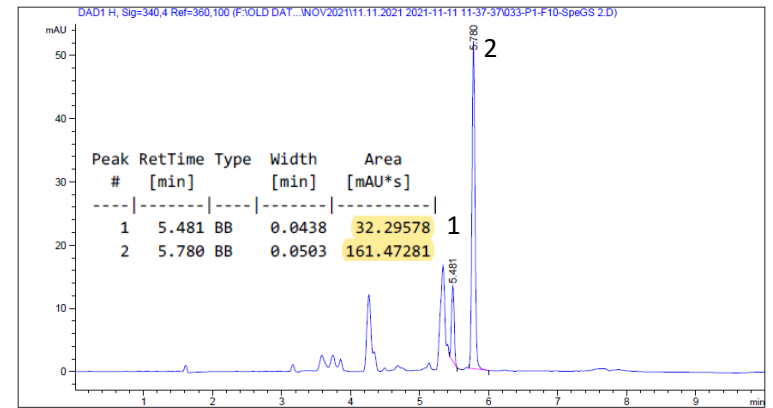
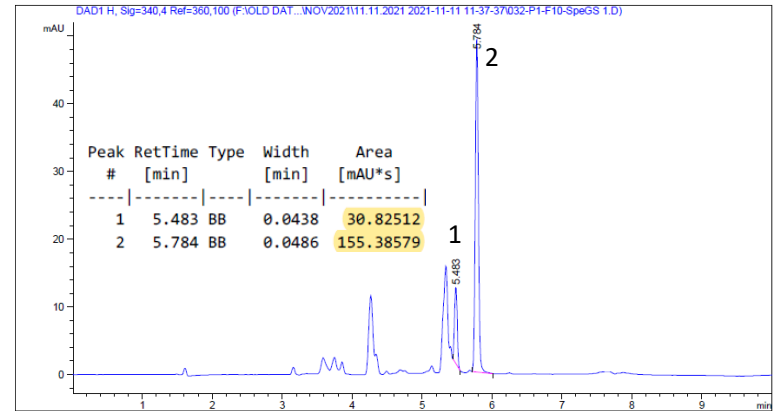
HPLC profiles of dansylated samples

(Peak 1: Hexane diamine int STD; Peak 2: Spermidine)

ΔspeG samples (triplicate)



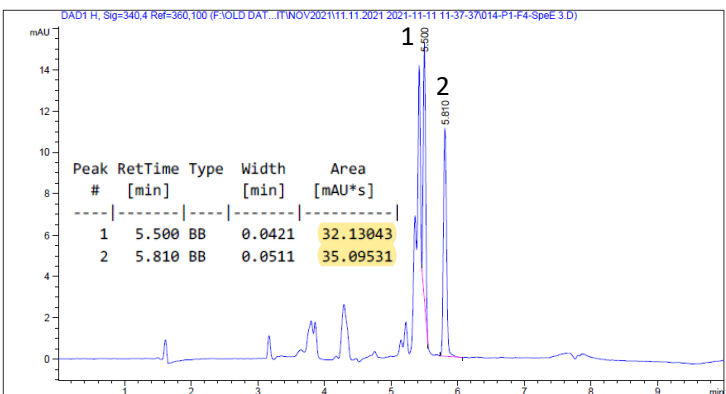
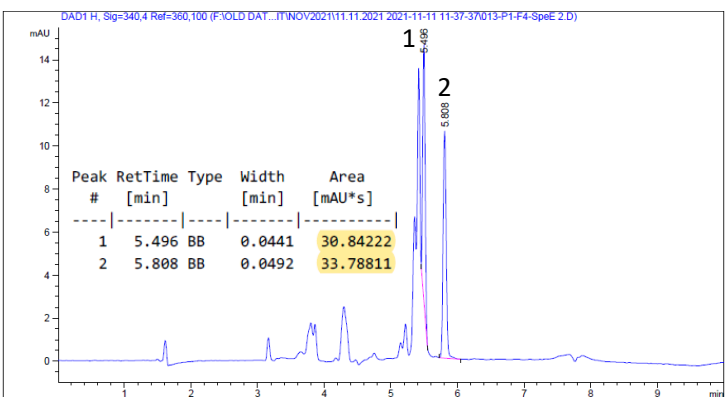
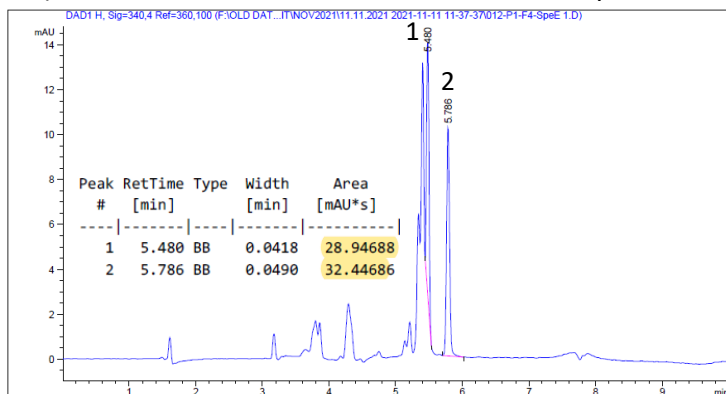
ΔspeG +spermidine samples (triplicate)



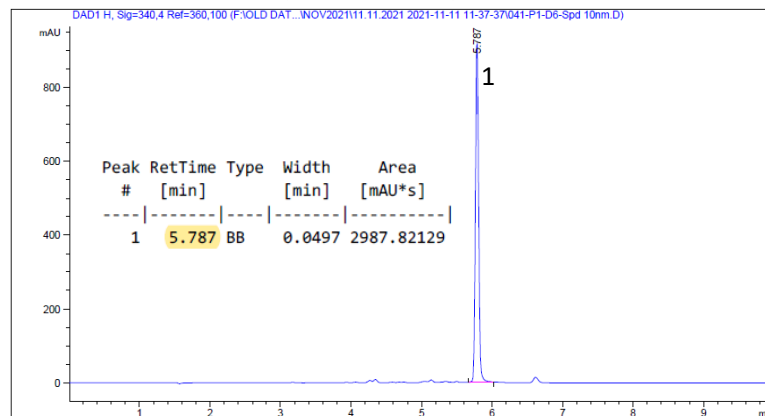
HPLC profiles of dansylated samples

$\Delta speE$ samples (triplicate)

(Peak 1: Hexane diamine int STD; Peak 2: Spermidine)



Pure dansylated-spermidine peak



Pure dansylated-Hexane-diamine peak

