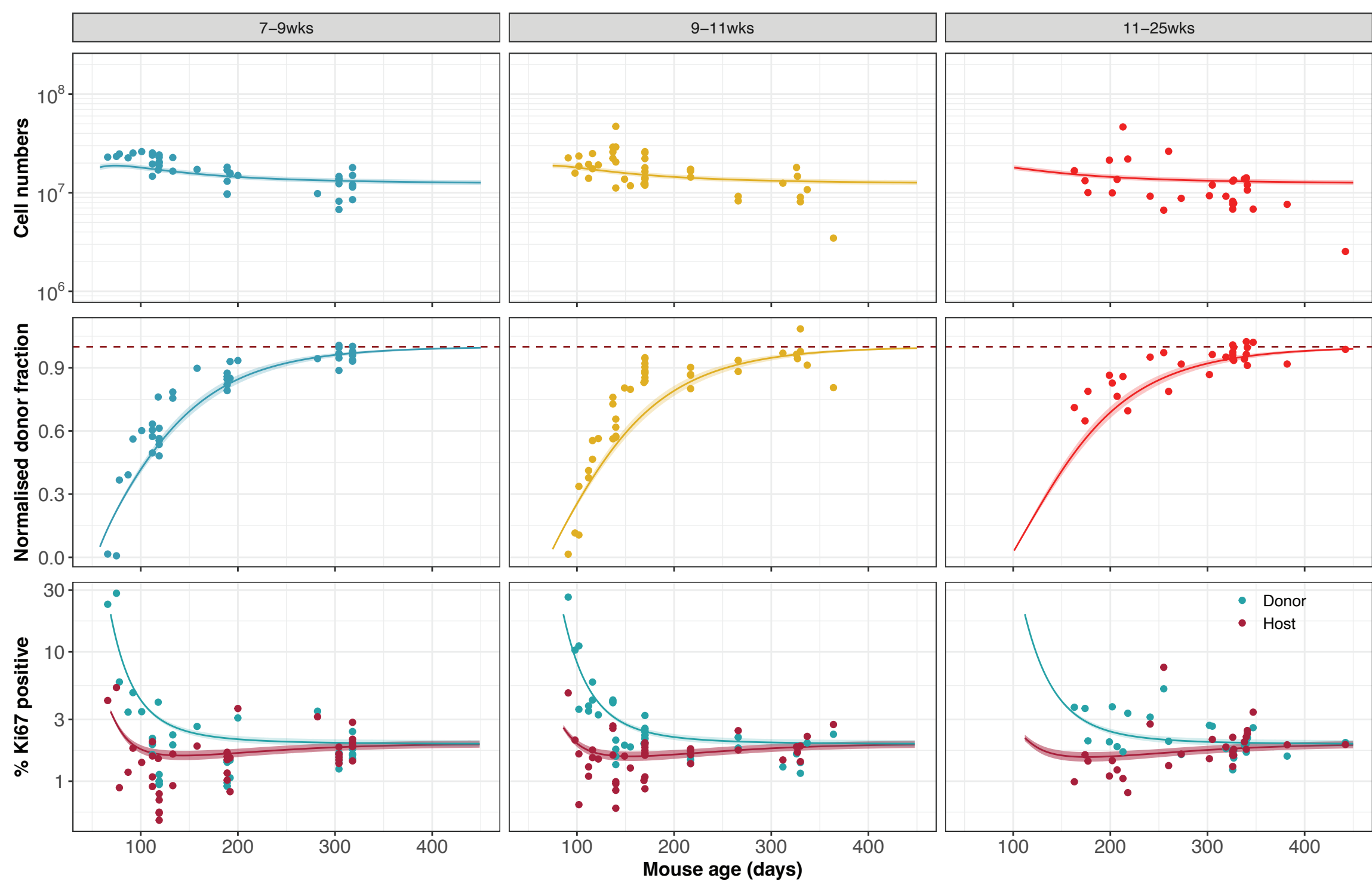
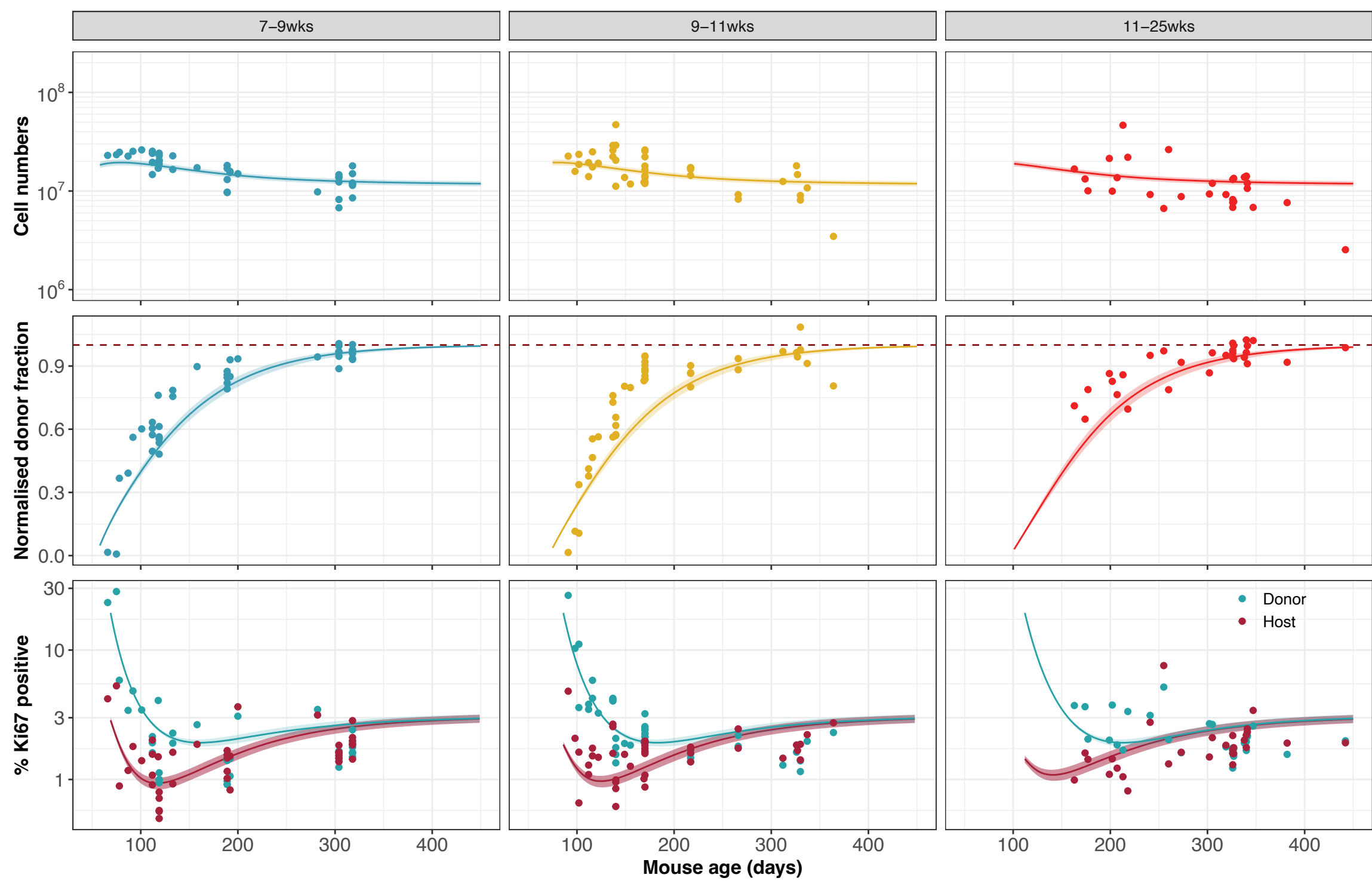


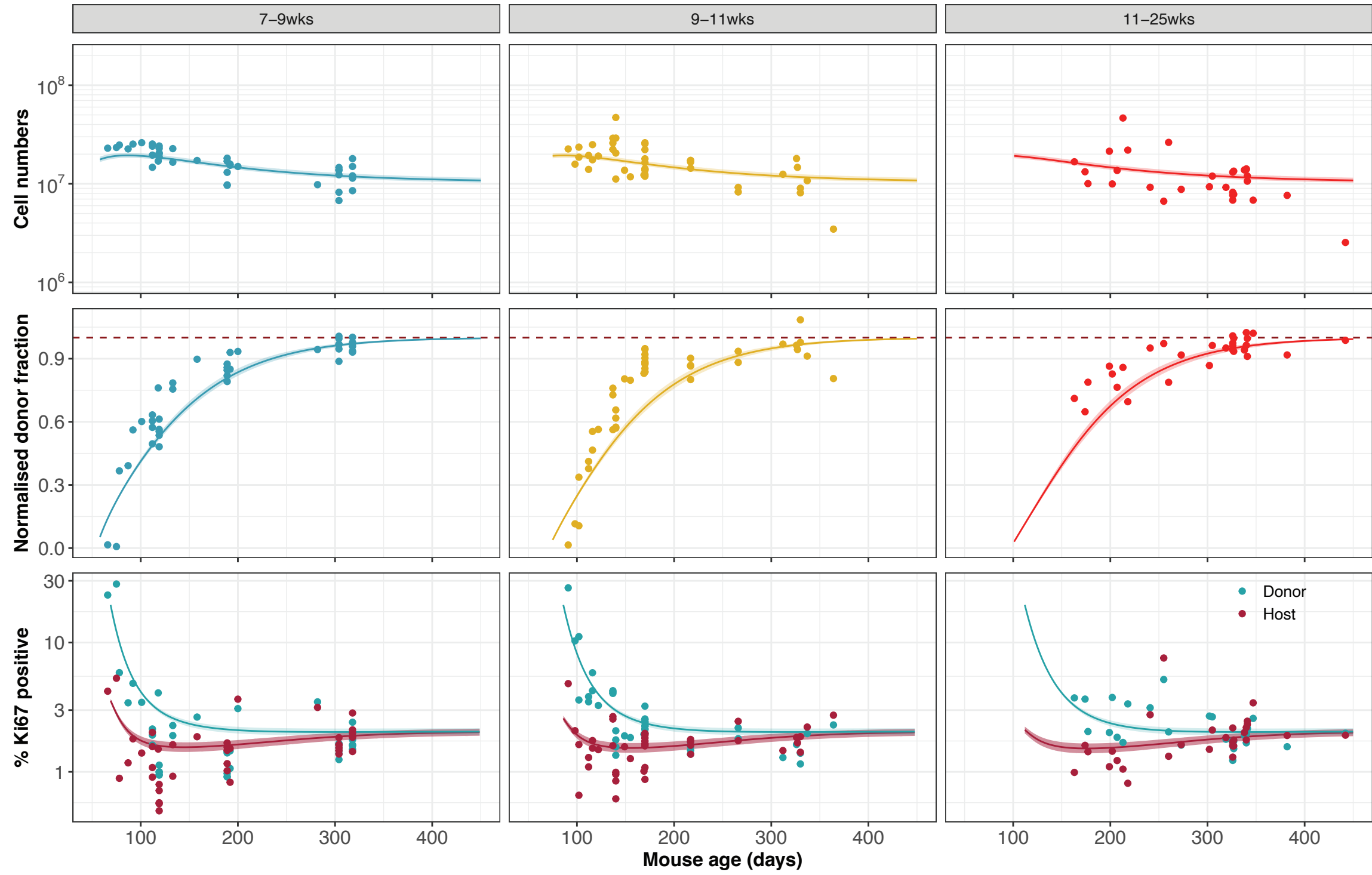
CD4 - Density dependent loss



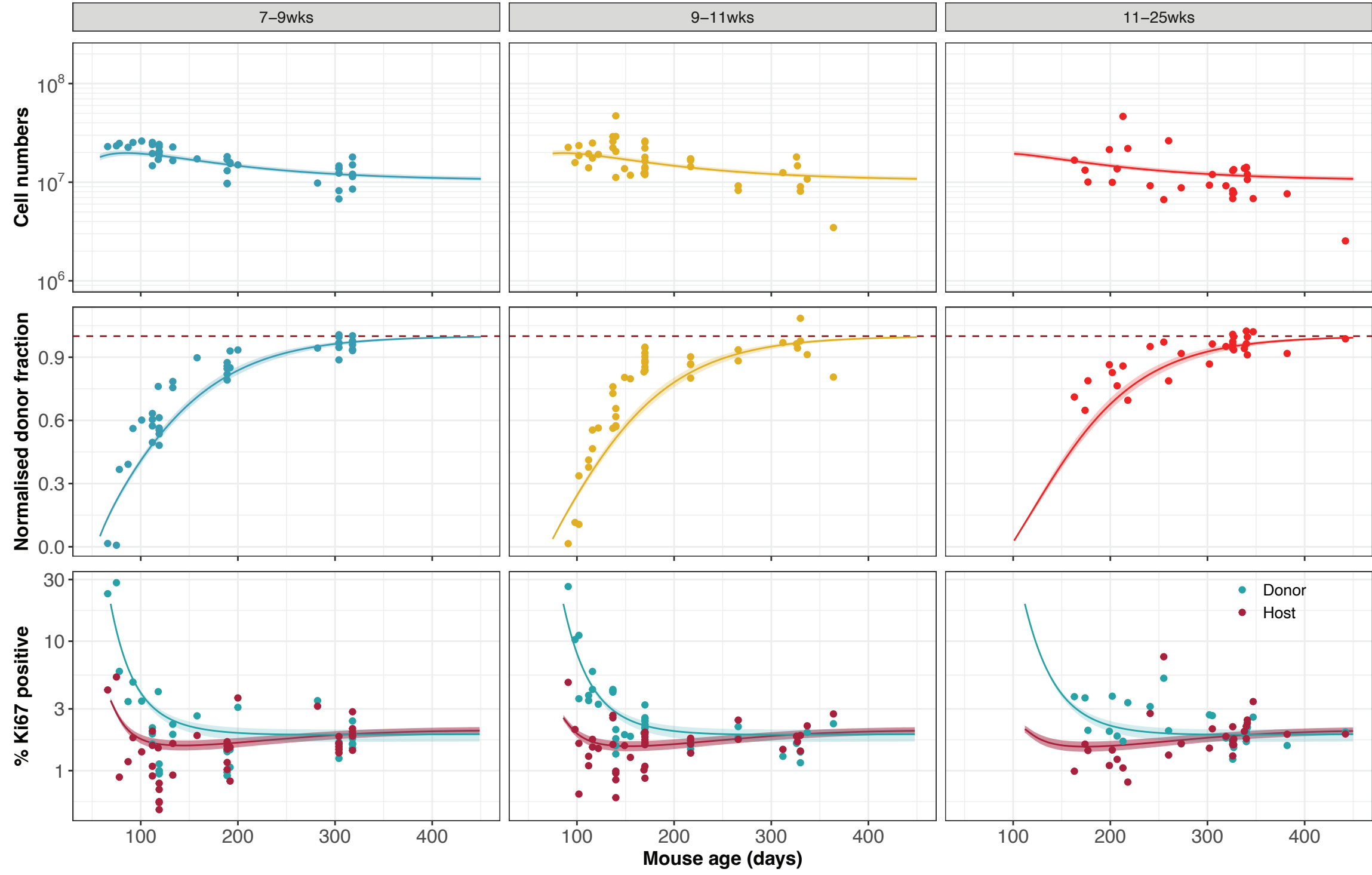
CD4 - Density-dependent division (LIP)



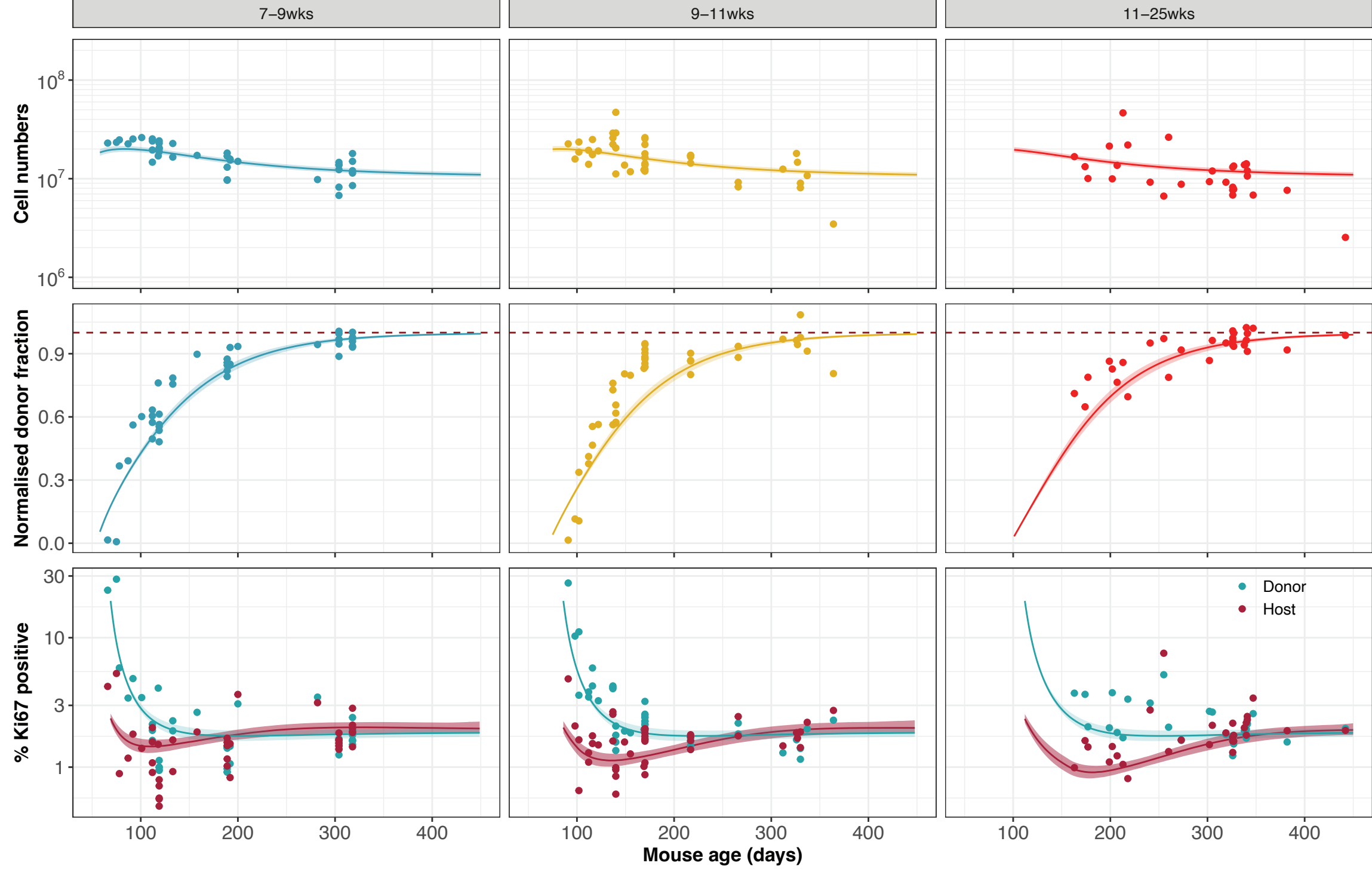
CD4 - Neutral model



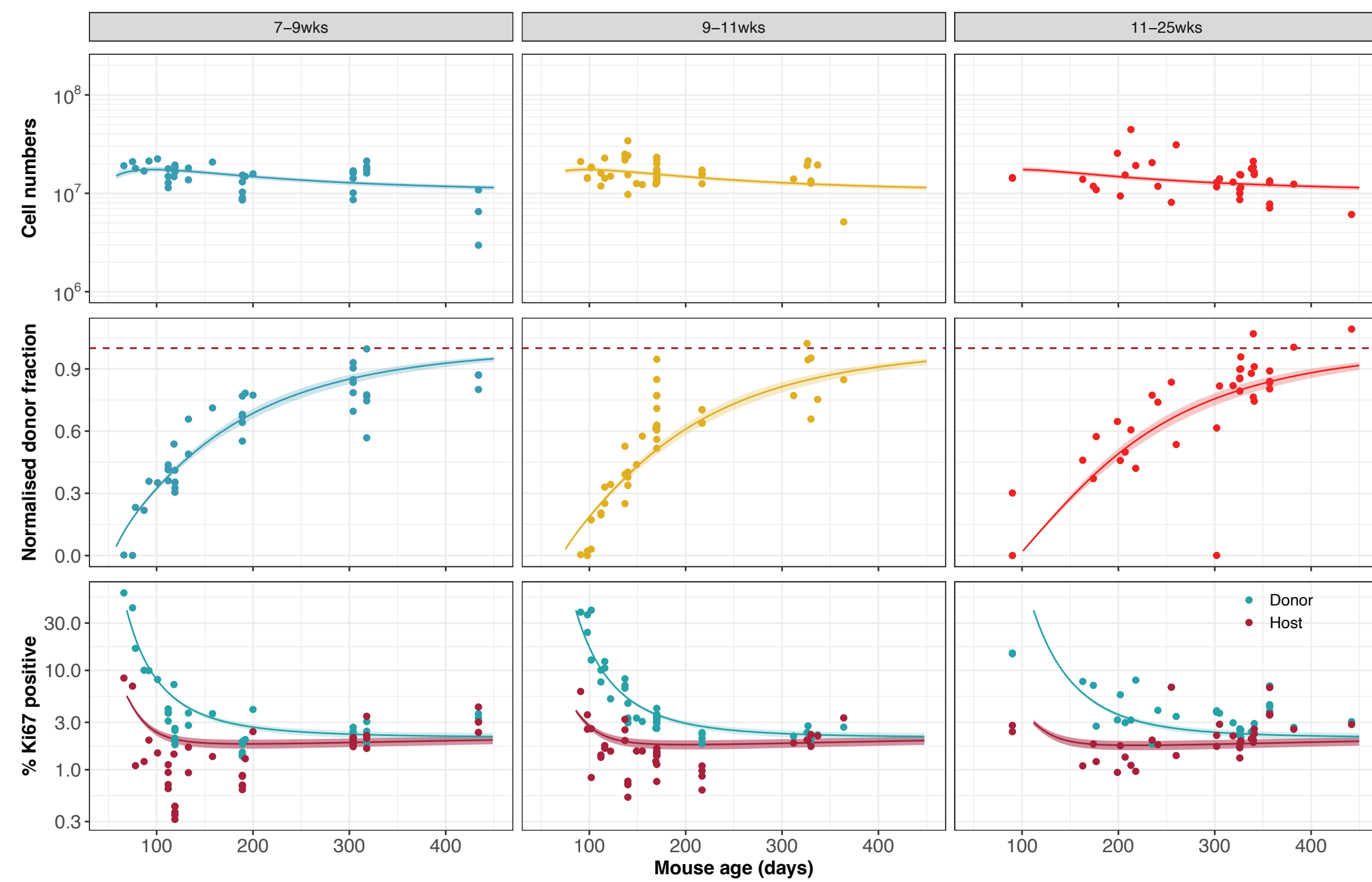
CD4 - RTE and mature naive model



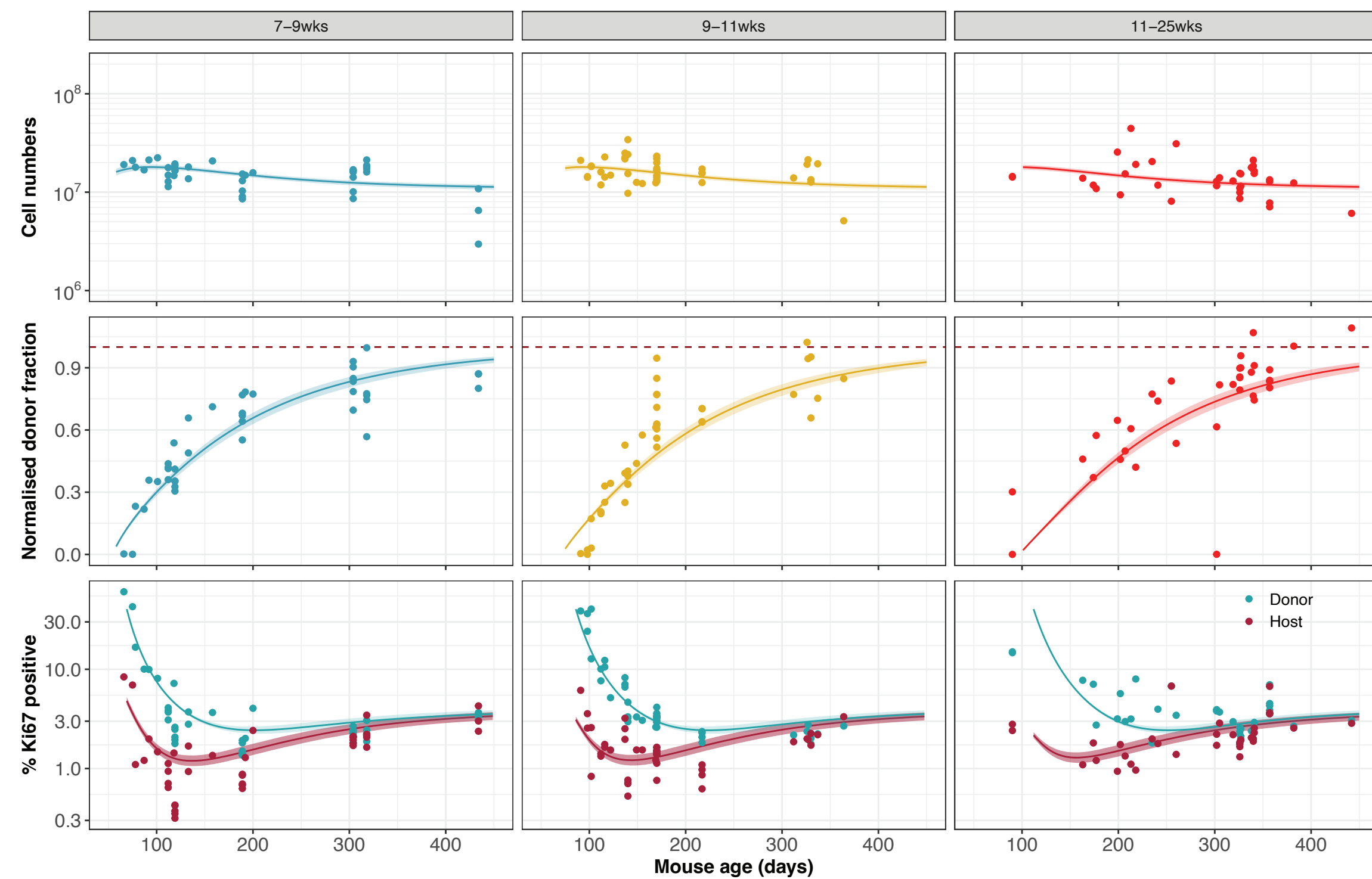
CD4 - Age-dependent division model



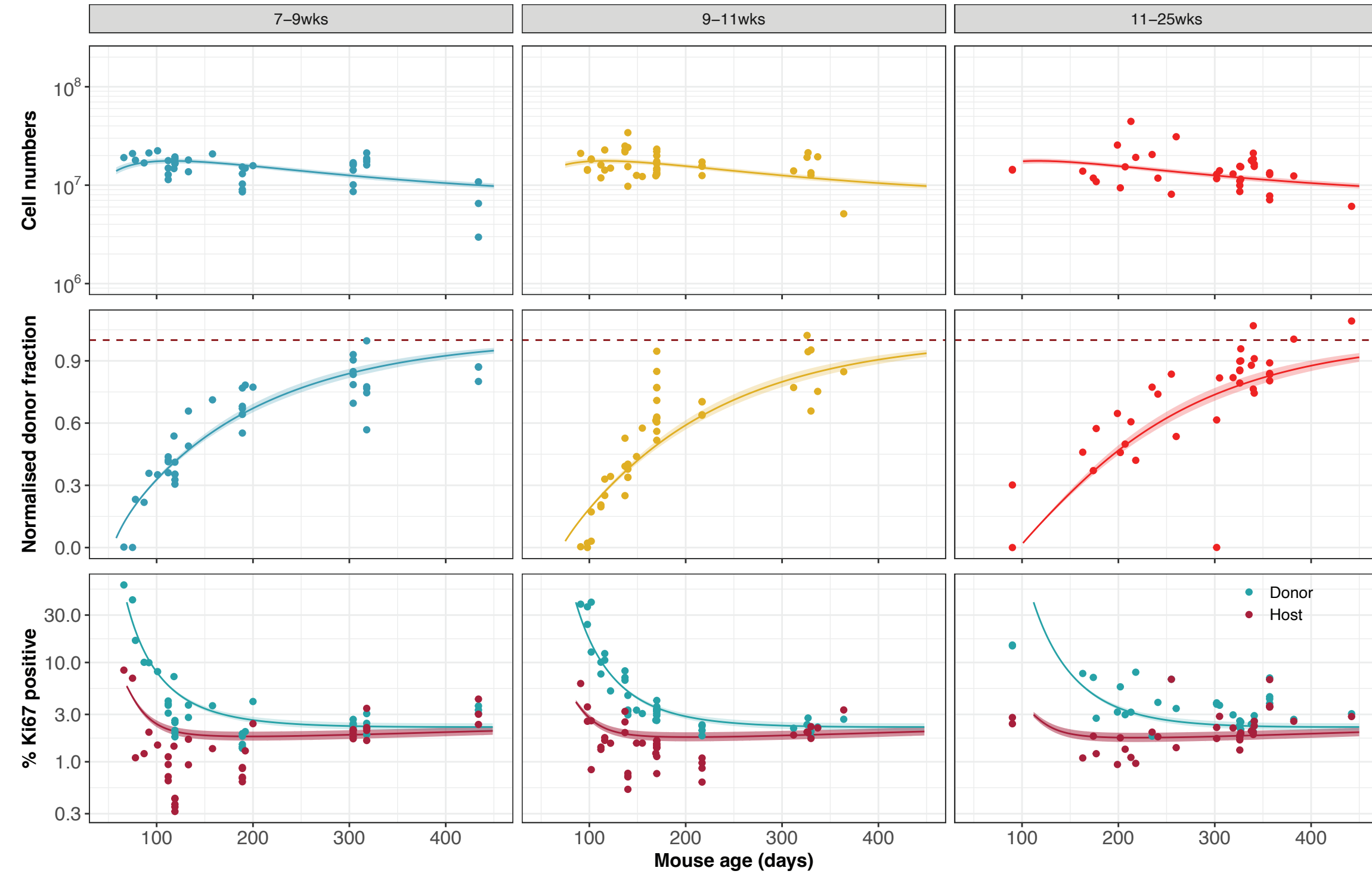
CD8 - Density dependent loss



CD8 - Density-dependent division (LIP)



CD8 - Neutral model



CD8 - RTE and mature naive model

