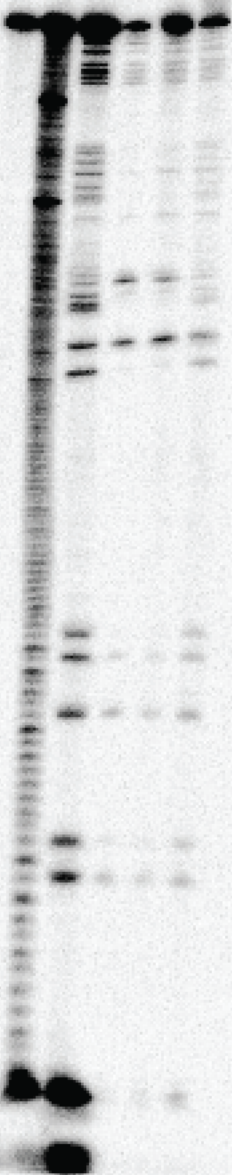


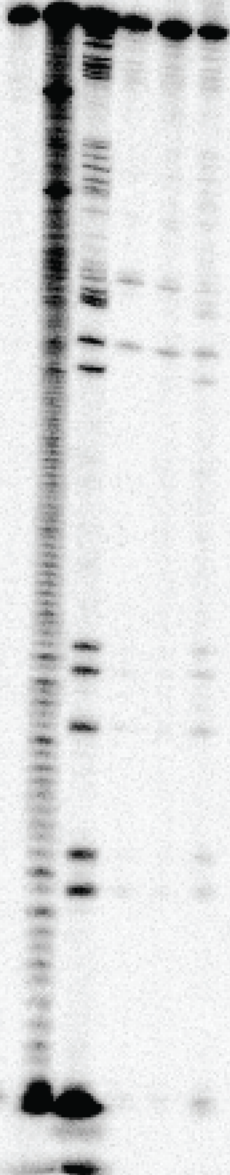
(i)

[Hdp1<sub>opt</sub>] (μM)  
NR OH T1 0 0.69 5.54



(ii)

[Hdp1<sub>opt</sub>] (μM)  
NR OH T1 0 0.69 5.54



(iii)

[Hdp1<sub>opt</sub>] (μM)  
NR OH T1 0 5.54

