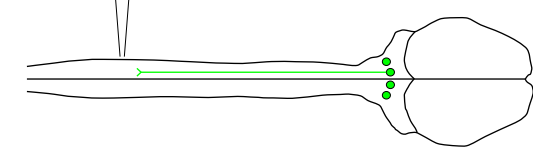


A

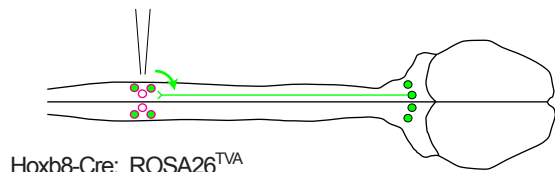
SAD.RabiesΔG.GFP (SAD-G)



● GFP-expressing neuron

D

Helper virus + SAD.RabiesΔG.GFP(EnvA) (2 weeks later)

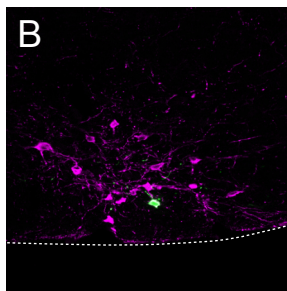
Hoxb8-Cre; ROSA26^{TVA}

○ starter cell

● rabies-infected starter cell

● monosynaptically traced cell

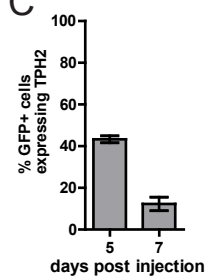
B



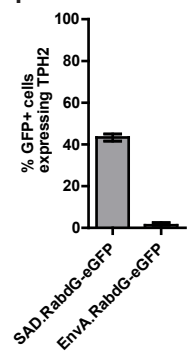
TPH2 GFP

LPGi

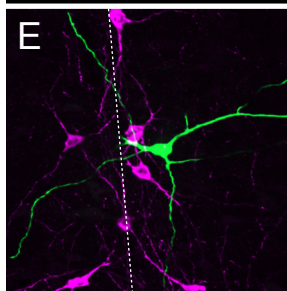
C



F



E



NRM