

The evolutions of a counter-defense mechanism in a virus constrains its host range

Srikant S, Guegler CK, Laub MT

Labelled source data

Figure 1E

source data file: Figure1_source-data1.tif

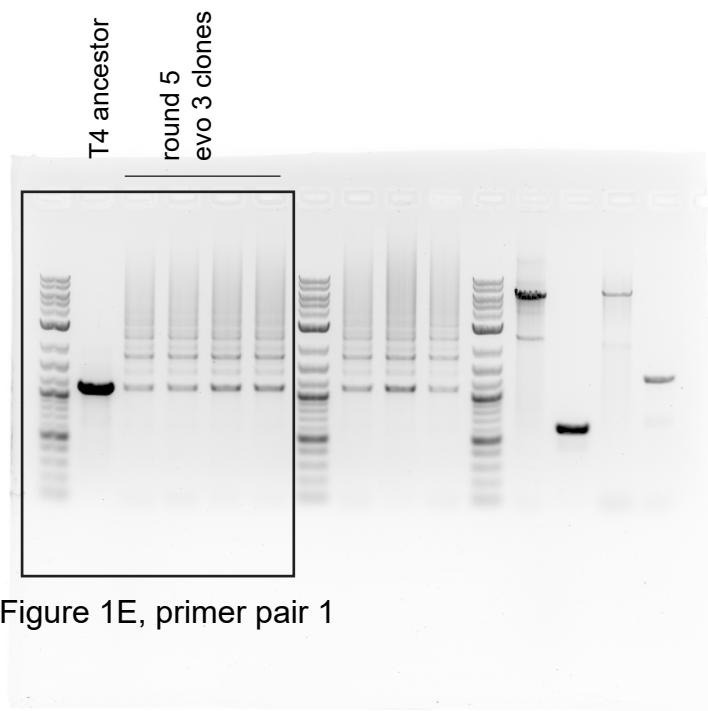


Figure 1E, primer pair 1

Figure 1E

source data file: Figure1_source-data2.tif

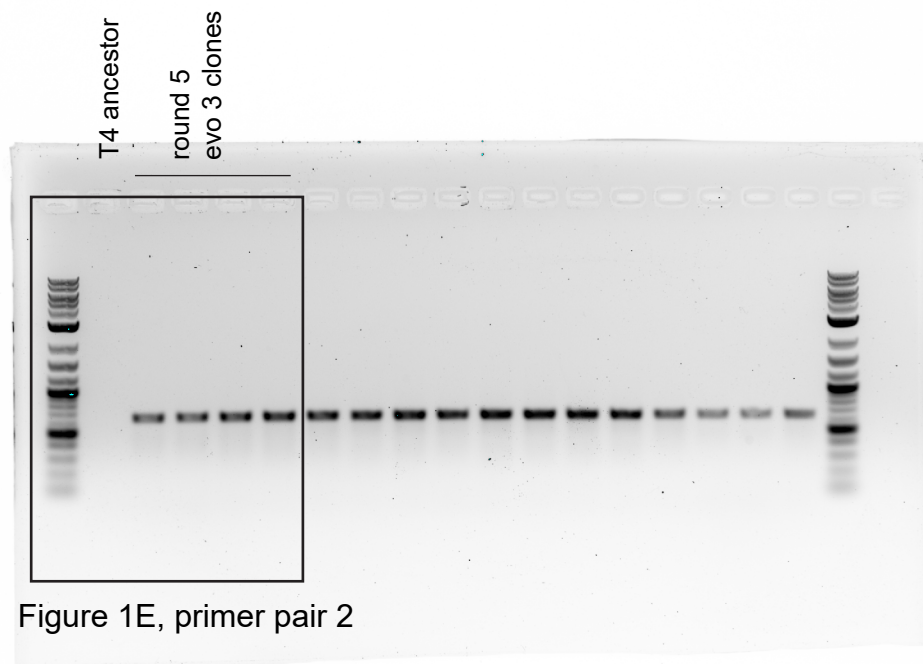


Figure 1E, primer pair 2

Figure 2E: anti-His₆ blot

Source data file: Figure2_source-data1-antiHis6blot_chemiluminescence.png

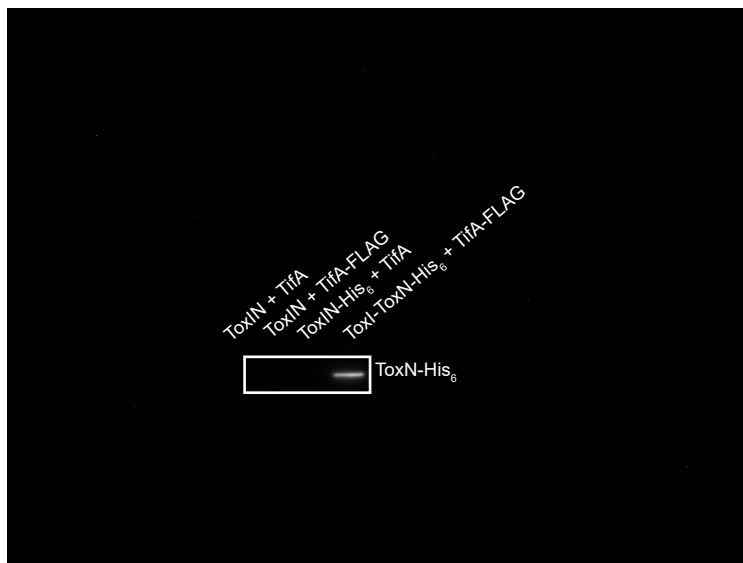


Figure 2E: anti-FLAG blot

Source data file: Figure2_source-data2-antiFLAGblot_chemiluminescence.png

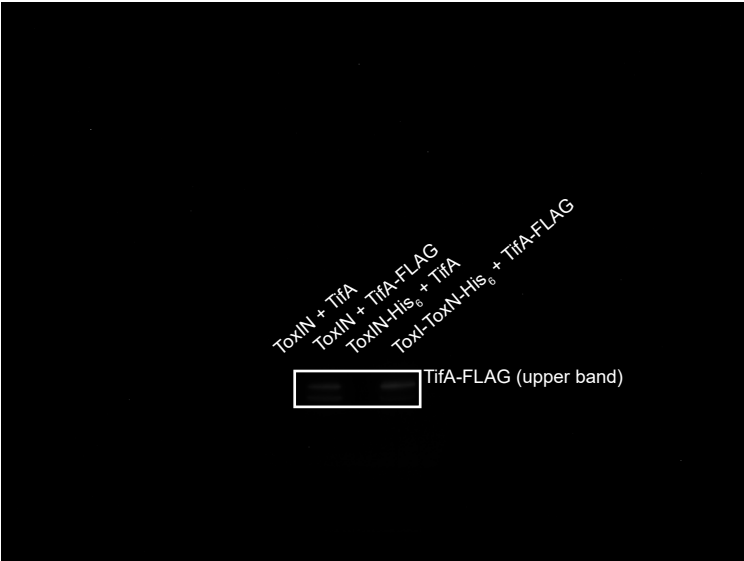


Image with contrast adjusted to better show bands:

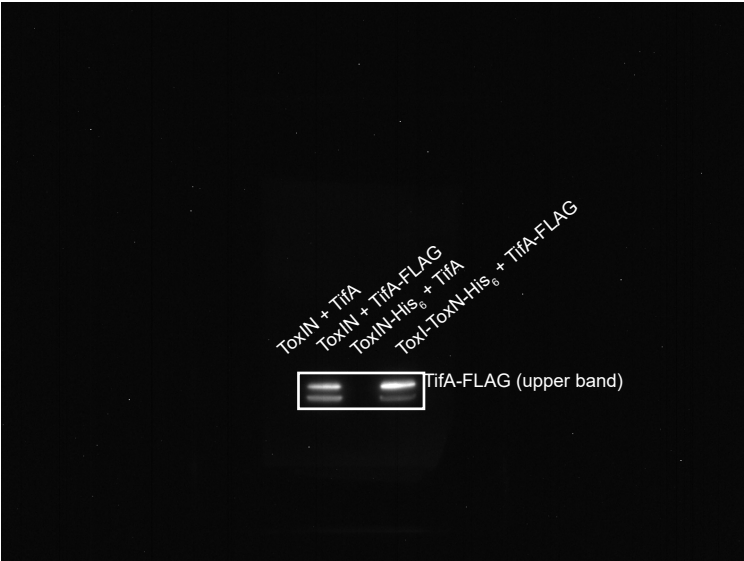


Figure 4E

source data file: Figure4_source-data1.png

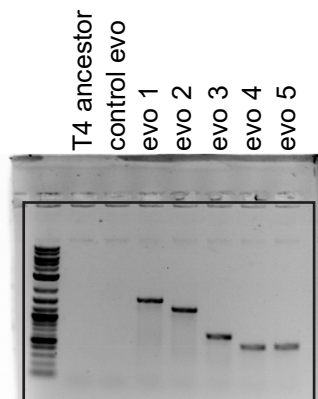


Figure 4E, primer pair 2

Figure 4 - figure supplement 2A
source data file: Figure4_figure-supplement2A_source-data1.tif

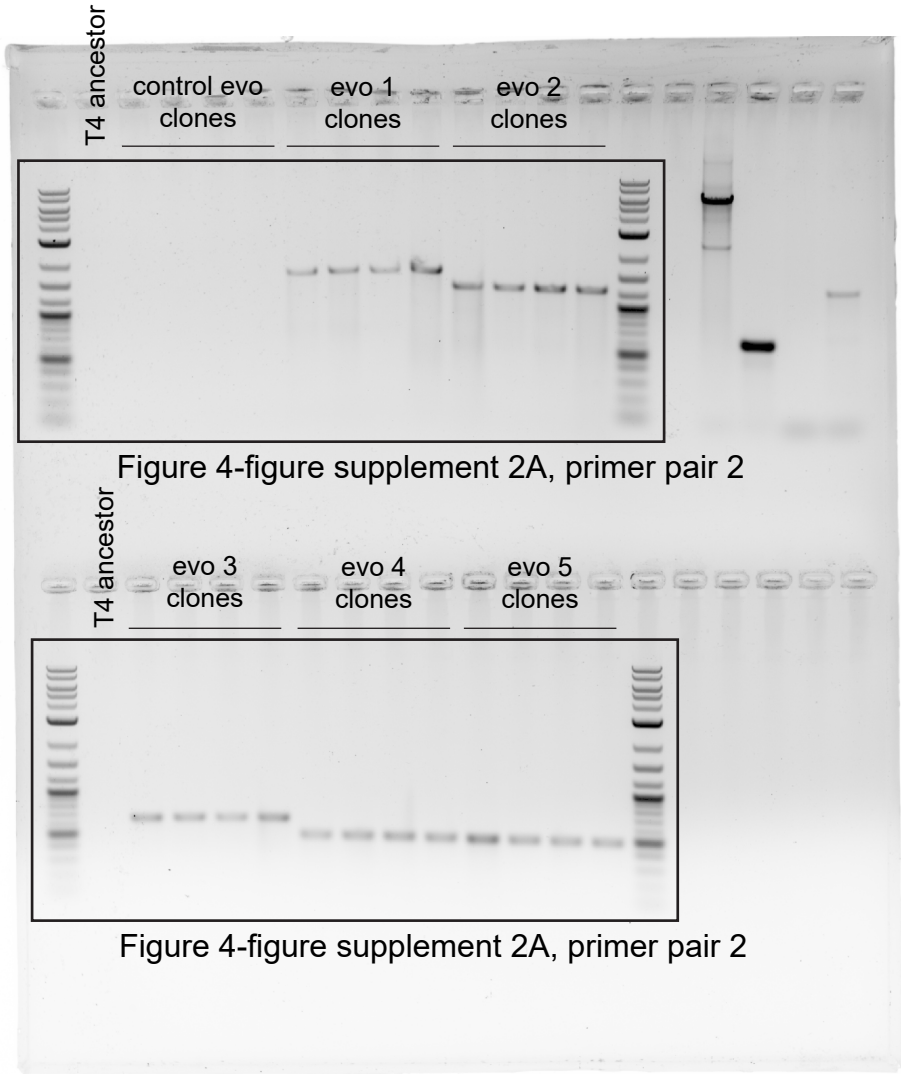


Figure 5 - figure supplement 1A
source data file: Figure5_figure-supplement1A_source-data1.tif

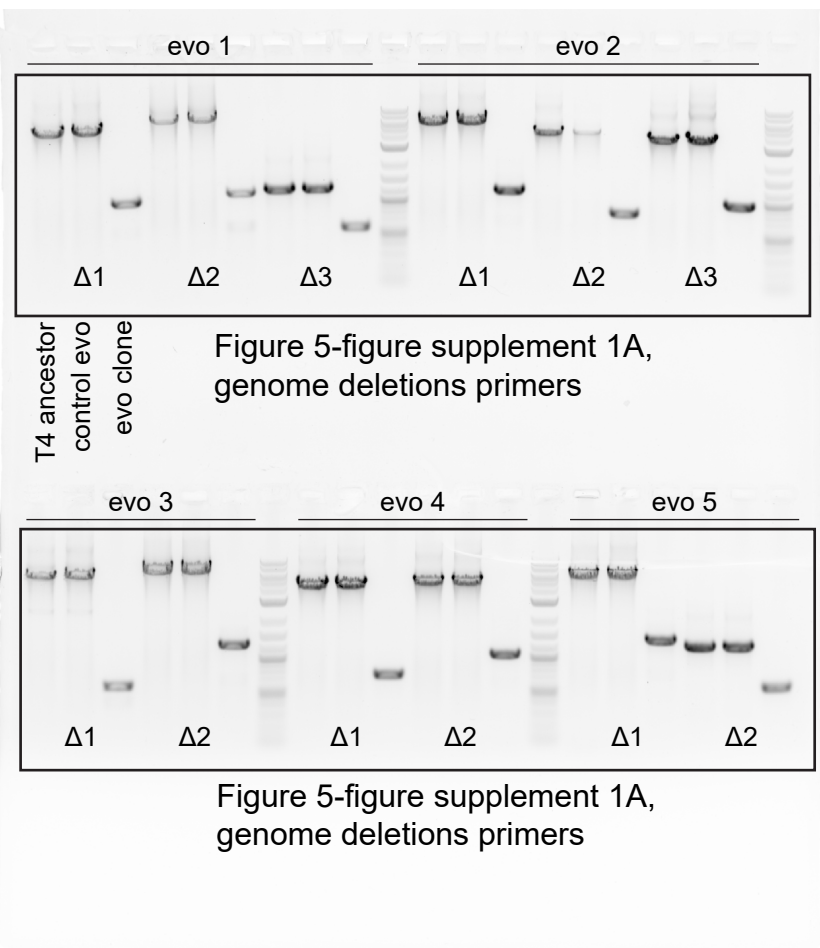


Figure 5 - figure supplement 1C

source data file: Figure5_figure-supplement1C_source-data1.tif

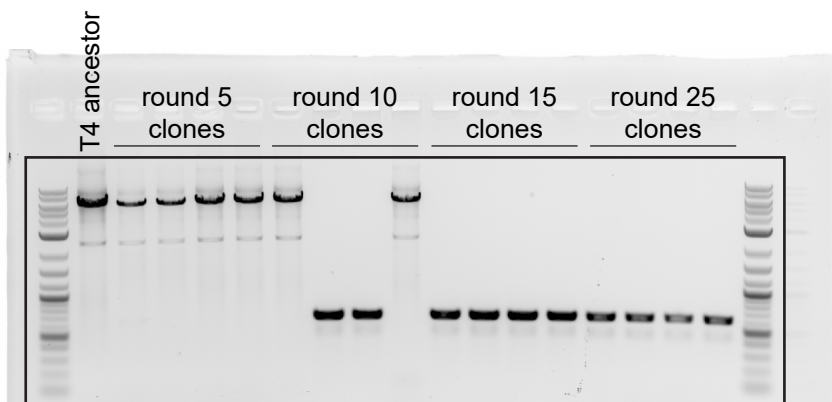


Figure 5-figure supplement 1C,
evo 3 genome deletion $\Delta 1$

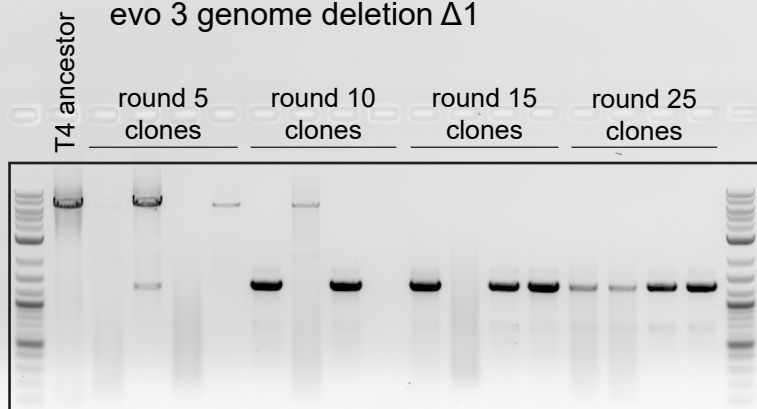


Figure 5-figure supplement 1C,
evo 3 genome deletion $\Delta 2$

Figure 5 - figure supplement 1C

source data file: Figure5_figure-supplement1C_source-data2.tif

