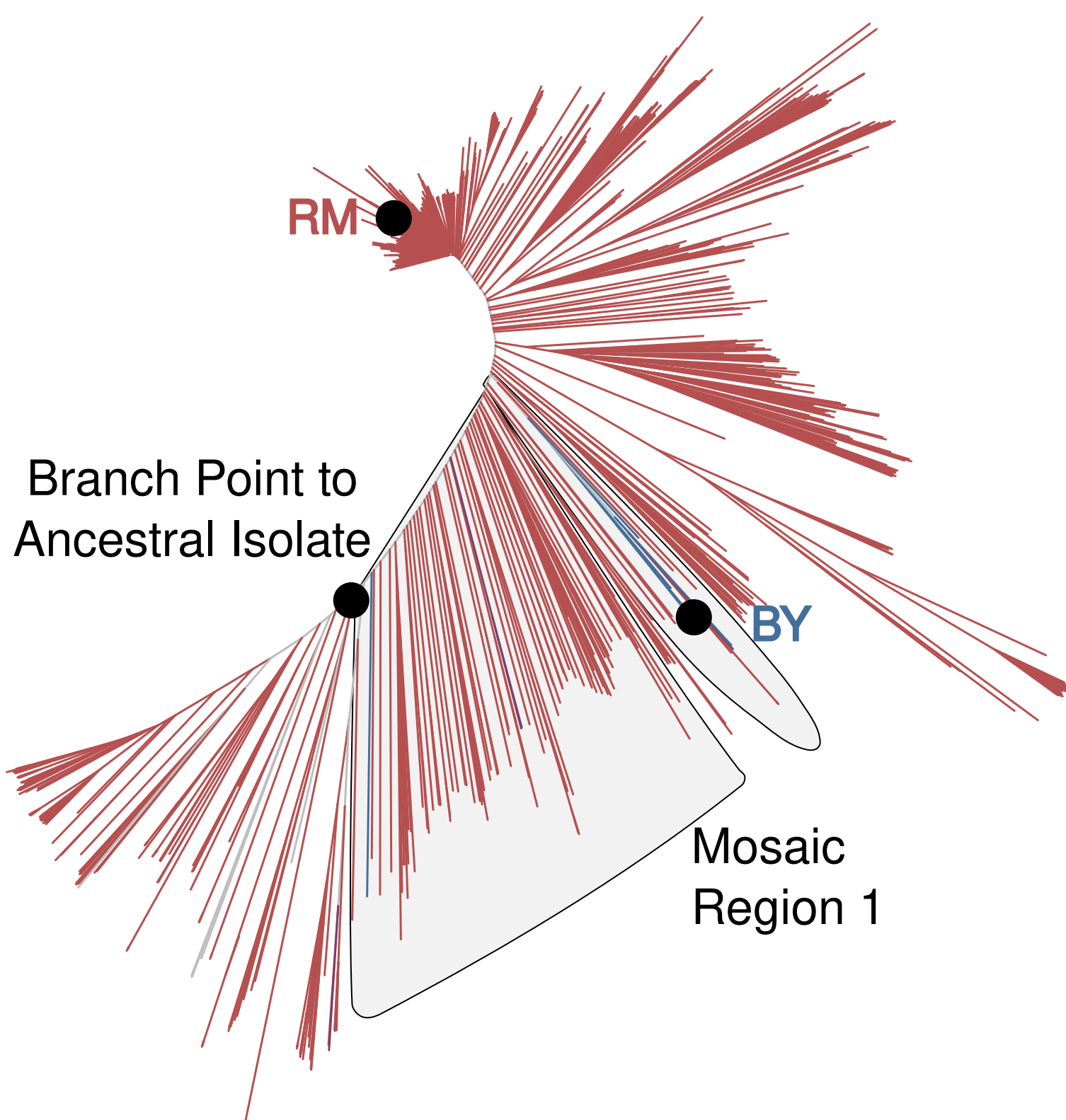
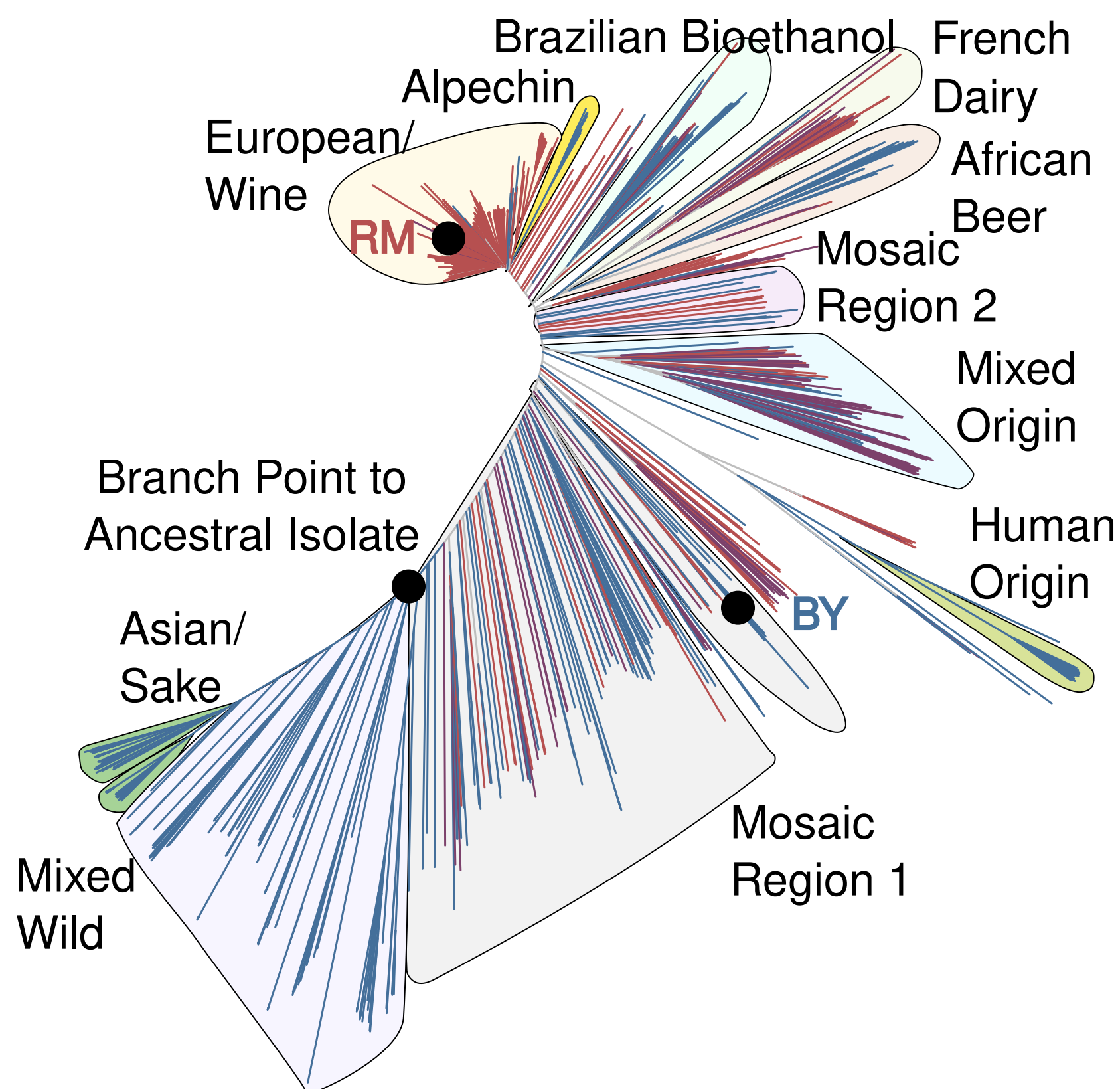


- Homozygous RM Allele
- Homozygous BY Allele
- Heterozygous RM / BY Allele

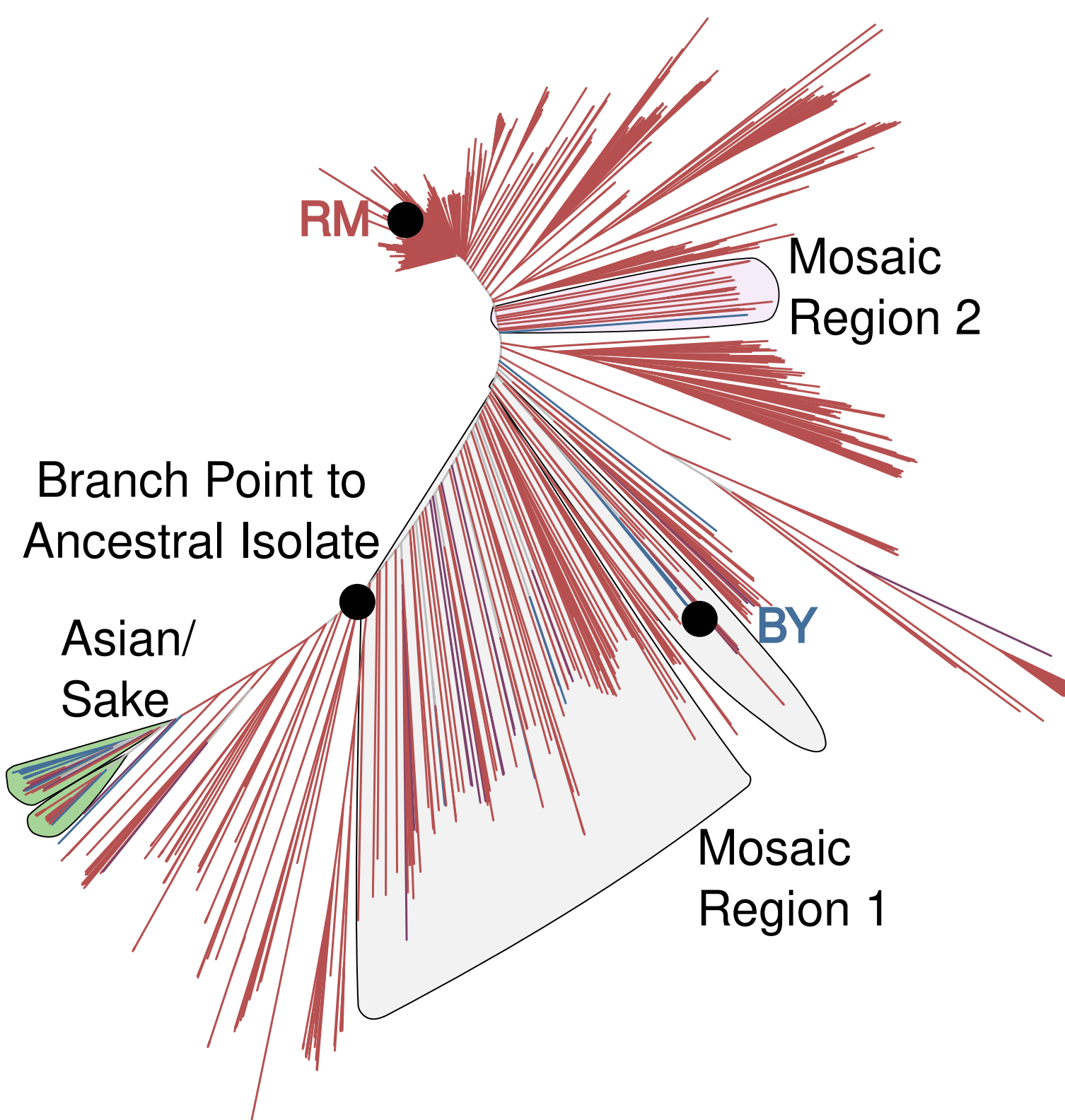
***UBR1* -469A>T**
RM allele frequency = 99.0%



***NTA1* E129G**
RM allele frequency = 51.5%



***DOA10* Y1186F**
RM allele frequency = 94.9%



***UBC6* D229G**
RM allele frequency = 97.8%

